

CWL installs new exec

The C.W.L. of Penetanguishene held an impressive ceremony during last Sunday's Mass at St. Ann's Church.

Father R. Andrews installed the new 1985-86 executive. Past president Rita Larmand was asked to light a small candle from the large Easter candle and hand it over to the new president, Annette Ouellette.

As Father Andrews read a prayer for each of the different executive positions, a candle was lit. Rita handed the gavel to the new president.

The new executive is: President-Annette Ouellette, Past President-Rita Larmand, 1st Vice-Jean Brunelle, 2nd Vice-Margaret Dupuis, 3rd Vice-Joanne Mailloux, Recording Secretary-Audrey Easton, Corresponding Secretary-Rita Larmand and Treasurer Cecile Lethbridge.

A Communion Breakfast was held at the Olympia Restaurant for approximately 50 women following the Mass. The C.W.L. has had a very busy year and the 1984-85 year will officially end with a Pot Luck supper in May.

May 1

Regular monthly meeting of the Midland Commodore Users Group at 7:30 p.m., in Midland Centennial Arena board room. For more information telephone 526-5059 or 534-3378.

Open house during month of May of Midland Nursery School, located in St. Paul's United Church, King Street, Midland, Mondays, Tuesdays or Wednesdays, 9:30 a.m. to 11:30 a.m. or 1:15 p.m. to 3:15 p.m. A co-operative or non-co-operative nursery school, registrations accepted for September.

May 4

Third annual pony sale of registered and grade ponies, sponsored by Coldwater Pony Club, Coldwater Fairgrounds. Child pony show and pony pull. For information telephone Milton Budd (538-2036).

May 6

Margaret Rebekeh Lodge euchre at 7:30 p.m. in Rebekeh Hall, Hazel Street, Waubaushene. Lunch and prizes.

May 12

Treat Mom to a pancake breakfast on Mother's Day, in St. Margaret's Church, Midland, basement, after 9 a.m. and 11 a.m. masses.

Re-elect

Allan McLean
Simcoe East



MHC patients form substantial voting bloc

by PETER SPOHN

Judging by the turnout for the four Simcoe Centre candidates who toured the Oak Ridge division of the Mental Health Centre on separate campaign tours of the Penetanguishene hospital in recent days, interest in tomorrow's election is running high among the patients.

This is the first election in which Oak Ridge patients have voted in a general election. In past general elections, a few voluntary patients in the Regional division have voted.

Liberal candidate Ross Whiteside was the first of the campaigners to tour Oak Ridge and the Regional division in search of votes. He campaigned last Thursday. MHC public information officer Jim Park said Monday Whiteside, as the first candidate on tour, probably attracted the most interest among patients. Park said about 75 turned out for the candidate when he addressed patients

gathered in a cafeteria.

The turnout was down to about 45, Park estimated, when Independent Green candidate Steven Kaasgaard visited the following day.

Conservative Earl Rowe and New Democrat Paul Wessinger campaigned Monday.

Park, who accompanied the campaigners, said questions from the Oak Ridge patients ran the gamut of issues. Candidates were pressed for their views on environmental and economy issues, as well as questions related to the provision of mental health and capital punishment. Each candidate spent about an hour at Oak Ridge. They made brief addresses and then opened the floor to questions. Park noted that the candidates were at the hospital to seek support from the patients, and not from hospital staff.

Park noted that all of the Oak Ridge

wards have a television set in a common room and that, depending on the ward and functional levels of the patients in the wards, the patients keep abreast of the news through different newspapers. Most of the questions reflected a clear grasp of election issues, Park noted. Some of the patients pressed the candidates on how they would improve job and skills

training for psychiatric patients, he said.

Patients in both divisions form a potential bloc of 233 voters. At Oak Ridge, 156 are registered to vote. Seventy-seven are registered in the Regional division. Unregistered patients can be vouched for at the polling places set up in the divisions.

Election '85

Ontario

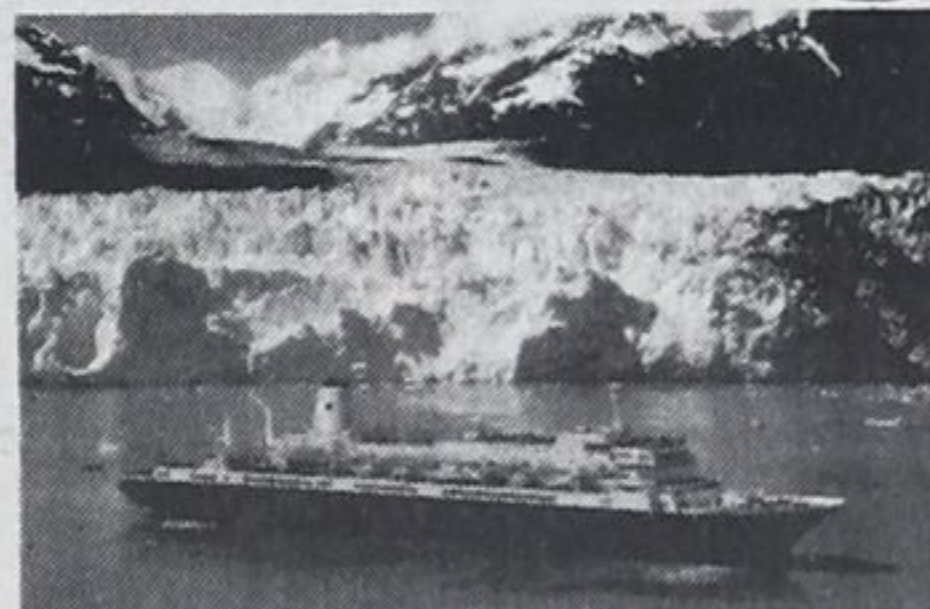
The Municipal Sweepstakes into Savings

- ### Here's All You Do To Enter
- Visit our Branch between April 22 and June 8
 - Customers and non-customers will receive one complimentary entry
 - Additional entries available by opening or adding to an existing savings or chequing account with each \$200 net deposit. Maximum 200 entries per person.
 - Complete contest details available at participating Branches.

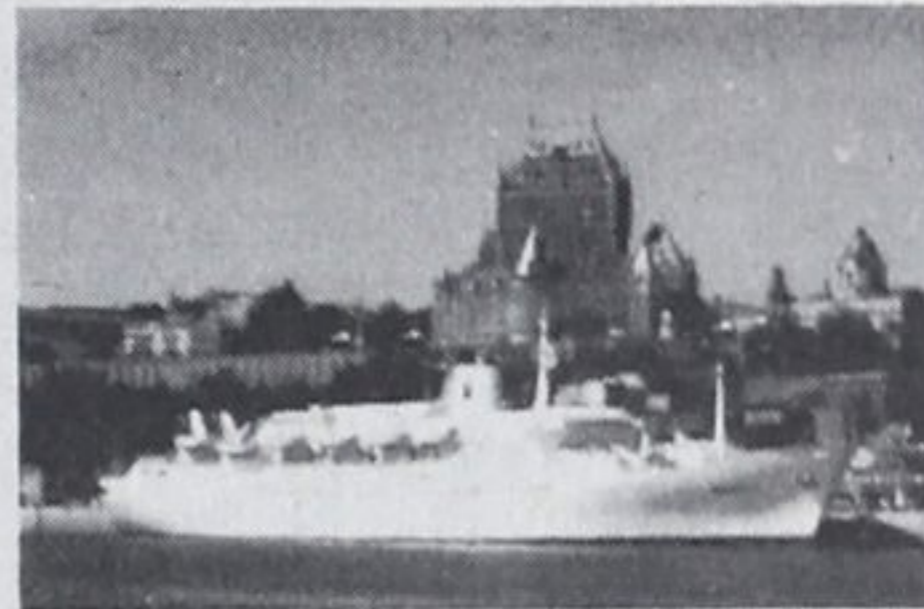
YOU COULD WIN

3 Super Grand Prizes!

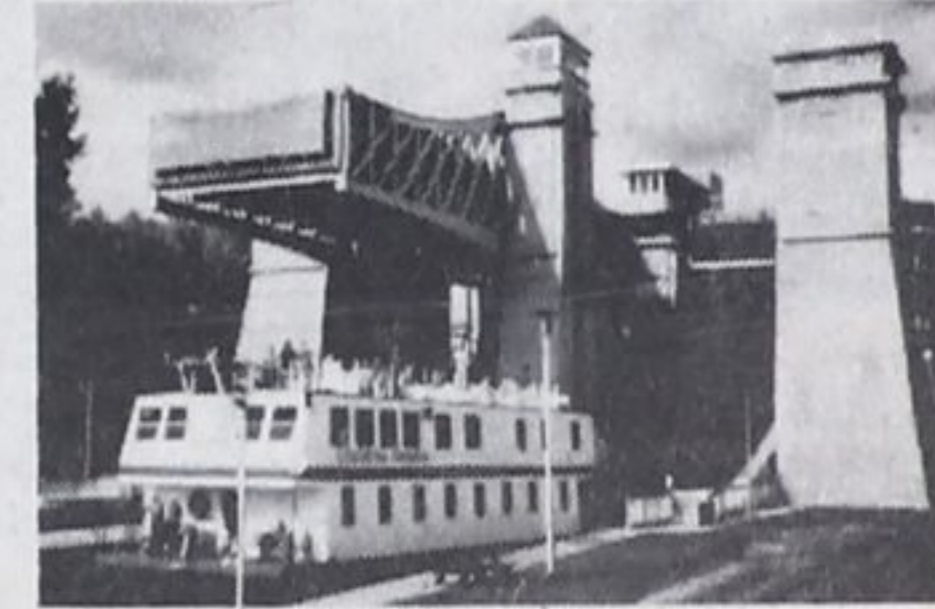
100 Random Draws From 15 Branches



1st Prize
9 Day Yukon/Alaska Tour for 2
Combination Air, Motorcoach and Ship cruise. Approx. Value \$6,500. Arranged by Municipal Travel, C.P. Air and Holland America Westours. Tour departs September 6, 1985.



2nd Prize
7 Days Aboard SS Veracruz for 2
Cruise the St. Lawrence on route to New York. Approx. Value \$3,500. Arranged by Municipal Travel, C.P. Air and Treasure Tours. Tour departs September 7, 1985.



3rd Prize
6 Day Trent System Cruise for 2
From Peterborough to the Bay of Quinte. Approx. value \$1,700. Arranged by Municipal Travel and Ontario Waterway Cruises Inc. Tour departs September 8, 1985.

3 Branch Grand Prizes!

All entries throughout contest period will be eligible.



Norco Compact Folding Adult 3 Speed Bicycle. Approx. Value \$220.



Minolta Talking 35 mm Automatic Camera. Approx. Value \$220.



Panasonic Ultra Compact 1 1/2" T.V. with stereo radio. Approx. Value \$290.

7 Weekly Branch Draws!

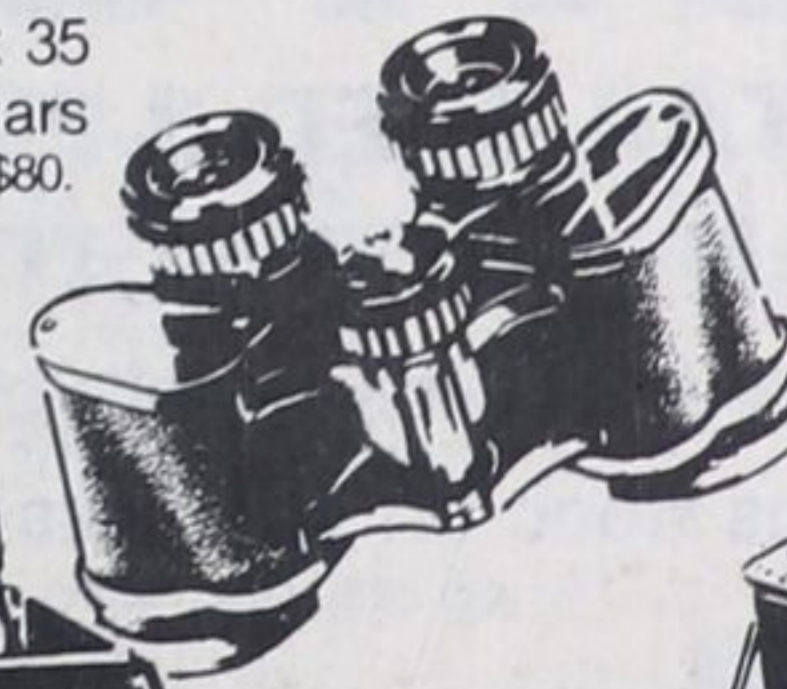
4 winners each week, each week a new contest.

See all the Prizes on Display!

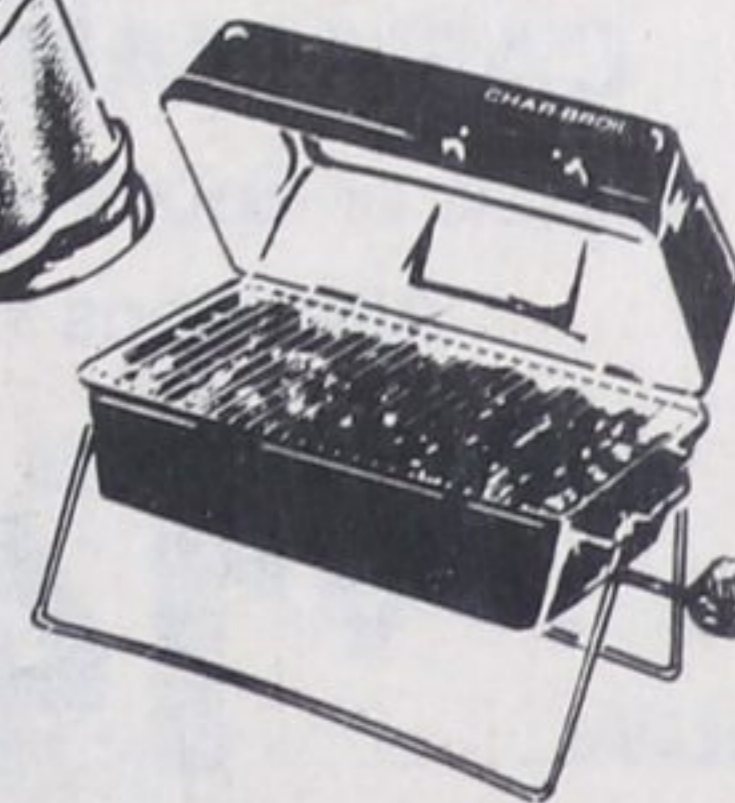


Sevylor 3 Person Inflatable Boat. Approx. Value \$80.

Taylor 7 x 35 Wide Angle Binoculars. Approx. Value \$80.



Charbroil Portable Gas Grill. Approx. Value \$60.



Gott Family 50 Quart Cooler. Approx. Value \$75.

1st Rate Daily Interest

On All Your Money!

Good Rate - on all your money up to \$5,000 Daily Balance
Better Rate - on all your money from \$5,000 to \$15,000 Daily Balance
Best Rate - on all your money \$15,000 and over Daily Balance



the municipal savings & loan corporation

Member Canada Deposit Insurance Corporation
248 King St., (Just S. of Dominion) 526-4296
Mountainview Mall 526-2273

Convenient hours Monday through Saturday

Take a minute to call your nearest branch. We're sure you'll be impressed with how much interest you could be earning.

There's more than top interest behind The Municipal's 1st Rate Daily Interest account. The fact is, 1st Rate is a complete money management system that combines all the best features of other accounts into one neat economical package.

Our staff would be pleased to explain the many features of our 1st Rate Daily Interest Account and while you're there you can look over all the exciting prizes.