

Outdoors

by Bryan Berriault

If fishing rods are looking for smallmouth bass it hasn't been a good year so far!

So far, it's been a hit and miss situation! The shoals in Georgian Bay have produced one a day, but upon a return trip, have come up empty.

Those who've found an area producing steadily, are not about to give away trade secrets!

With water temperatures warming up smallmouth bass will start moving to some of the outer shoals.

For those who run graphs or flasher units it's time for them to start paying off.

Look for shoals in the middle of nowhere with a water depth of three to five metres (10-15 feet) water temperatures should be just about right to hold smallmouth at this depth.

Run a few minnows or worms over the shoal.

I'm not about to guarantee fish, but the chances are good.

The trusty Sitex 256 graph recorder put a shoal at 12 feet and within twenty minutes a couple of us had limited out.

We returned most of the fish but upon a return trip to get in on some bronzeback action again, we couldn't find the shoal.

If the fishings good get some good land marks for returning trips.

There may still be a few fish wandering close to shorelines with rocky or sandy bottoms and a few weedbeds.

Largemouth have been hitting well.

Shoreline temperatures have been to their liking, along with frogs, spinner baits and buzzers worked right in their cover.

Some hefty three to five pounders have been taken in such areas as Penetanguishene Bay, Hogg Bay and Sturgeon Bay.

So far, from all reports, largemouth are hitting better than smallmouth bass.

But don't give up, smallmouth will have their turn.

If looking for largemouth, hit shorelines as close as possible.

Old bucketmouth is not against sitting in a few inches of water, while waiting for a free meal to pass his way.

Early morning or late evening is usually prime time unless cover is thick enough to offer shade and protection from the noon day sun.

If this is the case hang in there, sooner or later you'll make it an offer it can't refuse!

NOT TOO EARLY TO BE

THINKING DEER

For those applying for an antlerless permit to hunt whitetails this fall, there is only a few days left.

Applications must be received by the Ministry of Natural Resources in Toronto or the nearest Ministry Office by 5 p.m. Tuesday, July 31.

Application forms are attached to 84 deer licences which have to be purchased first.

Draw will be held in mid-August!

Good luck fishing and in the draw!



Mighty T-Baller!

Kristy Rowland, of Bourgeois Motors, takes a big swing at the ball in a T-Ball game played, Monday evening at Parkview School. Bourgeois took an early lead in their game, however, Realty World defeated them 24-20.

Sturgeon Bay rebound to take Coldwater

In their final regular season Georgian Bay Women's Softball League game, Sturgeon Bay unleashed their offense, as they collared Coldwater 16-9, last Thursday in Sturgeon Bay.

Coldwater led 5-0 after two innings of play, however, Sturgeon fought back with seven runs in the third.

They added two more in the fourth, four in the fifth and three in the sixth.

Coldwater scored four times in the top half of the sixth.

Cindy Marshal was

the winning pitcher, while Carol Barr took the loss for Coldwater.

Marshal helped her own cause with four singles.

Cheryl Duffy and Patti Vassair led in the RBI column, with three each.

Duffy had two triples

and a single, while Vassair had a three run triple in the contest.

Meredith Orr led the way for Coldwater, with two doubles and she drove in three RBI's in the game.

Sturgeon Bay out-hit Coldwater 16-8 in the game.

Errors prove costly for Perkinsfield squad

by RANDY BUTINEAU
Phelpston Phillies played one of their strongest games of the season, last Thursday evening, in their Simcoe Rural Fastball League game against Perkinsfield Commodore Hotel Bantus, in Perkinsfield.

Frank Minnings pitched a four hitter, as they shutout Perkinsfield 4-0.

Bantus committed five costly errors, which accounted for two of the Phelpston runs.

Minnings struck out seven Bantus swatters,

while Perkinsfield hurler, Andre Quesnelle did equally well on the mound, striking out five.

Perkinsfield failed to score in the second inning, when Quesnelle led off with a triple.

Ben Pauze bunted and was thrown out and the next two Perkinsfield batters struck out.

Phelpston scored twice in the top half of the fifth inning.

John Minnings led off with a single and Pete Newman walked.

Terry Brown sacrificed the runners to second and third.

Gerry Minnings hit to the short stop, who threw home to get John Minnings.

Gerry Craddock singled home the two base runners.

Perkinsfield threatened in the bottom half of the fifth inning.

Ben Pauze doubled

and reached third on a passed ball.

Gary Watson hit a sacrifice fly to centre field and Pauze was thrown out at home plate.

Phelpston added two more runs in the sixth, thanks to a couple of Bantus errors.



'Marc' says isn't it time you considered a Trade!



1981 CAMARO Maroon, 305 V8, auto., ps., pb., T-Roof, radio, white lettered tires, fully reconditioned, low mileage, **\$8,500.**

'The BIGGEST Chev-Olds Dealer in Victoria Harbour'

CHEVROLET LOCKHART MOTORS

Chevrolet-Oldsmobile Dealer
Park St. Victoria Harbour

534-3161

534-7251

835-3813

Investment Certificates

11%

30-59 days \$5,000 min.

12 1/8%

180 to 300 days
\$5,000 min.



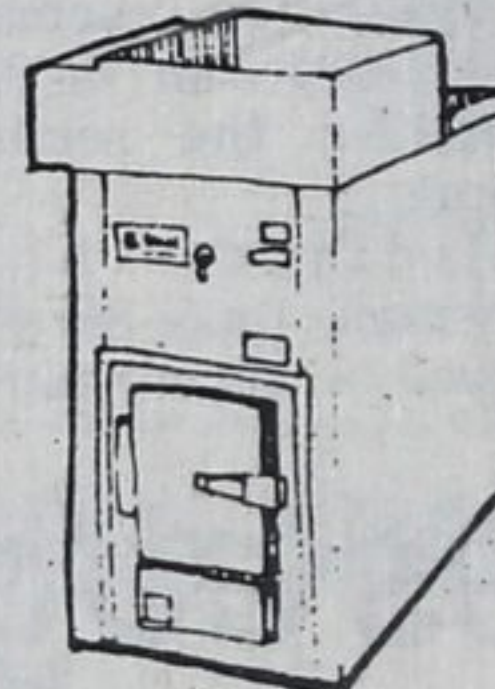
Rate subject to change

the municipal savings & loan corporation

Member Canada Deposit Insurance Corporation
248 King St. (Just South of Dominion) 526-4296
Mountainview Mall 526-2273

Electric heat for your new home?

Of course!



Do it with wood, the SUREFIRE way

Install the Surefire wood/electric furnace to cut your home heating costs with thermostatically controlled wood central heating - which switches automatically on demand to silent dependable electric heat so your home will always stay warm. Now you'll have the choice between two efficient heating systems in one, and you'll never be without heat in the event of a power failure. Your Surefire dealer will show you how this heating system can pay for itself over and over again as the savings mount up.

Wood/Electric Combination Furnace

SUREFIRE

Energy efficient ideas

people are

warming up to.

HERB Carpenter LIMITED

PLUMBING - HEATING - SHEET METAL

181 CHARLES ST. 526-5204