

# Shoppers Mart

WHERE BUYERS & SELLERS MEET!

## FARMERSMARKET

Vespra Heights Farms offer for sale Yorkshire Boars and gilts from their large, well established herd. Duroc and Duroc York boars also available. A-1 related bloodlines. Delivery arrangements can be made. Les Morgan. 726-6074. 21TF

14 one year old Hereford steers. One sale \$500 each. Phone Vic Irish 534-7917. 37to40

One Appaloosa gelding, 3 yrs. old, green broken. Priced reasonable, 322-1085, 5-9 p.m. 39,41

For Sale: 16 ft., 7 bar 100 wall tube gates, \$100; cattle squeezes, \$375; round bale feeders, \$250; heavy-duty rb. feeders, \$250; 6 ton wagons \$390; 424-5108. 39,41,43,45

Yorkshires, bred gilts, ROP tested, low back fat, fast gaining. Also have service boars. Bob Locke, Coldwater, 686-7277. 39,41

For Sale - Polled Charolais bulls aged from seven months to eighteen months. Paul Bertram, 322-1659. 39to41

## CARS&TRUCKS

**UNDER \$200. A Month**

(less if you have a trade in) for the use of a new Dodge Truck for four years - 10 to choose from, tax extra - Call Des Carpenter for details,

**526-3777**

anytime. 28TF

1977 Comet, as is, \$500. Call 361-2959. 37to39

1982 Dodge Rampage, auto., sports package, only 22,000 km, \$6800. Also 1975 Corvette, auto., 66,000 miles, \$7800. Central Marine 526-4088. 37to42

Paying Too Much For Your Automobile Insurance - Contact Gervan, Davy & Assoc. Insurance Brokers Ltd. Telephone 526-9345. Ask about our safe driver discounts. 39to70

1976 Meteor 4 dr, auto, ps, pb, new paint, brakes and rad. Good condition. Phone 534-4008. 39,40

1976 Dodge Aspen 2 dr, hardtop, 6 auto, ps, pb, sun roof, 64,000 miles, \$1895 certified. 526-2726. 39,40,41

Truck for Sale: 1977 International, four wheel drive. Will sell certified for \$3500, 322-1490. 39,41

## WORK WANTED

Day Care available in my home with hot lunches. Call Phelpston 322-2980. 39,41

## WORK WANTED

Work Wanted—Renovations, additions, painting and wallpapering, electrical and plumbing. No job too small. W.D.P. Developments Ltd. Wilf Martin, 534-3148. 13TF

Class A mechanic w. Class A Driver Lic., Truck & tractor deisel experience, also electrical & hydraulic. Seeks position, call 322-3156 anytime 37,39,41

## REAL ESTATE

Large commercial building, Main St., Penetanguishene. 2500 square feet with 2 apartments and 2-car garage. (Make a terrific restaurant) \$140,000. Call 549-3155. 37,38,39

## Classified ads get results

### REAL ESTATE

House for sale: Garage, 3 bedrooms, 2 bathrooms, dinette, kitchen, livingroom, family room, laundry room. Also has workshop, recreation room, and new carpets. Newly decorated with new furnace. Terms arranged. 726-0850. W37 to W43

110 acre farm, 100 workable sandy loam. Four bedroom house, barn, silo & sheds. Located on Tiny Twosp. Con. 2 (os). Asking \$135,000, private sale. 322-1545. 39,41,43,45

## REAL ESTATE

**BOWES & COCKS REAL ESTATE**  
Midland, Orillia & Barrie Triangle

1 1/2 story, 9 year old home in Medonte, full high basement with wood stove, patio doors, nice view. Just reduced to \$42,900. with good terms. Call Gord Whiston 935-2519.

Opportunity knocks - legal 6 plex fully rented \$1,607 month income, \$25,000 down with 10 percent financing. Try an offer. Dennis Blume 325-1674. 39

**SUNSET BAY ESTATES**  
Pine and mahogany homes overlooking Georgian Bay.

Only \$29,900. Low down. Summer completion  
Call now 549-2624  
24 hours 38TF

**SAWLOG BAY BUILDING LOTS**  
Hydro, phone, town water. Recreation facilities.

\$9,900. \$100. DOWN 10 per cent financing  
Call now 549-2624  
24 hours 38TF

## A. E. LEPAGE

(ONTARIO) LTD. REALTOR

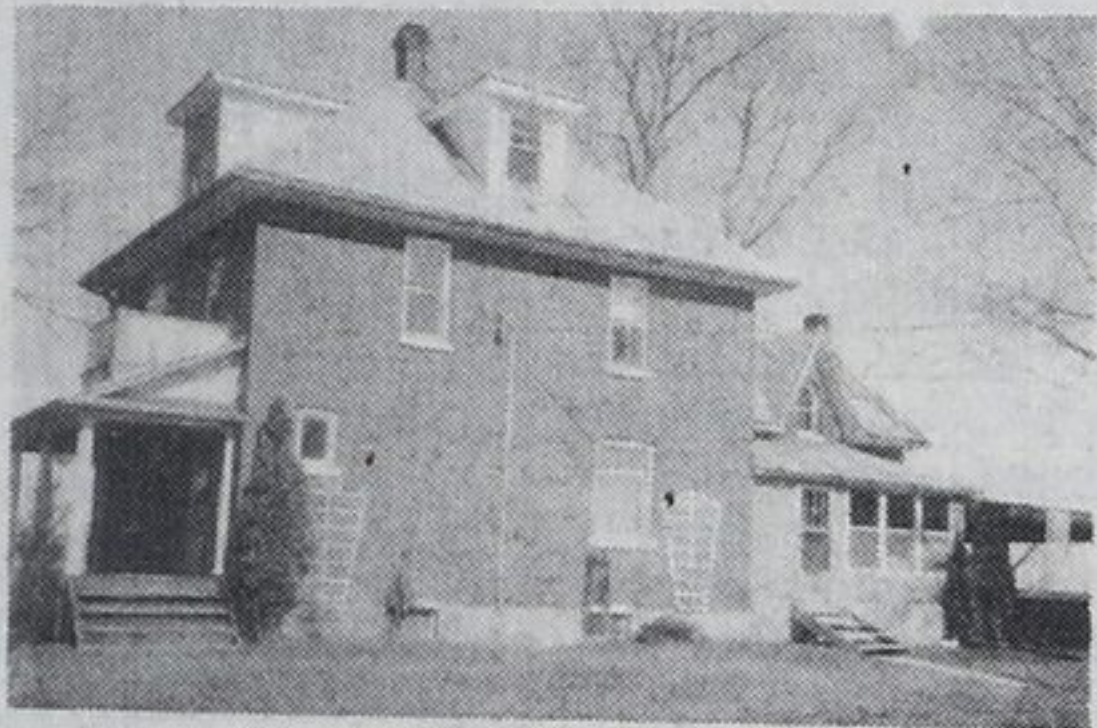
### RESIDENTIAL



**ORR LAKE STARTER HOME**  
\$32,900. Three bdrms., carpets, aluminum exterior. 90x200 ft. treed lot. Terms. Carl Davis. No. 117.



**PINE LOG HOME**  
\$54,900. Cozy year round home in cottage country. Stove, fridge, patio furniture included. A pleasure to show. Howard Heacock. No. 113.



**HOBBY FARM NEAR ELMVALE**  
\$78,900. Two storey brick home in excellent condition. Large barn and 11 acres. New kitchen and bathroom. Harry Hunt. No. 214.



**WORDS WON'T DO-MUST VIEW**  
\$114,900 over 3700 sq. ft. of country living. 6 bedrooms, den, office, family room and games room. Separate apt. for grandma and grandpa. Carol Rossel. No. 72.

## The name friends recommend

### FARMS, LOTS, ACREAGE



**A REAL HOBBY FARM BUY!**  
\$76,900. Located south of Wyebridge. Solid two storey brick home. Bush, streams and working land. 50 acres of space. Harry Hunt. No. 154.

**70 ACRES ON 14th TINY**  
\$39,900. Ideal recreation property. 2,000 pruned Christmas trees, plus a good area of hardwood. Ideal building site. Harry Hunt. No. 120.

**50 ACRES IN MEDONTE**  
\$37,900. Pines at front, hardwood at back. Level property near Orr Lake. Reduced to sell NOW. Harry Hunt. No. 141.

**EAST OF ORR LAKE**  
\$105,000. 11 room, 1 1/2 storey home, pool, 95 ac., barn, stream, mixed bush, prime hunting area. Ideal Hobby Farm. Carl Davis. No. 144.

**LARGE LOT LOVERS**  
\$19,500. Treed lot facing Orr Lake Rd. north, approx. 300 ft by 250 ft. Water access. Carol Rossel. No. 172.

### VACATION



**GOOD LOCATION**  
\$40,000. Nice clean winterized cottage, fully furnished, close to water and stores. Howard Heacock. No. 155.

### BUSINESS OPPORTUNITIES



**MECHANICS DREAM**  
\$175,000. Located on Hwy. 92 on busy Wasaga Rd. Gas, 2 bay with hoist, store and good living area. Harry Hunt. No. 215.

Elmvale, Ont.  
**322-1381**

Carl Davis 322-2962  
Carol Rossel 322-2324  
Harry Hunt 322-1998  
Howard Heacock 322-1753

## LOU GOEDEMONDT REAL ESTATE LIMITED

**322-2331**

184 Queen St. W.,  
Elmvale

**549-3223**

Midland and  
Penetanguishene

OPEN 7 DAYS A WEEK  
5 Offices in Simcoe County

### RESIDENTIAL

YEAR-ROUND Cottage home at Bluewater Beach. Short walk to beautiful sandy beach. Home well kept. Asking \$47,000. 322-2331 443 / 84

CLOSE TO BARRIE - Country living in this 2 bedroom Aluminum bungalow. Situated amongst the trees on a large 1/2 acre lot. Asking \$48,500. WAVERLEY AREA - 1/2 Acre wooded lot, 2 bdrm., bungalow year round paved road, Asking \$46,000. 322-2331 441 / 84

### ACREAGE

APPROX. 5.7 ACRES of vacant land in Elmvale. Proposed 8 building lots. River runs thru end of property. Survey available. Asking \$69,900. 322-2331 393 / 84

WANT TO BUILD your dream in a beautiful country setting? Nearly nine acres with Wye River frontage. Ideal hobby farm potential in exclusive area with food road access. Asking \$29,900. 322-2331 220 / 84

25 ACRES - North of Elmvale. Mixed bush. Terrific for retreat, hunting, or residential estate. Only 2 miles from Woodland Beach. Asking \$28,900 322-2331 1587 / 83

FARM HILLSDALE AREA: 103 acres just off Mt. St. Louis road. 1 1/2 Story brick house and out buildings. Once in a life time buy. Asking Price \$98,900. Must be sold. 322-2331.

Bill Evans 322-1575 Jack Fleming 322-1655  
Cecilia Taylor 549-3223 Ike Kostic 424-0571  
Joe Rzepecki 549-3223

## Century 21

CANADA'S LARGEST ORGANIZED  
REAL ESTATE GROUP  
Coast to Coast

Over 500 Century 21 Offices  
Coast to Coast in Canada

CENTURY 21

REAL ESTATE LIMITED

More homes are sold every day through Century 21 offices than any other real estate group in the world.

Midland Office  
317 Midland Ave.  
526-7881

Honey Harbour  
756-8011

(Each Office Independently Owned and Operated)



### JUST LISTED

**GOOD STARTER HOME** 1 1/2 storey 150' lot. (County Rd. 6) Elmvale. 3 Bedroom, \$38,000. Try an offer.



Open House Sat. May 19, 1-3 p.m., Conc. 3. A PLEASURE TO SHOW - Year round home, 6 yrs. old, 150 yds. from Woodland Beach, 3 bedroom and garage, treed lot, quiet street. \$77,000. Don't wait.



COUNTRY BUT CLOSE to Elmvale on Hwy. 27. 3 Bedrooms, 2 decks, garage, large M/B, lot 150x100. \$41,900.

BUILDERS SPECIAL. Three building lots on County Rd. 6, 1 1/4 miles north of Elmvale. \$10,000 each.

Call Linda Straiko  
322-3196

39