

Shoppers Mart



ONLY \$2.75
Includes 2 insertions (15 words or less)
FREE Garage Sale signs.
Midland Times 526-2283
Elmvalle Lance 322-1871 Penetanguishene Citizen 549-2012

YARD SALE
Saturday,
October
1, 1983
AT THE
CASTLE VILLAGE
Balm Beach Rd.,
10 until 3
65 to 78

Yard sale to be held Sat., Oct. 1 83 from 10:00 a.m. till 2:00 p.m., at 1033 Glen Eagles Crescent, Midland, Ont. Various household articles, clothing, miscellaneous. Will cancel in case of rain. 78

Furniture and appliances and many extras. Curry Road, off Midland Point Road. Oct. 1,2, 9 a.m. 77,78

Gigantic Lawn Sale, Sat., Oct. 1, 9 a.m., 44 Harriett St., Penetang. In case of rain, postponed to following Sat. 78

Large Garage Sale Sat., Oct. 1 from 9-? 75 Robert St. W., Penetang. 78

Garage sale-12th Conc. and 6 County Rd., Tiny. Crafts, furniture, misc. articles, Sat., Oct. 1. 78

Support a good cause. Garage sale at 49 Church St., Penetang, Sat., Oct. 1, 9 a.m. Proceeds towards Christian Service Brigade, Penetang. Wide variety of goods. Coffee and baked goods. 77,78

Multi-family garage sale, Saturday, Oct. 1, starting 9 a.m. at 995 Howard St., Midland. 77,78

Garage sale, Sat., Oct. 1 at 750 Ottawa St., starting 9 a.m. Miscellaneous items. 77,78

Saturday, Oct. 1, 9 a.m. to 1 p.m. 795 Victoria Street, Midland. Assorted household items. 77,78

Garage sale Sat., Oct. 1 at 635 Dominion Ave., Midland 9 to 4. If rain, Oct. 8. 77,78

Garage sale, Sat., Oct. 1 at 277 Hanly St., Midland, 9 a.m. to 12 noon. Cancelled if rain. 77,78

WORK WANTED
Custom combining. Phone Wayne Brownridge 428-2216 or Owe Brooks 428-5973. 68TF

HELP WANTED

HELP WANTED

THE CORPORATION OF THE TOWN OF MIDLAND AND THE MIDLAND HARBOUR COMMITTEE

Requires A **DOCK MANAGER (SEASONAL)**

SUMMARY OF DUTIES

- To collect associated fees from seasonal and transient boaters and to allot berthing spaces.
- To supervise the upkeep and maintenance of the dock area, harbour office and public washrooms.
- To supervise seasonal employees.
- To maintain a good working relationship with Federal, Provincial and Municipal agencies.
- To greet and assist visiting boaters at the Town Dock.

QUALIFICATIONS

- Applicants should have boating and marine knowledge and possess a V.H.F. licence.
- A knowledge of the area is of importance to be of assistance to the boaters.
- Bilingualism would be an asset.
- Have strong record of good public relations skills and organizational abilities.
- A mechanical and electrical knowledge would be an asset.

The starting salary will be commensurate with experience and qualifications.

Please apply in complete confidence giving a detailed resume of qualifications and experience to the undersigned by October 12th, 1983.

Wm. D. Nicholls, Chairman,
Midland Harbour Committee,
575 Dominion Ave.,
Midland, Ontario. L4R 1R2

Telephone: (705) 526-4275
78-79

ANNOUNCEMENTS

The Stanway School of Dance, announces fall classes beginning in Classical Ballet, Hawaiian Hula, and Graded Tap System. Phone 526-2326 for Registration. 71 to 78

PERSONAL

Telecare 526-7836 -24 hour confidential listening. Someone who cares is as close as your telephone. 49FTF

Helping other help themselves. Counseling, referrals, group counseling. Adult volunteers needed. Training courses provided. Call 9-5, Mon.-Fri. 526-3915. Addiction Outreach Simcoe County Inc.-Midland, 510 Bay St., Unit 6. Barrie, 30 Bayfield St. 70TF

Family, marital and individual counselling available at the Family Life Centre. Call 526-9397. 72 to 80

REAL ESTATE

50 acres hobby farm for sale, 10 acres of hardwood bush, 3 miles from Penetanguishene. 4 bedroom house, renovated, basement finished, oil and wood heating, 20 by 50 heated workshop and also barn. Write to Penetang Citizen, Box 429A, Penetang, Ont. L0K 1P0 77,78,79,80

Midland, 3 bedroom 1 1/2 storey aluminum siding on 96 x 46 lot close to schools and store (east side). Paved drive, fireplace, tastefully decorated. Reduced for quick sale 526-4398. 77,78

Buying or selling- We Get Results

Making it easier just for you, our customers



TENDERS

DECOR metal products
DIV. FIRESTONE CANADA INC.

Snow Removal 1983-1984

Tenders are required for the following:
Plant No. 1 - 140 Bay Street, Midland
Plant No. 2 - 105 Fourth Street, Midland
Plant No. 3 - Centennial Drive, Penetanguishene
Plant No. 4 - 420 Heritage Road, Midland
Tenders may be placed on any or all locations. Clearly marked envelope 'Snow Removal Tender' and address to:
Purchasing Manager,
Decor Metal Products,
140 Bay Street,
Midland, Ontario. L4R 4L5
Tenders close October 11, 1983.
For detailed requirements, call 526-5451, ext. 45. 77,78,79

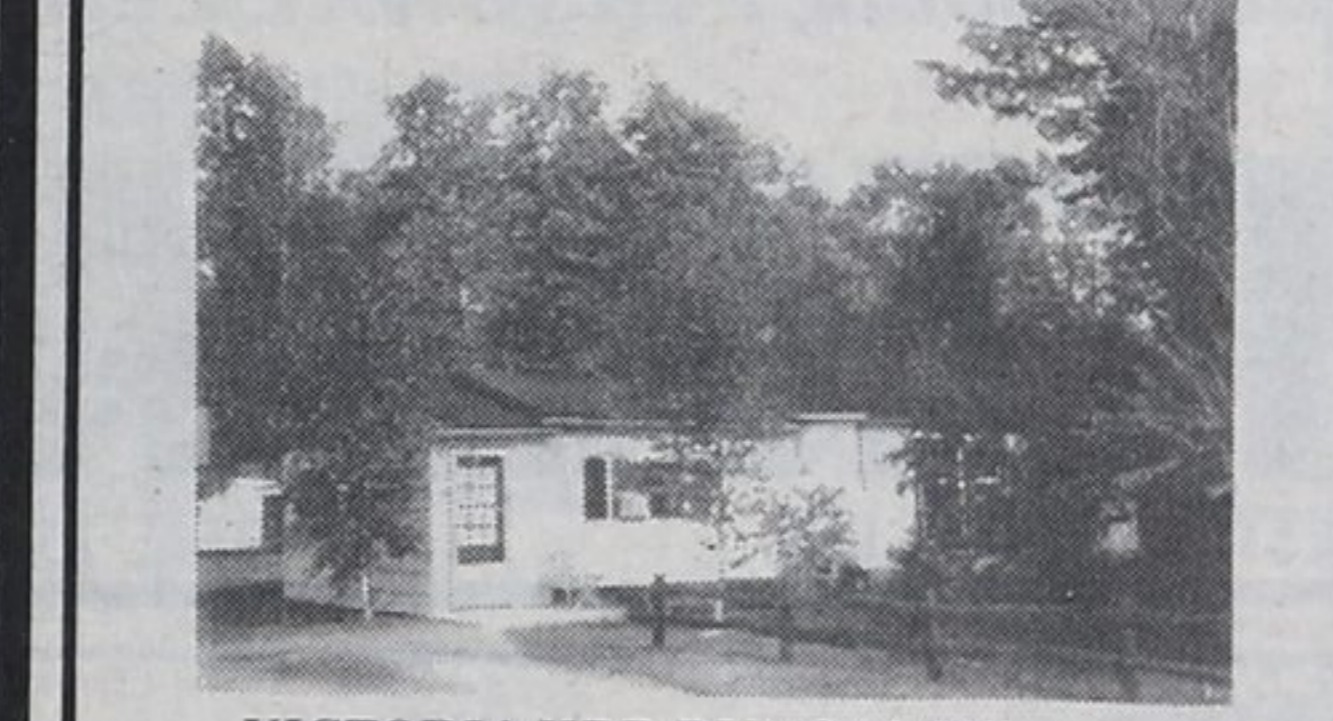
TENDERS

MARINA IN PENETANGUISHENE FOR SALE BY TENDER

The property is known as BAY'S END MARINE AND AVIATION. It is at the head of Penetang Harbour and is within the Town of Penetanguishene, in the County of Simcoe. The total property of approx. 35 acres has access to Champlain Road. and has approx. 2,700 ft. of water frontage. Presently the marina is operating with approx. 140 slips and 3 main buildings. First mortgagee on the land will receive sealed tenders for the purchase of property in accordance with the conditions of sale up to 4 p.m., Friday, Oct. 14, 1983. The highest or any tender will not necessarily be accepted. The property will be sold to power of sale provisions contained in the first mortgage registered on the land which said mortgage is registered in Registry Division of Simcoe (51) and will be sold free from all incumbrances and pursuant to the conditions of sale contained in the formal Tender, which may be obtained along with details and particulars from
Siskind, Cromarty,
Barristers & Solicitors,
471 Waterloo St., London, Ont.
N6B 2P5
1-519-672-2121
Solicitors for the Mortgagee 76,78

A. E. LEPAGE
(ONTARIO) LTD. REALTOR

RESIDENTIAL



VICTORIA HBR BUNGALOW
\$44,900. Large steel shed on the property. Severence Possibilities. Steps from park and beach. Cozy home or seasonal retreat. Vince Evenden. No. 1.



PENETANG
\$29,000. Starter home, handy location. Try an Offer! Bonnie O'Rourke. No. 2
2-STOREY DUPLEX 2-CAR GARAGE
\$49,900. 3 bdrm. apt., eat-in kit., liv. rm., separate dining rm. with ground floor 1 bdrm. apt. Separate entrance. Ideal for family and parents. Marjorie. No. 3

WATERFRONT

WATERFRONT CLOSE TO MIDLAND
\$54,900. 2 bdrm. cottage on Georgian Bay. Furnished, 100 ft. frontage. Great boating and fishing area. Yours to enjoy. Partially winterized. Marjorie. No. 5

The name friends recommend



WAGNER'S BEACH WATERFRONT
\$77,000. 3 bdrm. winterized bungalow on 100 ft. water frontage, brick fireplace, lovely treed lot. Also a 2 rm. cabin with kit. sink, cupboards. Marjorie. No. 4



MIDLAND POINT
\$100,000 last home on McArthur Drive. Peace & Privacy. Fabulous view. 3 bdrms, fireplace. You should see it! Vince Evenden. No. 6

FARMS, LOTS, ACREAGE

BUILDING LOT-FARLANE LAKE
\$9,500. Approx. 120 ft. frontage on Blue Jay Court. Beautiful tall maples. Marjorie.

\$15,000. Cottage 100 ft. to water access at Farlane Lake. 50 x 135'. Marjorie. No. 7
25 ACRE FARM IN LAFONTAINE
\$89,900. Lovely home with modern kit., formal dining rm., woodstove, full basement, laundry rm., workshop, 4 out buildings include lge. greenhouse. Marjorie. No. 8

72 ACRES CLOSE TO MIDLAND
\$43,500. 1,000 ft. frontage on Con. 3, Old Fort Rd. Good paved rd., newly built homes in area. Approx. 3 miles off Hwy. 12. Marjorie Contois. No. 9

Highway 93, Midland **526-4271**

MIDLAND		COLDWATER	
Dave Bridgeman	549-3693	Nancy Cardwell	526-9791
Marjorie Contois	534-3634	Bob Snider	686-7916
Vince Evenden	526-4032	Elmer Strongitharm	686-7960
Bonnie O'Rourke	526-8413	Margot Strongitharm	686-7960
John O'Rourke	526-4618		
Jack Scott	361-2409	ELMVALE	
Bob Sweezy, Appraiser	526-3985	Carl Davis	322-2962
Mary Thompson	533-3246	Howard Heacock	322-1753
		Harry Hunt	322-1998

Manager-Tony Gilchrist