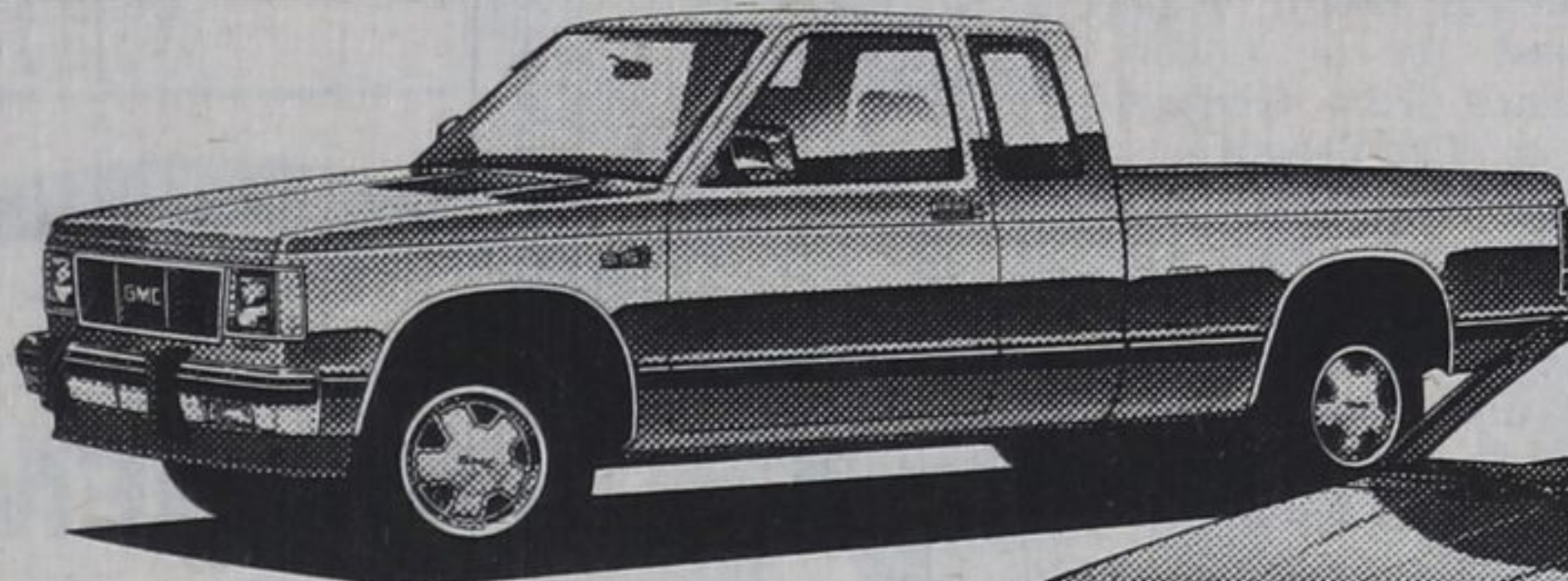


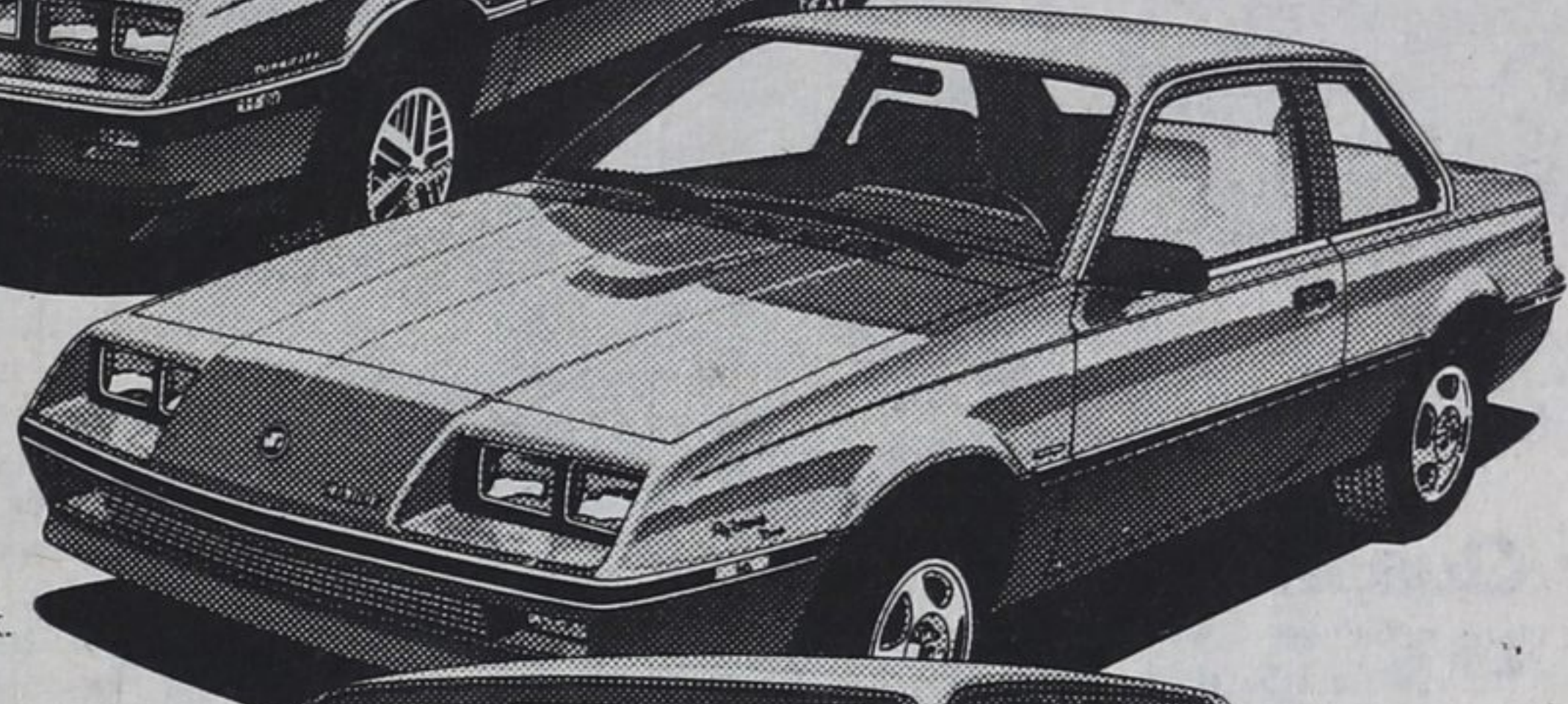
WE'VE GOT THE HOTTEST FLOOR SHOW IN TOWN!



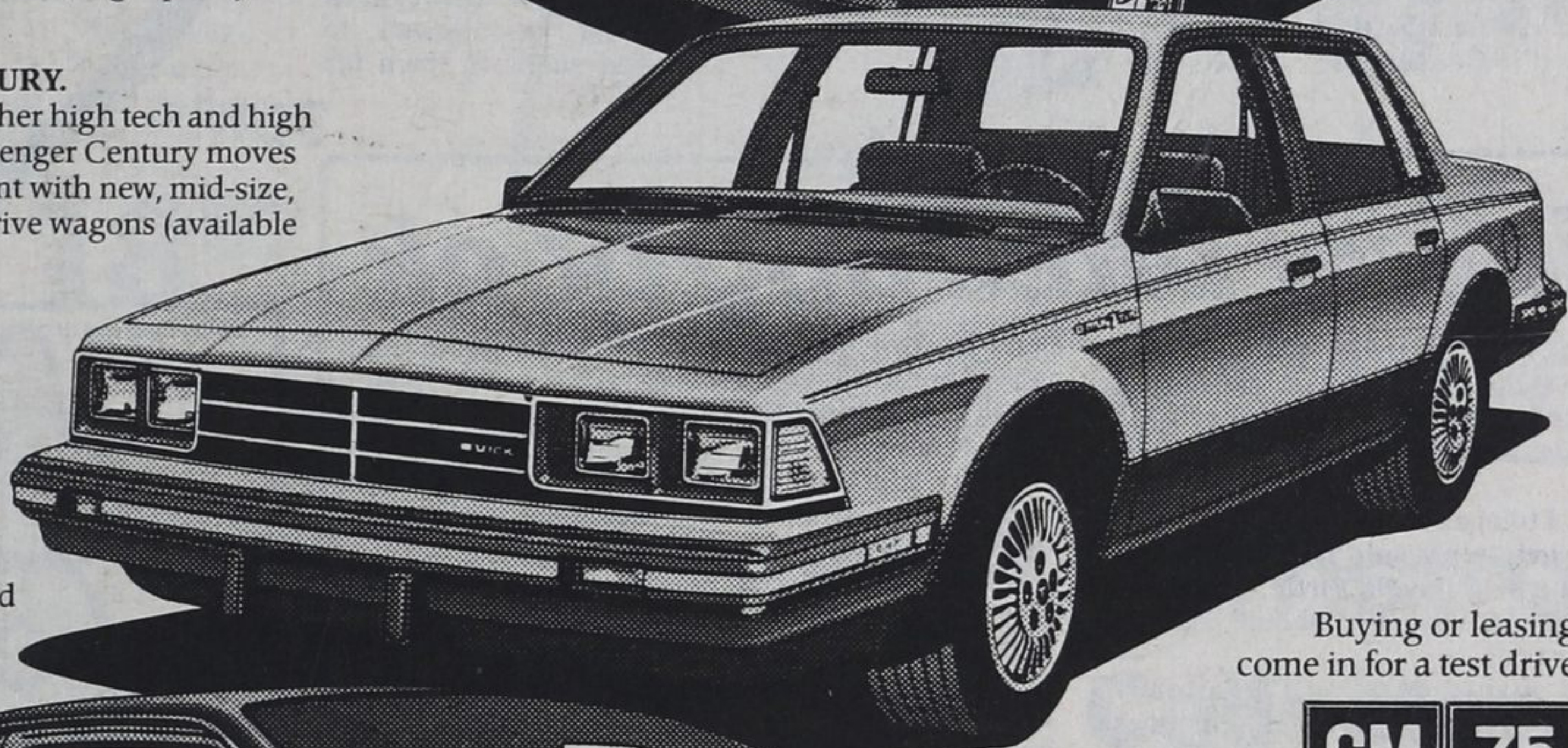
GMC S-15.
The complete line of compact Pickups and Club Coupes (gasoline or available new diesel) and S-15 Jimmys.



PONTIAC 2000 SUNBIRD.
Our largest front-wheel-drive family now offers more turbo models than any other carline sold in Canada.



BUICK SKYHAWK.
Trim-size elegance in our smallest Buicks. High technology makes it possible, high quality makes it Buick.



BUICK CENTURY.
Bringing together high tech and high value, six-passenger Century moves farther out front with new, mid-size, front-wheel-drive wagons (available late fall).



PONTIAC FIERO.
It's here, North America's only mid-engine production car ever, and the first two-passenger Pontiac. Non-rusting Enduraflex body panels help make Fiero unique. As well as exclusive. Only Pontiac's got it!

Buying or leasing, come in for a test drive.



Never have we introduced such a total, all-encompassing lineup of cars and light trucks. Whatever you have in mind for '84, we've got it for you in great style.

Looking for economy with flair? We have Acadian and Pontiac 1000 hatchbacks, five-passenger Buick Skyhawks and the most models ever of Pontiac 2000 Sunbird. You name it, we have it!

Subcompacts, compacts, mid-size and full-size Pontiacs and Buicks, sporty cars, family cars, personal luxury cars, a full range from two-passenger Fieros to eight-passenger Parisienne station wagons, even a couple of convertibles. From thrifty 4-cylinder engines through V6s and V8s, gasoline or diesel, we've also got your kind of power.

Not to mention our fabulous GMC trucks for '84, from compact S-15s, now including small diesel pickups, to full-size gas or diesel pickups, Suburbans, Jimmys and Vans.

Come on to our place and let us prove that, dollar for dollar, model for model, our 1984 cars and trucks present the hottest floor show in this or any town!

Some equipment shown or mentioned is available at extra cost.

PBG-184

SEE THE NEW 1984's... •Thurs. & Fri. - 9 a.m. to 9 p.m. •Sat. 9 a.m. to 5:30 p.m.
JOIN US FOR COFFEE & DOUGHNUTS!

STONELEIGH

MIDLAND

Pontiac
Buick
Cadillac

Hwy 93, just N. of Yonge St. 526-3724