

# Lackie seeking re-election as deputy-reeve of Tiny

by JOHN LACKIE  
I, Deputy-reeve John Lackie, am seeking re-election in Tiny at a time when the Township faces many challenges. Totally opposed to any annexation of our township by Midland, I want to see the fight through to the end. I hope it can be resolved without a long, costly

procedure, but I am prepared to go the court route if necessary to protect our Township. I am committed to finding an early solution to the Pauze landfill site problem. The Ministry of Environment must take its full responsibility for the situation. They made the rules, so let them get busy and

solve the problem. Ultimately, a long-term solution will be a new dump site, owned and managed by the North Simcoe Sanitary Landfill Committee.

The Parks and Recreation Master Plan, about to be started, will identify the recreation needs in the

area and begin planning to meet these requirements. This will help us better utilize our recreation resources. I predict an ever-increasing need for senior citizen housing and I want to see an extension of health services for retired people.

I would like to see

major improvements in the County Road 26 from Charlebois Corners into Penetanguishene. This should be a joint County-Township venture. Being a member of the Simcoe County Roads Committee will facilitate this planning.

I recognize the need for strict controls over

aerial spraying of pesticides, to ensure public safety, but also realize the necessity for pesticide use in agriculture. Many jobs are created by the agricultural industry in our township.

I have served the Township of Tiny as a Councillor for four years, and as Deputy Reeve for a further four years. As Deputy Reeve, I have a seat on County Council, where I served on the Health Unit and the Roads Committee.

I have sat on the Board of Directors of the Penetang General Hospital for 10 years, serving as Chairman for 2 of those years. I gave up the Chairman's post because of other



commitments, but am still a member of the finance committee of PGH.

I am committed to the future of the Township of Tiny, and am ready for another term of dedicated service.

## John David Morgan, candidate



by JOHN DONALD MORGAN

Hello citizens of Tiny Township. John Donald Morgan is my name and as a candidate for Tiny Township council, I

would like to leave you with the following comments for your scrutiny.

1. I am opposed to annexation for the following reasons:

—servicing the land is not the issue, assessment is.

—the 2,600 acres in question is, in effect, doubling the current size of Midland and as yet, Midland has not attended to the servicing of the land which is already under its jurisdiction.

—if annexation should become a reality, the

Ontario Government has the wedge it requires to renew its policy of establishing Regional Governments, i.e. Cambridge, and is this what we want?

2. The landfill site issue upsets me a great deal because the source of many small streams feeding Georgian Bay originate from the area of this abomination. I am also upset at the Province and other government representatives for their reluctance in addressing themselves to any alternate measures

that might be implemented.

i.e. incineration or selective waste disposal (the latter could be a revenue maker and might well help to reduce taxes).

3. Township parks and recreational areas should be just that, for Township residents. Why should we, as Tiny Township citizens, be subsidizing the Provincial Parks and at the same time, be spending our Municipal tax dollars to supplement these by providing open

Township parks.

4. Many people may not be familiar with the Ministry of Natural Resources Land Use Strategy for Huronia. If not, you should obtain a copy from the Midhurst office and read the section E: page 43 Recreation Targets. Tiny Township has recreational appeal and I wonder just how many of these new facilities are targeted for our area. I might add, and at whose expense monetarily and emotionally... i.e. Wasaga Beach.

## William Ogilvie: opposes annexation

by WILLIAM OGILVIE

I own a dwelling and four acres of independence in the Township of Tiny. I am married to the former Genevieve Blondin who hails from Lafontaine, and we have a son Andre, who attends St. Joseph's Public School in Penetanguishene.

On Nov. 8, 1982, the electors of Tiny Township will choose by majority vote, the five candidates who will be charged with the serious responsibility and authority to manage our municipal government for the next three years.

The following is an outline of those issues which have highlighted Tiny's municipal electioneering thus far:

### Annexation:

Annexation will be one of the key issues in the forthcoming municipal elections. It is indeed the prime factor in my seeking election to Tiny Township as Councillor. As a member of Tiny Council, I feel I can more effectively resist the high-handed and arrogant attempts by certain self-serving

Nov. 20

Annual bazaar of Willing Workers of Elmvale Presbyterian Church, soup and pie lunch, sittings 11:30 a.m., 12 p.m., 12:30 p.m., 1 p.m. Tickets from members or at Volletts.

Midland politicians and their friends, to grasp a significant part of Township's commercial and residential lands.

Those same sabre-rattling political pawns who have orchestrated the attempted annexation land-grab, including Midland's Chairman of Finance, who is seeking the office of mayor, are largely responsible for incurring the largest debenture debt in Midland's 102-year history. That debt (principal and interest), is reported to be now in the order of between 12 and 15 million dollars. The cost of paying the interest on Midland's mortgage is enormous. Obviously,

The area involved in the attempted takeover, amounts to 2,600 acres of land at an assessed value of \$1,500,389. The yearly loss of tax revenue on this amount of assessment would come to \$315,000 and upwards. According to Tiny Township's administrative officials, this loss of revenue, would seriously hamper a number of municipal programs, and the taxes on the little homeowner and cottager could escalate dramatically.

### Environment:

Tiny Township Council should be in the forefront in providing environmental protection.

Not only is it im-

perative from the standpoint of the health and welfare of the Township's residents, but it is also essential in maintaining and attracting the tourist industry, which constitutes a very large part of Tiny's total assessment. In addition to the tourist industry providing 70 percent of the municipality's tax revenue, by way of summer and many year-around dwellings located along the stretch of the Township's 45 miles of shoreline there is also a significant financial spin-off for adjacent municipalities.

If elected to Tiny Township Council, I will press for the immediate establishment of an Environmental Protection Committee, to be composed of council

representation and citizens from the various geographical areas of the Township. This committee would assist in monitoring and safeguarding the environment of the municipality's 99,878 acres of land and 45 miles of shoreline.

Senior Levels of Government should assume school tax levy. It is little wonder that Tiny Township taxpayers are angered over the staggering financial burden they have had to assume in satisfying the demands of the various school boards, which in 1982, amounted to 68.43 percent of Tiny's total municipal tax bill.

If municipalities are to remain afloat financially, it is essential that the senior levels of government remove economic



millstones of school levies from around the necks of the increasingly impoverished homeowner.

I would like to stress that each Citizen has an opportunity to play his or her part by electing those candidates whom you feel will best serve the interests of Tiny Township and its Citizens.

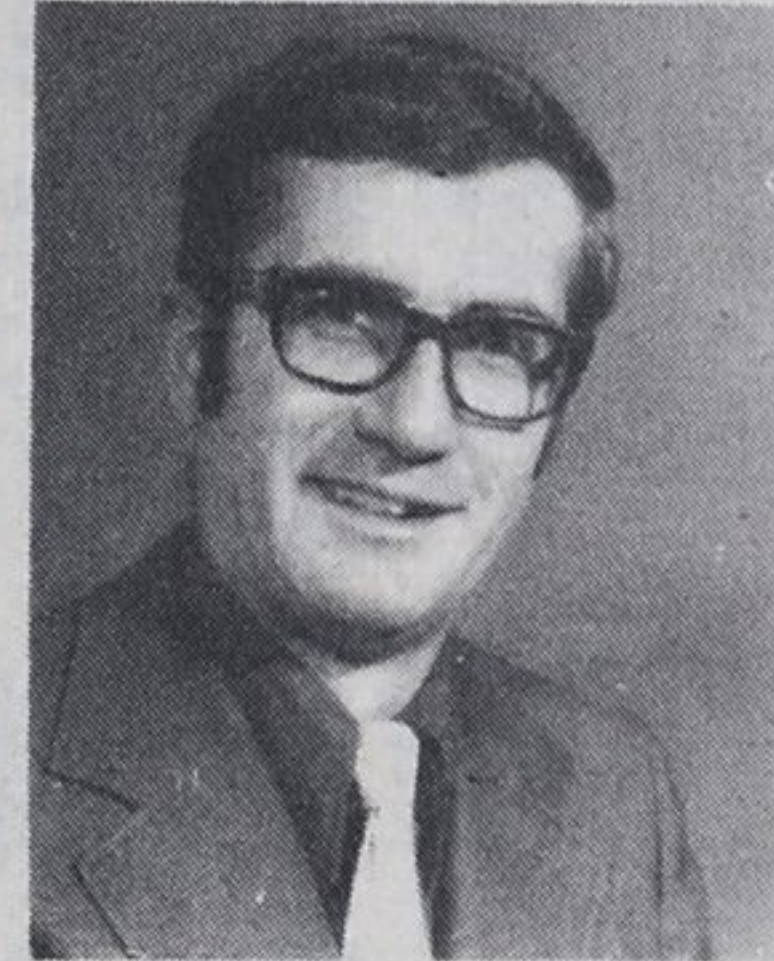
If, after considering my presentation, you feel I warrant your support, I would appreciate greatly, your vote on Nov. 8, for the Office of Tiny Township Councillor.

VOTE  
**TED HALL**  
COUNCILLOR

Township of Tiny  
Monday, November 8, 1982

- Working toward satisfaction on landfill site
- Fighting against annexation
- More parking at beaches for residents

Nov. 8 ELECT



John Morgan X

Tiny Township Council



RE-ELECT  
**JOHN LACKIE**  
Deputy Reeve  
Township of Tiny

### Experience Counts

- 4 years Township Councillor
- 4 years Deputy Reeve
- 10 years as a director of Penetanguishene General Hospital (2 years as chairman)
- 2 years on Simcoe County Roads Committee
- Self employed, creating employment for 7 to 10 Township residents
- "We build swimming pools"
- civil engineer and member of Association of Professional Engineers of Ontario

### Programs count

- 1) Early resolution of the Pauze landfill problem, by forcing the Ministry of the Environment to accept their full responsibility in this matter.
- 2) Complete the planning and development of our own municipally owned and operated sanitary landfill site.

**STOP MIDLAND'S ANNEXATION ATTEMPT**

VOTE  
**JOHN LACKIE**

on Nov. 8  
For a strong stable council in Tiny  
Transportation to polls—phone  
322-1674 or 549-3496

For Experience & Dedication-

Vote:

**William Ogilvie**  
Councillor for Tiny