

Add to your boating pleasure

The following is the last in a four-part series on boating. This week's article takes a look at customizing your craft and the various extras you can pick up to lend that something extra to your summer boating experience.

Half the fun of owning a boat is being able to customize it, to make it a little different from any other boat.

Not unlike a new automobile, a boat comes with most basic equipment in place. Let's consider the average stern drive runabout as you will probably see it on your marine dealer's showroom floor.

Your future family boat is sitting there, gleaming with newness. All chrome cleats and deck fittings are in place. Navigation lights are there, properly wired to that three-way switch on the dash.

Engine controls are located conveniently beside an adjustable skipper's seat, and the wood-grained wheel is hooked up to a rack-and-pinion push-pull steering cable that feeds back to the outdrive. Ignition switch and basic non reflective instruments are mounted on the panel.

Lift the engine cover and you find the powerplant neatly installed, fed by built-in fuel tanks and battery. You will also find a blower and bilge pump in place in the engine compartment. And if you poke your head up behind the instrument

● Cont'd from 21

and lead Betty Titherington in support.

High one-game winner was skip Ken Cowan along with vice-skip Goldie Faragher and lead Harry Titherington.

Consolation winners were led by skip Jean Harvey, with vice-skip Elsie McGilvray and lead Ken McKenzie.

The MLBC, located on King St., has attracted ten new members (including some from Penetanguishene) and is still open for more from Midland, Penetanguishene and all surrounding communities.

Bahá'í Faith

It teaches:

"It is incumbent upon all the peoples of the world to reconcile their differences and with perfect unity and peace, abide beneath the shadow of the Tree of His care and loving kindness."

For more information, please contact:

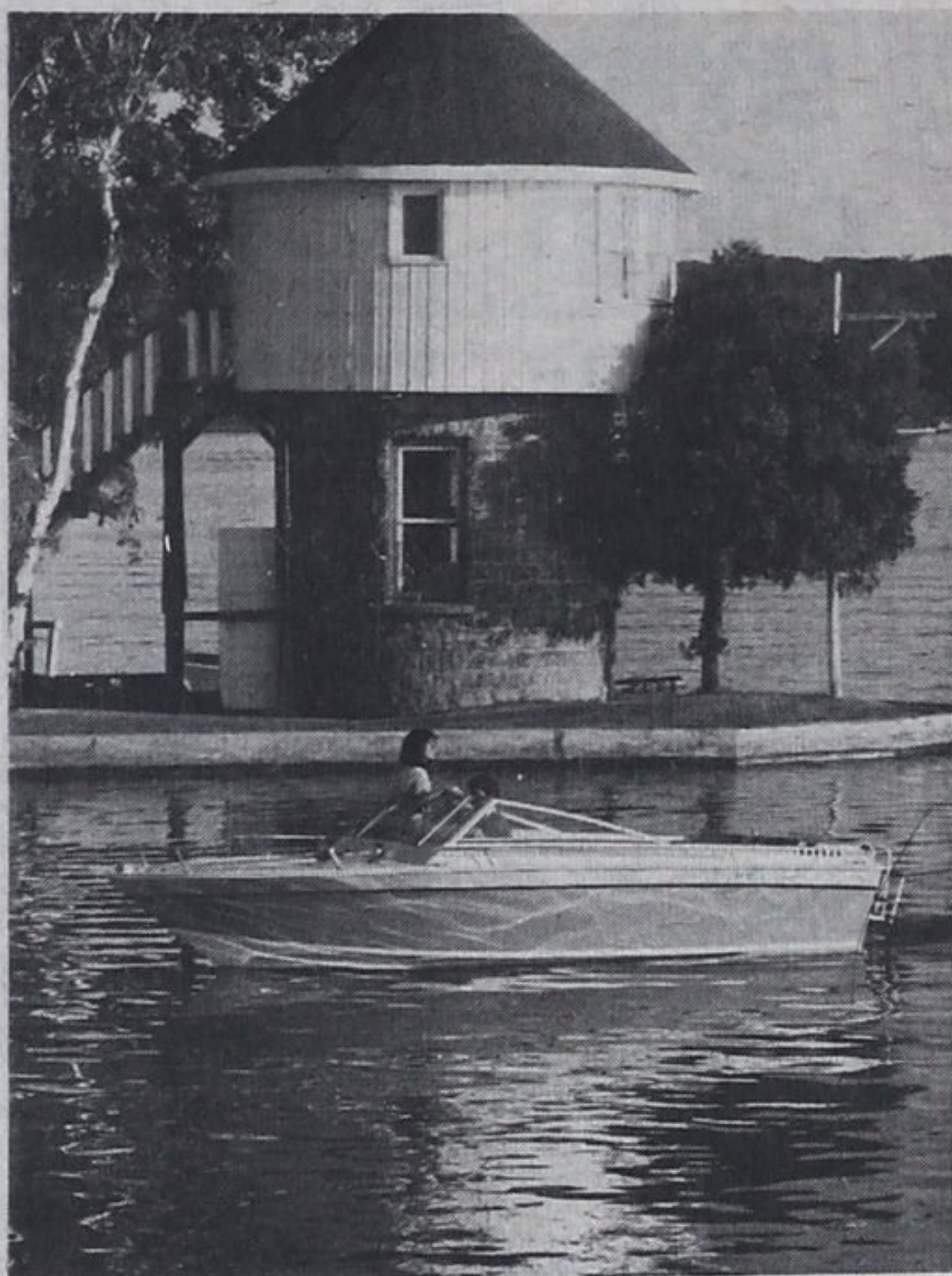
526-9532

panel, you will find all the electric wires converging there, leading to fuse blocks and switches and grounding plates.

You will also discover the convertible top where it drops out of sight into a channel with side curtains stowed and snap fasteners in place on windshield and deck.

This, then, is probably your basic boating package, scarcely a stripped-down model, but that's usually what's included when the dealer quotes his price. Add a few life jackets, lines, fire extinguisher, paddles and such and it's ready to pass a marine inspection with flying colors.

But once you become hooked on boating, and begin to regard your pleasure boat with affection, you will soon discover that there's a great deal more to a boating rig than the standard package. This is when you start wandering around marine dealer accessory displays, flip through boating magazines for new gadgets, or drop hints about a neat spotlight when your birthday



approaches.

You will soon covet a stereo sound system with tape deck that would sound great as you cruise along. You will check the merits of various types of horns; electric horns, air horns, and those that sound like the last judgement has finally arrived.

A mooring cover is a must, also a camper top that will transform the cockpit into a roomy, enclosed living room. You read that your boat model can be fitted with a super stern swim platform plus boarding ladder.

There are all types of instruments that will tell you how fast you are

going, how fast your motor is going, how many hours you have run your engine, or what direction you are travelling. There are chart lights, spotlights, C. B. radios, VHF radio telephones and even Loran C if you are the adventurous type who heads offshore on big water.

There are depth finders of many different types, digital clocks, windshield wipers.

Many of these accessories need to be permanently mounted. If you plan to do some of the work yourself, when you get started you will be amazed by the quantity and quality of assistance offered by your neighboring boat owners. There seems always to be one who specializes in electrical hook-ups, another who enjoys working with fibreglass and resin. You can have these things professionally installed, but you will miss a great deal of personal satisfaction if you don't take a crack at doing some of the work yourself.

Other accessories need no installation. You will require good bumpers, binoculars, and anchors with plenty of anchor line. And if your boat is not equipped with a galley, you will probably want to invest in a camp stove, a good cooler and a lantern as the basic

requirements for overnight trips with the family.

The list of extras is endless. It's like

collecting records or stamps, there is always something new appearing on the market to add to your hobby.

PANORAMA MOTEL THE FRIENDLY MOTEL



Serving the Midland-Penetanguishene Business Community and Tourist Industry

The very Best accommodation in the area

The Motel with one of the highest percentages of occupancy in the Province of Ontario

Awarded a three star rating by Tourism Ontario

Awarded the Certificate of Merit by Dominion Automobile Association

Classified as excellent accommodation by Canadian Automobile Association

Approved by the Ontario Motor League publication "Tourist Guidebook of Ontario"

Colour TV, Air conditioning, telephones and broadloom in every room.

Hwy. 27 & Yonge St. 526-5441

'Bridging the gap' theme for camps

Tay Township Recreation and Parks Committee in cooperation with the Ministry of Culture and Recreation will be holding day camps this summer in Waverley, Vasey, Waubashene and Gawley Bay.

There will be a registration fee of \$6 for Gawley Bay and \$12 fee for the remaining camps.

For families with more than two children attending the camps the fee will be \$13 for Gawley Bay and \$25 for the other camps.

This year's theme is "Bridging the Gap." Activities will include sports, arts and crafts, games, nature hikes, first aid, organized trips, special events and special visitors.

The camps will be available for

school age children from five years to 13 years old. The Waubashene and Gawley Bay camps will be held for two weeks and one week respectively and Waverley, Vasey Senior and Vasey Junior camps will be held on a rotating basis during the remaining days.

The camps will be staffed by one supervisor and three counsellors. The camps will begin July 5 and end Aug. 27. Registration forms may be obtained from the following people: Mrs. Grigg - Waverley, Mrs. Bowers - Old Fort, Mrs. Graham - Vasey, Mrs. McKinnon - Gawley Bay, Elementary schools and Hook's store - Waubashene.

For further information please contact: Laurie Graham (534-7313).

THE SIMCOE SOUTH
PROGRESSIVE CONSERVATIVE ASSOCIATION

is disappointed to announce the

CANCELLATION

of the **Brian Mulrone**

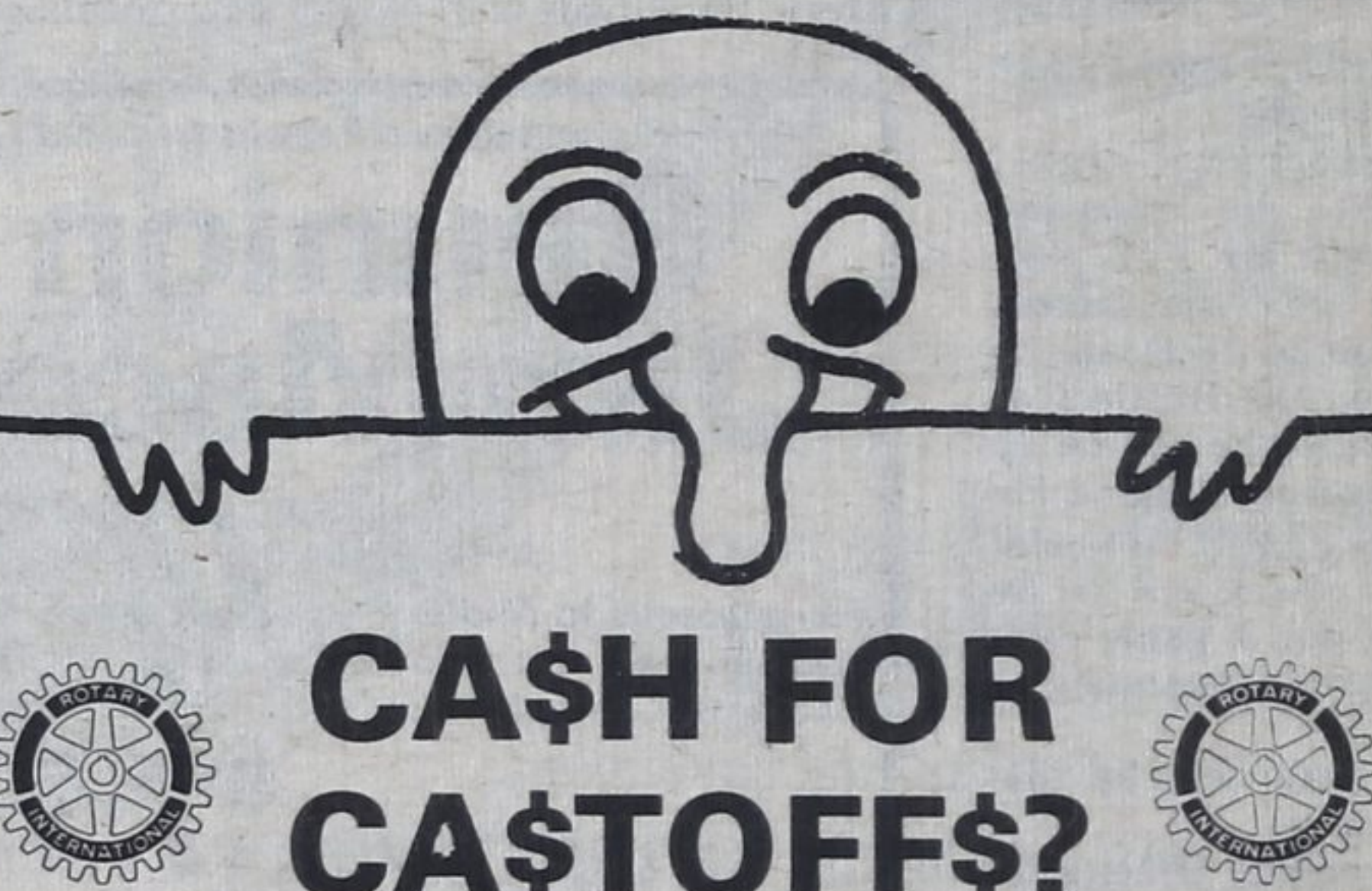
Dinner

on Monday, June 21, 1982,
Holiday Inn, Barrie

(Mr. Mulrone, for personal reasons, is unable to attend).

The Association hopes to reschedule a similar event this fall.

ALL TICKET HOLDERS WILL BE REIMBURSED.



CA\$H FOR CA\$TOFF\$?

Is there a garage sale in your future?

Have up to 10,000 people see your wares

& have a ball yourself July 1st.

Join the Rotary Club's

WORLDS LARGEST DOCKSIDE GARAGE SALE - Thurs., July 1st

Rent a 20x24 open air sale stall on Midland's Town Dock for only

\$20.00

Call your Rotarian Landlords

Clint Truax at 526-7833

Nelson Cote at 526-2213

Act now-less than 100 spaces