

# BEAVER COTTAGES



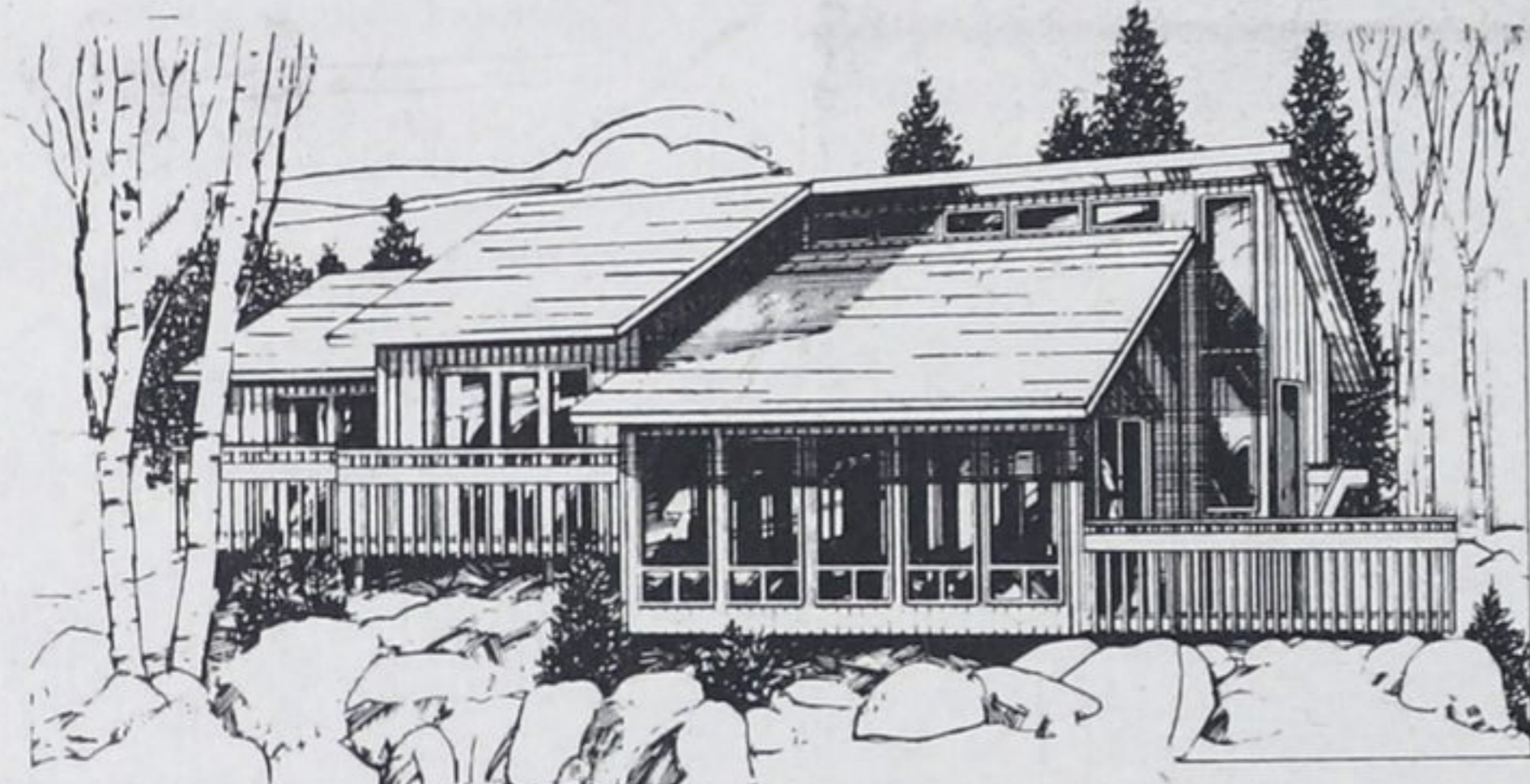
## A Retreat For All Seasons



### Caledon

A ski chalet design that will make a fine winter or summer retreat for the family. Choose from 2 plans, varying in size, to meet your needs. There is ample space in the living, kitchen and dining areas to provide for comfortable vacation living.

**\$14,169.00** Erected on  
your foundation

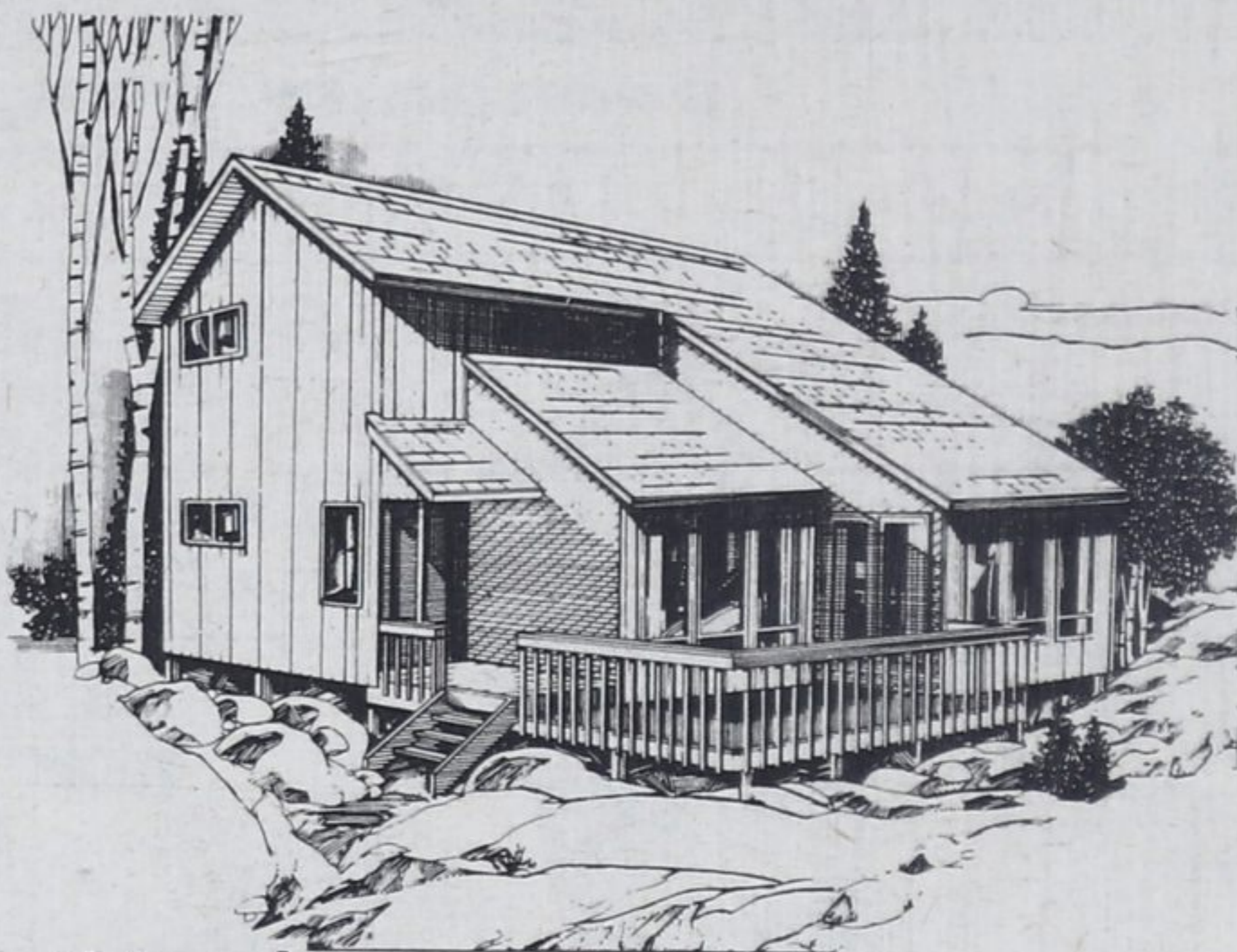


### Brighton

Three exciting plans of chalet styling for year round living and recreational pleasure. Choose from either of the 3 or 4 bedroom designs. Plans 1 and 3 provide open viewing to the living area from the upper bedrooms. A main level sundeck on Plan 1 and a balcony on Plan 3 bring outdoor relaxation even closer. Rake windows in living areas are optional.

**\$20,569.00** Erected on  
your foundation

For further information, see us this Saturday for slide presentations by our home sales representatives and authorized builders.



### Northland

All the comfort and warmth of your vacationing fun, is achieved when owning this smart design. The large upstairs bedroom has plenty of windows to bring in the warmth of the outdoors. The vaulted ceiling over the living room is visible from the upstairs landing. A large front deck for sunbathing or just relaxing, leads into the main living areas.

**\$20,349.00** Erected on  
your foundation



### Cortina

The unique styling of this model will give you the comfort and pleasure on your vacation you've always dreamed of. Two of the three bedrooms has a balcony. This cottage features a vaulted ceiling over the living, dining and kitchen areas. Will allow the warmth of the outdoors to add to your indoor fun.

**\$13,789.00** Erected on  
your foundation

- All prices include erection on your foundation (Give us a month and we will hand you the keys).
- 33 designs to choose from
- All prices include siding, double insul-glazed windows
- Package prices available for the "Do-it-yourselfer".



# BEAVER LUMBER

159 Fourth St., Midland  
**526-5416**

Open 7:30 a.m. to 6:00 p.m., Fridays until 9:00 p.m.