

MIDLAND BUILDALL

invites you to their

OPEN HOUSE CELEBRATION

Friday, April 23, 7 p.m. till 11 p.m.

Come in and see our expanded facilities-over 12,000 sq.ft.

★ *Enjoy FREE refreshments*

★ *Enter our "North to Alaska" Sweepstakes*

Dozens of Door Prizes

Picnic Table, Lawn Chairs, Tool Kits, Power Tools, Panelling, Mirrors, Baseball Tickets, Step Ladders, Paint Sets and many more.

Your personal invitation



Midland Buildall cordially invites you and your family to attend at our open house for the occasion of the

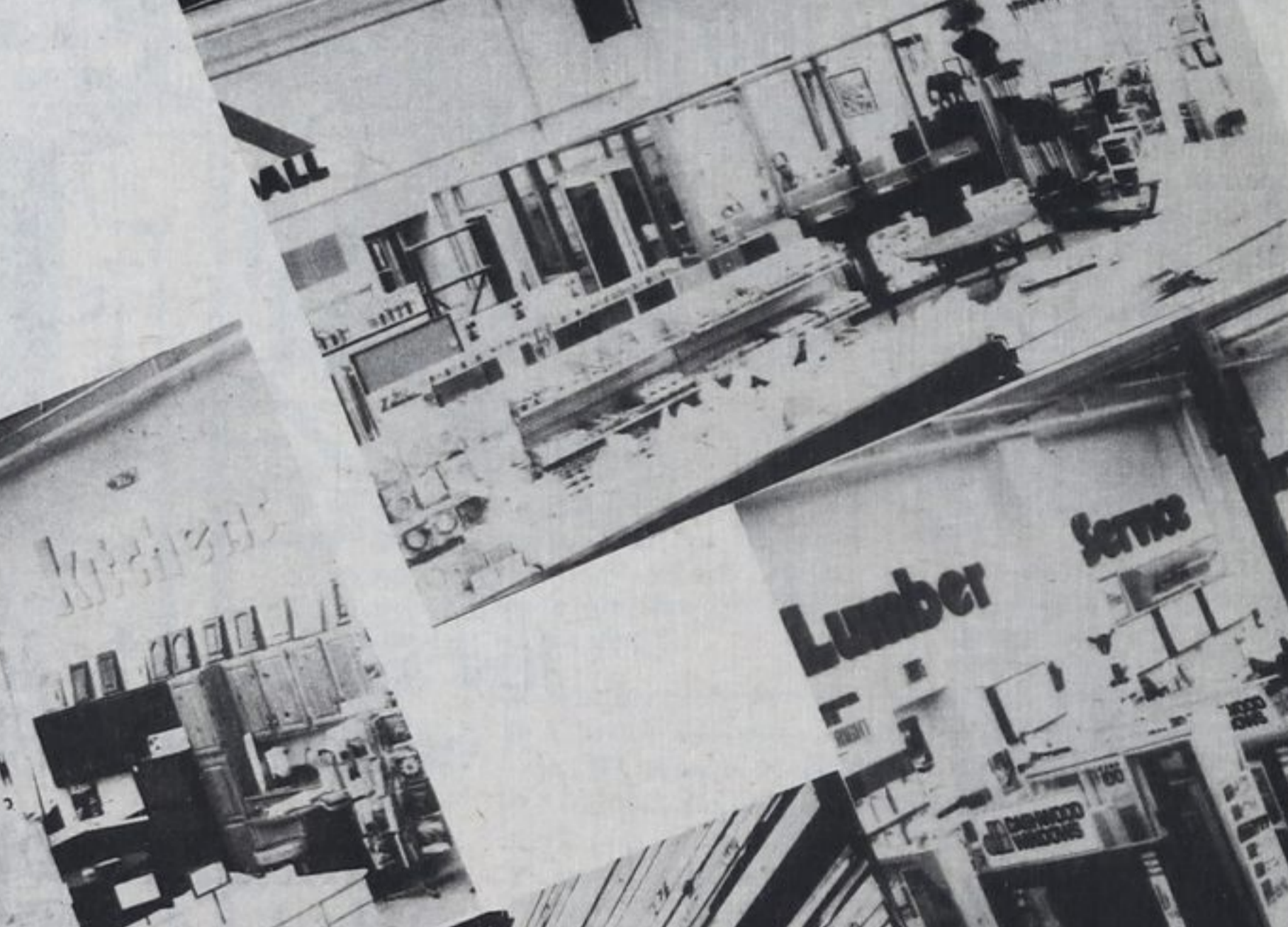
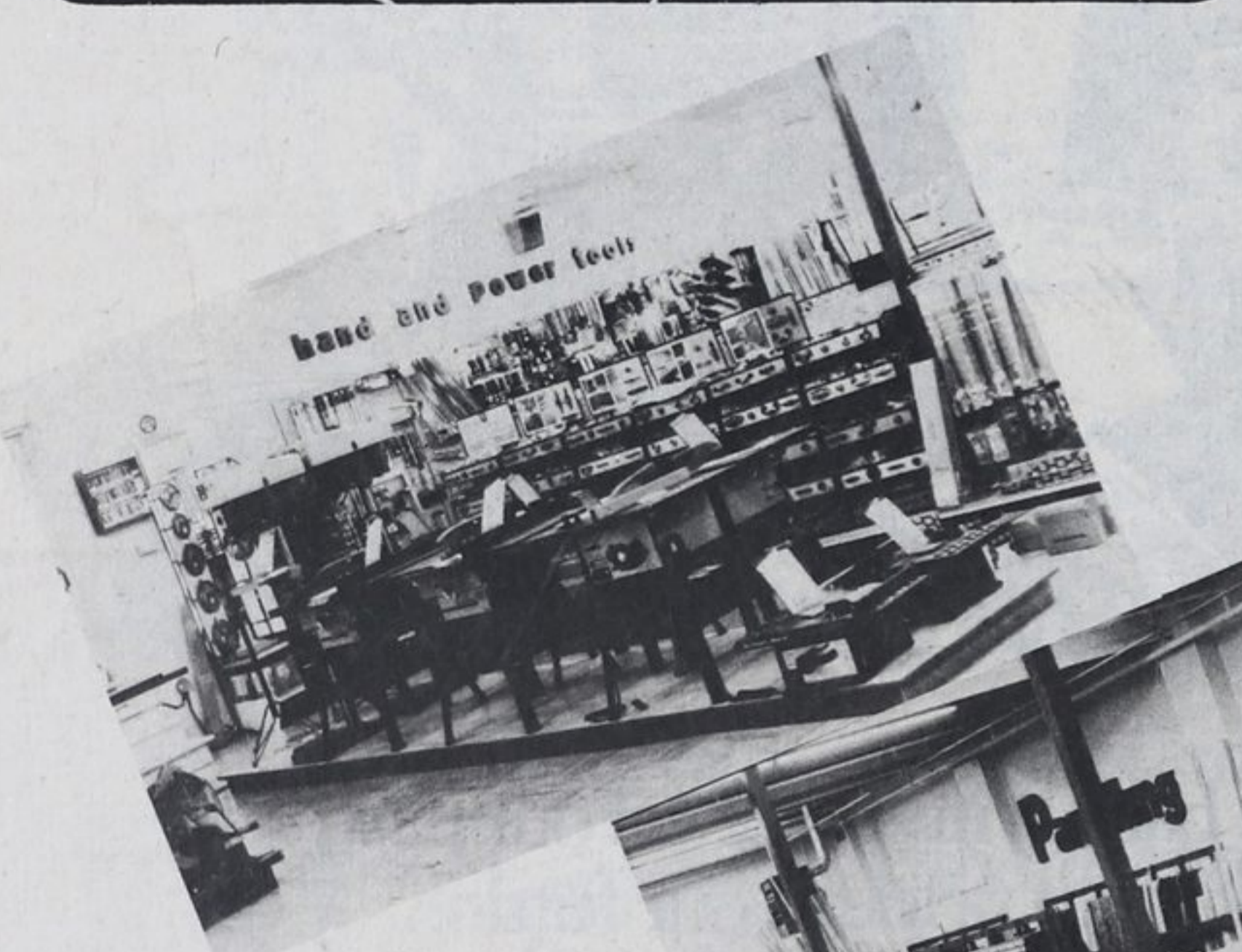
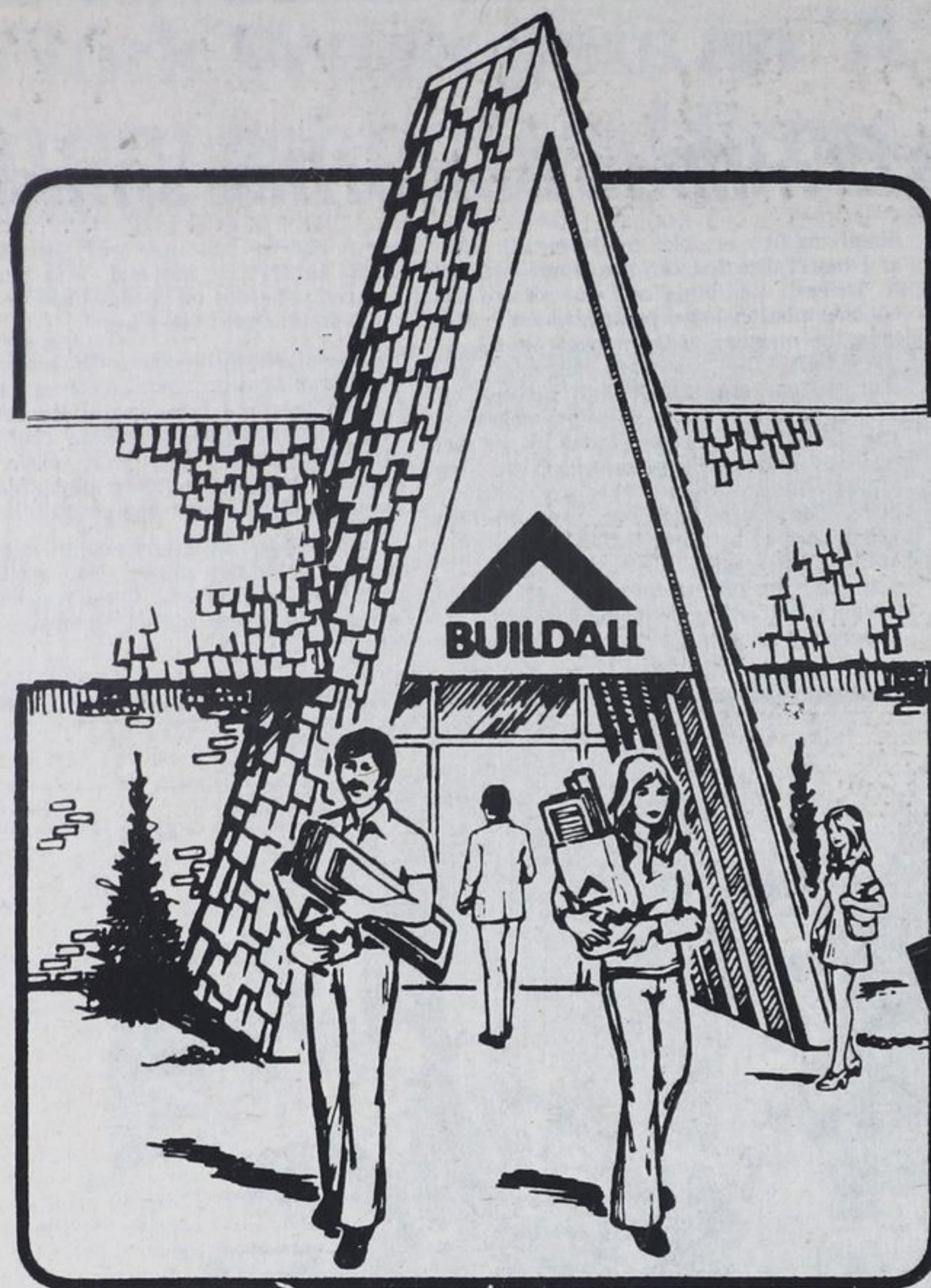
Grand Opening of our expanded facility

Midland Buildall

200 Third Street

Midland, Ontario

Friday, April 23, 1982 7:00 - 11:00 p.m.



"NORTH TO ALASKA" SWEEPSTAKE RULES

HOW TO ENTER:
Entry forms are available at participating Buildall Dealers. No purchase is necessary. Enter as often as you wish. Entries must be submitted before May 29, 1982.

WHAT YOU WIN:
You could be one of 10 lucky winners of a trip for two with CP Air to Vancouver for a spectacular 7-day cruise - North to Alaska, on Westours' luxurious Cunard Princess!

TRIP INCLUDES:

- Air transportation by CP Air from any CP Air gateway city to Vancouver. (Air transportation to gateway city from outlying areas also included.)
- Transfers and baggage handling between airport and pier.
- Deluxe outside twin room accommodation aboard WESTOURS' "Cunard Princess" cruise ship, for 7 nights.
- All meals and entertainment on board ship.
- \$500 in Canadian fund travellers cheques.

PRIZES MUST BE ACCEPTED AS AWARDED SEE STORE DISPLAYS FOR FULL DETAILS

MIDLAND

BUILDALL
ASSOCIATE STORE

Div. of MIDLAND PLANING MILLS LTD.
200 - 3rd St., Midland 526-2264

Use your Visa or Master Card



STORE HOURS:

Mon.-Fri. 8 a.m.-5 p.m. Sat 8 a.m.-3 p.m.

FREE PARKING

