

# Classified

## WANTED TO RENT

Wanted to rent, a small office in Midland / Penetanguishene. Suitable for music studio. Contact Ms. Sullivan 526-3937. 73 to 76

Large house, unfurnished, Midland, Port McNicoll, Victoria Harbour or Penetanguishene. Phone Salvation Army 526-2751. 73-74-75

## FOR RENT

4 bedroom executive house close to Midland. All appliances, carpeted throughout, \$500 monthly plus utilities. References. 534-3544 after 6 p.m. 72 to 75

2 bedroom house, kitchen, 4-piece bath, living-room, dining-room, \$275 monthly plus utilities. Phone 526-7962 anytime. 73

Lower 3 bedroom duplex, \$300 per month plus utilities. Available immediately. First and last month. Call 526-3435. 73

## REAL ESTATE

Wyevale-3 bedroom bungalow, \$45,000 or best offer. V.T.B. mortgage to suit you. Retired. Phone 526-5986, 526-8141. 73

## FOR RENT

Penetanguishene - 3 bedroom house, \$415 per month plus utilities. Call 533-2142. 73-74

## REAL ESTATE

## FOR RENT

3 bedroom home, centrally located, \$325. per month plus utilities. Phone 526-9391. 71TF

## REAL ESTATE

## FOR RENT

3 bedroom house with garage, \$365 per month plus utilities. References. Phone 526-9946. 72-73

## REAL ESTATE

## FOR RENT

3 bedroom house in Midland, \$500 per month. Phone 526-7113 or 533-2140. 72-73

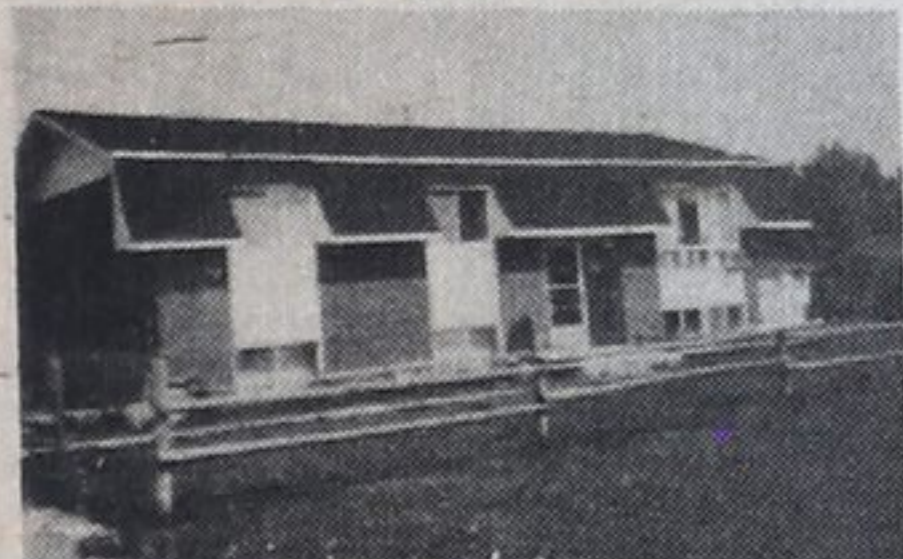
## REAL ESTATE

### BEAT THE HIGH COST OF HOUSING!

Mobile Homes for Sale  
Various models,  
New & Used Units  
from \$13,000. up  
526-4339 526-5227  
SMITH MOBILE HOME PARK 73TF

## OPEN HOUSE

460 Seventh St., Port McNicoll  
Sunday, Sept. 13  
1-4 p.m.



### A PLACE WITH SPACE

Bungalow on large lot in quiet neighbourhood, spacious deck at rear, all brick exterior. Three bedrooms, almost completed recreation room, excellent workshop and a 10 1/4 per cent first mortgage. Asking \$42,000.

**Bryson McQuirter**  
Limited Realtor — Since 1960

**SEVERN SOUND**  
Realty (1980) Ltd.  
REALTOR  
526-2293

## OPEN HOUSE



### 295 Scott Street, Midland

3 bedrooms, 2 baths, modern kitchen, dishwasher, stove and fridge included, 13 1/4 per cent first mortgage, not due till September 1983. Vendor will hold 2nd. Reduced from \$48,900 to \$45,900.

Saturday, Sept. 12 - 11 a.m. to 3 p.m.  
Sunday, Sept. 13 - 11 a.m. to 3 p.m.

72,73

**A. E. LePAGE**

(ONTARIO) LTD. REALTOR

## The name friends recommend COTTAGES



### AT LAST!

A modest priced cottage at Wahnekeewening. The finest sand beach in the area. 3 bd on large wooded lot. Only \$25,900. Clarence Lee. No. 43.

### WATERFRONT-NEAR MIDLAND

\$42,500. 5 bdrm. cottage with good beach. Roads open yr. round, great fishing and boating area. Children bussed to school. Marjorie Contois. No. 39



### WATERFRONT ALL SEASON

Recreation Home. 4 b.r. on 100 ft. lot in very private location. Many extras. Priced to sell at \$79,500. Clarence Lee No. 44

### 101 - NOT DALMATIANS!

101 feet of private waterfront. Well built 3 br. cottage. White frame with cedar deck. Franklin / electric heat. Nancy Cardwell, Mary Thompson. No. 14



### PRIVACY PLUS VIEW

On this large log cottage on 2 acre lot steps to Bluewater Beach. Asking only \$54,900. Will consider all offers. Clarence Lee. No. 45

### \$14,000!! LOT & COTTAGE

Remove the vendor's cottage onto this lot with a terrific view, and it will be 2 thou less! Lot is dotted with trees. Patti Torrance. No. 21



### BEAUTIFUL WATERFRONT BEACH

This 3 bedroom, fully furnished cottage with a wood burning stove features over 100' of waterfront. Very secluded and private. Patti Torrance. No. 22

**A.E. LePage**  
**Highway Mall**

Highway 27

Midland 526-4271  
Coldwater 835-3343  
Elmvalle 322-1381

**MIDLAND OFFICE**  
341 King St.  
526-2293

**SEVERN SOUND**  
Realty (1980) Ltd.  
REALTOR

**PERKINSFIELD OFFICE**  
Cty Rds 6 & 25  
526-7863

Open Monday to Thursday 9-5:30 Friday 9-9 and Saturday 9-5 p.m.

Open Monday to Saturday 9-5 p.m.



**1. STARTER HOME \$24,900.**  
Try \$5,000. down, 3 bedroom, full basement. Vendor will hold 1st mortgage for balance at 15 per cent. Possession October 1st.

**2. 10 1/2 PER CENT FIRST MORTGAGE** 6. WEST SIDE  
Three bedroom home on 4 bedroom family home a quiet street near Little Lake Park, large family house, garage, and room with sliding doors workshop. Only \$39,900. to deck, and back yard with mature trees. Only \$39,900.

**3. BALM BEACH ROAD**  
App. 9 acres with frontage on 3 roads. Zoned Industrial M1, close to town.

**4. 50 ACRES**  
Over 1,700 ft. on County Road 25, partly wooded overlooking Midland and Georgian Bay. Good investment property.

**5. OWNER ANXIOUS**  
Duplex, needs some work, large 3 bedroom apt. plus 1 bedroom apt., full basement, good investment property. Open to offers. \$47,000.

**7. PORT MCNICOLL**  
New Listing, private setting, 4 bedroom bungalow, rec. room with wet bar, two large decks overlooking large lot, much more. Call today. \$54,900.

**8. CLOSE TO TOWN**  
4 bedroom brick sidesplit, 2 car garage with entrance to basement, paved drive, family room with fireplace, sliding doors from kitchen, workshop, 2 bathrooms, 1 acre lot. Call for a viewing.

**9. QUIET STREET**  
2 storey, 2 bedroom, stucco, a good starter home, 13 1/4 per cent mort. good till 1985. Vendor will hold second. \$29,900.

**10. PORT MCNICOLL**  
3 bedroom 1 1/2 storey, new colorlock siding, newly shingled roof, small barn and workshop, large lot. Asking \$32,900.

**11. WEST SIDE DUPLEX**  
3-2 bedroom apts. all with 4 pc. bath, monthly rental of \$800. Owner will hold first mortgage. \$79,500.

**12. WAUBAUSHENE**  
Mary Street, 3 bedroom bungalow, chip plan insulated. Large double lot, a good starter home. \$27,500.

**13. BEAUTIFUL VIEW**  
Of Midland's Little Lake, 2 bedroom cottage, nice lot. Asking \$28,900.

### LOTS

Borden St. 24,500.  
Bourgeois Beach 7,000.  
Conc. 10, Tay 13,500.  
Gordon Drive  
Sandy Bay lots from 15,000. to 17,000.



**14. ARDMORE BEACH - WATERFRONT**  
3 bedroom cottage, soft sandy beach 16' x 8' storage shed, 2 pc bath. Asking \$59,900.

**15. COMMERCIAL LUXURY DUPLEX**  
in Elmvalle, suitable for professional offices, double garage, 2 fireplaces, 3 bedrooms and 2 bedroom apartment. Zoned commercial, residential. \$85,000.

**16. GEORGIAN SANDS SPECIAL**  
Spacious home situated on large picturesque lot. Family kitchen, sep. dining room, lge. living room with fireplace, patio doors to deck. Full basement. Call now. \$59,000.

**17. FLOS TOWNSHIP**  
145 acres, 45 acres bush, balance workable, barn, drive shed and older home.

**18. BALM BEACH**  
2 bedroom cottage, 50 x 124 lot, 100 AMP service, storage shed, \$26,000.

**19. WATERFRONT COTTAGE**  
Fireplace, family room, sandy beach

**20. TINY TOWNSHIP**  
100 acres, large steel barn, 75' driving shed, brick house, owner will hold first mortgage.

**21. WAHNEKEWENING BEACH**  
2 bedroom brick cottage, lot 100' x 150', drilled well, new septic. \$29,900.

### LOTS

**22. CLOSE TO BEACH**  
100 x 150 - \$7,500.  
100 x 150 - \$12,400.  
Community water 90 x 175 - \$16,500.

Jack Swick 526-5603  
Rosemary Withers 526-2484  
Ted Guppy 526-6537  
Anne Butson 526-3363

Agnes Marshall 526-6183  
Pat Jagos 526-8964  
George Marshall 526-6183

After hours please call  
526-6183 Jack Pettigrew  
526-8964 Bonnie Rothwell  
526-6183 Dorelle Pritchard 705-722-3636

Lazelle Lang 361-2482  
Steve Chambers 526-5073  
Barbara McDonald 361-2930  
Philip Goldring 361-1216  
Ron Josland 526-4359

PROVIDING "SOUND" SERVICE