

# Classified

## FARMERSMARKET

U-Pick - sweet peas from July 6. Green and yellow beans, late July and August. Corn August. Roblee Farm 526-5985. 55-56-57

## SERVICES

Spencer Custom-made foundations and bras designed individually for you. Telephone 549-7133. 22TF

## URINE ERASE

Guarantees removal of urine stains and odours from carpets. Free brochure. Reidell Chemicals Ltd., P.O. Box 7500, London, Ontario. 52 to 69

## FOR RENT

Prime highway location store space for rent. Presently used as a top name woodstove store. Can be carried on as same, or used for most anything else. Contact 526-8031 or 1-326-1880. 57,58

## WANTED TO RENT

Why sell your house when you can rent it to a mature couple with one child? We have owned homes previously, and are experienced in taking care of a property. Let us take care of yours for you and protect your most precious investment - your home. We need to rent a three bedroom home in the Midland or Penetang area by the end of August. Please call 526-2958 or 526-4887.

## PETS&LIVESTOCK

1 Dorset Ram, 10 mths. old, dewormed. 533-3096 after 5 p.m. 56-57

Six yr. old part Arabian Gelding - broke to ride - green broke to drive - best offer - Coldwater 686-7482. 56-57

Springer Spaniels, 5 males, \$75 each. Phone 533-2712. 56 to 59

## PETS&LIVESTOCK

Reg'd. Labrador Retriever pups - black-female-hunting companion or pet. \$100-\$200. Coldwater 686-7482. 56-57

## REAL ESTATE

Mobile home 60 x 12, excellent view of bay. Edwards Mobile Estates, adult park. Asking \$19,000. Phone 526-4613. 56 to 59

Secluded all year round vacation property. 550 foot frontage on spring fed lake on approx. 5 1/2 acres. 92 miles from Toronto. Penetang area \$80,000. Call 549-8665 2-6 p.m. 56-57

## REAL ESTATE

Private sale - well decorated 3 bedroom, 2 bathroom, Victoria Harbour home on nicely landscaped double lot. Approx. \$10,000 down, to \$25,000 mtge at 13 1/2 per cent. 534-4139. 55-56-57

Port McNicoll-house for sale on large corner lot. Phone 526-6148, 526-9270, 534-7773 after 5. 57,58

Open House Sat., July 18, at 336 Manly St., Midland, 1 to 4 p.m. Our Century 21Ports of Huron sales associate will show you the many features of this 4 bedroom home. 57

## MORTGAGES

Do you have a mortgage to sell? Call Jerry Rose 737-4277, Barrie. Best prices available. 51TF

## OPEN HOUSE

633 Bayview Drive, Midland Sat., July 18 -

1-4:00 p.m.



### YOU'RE INVITED

To preview this immaculate 4 bedroom home with many extra features. You've heard so much about him, now's your chance to meet Helmut Bosch.

57



**Bryson McQuirter**

Limited Realtor - Since 1960

526-9391

## A. E. LePAGE

(ONTARIO) LTD. REALTOR

## The name friends recommend



### NEW HOME ARDMORE BEACH

Electric heat plus fireplace. On treed lot, 1600 sq. ft. plus basement. Listed at \$53,900. Illness forces sale, all offers considered. Clarence Lee. No. 15.



### LOW DOWN PAYMENT \$35,900.

Why rent when you can own this 3 bdrm backsplitted home for \$300 a month. Has sliding glass doors to deck and hedged yard. Paul Sauve. No. 25.



### \$38,000 BALM BEACH INCOME

There is great demand to rent this winterized cottage with large garage on 52 x 216 ft. lot minutes to sandy beach and entertainment. Mary Thompson. No. 36.



### JUST REDUCED! \$17,500

Imagine yourself in this home with your own renovations and remodelling ideas. Two storey, 3 bedroom, 3 pce bath, Vic. Harbour. Patti Torrance. No. 41.



### OWNER SAYS SELL!!

3 bdrm brick bungalow in Brule Heights. Fireplace in living room. Franklin in basement, sundeck, nice lot. Try an offer. Paul Sauve. No. 26.



### \$37,500. GEORGIAN SANDS

Bright 2 bdrm cottage with full bsmt minutes to safe sandy beach. Great start to relaxing vacations. Mary Thompson. No. 37.



### LOTS OF REUSEABLE LUMBER!!

\$12,500 for this huge 66'x165' lot in Vict. Har. Reuse the existing lumber to recreate your own home or cottage. Patti Torrance. No. 42.



### BEAUTIFUL BLUEWATER

Modest priced cottage on half acre lot with great view. Asking only \$31,900. Clarence Lee. No. 10.



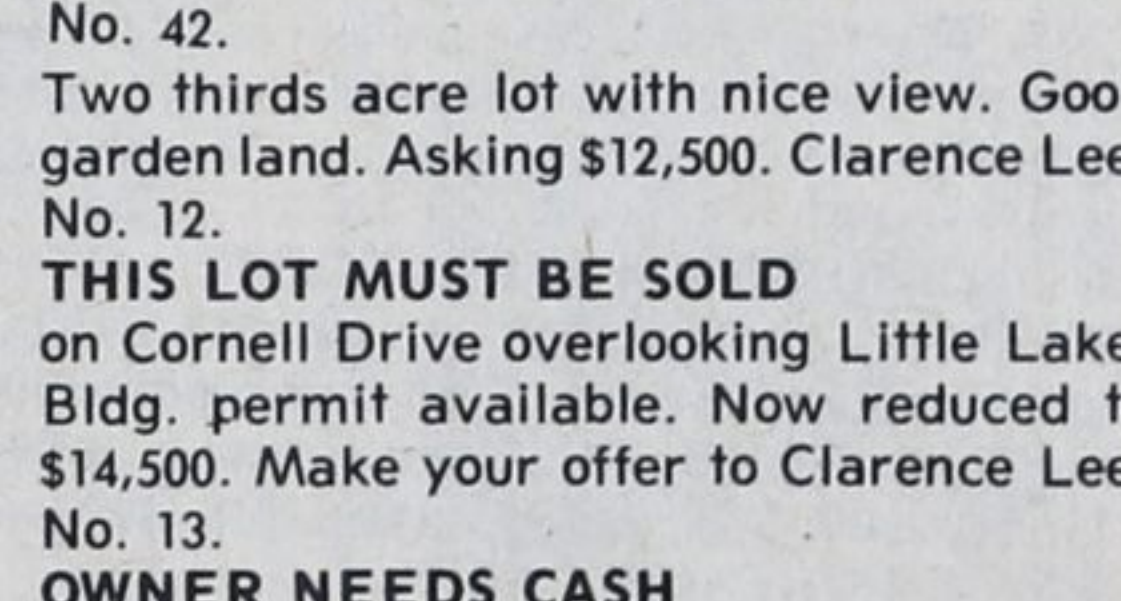
### FURNISHED COTTAGE

\$35,800. 5 bedrooms, 9 yr. old, close to safe, sandy beach, a place to relax or convert to year round living. Bob Sweezy. No. 56.



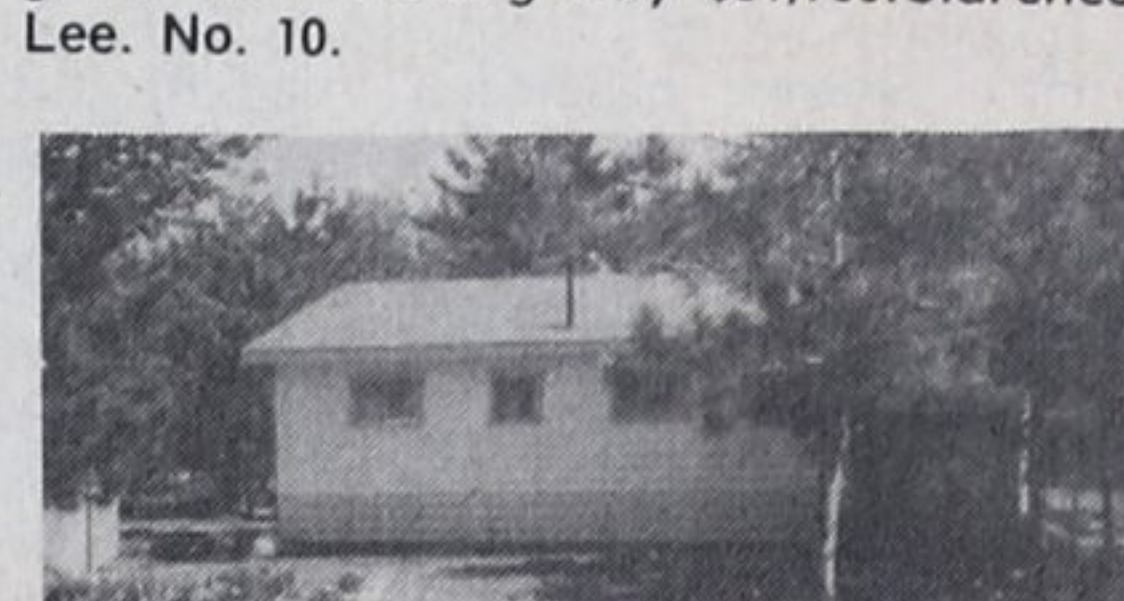
### SOMETHING EXCEPTIONAL

\$84,900. An old farmhouse restored to its original quality, plus all modern conveniences. 4 1/2 acres, located on major road. Bob Sweezy. No. 55.



### THIS LOT MUST BE SOLD

on Cornell Drive overlooking Little Lake. Bldg. permit available. Now reduced to \$14,500. Make your offer to Clarence Lee. No. 13.



### YEAR ROUND VACATION HOME

On large wooded lot at Ishpeming Beach. 4 pce bath, garage, 3 bdrms all for \$34,900. Clarence Lee. No. 11.

### CHOICE WATERFRONT COTTAGES

3 bedroom and 4 bedroom terrific lot. Only \$54,900. Jack Scott. No. 31.

### BEACH FRONT COTTAGE

3 bedrooms, living room with open fireplace. Superb location. \$49,900. Jack Scott. No. 32.

### COZY 3 BDRM BUNGALOW

White brick year round home, close to water. \$39,900. Jack Scott. No. 33.

### \$69,900 GEO. BAY WATERFRONT

3 bdrm cottage/home offers Franklin, fridge, stove, dishwasher, wrap-around cedar deck. 100' frontage, views Giant's Tomb Island and exciting sunsets. Mary Thompson and Nancy Cardwell. No. 35.

### HOBBY FARM \$32,900.

1 1/2 storey stucco home on 3 1/2 acres in the Rolling Hills of Medonte. Features barn, implement shed and a great view. Paul Sauve. No. 24.

### 149,000 MIDLAND AREA

Grocery and gas bar. Gross over \$275,000, 2 bay garage, 3 bdrm living quarters over store, modern block buildings, paved lot. Main hwy. location. Frank Wristen. No. 47.

### WATERFRONT PARK LOT

\$34,500. 3 bdrm cedar plank lined, alum. exterior, could be year round vacation home, backs on waterfront park just steps to bay. Owner will hold mortgage. Frank Wristen. No. 48.

### CLOSE TO WORK

\$15,500 2 bdrm single modular. Minutes to RCA, KIL, Leitch, Greening-Donald. Come home to quiet country living. Nancy Cardwell. No. 63.

### WATERFRONT HOME

\$69,900 Fully furnished 3 bdrm, comb. liv./din., Franklin, supp. electric heat, 100 feet waterfront. Nancy Cardwell/Mary Thompson. No. 64.

## A.E. LePage Highway Mall

Highway 27 Midland 526-4271

Elmvale 322-1381

Coldwater 835-3343