

Classified

Classified Word Advertising Rates	
Up to 18 words	
First insertion	3.20
Second insertion	3.00
Third insertion	2.90
Subsequent insertions	ea. 2.90
Additional words	.11

BOATS & MOTORS

16' Doral boat, 75 Johnson motor, trailer, reasonable. Call 533-2050. 45-46-47

20 ft. Lapstrake Grew with 4 cyl. Volvo engine and outdrive. Eng. in gd. cond., boat as is or repaired. Best offer. 549-2861. 46-47

16 ft. cutter deep V, 140 hp Merc i/o, \$4,495. 18 ft. Bowrider, 120 hp i/o, \$4,995. 17 ft. Starcraft, full top, built-in tank, bilage pump, 1980, \$2,995. Cove Marina, Dault's Bay, Balm Beach Road, 361-1212, 526-5073. 47-48-49

28 foot inboard GM-Marine engine with automatic trans. Hull in good condition. Located Beechwood Island. Phone 526-2592 or 526-5463. Weekend call 538-2087. F47-F49

15 ft Cedarstrip with 50 hp Johnson Motor & trailer \$750.00., 549-2497, 266 Church St., Penetang. 47

LAWN SALES

Saturday, June 13, at 317 Eighth St., Midland, 9 a.m. 47

Garage sale, Saturday, June 13, 10 a.m. at 985 Hugel Ave., Midland. 47

REAL ESTATE

LAWN SALES

Garage sale-Mitchell's Beach Road, Victoria Harbour, Saturday, June 20, starting 1 p.m. 47

Lawn sale Waubaushene, corner Mary and John Streets, Saturday, June 13 and Sunday, June 14 from noon to 6 p.m. Signs posted. 47

Yard sale - Sat., June 13, 10 a.m. Base Line Rd. towards Airport just past dump road. If rain, will be held Sunday. 46-47

Garage sale - usual assortment, plus wooden crafts, plants, shrubs. Fri. and Sat., June 12, 13 from 12 p.m. Dyer's, Triple Bay Rd., Port McNicoll. 46-47

Moving sale - Sat., June 13, 9-3 at 320 Second St., Midland. Furn., books and many misc. items. 46-47

REAL ESTATE

DO YOU HAVE A MORTGAGE YOU WANT TO SELL?

We buy and arrange mortgages. For further information call: 526-2286

or drop into our office:

AVCO FINANCIAL SERVICES REALTY LTD. 279 King St., Midland

46 to 51

FOR SALE

Wedding dress, matching Juliette cap and veil, size 12. Call 526-9102, 5-8 p.m. 46-47

Canadian Crafts & Grass Roots "Up To 50 Per Cent Off" sale on the lawn in Wyebridge June 13, 14 45-46-47

1969 Nimrod hard top camper sleeps 5. Call 526-3126 45-46-47

Hardtop camper trailer, sleeps 6, table, cupboard and propane heater, \$450. Call 526-6596. 47

70 commercial Suffolk ewes. Call 322-2398. 47-48

FOR SALE

Baby furn., carriage, chg. table, hi-boy dresser. All are excellent. 549-8108. 46-47

Boxed Plants - flowers and vegetables, hanging baskets, potted plants. Webb's Greenhouse, 1/2 mile west of Wyevale on 5th Concession, 322-1018. 39 to 50

FOR SALE

1979 Shamrock trailer, 35 ft., 2 bdrms., i.r., kitchen, stove, fridge, 4 pc. bath, deluxe stereo and cassette, patio drs., 18 ft. roll-out canopy, 2 popouts on trailer, \$13,500 or best offer. 549-2662. 46-47-48

2-furrow plow. Phone 549-8996. 46-47

ML POOLS & SPAS MAUR-LAC LTD.

SWIMMING POOLS, SPAS, HOT TUBS We service and carry pool chemicals for your complete pool project and continued pool maintenance.

CALL JOHN LACKIE

549-8564 322-1674 46,47

MOTORCYCLES

1980 Kawasaki 440 LTD. 549-8098. 46-47

Harley Davidson 250 street and trail 1975. Gd. Condition. Phone 534-3503. 44 to 47

LOST & FOUND

Kitten - 6 wks. old lost at Dock Lunch, Fri. 5, 1981. Markings are grey and black with white under belly and paws. Call 526-8987. Reward. 46-47

PERSONAL

For Fashion Two Twenty Cosmetics

Call Joyce Tennant 526-4090 27TF

SERVICES

Spencer Custom-made foundations and bras designed individually for you. Telephone 549-7133. 22TF

PETS & LIVESTOCK

Toy poodles for sale, pups and adults, silver and apricot, \$100 to \$150. Call 526-3937. F47-F49

WANTED TO RENT

Wanted, 3 bdrm., waterfront cottage for August. Responsible family. Phone Dan 549-8612. 46 to 49

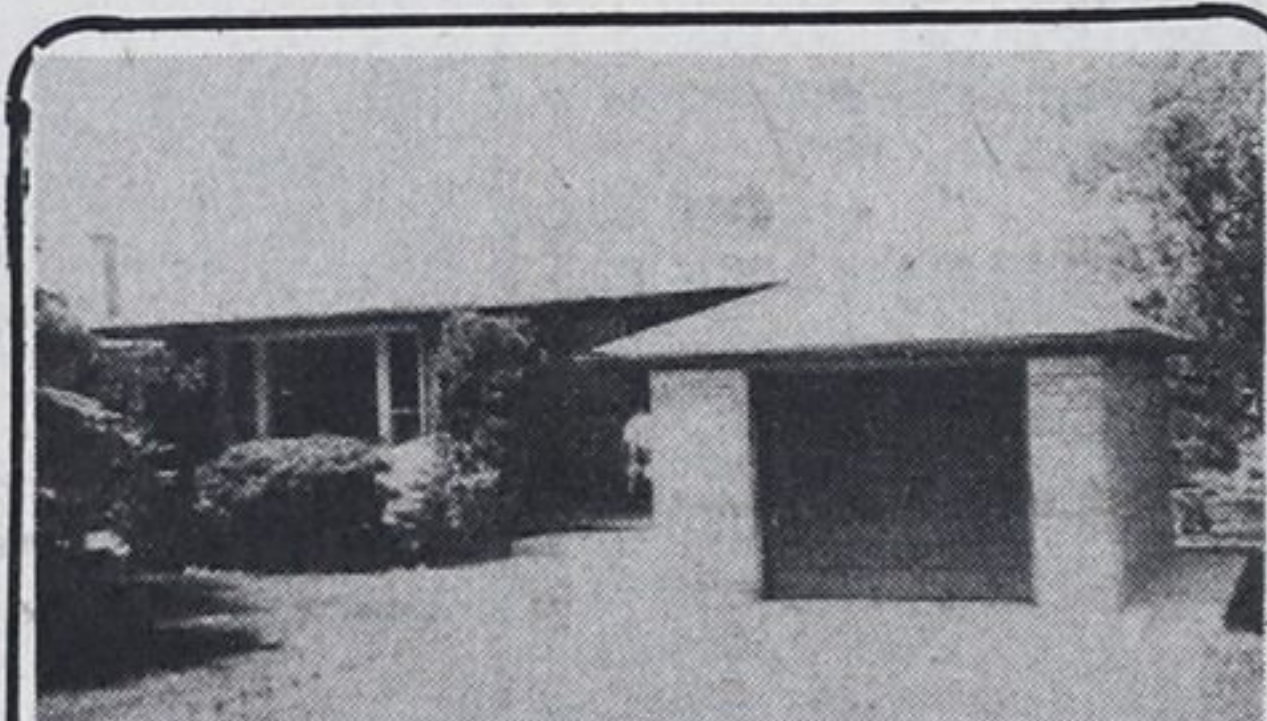
FOR RENT

Snack bar for rent in Wyevale, all equipped. For more information call 322-2182. 47-48

MIDLAND OFFICE
341 King St.
526-2293



PERKINSFIELD OFFICE
Cty Rds 6 & 25
526-7863



1. REDUCED TO \$50,500.
3 bedroom bungalow on large lot. Lots of room for a pool. Finished basement. 10 1/4 mortgage. Don't miss this opportunity.

2. PORTAGE PARK
Lovely 4 bedroom executive home. Extra spacious kitchen with dishwasher and eating area. Family rm with fireplace and sliding doors to sundeck and swimming pool. Many extras. See this one today.

7.12 PERCENT MORTGAGE
Three bdrm. bungalow on good lot in Midland. Reduced \$34,950.

8. FREDERICK STREET
Excellent 5 bdrm. home, owner transferred. 1 1/2 baths. Many extras. Must be seen. \$47,900. Try an offer. 504/81

3. 87 FT. WATERFRONT
On Georgian Bay. Winterized brick bungalow, large living room with fireplace, new modern kitchen, walk to shopping and post office. \$64,900.

9. MIDLAND POINT
2 bdrm. furnished cottage, acorn fireplace, 3 pc. bath, sundeck, excellent lot, close to bay. Full price \$22,500. Terms.

4. VIEW OF BAY
Duplex showing good income. Could easily be converted to single family dwelling. Try an offer, asking \$31,900.

10. RETIREMENT BUNGALOW
2 bedroom home close to downtown, full bsmt. attached garage, new broadloom. Asking \$3,900

5. WINTERIZED 2 BEDROOM BUNGALOW
Large lot, close to waterfront. Immaculate condition. Only \$26,900.

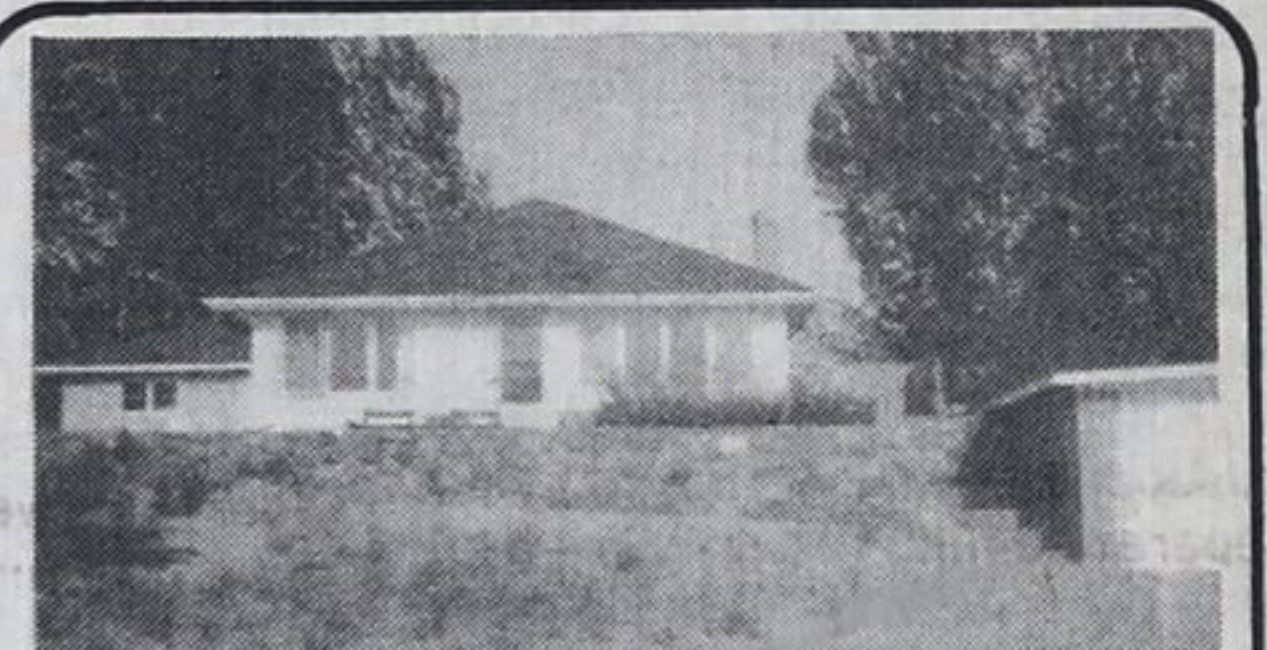
11. ONE OF MIDLAND'S FINEST
Income homes. Close to main street, zoned commercial. 3 large apartments.

12. MORTGAGE
till Oct. / 84 Duplex - 2-2 bdrm. rec. rm. new brdlm. 2-4 pc. baths. \$49,900.

13. 13 1/4 PERCENT MORTGAGE DUE 1985
3 bdrm. home, built-in dishwasher, 1 1/2 baths, main floor laundry, low down payment to one mortgage at only \$34,000.

14. LITTLE LAKE
2 bedroom cottage, large lot with lovely view, town water and septic. \$22,900.

15. SIXTH STREET
Beautiful raised bungalow, 4 bdrms, fireplace in family rm. This one is a beauty. Reduced to \$52,900. Call today.



16. YEAR ROUND WATERFRONT
100' sandy beach. 1 1/2 baths, stone fireplace in spacious living room, dishwasher and appliances. Immaculate throughout, nicely landscaped. \$150,000.



17. TEE PEE POINT
Permanent home or cottage, 5 min. to beach, 4 bedrooms, large lot. Fantastic mortgaging at 14 1/2 per cent not due till 1985, \$36,900. Now's the time to buy and live cheaper than rent.

21. CLOSE TO MIDLAND
8 waterfront winterized rental units plus 3 bedroom living quarters. All units have baths. Furnished.

22. COMMERCIAL LUXURY DUPLEX
in Elmvale, suitable for professional offices, double garage, 2 fireplaces, 3 bedrooms and 2 bedroom apartment. Zoned commercial, residential. \$85,000.

23. A HOME ON THE HIGHWAY
Located 2 miles south of Elmvale on Highway 27, this 2 storey, 3 bedroom house has a large lot. Good location for a tradesman. \$42,900.

18. CLOSE TO BEACH
Lot 144.2x150 with mature trees on a secluded street. \$13,500.

19. TINY TOWNSHIP
100 acres, large steel barn, 75' driving shed, brick house, owner will hold first mortgage.

20. SUMMER BUSINESS
Plus 2-3 bedroom winterized apartments. Take out restaurant plus pin bal and game machines. New drilled well and aquarobic. Call for further details.

VACANT PROPERTY
Geo. Sands 100x150 \$12,400
Farlane Lake-lots 100x150 \$7,500 each.
100 acres-mostly hardwood bush in Flos Twp. Large treed lot-Balm Beach \$13,500.
Conc. 13-good size lot close to Bay. \$16,900.



BERNIE DESROCHES
Bryson McQuirter Ltd. Realtor is pleased to announce the appointment of Bernie Desroches as a sales representative in our Midland office.

Bernie recently completed his real estate licensing course at Georgian College and is a long time resident of Midland.

He is bilingual and a member of the executive of the Richelleu Club.

Bernie is a graduate of Ryerson Polytechnical Institute and has a great deal of experience in both the manufacturing and service industries. His wife Bryde is a registered nurse and they have 2 children in elementary school.

We believe that Bernie is a welcome addition to our office and profession and invite you to discuss your real estate needs with him by calling our office, 526-9391 or his residence after hours, 526-5763.



JUNE TRUSTY
Bryson McQuirter Ltd. Realtor is pleased to announce the appointment of June Trusty as a sales representative in our Midland office.

A recent graduate of the real estate licensing course at Georgian College, June is a native of Midland, returning to her hometown approximately one year ago.

June has an impressive background in the communication field, serving in such capacities as an editor, writer, researcher and administrator.

We are very pleased that June has chosen our organization in which to continue her business career. Her many talents combined with a friendly and sincere personality make her a welcome addition to our sales staff. Please phone June at our Midland office 526-9391 or at her residence 526-6701.

OUR PHILOSOPHY
"TOTAL PROFESSIONALISM TO COMMUNITY AND CLIENTS"



47.

48.

After hours please call			
George Marshall	526-6183	Ted Guppy	526-6537
Jack Pettigrew	526-7353	Anne Butson	526-3363
Bonnie Rothwell	526-8233	Ron Josland	526-4359
Jack Swick	526-5603	Agnes Marshall	526-6183
Rosemary Withers	526-2484	Pat Jagos	526-8964

Open Monday to Thursday 9-5:30 Friday 9-9 and Saturday 9-5 p.m.

After hours please call	
Ted Guppy	526-6537
Barbara McDonald	361-2930
Lazelle Lang	361-2482
Steve Chambers	526-5073
Rosemary Withers	526-2484

Open Monday to Saturday 9-5 p.m. 47. 48.