

### SERVICES

Birthright - Are you pregnant and distressed. Birthright really cares. Call 737-3550. 166 Bayfield St., Barrie, Ontario.

W89TF

S & S Janitorial Service - comm. cleaning. RR 1, Wyebridge, L0K 2E0. Phone 322-1140.

42,43,44

Spencer Custom-made foundations and bras designed individually for you. Telephone 549-7133.

22TF

When the time comes in your family



There is one man you should see and rely upon, the man in your community allowed to sell the most respected name in monuments, the world over...



### SANDERSON

Michael J. Stone  
322-2732  
Elmvale  
Julien Beausoleil  
84 Poyntz St.  
Penetanguishene  
Frank Doherty  
District Sales Manager  
526-2924  
Midland

W9TF

### WANTED TO RENT

Gentleman (retired). Lifetime income. Urgently requires self-contained 1 bdrm. furnished apt. Penetang or Midland in \$250 range. 549-3206.

40,41,42,43

Garage, Midland-Penetang vicinity. Phone 526-8138 after 5:30 p.m.

41-42

### FOR RENT

In Elmvale, quiet 2 bedroom apartment for rent. Close to shopping. Phone 737-2695.

36WTF

One and two bedroom apartments for rent. Call W. C. Player Real Estate Broker - 322-1991.

W24TF

Bachelor apt. Frig & stove, utilities incl. Priv. entrance. Parking. \$180. per mth. 526-6394 after 5:30 p.m.

42

Two bdrm. apt. in farmhouse, stove and garden area, no dogs, references. Please call 322-2130 after 10:00 p.m.

42,44

### REAL ESTATE

Private Sale, 1/2 acre on Wye River, Amelia St., Elmvale, large trees. Call 322-3033.

42

Wyevale-3 bdrm. house. Broadloom, 6 yrs., asking \$45,900. Hold first mortgage, suitable terms. Immediate possession. Private. 526-5986.

42

For sale-frame garage 24' x 14' in Elmvale, to be removed from property. All offers considered up to May 31, 1981. Contact Glenn Burnett at Elmvale IGA or phone 322-3173 after 6:00 p.m.

42,43

# A. E. LePAGE

(ONTARIO) LTD. • REALTOR

## The name friends recommend

### Elmvale Office 322-1381



#### ASSUMABLE 10 1/2 PER CENT MORTGAGE

\$34,900. Cute three bdrm., bungalow, in Elmvale, built-in dishwasher, recreation room, short walk to all conveniences. Carl Davis. No. 15.



#### WYEBRIDGE BUNGALOW

\$54,900. 3 bdrm., bungalow on large lot. Finished basement with walk-out. Large insulated workshop. Hwy. location. Harry Hunt. No. 21.



#### PRIME INCOME PROPERTY

\$145,000. Rental cabins, and a two bedroom residence, gift store, 220 ft. on the Notawasaga River-Wasaga Beach. Carl Davis. No. 17.

#### 90 ACRES

\$73,900. All workable highly productive land, near Waverley. A good investment for a farmer expanding. Harry Hunt. No. 23.

#### WASAGA BEACH-STAYNER

\$10,500. Year round 12'x60' mobile home, at Hometown Park, park facilities include tennis courts, shuffle board. Carl Davis. No. 16.

#### SMALL HOME OR COTTAGE

\$26,900. One bedroom, gas furnace, combination living-dining room and kitchen, fronts year round road at Orr Lake. Gord Touet. No. 1.

#### QUIET STREET IN HILLSDALE

\$49,900. Attached garage and full basement, brick fireplace, eat-in kitchen and 3 bedrooms, brick exterior. Gord Touet. No. 2.

#### DEAD END ROAD AT ORR LAKE

\$42,900. 1,100 square foot modular home at Orr Lake, full basement, 3 bedrooms, finished rec room with woodstove. Gord Touet. No. 3.

#### WASAGA A FRAME

\$29,500. Winterized, electric heated. Large treed lot, cottage for summer, ski chalet for winter. \$5,000 down. Harry Hunt. No. 24.

#### YEAR ROUND-RETREAT

\$65,000 Immaculate, three bdrm., brick bungalow, Bluewater Bch. Brick fireplace, bdrm., full basement, corner lot. Carl Davis. No. 9.

#### OSSOSSANE BEACH

\$19,900. Compact three room cottage with guest cabin, modern sewage system, close to safe sand beach. See it now. Carl Davis. No. 10.

#### ELMVALE AREA-TINY TWP.

\$116,000. Brick, two storey, needing repairs, large bank barn, sheds, on 100 acres of mostly workable land. Carl Davis. No. 11.

#### WOODLAND BEACH / CENTRAL

\$46,700. Immaculate, 3 bdrm., cottage/home, cedar cove siding, drive through garage, and a well manicured grounds. Carl Davis. No. 14.



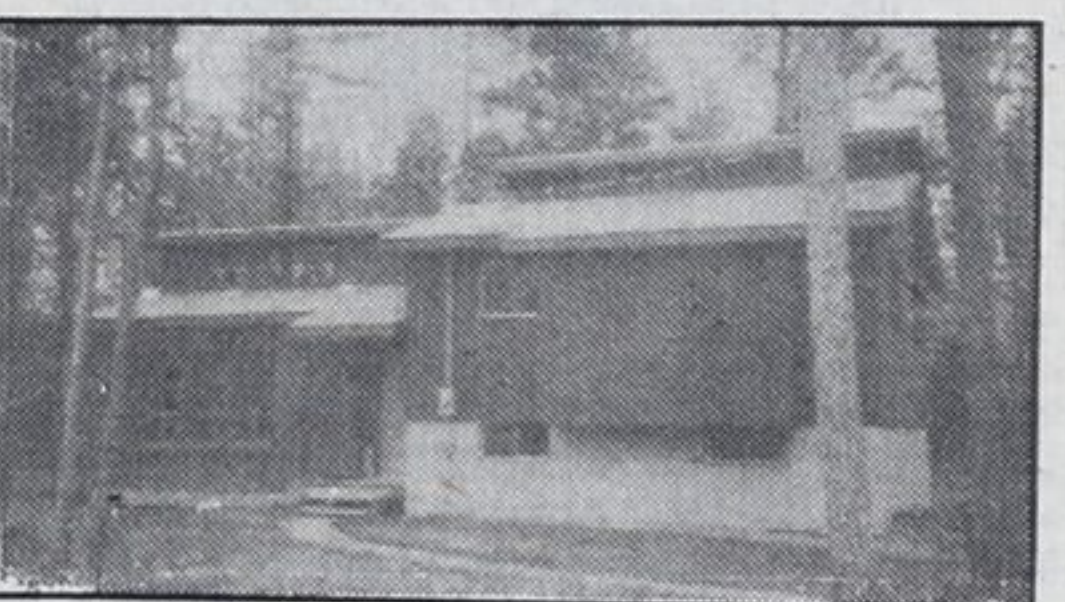
#### HILLSDALE-S OF MIDLAND

\$34,500. Spacious 1 1/2 storey home, franklin fireplace, hardwood floors, some finishing to be done. Only \$5,000 down. Carl Davis. No. 13.



#### MEDONTE 50 ACRES

\$112,000. Beautiful view overlooking Orr Lake. Solid 2 storey brick house with modern addition. Excellent land. Harry Hunt. No. 22.



#### GEORGIAN BAY / BLUEWATER BCH

\$53,900. Enjoy the pure air surrounding this 3 bdrm., split level retreat/home, fireplace, quality homes in area. Carl Davis. No. 18.

#### FIVE ACRES AND CREEK

\$31,000. Three bedroom home just two miles from Elmvale, electric heat, basement, needs handyman to finish. Gord Touet. No. 5.

#### SIX PLEX APARTMENT ELMVALE

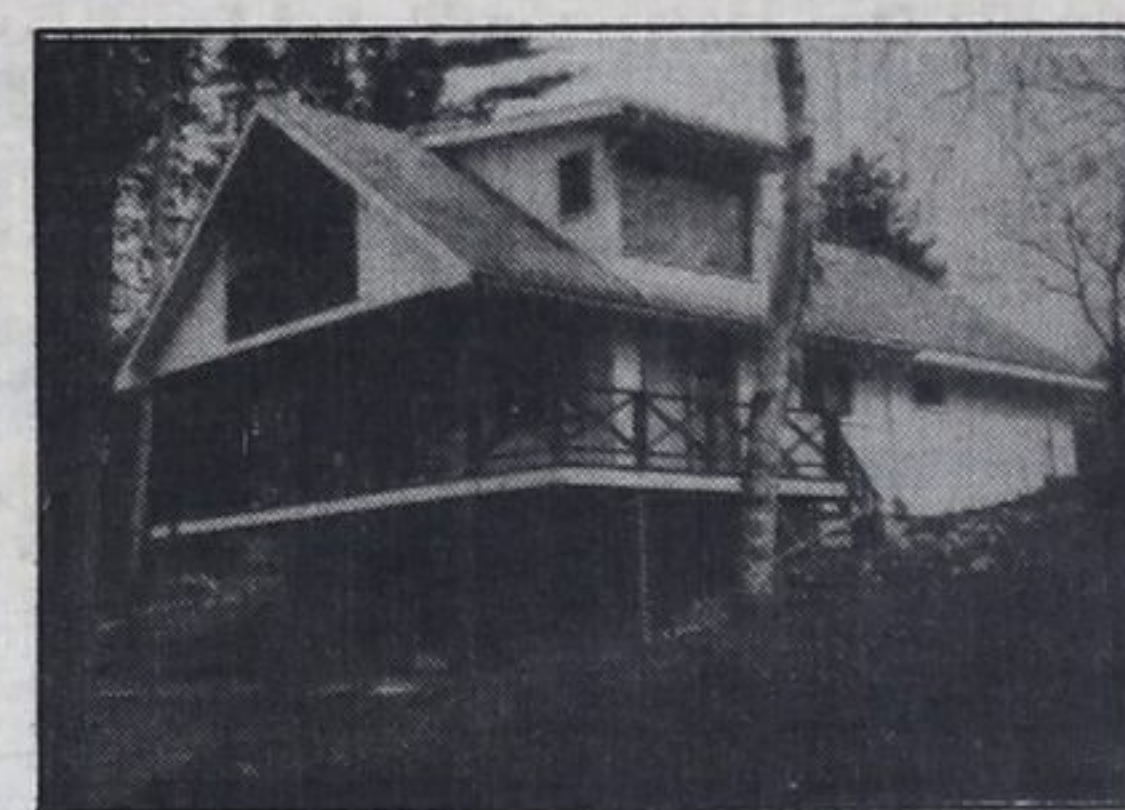
\$120,000. Low down payment and 14 per cent mortgage, paved parking, choice central location, brick exterior, fully rented. Gord Touet. No. 6.

#### BEAUTIFUL SANDY BEACH AREA

\$45,000. Live year round in this recreation area, just steps to sandy shore and 6 miles to ski slopes, 4 bdrms. Gord Touet. No. 7.

#### BERTRAM CRESCENT ELMVALE

\$52,900. New home to be built, 1,000 square feet, carport, come in and view our plans, order now, pick your colours. Gord Touet. No. 8.



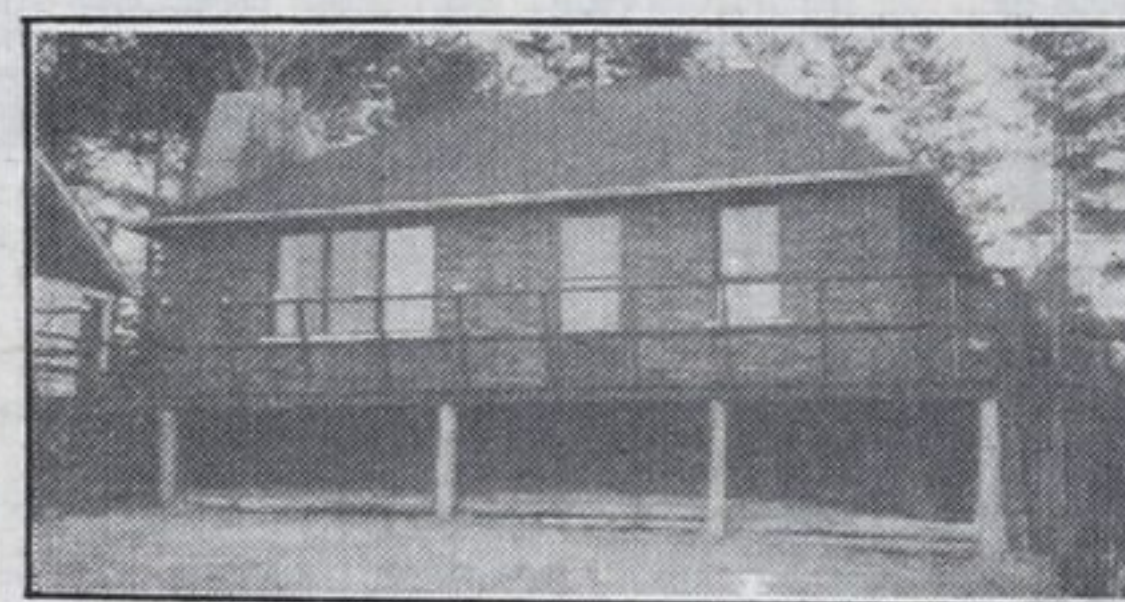
#### ALL SEASONS-WOODLAND BCH

\$79,900 Four bdrm., three level, retreat, sauna, fireplace, bdrm., deck, view of bay, short walk to sand beach. Carl Davis. No. 20.



#### NEW WASAGA-MONEYMAKER

\$27,900. Insulated 3 bdrm. cottage with sundeck. Rents for 250./wk. for summer months. Short walk to safe sand beach. Carl Davis. No. 12.



#### RIVERFRONT-WASAGA BEACH

\$68,900. Appealing 2 bdrm., brick retreat, massive fireplace, family room, bar, deck, garage and boat dock. Terms. Carl Davis. No. 19.

#### COMFORTABLE STARTER HOME

\$27,900. Oil furnace, large eat-in kitchen, living room with nice hardwood floors, 3 bedrooms and large lot. Gord Touet, No. 4.

#### 48 ACRES

\$49,900. One mile off 27 hwy. includes barn and strong Trout stream. Excellent market gardening potential. Harry Hunt. No. 25.

#### 100 ACRE FARM

\$135,000. 50 acres on each side of road. Good house and barn. Artesian wells for future ponds. Scenic and private. Harry Hunt. No. 26.

#### WYEVILLE SUBDIVISION

\$160,000. 24 registered approved lots. Additional acreage included. A good buy for future development. Good financing. Harry Hunt. No. 27.

### Sales staff

Nancy Trowell	636-7957	Carl Davis	322-2962
Dave Bridgeman	549-3693	Laurie Gendron	756-2475
Howard Heacock	322-1753	Clarence Lee	361-2599
Bob Sweezy	526-3985	Becky Marchildon	526-3980
Paul Sauve	549-8174	Barbara Giles	538-1028
Mary Thompson	533-3246	Elmer Strongitharm	686-7960
Gord Touet	322-2245	Gary Pike	549-7696
Paul Vollick	756-2731	Bonnie O'Rourke	526-8413
Frank Wristen	534-3998	Nancy Cardwell	526-9791
Jack Scott	361-2409	Marjorie Contois	534-3634
Harry Hunt	322-1998	Larry Gedge	526-2388
Vince Evenden	526-4032	Margot M. Finan	686-7960
Patti Torrance	549-7037	Steve France	526-7686
		Don Tannahill	534-3106

## A.E. LePage Highway Mall

Highway 27 Midland **526-4271**

Elmvale **322-1381**

Coldwater **835-3343**