

## The name friends recommend



### PENETANG - MAIN ST. COMMERCIAL

\$92,000. Beautifully located building with living quarters attached. Commercial outlet is approx. 1,000 sq. ft. Living area has 3 bdrms., lge. eat-in kitchen, 4 pc. bath, paved parking lot. Gary Pike. No. 64.

**2 STOREY DUPLEX \$37,900**  
2 bdrm. & 1 bdrm. apts. Both rented - Recently decorated. Jack Scott. No. 44.



### CHRISTIAN ISLAND WATERFRONT

\$18,000 buys this furnished 3 bdrm. waterfront chalet. Beautiful clear water offers great summer fun. Paul Sauve. No. 1.



### THREE BEDROOMS TO RENOVATE

\$18,900 will buy this home in Victoria Harbour. Situated on a large lot, renovations could turn this home into an investment. Patti Torrance. No. 59.



### THREE BEDROOM HOME MIDLAND

\$47,500 will buy this older home in Midland. Very close to the downtown core, large garage, well kept home. See it now! Patti Torrance. No. 60.



### EXCEPTIONAL VALUE

\$34,875. Perfect condition, attractive 3 bdrm. home. Garage, paved drive. Quiet area near Georgian Bay. Bob Sweezy. No. 16.



**SOLID LOG HOME**  
Situated on treed lot that fronts on a waterfront park. Asking \$43,800. Dave Bridgeman. No. 11.

**WATERFRONT**  
1150 sq. ft. cottage on new foundation. 74' of waterfrontage with panoramic view. \$59,400. Dave Bridgeman. No. 7.



### "CUSTOM BUILT - JUST BEAUTIFUL"

\$58,500, 3 bdrm. brick bungalow, eat-in kitchen, separate dining room, lge. livingroom with gorgeous center fireplace, 4 pc. bath, full bsmt., dble. garage, close to beach. Gary Pike. No. 62.

**3 LOTS FOR SALE**  
\$5,000 to \$5,500 each. Municipal water available 6 months per year. These flat lots average 60' x 137'. Bob Sweezy. No. 20.



### \$39,900 BRICK BUNGALOW

3 bdrm., eat-in kitchen, lge. livingroom. Year-round home on lge. lot in Georgian Bay vacationland, 5 mins. to beach. Jack Scott. No. 45.



### DUPLEX - 11 PERCENT MTGE!

\$46,900 - Just reduced! Excellent investment. Upstairs apt. carries mtge. while you live downstairs. Brick. On quiet street near King. Larry Gedge. No. 14.



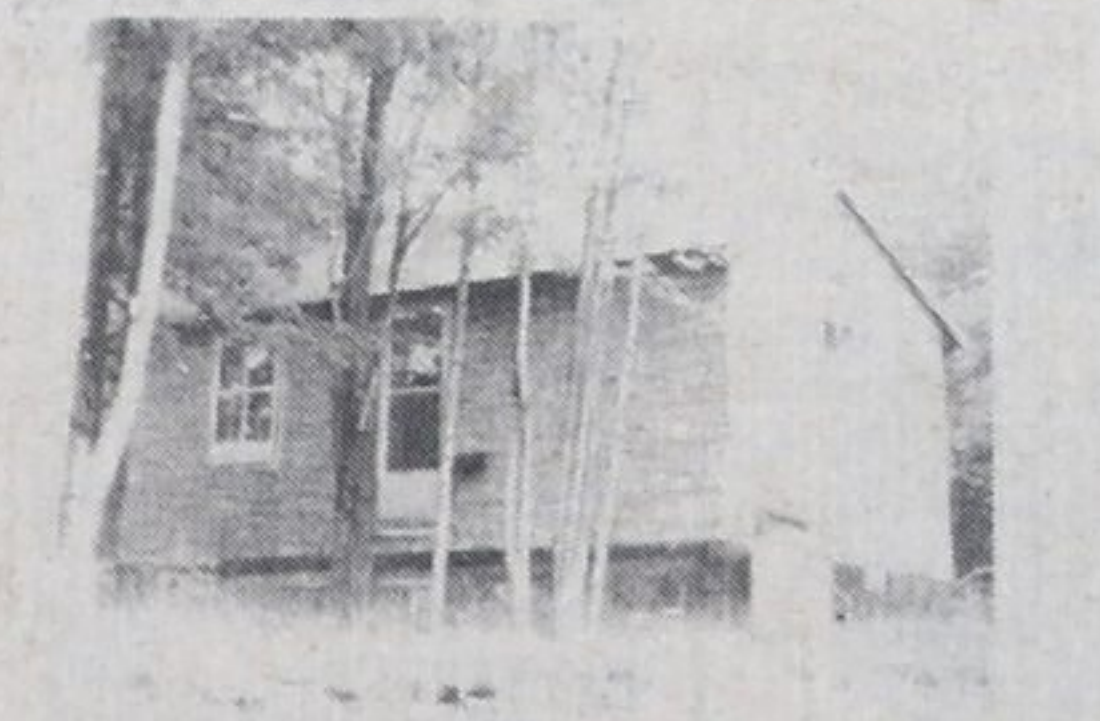
### 10 PERCENT MORTGAGE BUNGALOW

\$53,900. 3 bdrm. bungalow, eat-in kitchen. Full basement, woodstove in rec. rm., workshop, finished fourth bdrm. or sewing rm. Marjorie Contois. No. 12.



### WATERFRONT HOME OR COTTAGE

\$54,875. Insulated, 2 bdrm., renovated kitchen and bathroom. Concrete block foundation. Small boathouse. Bob Sweezy. No. 17.



**INVESTMENT**  
Small bungalow situated on large 121' x 200' lot right in Midland. Prime location. Asking \$33,900. Dave Bridgeman. No. 5.

**PARADISE POINT WATERFRONT**  
\$48,000 89 ft. on water, pie shaped lot. 3 bdrm. cottage with large sunroom. Get the outdoor feeling. Bob Sweezy. No. 19.



### BRULE HEIGHTS \$55,900

Beautiful 3 bdrm. bungalow on nicely treed lot. Fireplace woodstove, 300 sq. ft. deck in very good area. Paul Sauve. No. 4.

### WATERFRONT SUMMER COTTAGE

\$59,900 for this 3 bdrm. cottage on a huge double lot. Situated on picturesque Little Lake, it provides privacy and comfort. Patti. No. 57.



### EXECUTIVE HOME ON 24 ACRES

\$120,000. 4,000 sq. ft. offers 5 bdrms., 3 baths, 2 fireplaces, library, formal dining rm., eat-in kitchen, 2 rec. rms. Mary Thompson. No. 38.



### \$38,900 GEORGIAN SANDS

3 bdrm. winterized cottage or home features full bsmt., brick fireplace, BBQ, wet bar, patio, nicely landscaped on quiet street. Mary Thompson. No. 31.



### \$390,000 THE INN HOTEL

This well established business has a seating capacity of 275 persons. 14 rms. & 2 bdrm. apt. Call Jack Scott today. No. 46.

### AFFORDABLE LUXURY!! \$35,900

This older 3 bdrm. home has been beautifully remodelled. Living offers beautiful fireplace and gorgeous carpeting. Paul Sauve. No. 2.



### A PLEASURE TO VIEW! \$37,500

Very comfortable 3 bdrm. home in quiet area. Across the road from waterfront park. Very interesting property. Paul Sauve. No. 3.

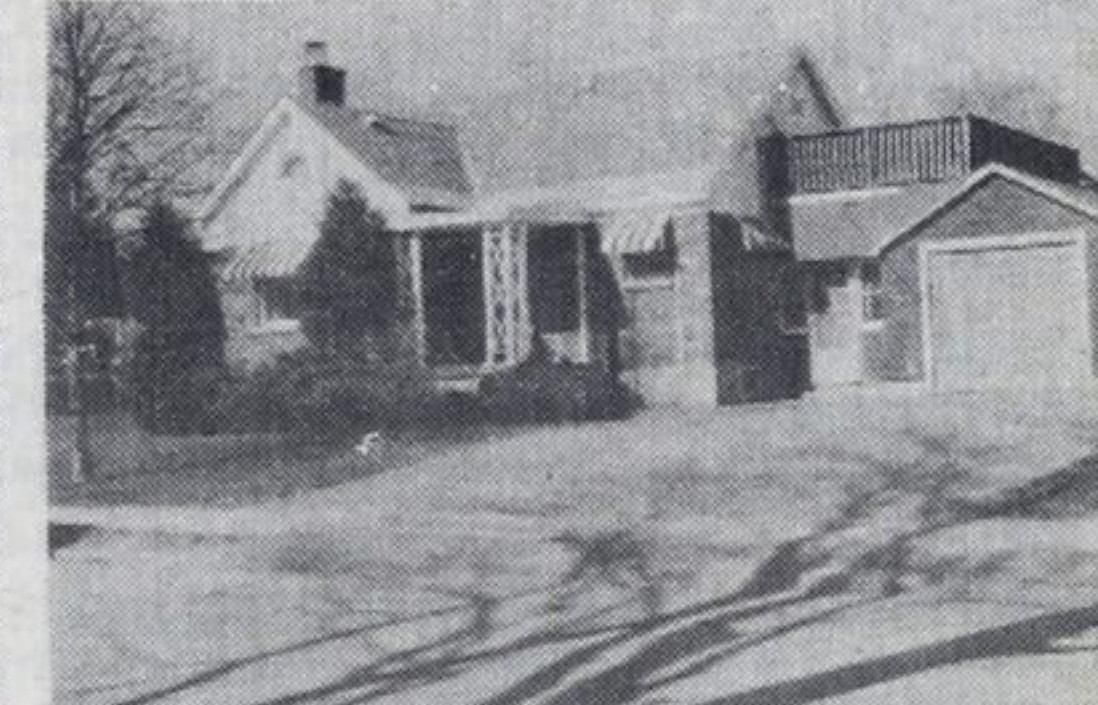
### STORE WITH LIVING QTRS.

\$79,500. Business doing well. Clean modern living qtrs. Upstairs suitable for 2 bdrm. apt. Excellent location in Midland. Ask to see. Larry Gedge. No. 15.



### \$139,000 MIDLAND QUALITY

Gorgeous 3 bdrm. brick home with double garage, stone fireplace, 2 decks & privacy of 2 acres - steps from downtown. Paved area with commercial lights perfect for tennis court. Mary Thompson. No. 34.



### \$55,900 QUEEN ST. MIDLAND

Lovely landscaped 3 bdrm. home with extra kitchenette, fireplace, full bsmt., existing garden, garage, deck. Mary Thompson. No. 32.



### 4 ACRES, 3 MILES TO MIDLAND

\$89,900. 4 levels of efficient luxurious decor includes, family rm., fireplace, private, scenic setting. Becky Marchildon. No. 24.

### BALM BEACH - WATERFRONT

Custom designed, 4 bdrm, 2 1/2 bathrms., 2 fireplaces, plaster walls, exceptional construction. \$125,000. Dave Bridgeman. No. 9.

### Sales staff

Nancy Trowell	636-7957	Carl Davis	322-2962
Dave Bridgeman	549-3693	Laurie Gendron	756-2475
Howard Heacock	322-1753	Clarence Lee	361-2599
Bob Sweezy	526-3985	Becky Marchildon	526-3980
Paul Sauve	549-8174	Barbara Giles	538-1028
Mary Thompson	533-3246	Elmer Strongitharm	686-7960
Gord Touet	322-2245	Gary Pike	549-7696
Paul Vollick	756-2731	Bonnie O'Rourke	526-8413
Frank Wristen	534-3998	Nancy Cardwell	526-9791
Jack Scott	361-2409	Marjorie Contois	534-3634
Harry Hunt	322-1998	Larry Gedge	526-2388
Vince Evenden	526-4032	Margot M. Finan	686-7960
Patti Torrance	549-7037	Steve France	526-7686
		Don Tannahill	534-3106

## A.E. LePage Highway Mall

Highway 27 Midland **526-4271**

Elmvale **322-1381**

Coldwater **835-3343**