

**Farmstead  
and home  
competition**

The 1981 International Plowing Match will be held on the farm of Gordon Atkinson in Simcoe County and will include neighbouring farms in the area.

The date is September 29 through October 3.

In conjunction with the plowing match a Farmstead and Home Improvement Competition is being held.

Objective of the competition is to encourage residents to help make Simcoe County as attractive as possible to visitors to the plowing match.

Many attractive prizes and awards will be given at the conclusion of the competition and a county champion and reserve will be selected in each class.

There are six classes in the competition.

Closing date for entry to Classes 1 and 2 was July 1, 1980.

However, entries may still be made in Classes 3, 4, 5 and 6.

These entries must be made by June 1, 1981. The classes are - class 3, farmstead - most attractive - already improved.

Class 4, rural or urban home - most attractive - already improved (includes towns and villages).

Class 5, most attractive century farm. Class 6, historical home 75 years or older (includes Barrie and Orillia).

The competition is open to residents within the boundaries of Simcoe County.

Each participant may enter one class only. Farmsteads must be owner-operated, with a minimum of five acres in size.

For this competition, a farmstead is defined as that part of the farm comprising of the buildings, the entrance and the immediate surrounding land.

An awards banquet for the competition has been arranged for the Creemore Legion Hall on Wednesday, Sept. 9, all participants will be invited to attend.

Entry fee is \$10, payable with the application, to treasurer, local committee - 1981 International Plowing Match.

Application forms and information concerning the competition may be obtained from committee members, township offices, O.M.A.F. offices, or from Robert Cowan, committee secretary, Box 455, Barrie, Ont. L4M 4T7, - telephone 705-728-2330.

A reminder - the final entry date for classes 3, 4, 5 and 6 is June 1st, 1981.

At 1.20 a.m. Wednesday following a routine vehicle check on Robert Street West, Allan Lacroix, 20, of Perkinsfield, was charged with impaired driving and excess alcohol.

The **BIG SAVINGS** continue during our...

**"GRAND  
OPENING"**



**Sale Ends May 23rd**

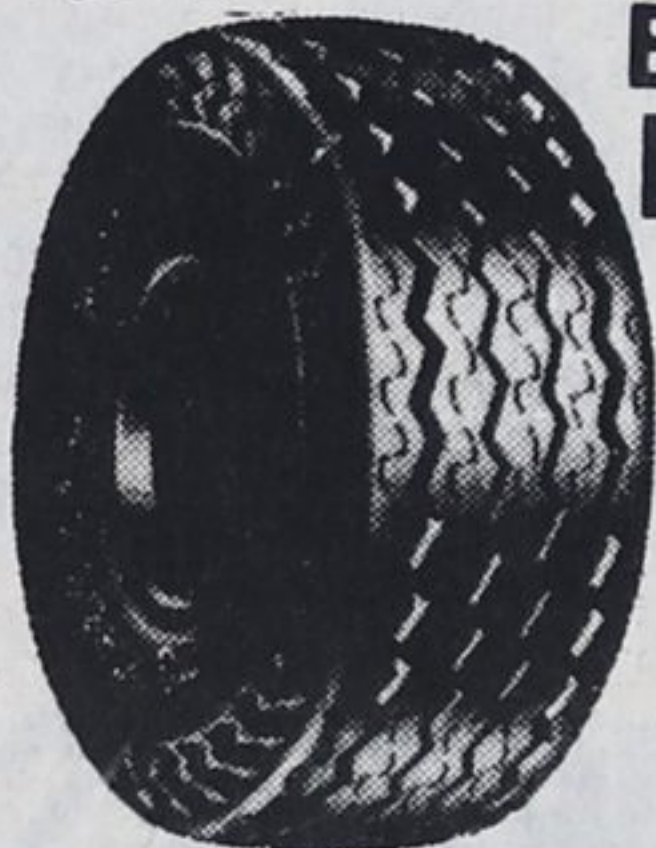
**General Steel Radial  
Whitewalls**

The General Steel Radial features two tough steel belts, a resilient nylon cord body and a gutsy, 5-rib tread. **per tire**

Size P185/75R-13 **\$67.32**  
set of 4 \$63.11



Size	Reg. Price	Sale Price	Ea. set of four
P185-75R-14	99.30	79.44	77.98
P205-75R-14	107.50	86.00	80.63
P205-75R-15	111.70	89.36	83.78
P225-75R-15	130.25	104.20	97.69



**Budget Priced  
Light Truck  
Tire**

The General GLT® is an all wheel position tire offering long mileage, good all weather traction, and a modern tread design.

670x15 6 Ply **\$60.34** each  
Tubeless

Larger sizes in both tube-type and tubeless comparably priced.



**RV  
Letterwhite!  
General  
Grabber LT**

Designed for long mileage, smooth ride and off-road. Featuring a wide traction tread and tough shoulder blocks.

Each set of 4  
10-15Lt 146.30 117.04 **\$109.73**  
11-15Lt 159.80 127.84 **\$119.85**



**General  
Glass Belted  
Performers**

The General Belted Grabber features sporty raised outline white letter styling, two fiberglass belts, a massive polyester cord body and an extra wide traction tread.

Each set of 4  
G60-15 101.65 81.32 **\$76.23**  
L60-15 121.35 97.08 **\$91.01**  
F70-14 91.60 73.28 **\$68.70**  
G70-14 94.85 76.88 **\$71.14**

**Glass Belted Radial  
Whitewalls**

The General Jet Radial features a polyester cord body, two tough fiberglass belts for stability and a wide 5-rib tread for traction.

Size P155-80 R-13 **\$51.22**  
Set of 4 each

Size	Reg. Price	Sale Price	Ea. set of 4
P185-75R-14	75.85	60.65	56.88
P205-75R-14	82.10	65.68	61.58
P205-75R-15	82.50	66.00	61.88
P225-75R-15	98.80	79.04	74.10

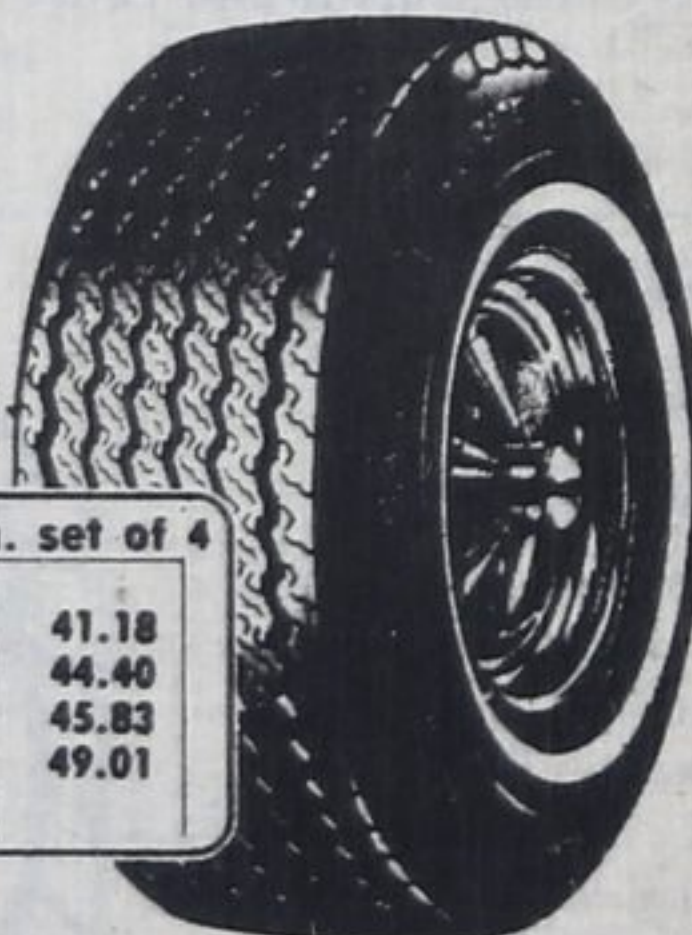


**Polyester Cord  
Tire Buy**

The General Poly-Jet features a smooth riding polyester cord body and a wide flat traction tread. A great tire at a popular price.

Size A78-13 **\$35.14**  
Set of 4 each

Size	Reg. Price	Whitewall	Ea. set of 4
D78-14	54.90	43.92	41.18
F78-14	59.20	47.36	44.40
G78-15	61.10	48.88	45.83
H78-15	65.35	52.28	49.01



**TIRES INSTALLED  
FREE**

Of Charge

WE GIVE  
RAIN CHECKS

WE ACCEPT  
CHARGEX



**RUFF TRACKER  
WHITE**

15" + 7"

**\$38.08**

SIMILAR  
SAVINGS ON ALL  
MAG WHEELS



RAIN CHECK: Should our supply of some sizes or lines run short during this event, we will honor any orders placed for future delivery at the advertised price.



General Tire Store prices and credit terms. Product availability and prices may vary at independent dealers displaying the General sign.

Open Monday - Friday  
8 a.m. - 5:30 p.m.  
Sat. 8 a.m. - 3 p.m.

**CENTRAL ONTARIO TIRE LTD.**

761 Vinden St. Midland

Barrie, 151 Tiffin St. 728-2855

**526-2248**

**Sooner or later, you'll own Generals**