

What's Your E.Q.? Energy Quotient, That Is

If you had to take a quiz on how well you save energy, do you know how high you'd score? Well, here's a simple test designed by the CertainTeed Home Institute that will show you just where you stand in the class of energy savers.

1. What Is Your Thermostat Setting? If your winter thermostat setting is 68 degrees or lower during daytime, score 20 points; score 15 points for 69 degrees; 10 points for 70 degrees. If your thermostat is set above 70 degrees, score zero.

In winter, if you set your thermostat back to 60 degrees or less at night, score 20 points; score 15 points for 61 or 62 degrees; 10 points for 63 or 64 degrees; 5 points for 65 degrees. If your thermostat is set above 65 degrees at night, score zero.

2. How Well Is Your Attic Insulated? Check with your local building supplies center or an insulation contractor to determine how much fiber glass attic insulation you should have where you live. If you already have the recommended thickness, score 25 points. If you have three inches less than you should, score 15 points. If

you have six inches less than you should, score zero.

3. Is Your Floor Insulated? If you have unheated space under your house, and there is insulation under your floor, add 10 points. If the floor isn't insulated but the joist band is, score 5 points. If there is no insulation, score zero.

4. Do You Have Storm Windows? If you live in an area where the temperature frequently falls below 30 degrees in winter and you use storm windows, score 15 points. If you do not have storm windows, score zero. If winter temperatures are milder where you live, score 15 points if you open the drapes on the south side of your house during the day to let in the

sun. Score zero if you keep your drapes closed during the day.

How Well Did You Do? If you scored 90 or above, you are at the top of the energy-saving class. Your fuel costs are probably lower than most because of steps you've already taken.

If you scored less than 90, however, you are spending more money on energy than you need to. Check back through the quiz to see where you lost points.

Chances are your score came up short, because your home like many others, is not adequately insulated. But, gaining points here isn't difficult. In just an afternoon, you could add fiber glass insulation to your attic and

Color Schemes For the Bath

Make a water color bathroom by teaming solid color navy, aqua and white towels with navy and white flower printed curtains. Use a milk glass dish for a soap holder and a milk glass egg as a powder box.

Combine orange with pink or yellow for a South-of-the-Border feeling. Put gaily colored Mexican pottery and papier mache

mugs to use as accent pieces, organizers. You might make your own papier mache objects.

Adding On?

When adding a room to your home, try to pick a location where an existing window or door can be used as a connecting passageway. By doing so, costs are reduced because the existing opening already will have a functioning header.

begin saving energy immediately. (Savings vary. Find out why in the seller's

fact sheet on R-values. Higher R-values mean greater insulating power.)

You'll find yourself at the head of the class in no time flat.

SAKRETE® THE NAME PEOPLE LOOK FOR

The "SAKRETE" diamond stands for products, each one especially designed to save you money, time, and headaches in rebuilding or repairing around the home. Just add water and it's ready to use.

FREE INSTRUCTION BOOKLET



BEAVER

159 Fourth St., 526-5416



Another do-it-yourself product from FLINTKOTE

CONCRETE MIX	SAND MIX	MORTAR MIX
<p>use for walls, floors, footings, patios, steps, setting poles & posts</p> <p>\$2.99</p>	<p>for patching steps, walks, walls, laying patio flagstones, grouting.</p> <p>\$2.49</p>	<p>for laying brick stone or block, pointing up or repairing brick walls and chimneys.</p> <p>\$2.49</p>

HURONIA NURSERIES

Nursery Stock and Supplies

Shade Trees • Evergreens • Perennials
• Hedge Plants • Flowering Shrubs
• Sod • Roses

"Landscaping a Specialty"

RR.1, Wyevale, Ont. L0L 2T0

Milton or Gord Leonard

Elmvale 322-1994

Suppliers to the Building Industry for over 30 years.

Atlas BLOCK CO. LIMITED

NWY 12 VICTORIA HARBOUR 534-7219

Viceroy

Homes

VICEROY'S great pre-season sale is now on. Here's how it works. If you order your Viceroy home or cottage now, we will pre-manufacture it ahead of the spring rush and pass the saving on to you.

You receive a complete super winterizing package FREE.

- 1) Triple seal glass, factory installed, on all casement windows and fixed lites
- 2) Triple seal safety glass on all sliding glass doors, skylights and greenhouse windows.
- 3) 6" R20 insulation and vapor barrier supplied for exterior walls.
- 4) 8" R28 insulation and vapor barrier supplied for ceilings.
- 5) Sill gasket "ETHAFOAM" is used to control air infiltration between the sill plate and foundation wall.
- 6) Sealant is provided to seal all joints on exterior wall sections and where sill plate meets the subfloor.
- 7) Viceroy "80's" energy efficient steel clad entry doors complete with weather stripping and raised thermal break sill to prevent water and air penetration.

SAVE SALES TAX

You save provincial sales tax if you take delivery by June 30th. A tax of 7% can mean thousands of dollars on the cost of a home. This can be hard, cold cash in your pocket. Here's your opportunity to get some of your tax dollars back!

Permanent Homes Catalogues

(\$5.00)

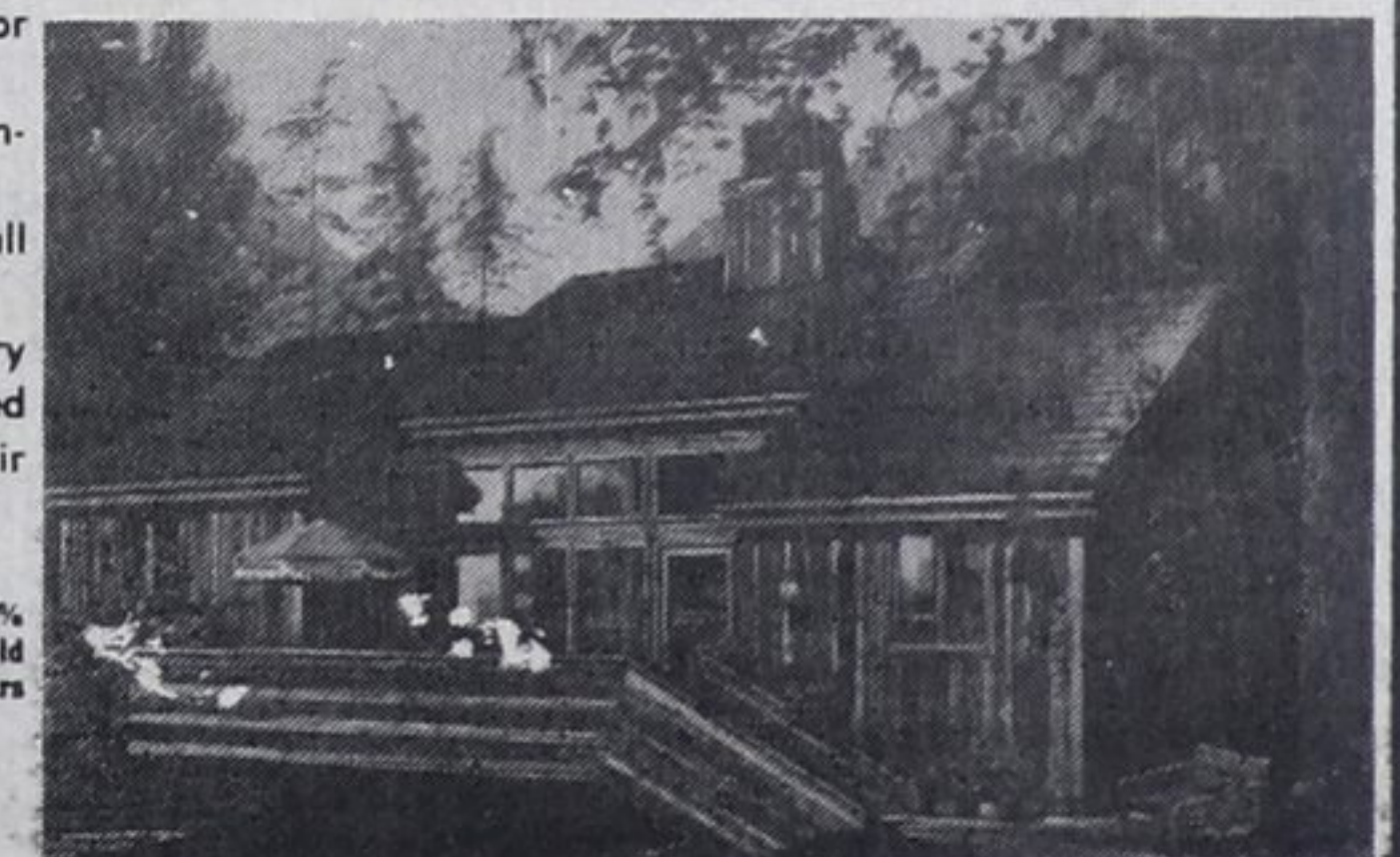
Vacation Homes Catalogue (\$3.00)

726-5525

Evenings 726-5446 or 726-8999



•Aspen-1,434 sq. ft. Phase I- \$26,266.
Phase II- \$29,923.



•Banff-1,796 sq. ft. Phase I- \$23,017
Phase II- \$26,517

W. S. RAWN HOMES
355 BAYFIELD ST. BARRIE
(ABOVE HOWARD JOHNSON'S)

* Phase one prices not erected
52 models to choose from

★ Visit our display model now being erected on River Rd. W., Wasaga Beach on Fri.-Sat.-Sun.-Mon.