

Wood Moulding: Used More for Decoration, Too

The traditional use of wood moulding hasn't changed much over the years. It's still used to cover up imperfections at corners and seams of walls, ceilings and floors. But, its use as a decorative wall accent, improving a piece of furniture, or as a room divider is coming in to favor more and more.

The key to proper use and ease of working with wood moulding lies with planning, the right tools and practice, says the Wood Moulding and Mill-

work Producers.

The initial step in any project is planning. A list of materials, tools and supplies for the project should be made before any work begins.

For most moulding work, you'll need a miter box and a small, fine-toothed saw to cut clean, accurate angles. A hammer, nail set and finishing nails are nearly always necessary. Sometimes, a coping saw is required to cope a joint for a tight fit. Other important tools in-

clude a tape measure, glue, sandpaper and wood filler.

Though practice may not always make perfect, it helps. Use some scrap pieces to practice mitering or coping at various angles before cutting the actual piece you'll need.

A corner clamp is a useful tool when clamping mitered corners together for a tight joint. Once the corner is glued and clamped, it should be nailed.

When gluing pieces together, be careful not to get glue on the surface to be finished. If the glue oozes out from a joint, wait until it dries, then cut or chip the glue away. Smeared glue on a wood surface will impair the finish.

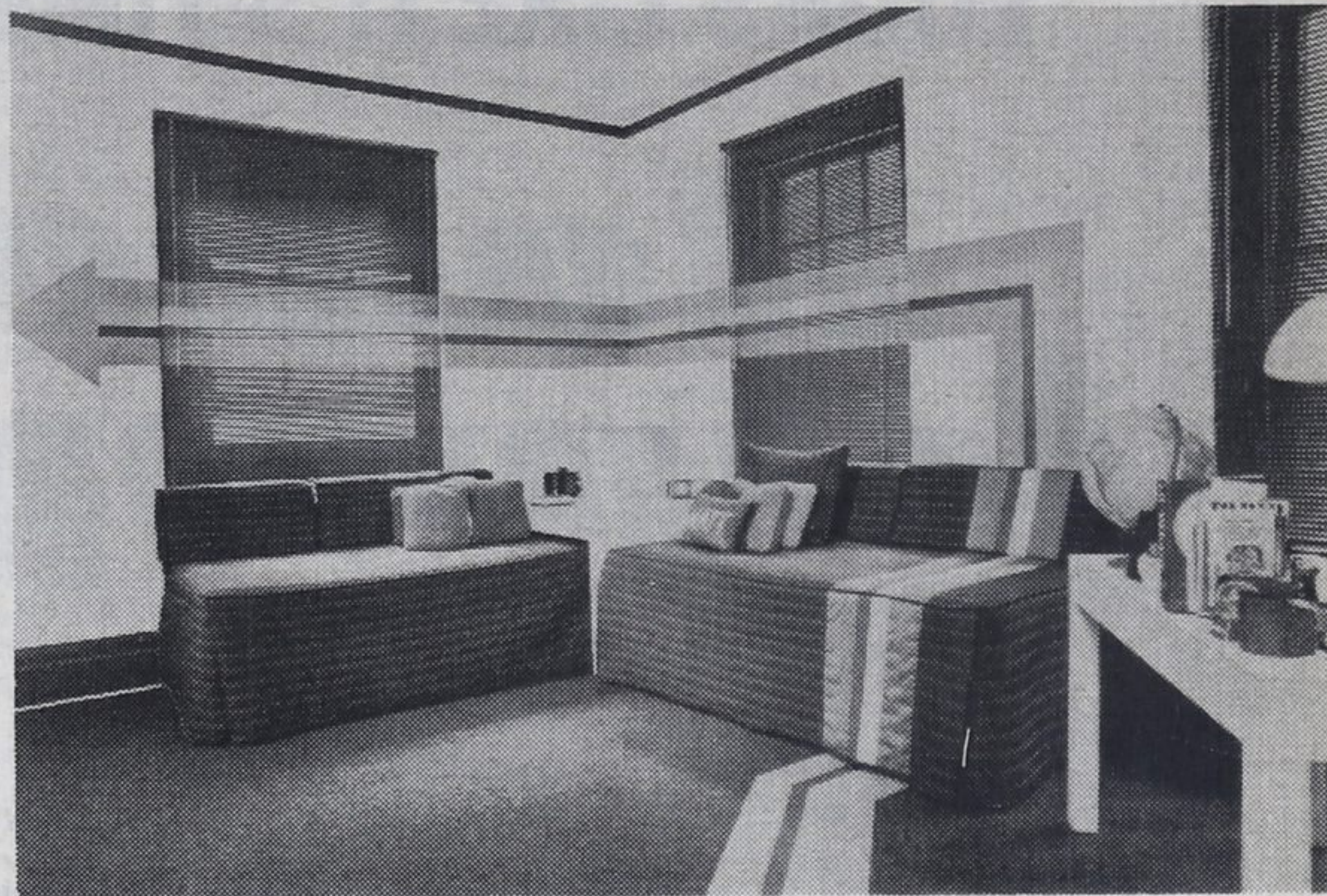
Correctly measuring moulding can save expense as well as trouble. When mitering moulding to make a square or frame,

remember to use the outside dimension as the length required.

Moulding is available in

3 to 16-foot lengths. Use short pieces whenever possible. When determining the amount of wood

moulding you need, round off to the next largest foot to allow for cutting and trimming.



SEP 79

HIS OWN SPECIAL PLACE: How to take a rather dark room in an elderly building and make it into a special place for a growing boy was the problem posed to designer Elyse Lacher. She began with a directional graphic: red, yellow, and blue in regimental-stripe, sun tone in one corner of the rug, over the bed, up the wall and through the Flexalum blinds, finally stopped by the arrowhead. Carpet is deep blue as is the blue jean denim on beds. The primary background tone of the blinds is the same blue. Walls are sparkling white with moldings at ceiling painted deep blue. The room sparkles with energy and fun and has, of course, become a gathering place for 9-year-old Matt and friends.

Make Room for Dad

When considering making home improvements, don't overlook space for a den for Dad. Every man likes a place he can call his own, whether it's to putter around in or just for loafing.

If you decide on a room

for Dad, be sure and keep the furnishings appropriately masculine. Tweeds and plaids in earthy tones are good for upholstery fabrics, while paneled walls, rugged carpet textures and leather accents help to create an atmosphere he'll feel comfortable in.

Do-It-Yourself Project:

Decorator Tiles Easy to Maintain

Householders now can enjoy the soft-sheen, natural look of decorator floor tile without ever having to scrub it or wax it.

GAF's No-Wax Decorator floor tile combines durable good looks with easy maintenance.

The new tile features a urethane finish that protects its surface so dirt can't get through. Dirt can't get a foothold, so the floor cleans with just a damp mopping and the soft, natural sheen lasts and lasts. Scuffs can't penetrate, either, so your floors look better, longer.

The tiles come in several attractive patterns, simulating wood, brick or ceramic tiles. All are available with Sure-Stick, the self-adhesive backing for quick, easy installation.

Simply peel off the paper backing and press the tile in place. Without adhesives, there's no messy cleanup, and you can walk on your new floor the same day you install it.

Tips on Installing

Here are some do-it-yourself tips:

Before you start, make sure that your floor is clean, dry and properly prepared. Get all your materials and equipment together before you begin.

How much tile do you need?

Gafstar floor tiles are 12x12—one square foot. Multiply the width of the room by the length and add 10 percent extra to allow for fitting and possible later repair.

Concrete floors should be smooth and dry, with holes and cracks filled with latex underlayment. If the floors were painted with rubber

latex paint, you can lay the tiles over it, but with oil base paint, it must be completely removed before installing new tile.

Wood floors should be firm and smooth and have at least 18"-deep, cross-ventilated air space beneath them. Badly worn boards should be replaced and loose boards renailed. Particle, chipboard and flake board are not recommended as underlayments for Gafstar floor tile.

How to Measure

Measure the room correctly. First, remove any quarter round molding or cove base around the room. Because adjacent walls are rarely at right angles, best results will be obtained by installing the tile starting from the center of the floor. Find the center by measuring the length of each side wall and driving a nail into the floor at center. Connect center points on two opposite side walls by tightly stretching a chalked string between these two points and snapping it against the floor. The lines must be at right angles to assure an even pattern.

Temperature Is Important

Keeping the tile and the room at 70 degrees for 48 hours beforehand will assure easy installation. Remove the backing paper just before putting each tile in place. Do not remove backing paper from more than one tile at a time.

Start laying the tiles in the center of the room, making sure that the first tile is square with the chalk lines. Butt each tile squarely up to the adjoining tile, making sure the corners meet exactly.

Wet n' Wild

POOLS & EVERYTHING FOR 'EM...

ROUND

ABOVE GROUND

COMPLETE WITH JACUZZI FILTER AND SKIMMER

18 FT
\$1075⁰⁰

24 FT
\$1395⁰⁰

18ft. Alum.
\$1229⁰⁰

LIMITED QUANTITIES

OVAL

ABOVE GROUND

COMPLETE WITH JACUZZI FILTER AND SKIMMER

15 FT X 25 FT
\$1675⁰⁰

15 FT X 30 FT
\$1895⁰⁰

LIMITED QUANTITIES

SOLAR BLANKETS

ABOVE GROUND	18'	24'	15' x 30'
	64.95	99.95	95.95
INGROUND	16' x 32'	18' x 36'	20' x 40'
	149.95	188.95	231.95

NEW

PIONEER'S EXCLUSIVE SOLAR SYSTEM

\$1345⁰⁰

COMPLETE WITH PLUMBING KIT FOR THE DO-IT-YOURSELFER

*LARGE ENOUGH FOR THE AVERAGE 16 x 32 POOL

KIDNEY

INGROUND POOLS

14x28

\$5945⁰⁰

COMPLETELY INSTALLED

DIFFICULT ACCESS OR GRADE SLIGHTLY HIGHER

TOP QUALITY CHEMICALS & ACCESSORIES

25 LBS STABILIZED GRANULAR CHLORINE \$71⁹⁵	20 LBS UNSTABILIZED GRANULAR CHLORINE \$38⁹⁵	1 GALLON MURIATIC ACID \$2⁹⁵	20 LITRE LIQUID CHLORINE \$9²⁵	VAC HOSES 30 FT. INGROUND \$18.95 30 FT. ABOVE GRD \$9.95 OTHER SIZES ALSO ON SALE
LEAF NETS \$5⁹⁵	12 FT. VAC POLES \$13⁹⁵	REPLACEMENT ANODES \$1⁹⁵	JACUZZI FILTER GAUGES \$6⁵⁰	THERMOMETERS \$1⁹⁵

CHARCOAL WATER SMOKERS

\$33⁹⁵

KREEPY KRAULEY AUTOMATIC VAC SYSTEM

\$625⁰⁰

THIS SALE ONLY

JACUZZI GAS B-B-Q TOP OF THE LINE

\$389⁹⁵

COMPLETE WITH SHELF AND TANK

PIONEER POOLS

A RELIABLE SIGN OF SUMMER FOR 16 YEARS

North Barrie Plaza 1-726-4606