


Classified

Classified Word Advertising Rates	
Up to 18 words	
First insertion	3.20
Second insertion	3.00
Third insertion	2.90
Subsequent insertions	ea. 2.90
Additional words	.11

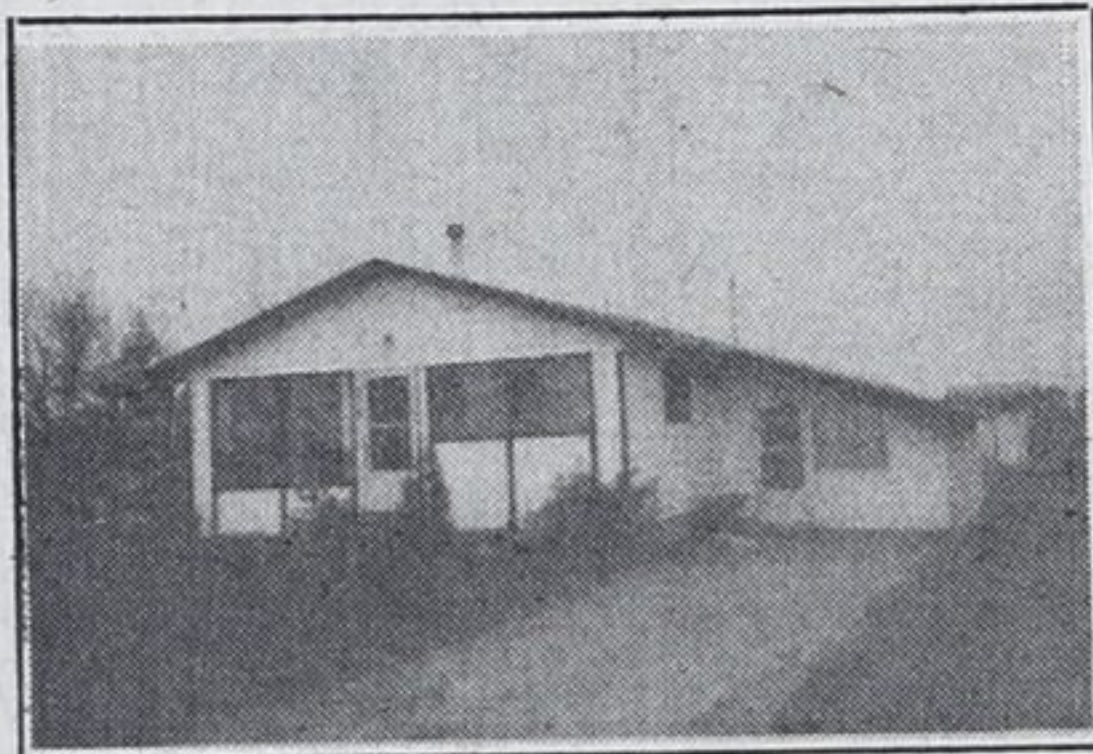
FOR SALE	MOTORCYCLES	FOR RENT	FOR RENT	FOR RENT	FOR RENT	FOR RENT
7 pair vinyl shades. 48" x 54" \$30. for lot. Phone 835-2199. 36,38,40	250 Honda Enduro, good condition, 14,000 km. Call 526-8212. 36,37,38	One and two bedroom apartments for rent. Call W. C. Player Real Estate Broker - 322-1991. W24TF	Victoria Harbour - large family home now available, \$250 monthly plus utilities. Call Jim Adamson, Bryson McQuirter Realtor, 526-9391. 29TF	2 bedroom apartment. Parking, close to shopping, \$250 per month plus hydro. Available June 10. Phone 526-4009, 526-2297. 36,37,38	Bachelorette apartment. Separate entrance, heat, hydro, fridge and stove included. Next to park, \$185. Phone 526-9898. 36-37	50 acre pasture farm, fenced, water supply, near Wasaga Beach, call Gord 322-2245 evenings or Tony 416-233-8211 evenings. 36,38
Wieners for sale. Call 322-3076 after 6:00 p.m. 36,38,40	Classified ads get results	Small 1 bedroom cottage, \$200 monthly, utilities included. Balm Beach. Phone 361-1391. 36,37	REAL ESTATE	REAL ESTATE	REAL ESTATE	REAL ESTATE
8 aluminum combination windows. 28" x 36" \$20 each. Phone 835-2199. 36,38,40	WANTED TO RENT	In Elmvale, quiet 2 bedroom apartment for rent. Close to shopping. Phone 737-2695. 36WTF	REAL ESTATE	REAL ESTATE	REAL ESTATE	REAL ESTATE
1-Homelite 360 powersaw, used one month. 1-P55 Partner powersaw, used one year, new bar and chain, rebuilt carburetor and new coil. Call 835-5650 after 6:00 p.m. 36,38,40	Family wishes to rent a three bedroom waterfront cottage. July 11 to July 25, or July 18 to August 1. Call 322-2535. 36,38,40	Kerr Street apartment. One bedroom. Call 737-3647 after 5:00 p.m. 36WTF	REAL ESTATE	REAL ESTATE	REAL ESTATE	REAL ESTATE
LAWN SALES	REAL ESTATE	REAL ESTATE	<div style="border: 2px solid black; padding: 10px; text-align: center;"> <p><i>Are you interested in becoming a real estate salesperson?</i></p> <p>Next course starts May 4th</p> <p><i>For more information contact:</i></p>  <p>526-2293</p> <p>35. 36.</p> </div>			
Club Richelieu Penetanguishene organise un "garage sale" samedi le 9 mai a 8 hr a.m. a 131 rue Main Penetanguishene. 36,37	John P. Gorman B.A. LL.B. Carries on the Practice of Law in the Towns of Midland and Newmarket for the convenience of his clients in his Preferred Areas of Practice, including Commercial and Residential Real Estate, Development, Conveyancing, Landlord and Tenant, Corporate and Commercial Law, Debtors' and Creditors' Rights, Consumer Protection, Estate Planning, Wills and Administration of Estates and Trusts. Consultations by appointment only, except Saturday. Mr. Gorman is available from 9:30 a.m. to 1:00 p.m. each Saturday for phone or drop-in office consultations. (705) 526-3737 518 Elizabeth St., Midland, Ontario. L4R 2A1 (416) 895-3737 207 Main Street S., Newmarket, Ontario. L3Y 3Y9 29TF					
Garage sale, Saturday, May 9 at 131 Main St., Penetanguishene, 8 a.m. Organized by Club Richelieu. 36,37						
May 9 and 10, 10:00 a.m. to 5:00 p.m. Anten Mills, County Rd. 22. Swivel rockers, portable bar, covered utility trailer, tools, etc. 36						
Yard sale - May 9, from 8 a.m. to 1 p.m. at 4 Rei Court, Sunnyside. 36,37						
Huge yard estate sale, continuous from May 7. 35 Peter St., Elmvale. 36						
BOATS & MOTORS						
23' Wooden Lapstrake, 8' Beam, 2 Berths, Portable Head, Sink and Alcohol Stove. Full camper back. Very sound hull, 6 cyl. Chrysler Crown. \$2,000.00 Call Elmvale 705-322-2574 34, 36						
FISHERMAN'S SPECIAL						
12 Foot Aluminum Cartoppers \$649.50 Johnson outboards, accessories, canoes. Univision Trailers Oliver - Doral - Campion PARKVIEW MARINE LTD. Midland 1-705-526-4414 Open 7 days a week 36, 37.						
DS 16 foot sailboat, sleeps two with 3ft. berths and roller furling of jib and main, red sails and new white sails with 170 percent Genoa Bow Pulpit and teak handrails. \$2,950. Phone 322-1126. 6:00 to 9:00. 36,38,40						
1978-16 ft. Sunray with 120 hp. i/o and equipment and trailer. Phone 526-6731. 36,37,38						
18 ft. Grew boat, 130 Volvo i/o, solid mahogany plus trailer, \$1,200 firm or take snow-blower as trade-in. Phone 526-9898. 36,37						
For sale - 19 1/2 ft. Bowrider 165 Mer-cruiser. Call 549-2045 after 6. 36,37						
Shepherd 16' classic mahogany plank bed runabout with trailer, 80 hp. i/o mercury. \$2,950. Phone evenings 322-1251. 36,38,40						

A. E. LEPAGE

(ONTARIO) LTD. • REALTOR

The name friends recommend

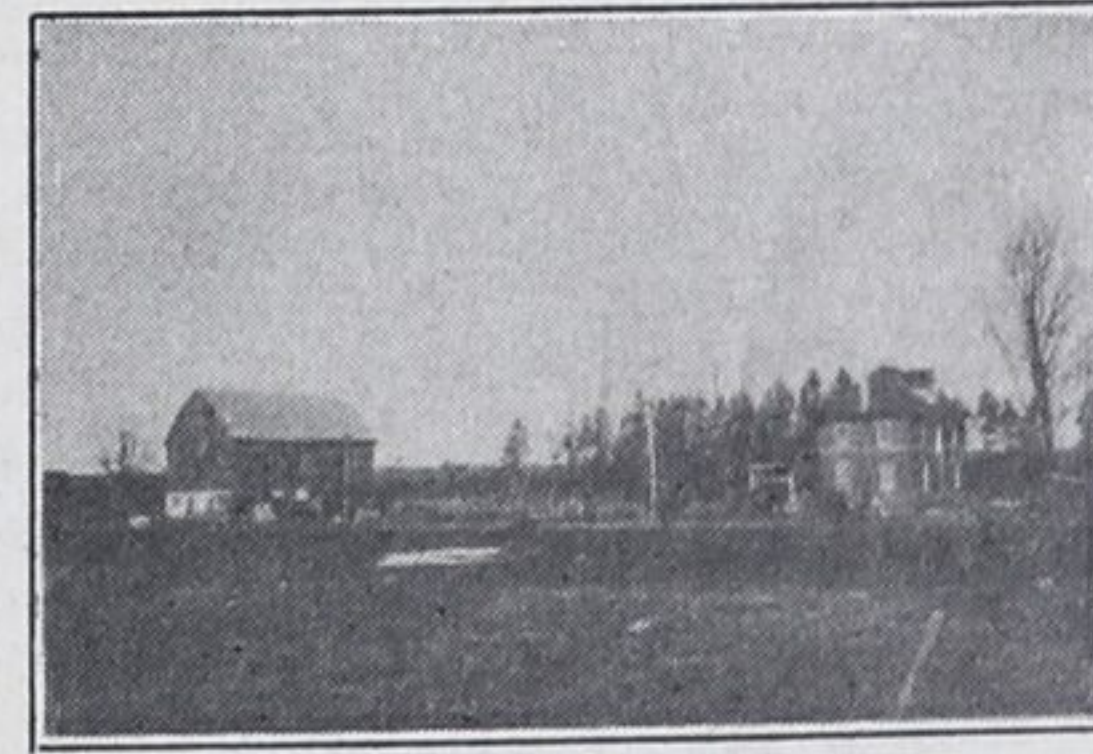
Elmvale Office 322-1381



WATERFRONT - WOODLAND BEACH
\$160,000. Luxurious three bedroom, 4 level retreat, three decks, broadloom, garage, 2 skylights, fireplace, furnished. Carl Davis. No. 5.



ELMVALE AREA - 100 ACRES
\$116,000. Flat, corner farm with older two storey home, repairs needed. Barn with high head room for horses. Carl Davis. No. 8.



"TIRED OF RENTING / READ ON"
\$34,900. Comfortable, 3 bdrm. home, within the village of Elmvale. Broadloom floors, built-in dishwasher, spacious entrance, rec. room. Carl Davis. No. 9.

LOTS

\$16,500. 55' x 140'. Treed lot on River Road East, Wasaga Beach. No. 10.
\$10,500 - \$11,500. Three good building lots north of Elmvale on Cty. Road 6. No. 11.
\$11,900. 86' x 200' At Wasaga Beach. Zoo Park Road. No. 12.
\$10,900. 90' x 170' Golf Course Road. Wasaga Beach. Try your offer. No. 13.

Call Carl Davis for the above lots.

FIVE ACRES WITH HOME
\$31,000. Handyman's touch required to finish renovating. 3 bedroom home, small creek, new septic system. Gord Touet. No. 4.

GEORGIAN BAY / BLUEWATER BCH.

\$79,900. Attractive variety store with five bedroom, year-round, living accommodations. Good retirement location. Carl Davis. No. 6.

WOODLAND BEACH - COMMERCIAL
\$110,000. Renovated, duplex with one and two bedroom rental units, plus a two bedroom cottage, close to a sand beach. Carl Davis. No. 7.

Sales staff		
Nancy Trowell	636-7957	Carl Davis
Dave Bridgeman	549-3693	Laurie Gendron
Howard Heacock	322-1753	Clarence Lee
Bob Sweezy	526-3985	Becky Marchildon
Paul Sauve	549-8174	Barbara Giles
Mary Thompson	533-3246	Elmer Strongitharm
Gord Touet	322-2245	Gary Pike
Paul Vollick	756-2731	Bonnie O'Rourke
Frank Wristen	534-3998	Nancy Cardwell
Jack Scott	361-2409	Marjorie Contois
Harry Hunt	322-1998	Larry Gedge
Vince Evenden	526-4032	Margot M. Finan
Patti Torrance	549-7037	Steve France
		Don Tannahill
		534-3106

A.E. LePage
Highway Mall
Highway 27 Midland
526-4271
Elmvale Coldwater
322-1381 835-3343