

Classified

Classified Word Advertising Rates	
Up to 18 words	
First insertion	3.20
Second insertion	3.00
Third insertion	2.90
Subsequent insertions	ea. 2.90
Additional words	.11

SERVICES

When the time comes in your family



There is one man you should see and rely upon, the man in your community allowed to sell the most respected name in monuments, the world over...

SANDERSON
 Michael J. Stone
 322-2732
 Elmvale
 Julien Beausoleil
 84 Poyntz St.
 Penetanguishene
 Frank Doherty
 District Sales Manager
 526-2924
 Midland
 W9TF

WANTED TO RENT

Small house required with 1 to 2 year lease, Port McNicoll to Coldwater area. Country preferred. Have references. 1-416-656-0475.
 32 to 35

Wish to rent a garage for storage of 1979 Chrysler. Please phone terms to Romeo Asselin 549-7437.
 32-33-34

3 bedroom house preferably waterfront, for May 25. Call 835-3139.
 32-33

3 bdrm cottage to rent for part of July. Would prefer Balm Beach area. Call 1-416-275-7311.
 STF

Large shoreline cottage with sandy beach within 30 minutes drive from Midland. Required for two weeks around July 25 - August 7. Must have indoor plumbing, hydro, fridge, stove. Must know soon - Call P. Deault 526-6455.
 32

2 bedroom house or an apartment in Midland, by June 14. References available. Phone 526-2945.
 32

REAL ESTATE

Orr Lake North Shore 3 bedroom home overlooking lake. Inaround pool, garage, rec room, fireplace, \$59,900 private. All contents, boats, motors, vehicles etc. 322-1392
 32,33

DO YOU HAVE A MORTGAGE YOU WANT TO SELL?
 We buy and arrange mortgages. For further information call:
 526-2286
 or drop into our office:
AVCO FINANCIAL SERVICES REALTY LTD
 279 King St, Midland
 32. 33.

PETS & LIVESTOCK

Purebred Spitz, female, spayed. Excellent companion and watchdog but jealous of baby. 549-3521. 32-33

Golden Retriever pups ready May 1, \$200, includes papers and shots. Dam: Mundy's Bay Mandingo Bathsheba (Yeo Line). Sire: Chittendon's Brandy Sniffer (Skylon Line). To view call 526-2937.
 25 to 32

Stock calves for sale. Harold Graham, 534-7667. W30-W32

LAWN SALES

Garage Sale, Saturday, April 25, 9 a.m. at 320 Second St., Midland. Baby furniture and accessories, bed, dressers, bikes and many miscellaneous items. 32-33

LAWN SALES

Lawn Sale-Saturday, April 25 from 9 to 3 at 434 Russell St., Midland. 32

FOR RENT

Orr Lake 3 bedroom house with lake & highway frontage. \$225.00 per month, hydro included. References, no dogs. Call 416-859-3899. 32

Space for rent in rear of store, on main street of Elmvale. 600 sq. ft., window and sign space available. Call 322-3031. 32

3 bedroom house with garden. Consc 1 Tay. No pets please. Available June 1st. Apply 526-4360. 32

FOR RENT

2 bedroom semi-detached, close to downtown, schools and industry, \$255 per month plus utilities. Available May 1. Call 526-8918 after 3:30 p.m. 32-33

Victoria Harbour - large family home now available, \$250 monthly plus utilities. Call Jim Adamson, Bryson McQuirter Realtor, 526-9391. 29TF

FOR RENT

Modern 4 bedroom bungalow, gas heat, full basement, and fireplace. Apply at 322-2223. Available May 1st. 32

At Waverley spacious 3 bedroom apartment, available immediately, utilities included. Also near Orr Lake 1 bedroom or bachelor apartment, available immediately, utilities included. Call evenings 549-7326. 30 to 33

FOR RENT

Why mess up your house, rent the Wyevale Orange Centre for your party, dance or other functions. Call 322-2647 for rates. 11TF

REAL ESTATE

John P. Gorman B.A. LL.B.
 Carries on the Practice of Law in the Towns of Midland and Newmarket for the convenience of his clients in his Preferred Areas of Practice, including Commercial and Residential Real Estate, Development, Conveyancing, Landlord and Tenant, Corporate and Commercial Law, Debtors' and Creditors' Rights, Consumer Protection, Estate Planning, Wills and Administration of Estates and Trusts.
 Consultations by appointment only, except Saturday. Mr. Gorman is available from 9:30 a.m. to 1:00 p.m. each Saturday for phone or drop-in office consultations.
 (705) 526-3737
 518 Elizabeth St., Midland, Ontario. L4R 2A1

FOR RENT

One and two bedroom apartments for rent. Call W. C. Player Real Estate Broker - 322-1991. W24TF

REAL ESTATE

(416) 895-3737
 207 Main Street S., Newmarket, Ontario. L3Y 3Y9
 23TF

Storage space FOR RENT
 2 car garage conveniently located in downtown Midland. Call 526-2283.

A. E. LePAGE

(ONTARIO) LTD. • REALTOR

The name friends recommend

Elmvale Office 322-1381



WOODLAND BEACH - RETREAT
 \$46,700. Fantastic, 3 bdrm. winterized cottage, central propane heating, cedar cove exterior, garage & a short walk to the beach. Carl Davis. No. 1.



HOMETOWN PARK WASAGA BEACH
 \$10,500. Year round, three bedroom 12 x 60' mobile home, park facilities. Include tennis, shuffleboard, swimming and golf. Carl Davis. No. 2



GEORGIAN GLEN ESTATES
 \$21,500. Clean, three bedroom 14 x 62' mobile home, four years old, mostly retired people in park. Central Wasaga. Carl Davis. No. 3.

MEDONTE TOWNSHIP - ACREAGE
 \$42,900. Picturesque, rolling hillside, 25 acres, near Orr Lake, two road frontages. Central to most sporting events. Carl Davis. No. 17.

RIVERFRONT HOME OR COTTAGE
 \$73,000. Choice docking area for boats, 3 bedrooms, 2 baths, electric furnace, thermo windows, sundeck and patio. Gord Touet. No. 7.

DOUBLE WIDE MODULAR HOME
 \$44,900. Full basement with rec. rm. and wood stove, oil furnace, separate kitchen with lots of cabinets. Gord Touet. No. 8.

JUST STEPS TO THE BEACH
 \$85,000. Stone and brick exterior, 3 bdrms, full basement, 2 fireplaces, ceramic tile floors, electric heat. Gord Touet. No. 9.

RIVERFRONT - WASAGA BEACH
 \$68,900. Appealing 2 bdrm., brick home, massive fireplace, family rm., bar, deck, garage, boat dock. Terms. Carl Davis. No. 10.

LARGE HOME - SMALL PRICE
 \$27,900. 14 x 23' living rm., with hardwood floors, 3 bdrms., newer bath, oil furnace, garage, corner lot. Gord Touet. No. 11.

CENTRAL ELMVALE LOCATION
 \$44,500. Two storey brick home with double garage and workshop, oil furnace, veranda, 3 bdrms., eat-in kitchen. Gord Touet. No. 12.

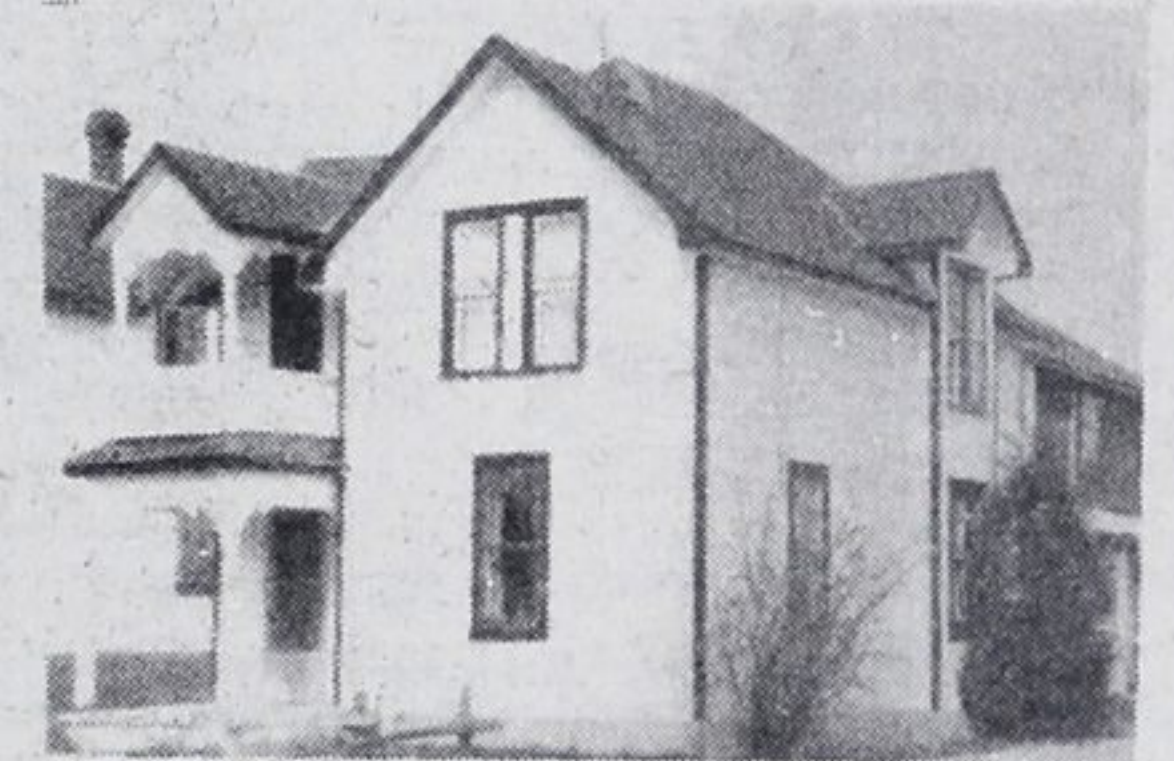
SCENIC MEDONTE TOWNSHIP
 \$123,500. 100 acre farm with good brick home, 7 acres bush, 2 barns, shed, spring fed creek, fully fenced. Gord Touet. No. 13.

BUSINESS AND RESIDENCE
 \$79,000. Choice commercial zoning, former store, banquet hall and 3 bdrms. quarters, 2 fireplaces, corner lot. Gord Touet. No. 14.

DEANLEA BEACH LOT
 \$23,500. Ready to build - 100' frontage - 800 gal. septic - 70' drilled well. Carl Davis. No. 15.

WYMBOLWOOD BEACH
 \$18,500. Prime building lot, close to sand beach. 70 x 170' Septic system installed. Carl Davis. No. 16.

WASAGA BEACH
 \$11,900. Two cabins, on a 60 x 225' treed lot. Located on Golf Course Road. Terms can be arranged. Try your offer. Carl Davis. No. 18.



CENTRAL / BARRIE-MIDLAND
 \$34,500. Three bdrm. home with country setting, 2 car garage / workshop, fireplace, close to school. Hillsdale. Carl Davis. No. 4.



BLUEWATER BEACH RETREAT
 \$53,900. Newer 3 bdrm. cottage or residence, rec. rm., brick fireplace, large wooded lot. Short walk to sand beach. Carl Davis. No. 5.



WATERFRONT - ORR LAKE S.
 \$32,000. Nicely finished, 3 bedroom cottage, with carpet throughout, sun deck, artesian well and a sandy shoreline. Carl Davis. No. 6.

GEORGIAN BAY - DEANLEA BEACH
 \$59,900. Three year old home, full basement, 4 bdrms., deck. some finishing to be done. Good quality homes in area. Carl Davis. No. 19.

- Sales staff**
- | | |
|-------------------------|-----------------------------|
| Nancy Trowell 636-7957 | Larry Gedge 526-2388 |
| Dave Bridgeman 549-3693 | Joyce Bingley 361-2696 |
| Howard Heacock 322-1753 | Marjorie Contois 534-3634 |
| Bob Sweezie 526-3985 | Carl Davis 322-2962 |
| Paul Sauve 549-8174 | Laurie Gendron 756-2475 |
| Mary Thompson 533-3246 | Clarence Lee 361-2599 |
| Gord Touet 322-2245 | Becky Marchildon 526-3980 |
| Paul Vollick 756-2731 | Barbara Giles 538-1028 |
| Frank Wristen 534-3998 | Elmer Strongitharm 686-7960 |
| Jack Scott 361-2409 | Gary Pike 549-7696 |
| Harry Hunt 322-1998 | Bonnie O'Rourke 526-8413 |
| Vince Evenden 526-4032 | Nancy Cardwell 526-9791 |
| Patti Torrance 549-7037 | Steve France 526-7686 |
- Don Tannahill 534-3106

A.E. LePage Highway Mall
 Elmvale **322-1381**
 Highway 27 Midland **526-4271**
 Coldwater **835-3343**