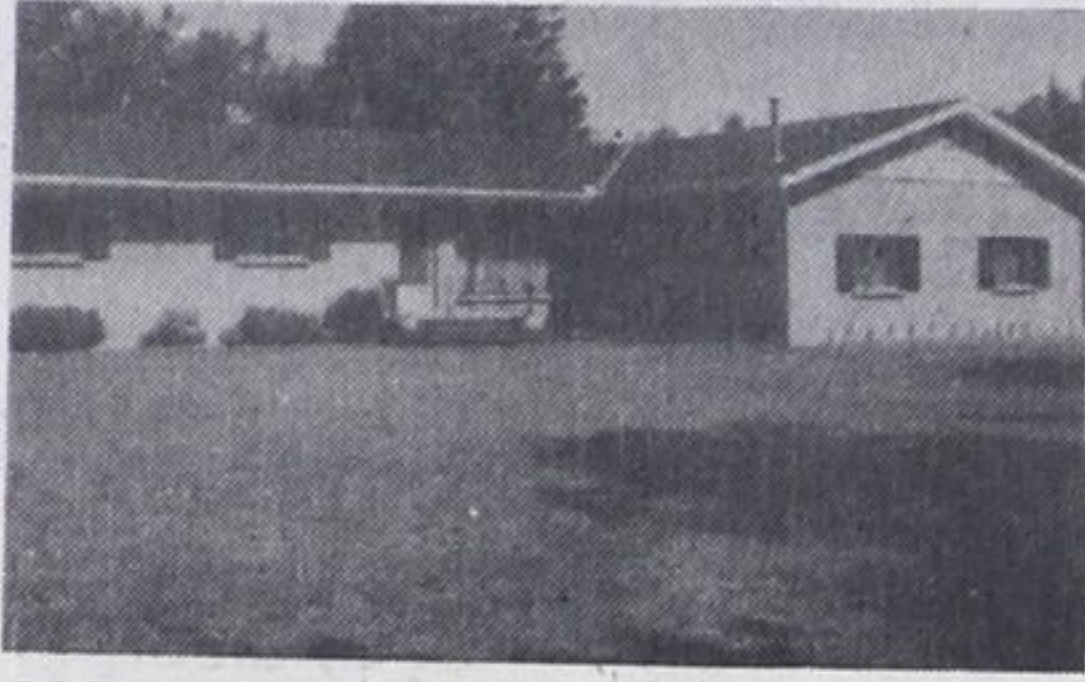


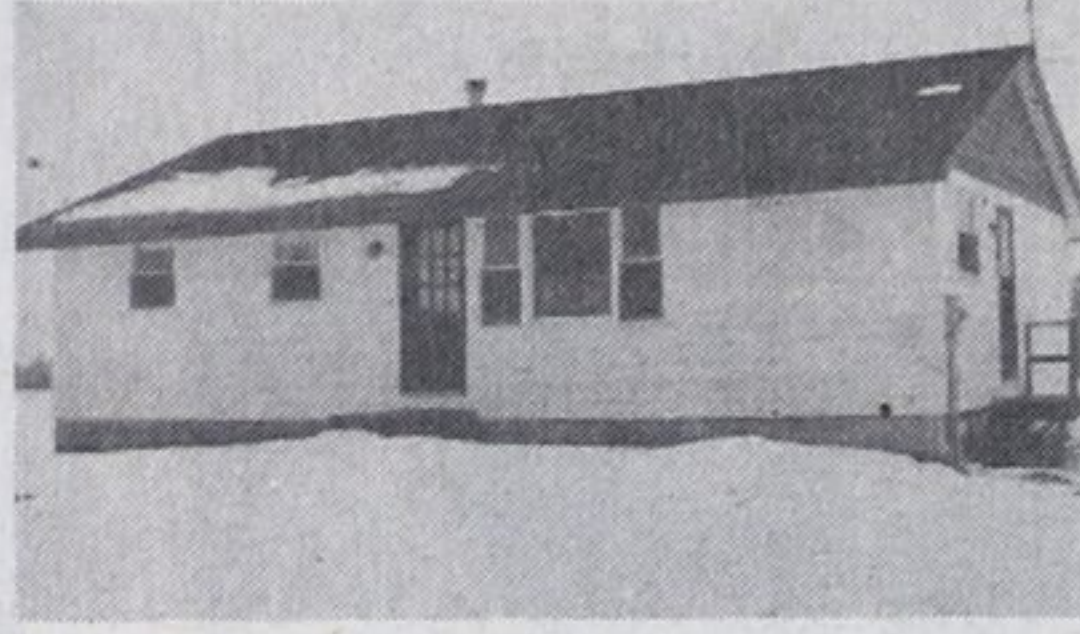
# A. E. LePAGE

(ONTARIO) LTD. REALTOR

## The name friends recommend



**CAR, LOT PLUS HOME ON 2 ACRES**  
\$139,000 — Beautiful spacious 3 bdrms, ranch-style bungalow plus paved car lot with overhead lighting, excellent location and site. Mary Thompson.



**FISHERMAN'S DELIGHT**  
\$42,900 — Modern 3 bdrms, brick and aluminum siding bungalow. Backs on Coldwater River with about 2 acres. Airtight stove. Close to shopping. Larry Gedde.



**HOME ON QUIET STREET**  
\$30,900 — Good starter home, 1 1/2 storey stucco, 4 bdrms, full basement, nicely treed backyard. Try an offer. Larry Gedde.



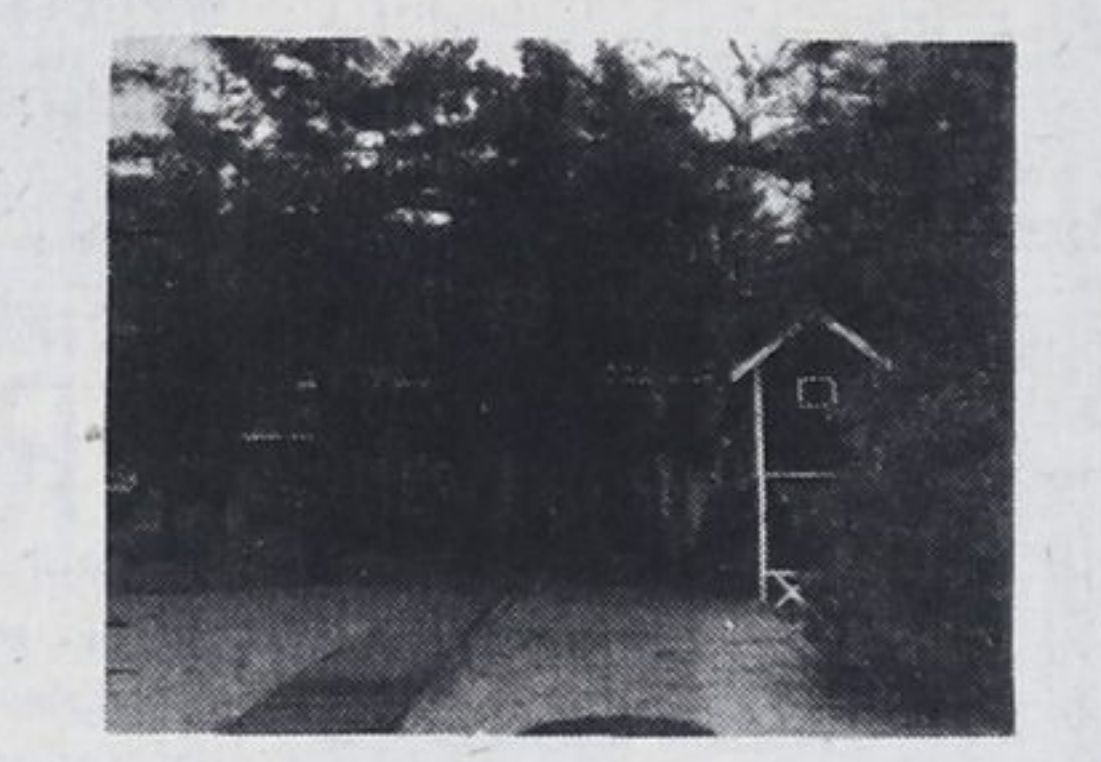
**LOOKS COLD**  
But this builders home is tight inside and out. All brick with finished basement on large lot on quiet street. Asking \$64,900. Clarence Lee.



**PRICE REDUCED! HURRY!**  
\$79,500 — Variety store with modern living quarters. Upstairs may be 2 bdrm apt. Business profits increasing each year. Call to see. Larry Gedde.



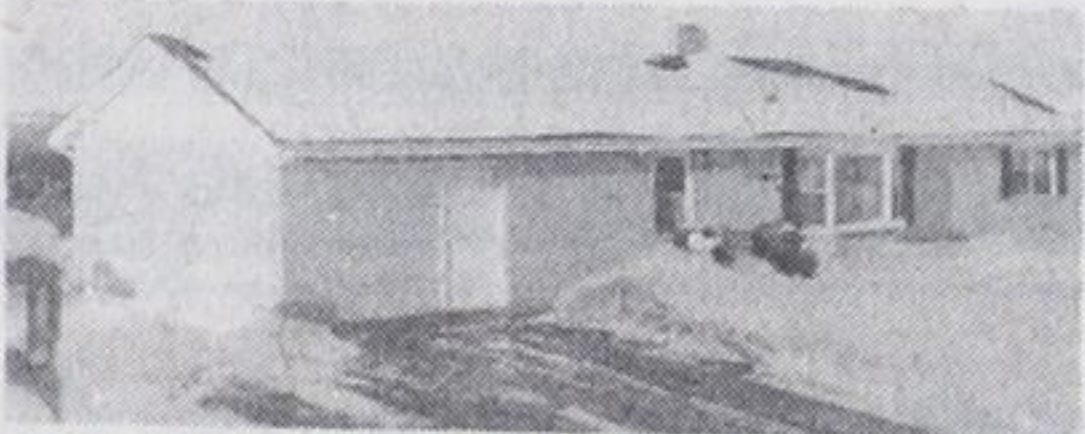
**STEPS FROM THE BEACH**  
Large 'A' frame encloses you in comfortable charm. Two fireplaces, 3 bdrms, detached heated double garage. Walk to beach. Vince Evenden.



**MOVE IN CONDITION - \$89,900**  
Private well treed waterfront, 3 bdrm home, pine decor, 2 fireplaces. Becky Marchildon.



**MODERN HOME ON 10 ACRES**  
Secluded location near sandy beach. Fully insulated with electric heat. Fireplace. Drilled well. All for \$61,900. Make your offer. Clarence Lee.



**MODERN COUNTRY LIVING**  
\$69,500 — Beautiful 4 bdrm bungalow on 1.8 acres with stocked trout pond! Full basement finished with rec. room, bar, fireplace, ask for details. Larry Gedde.



**\$39,900 - JUST REDUCED!**  
Comfortable modern bungalow near Elmvale, ideal retirement home, 3 bdrms, acorn fireplace, rec. room, attached garage, sundeck and breakfast nook. Larry Gedde.



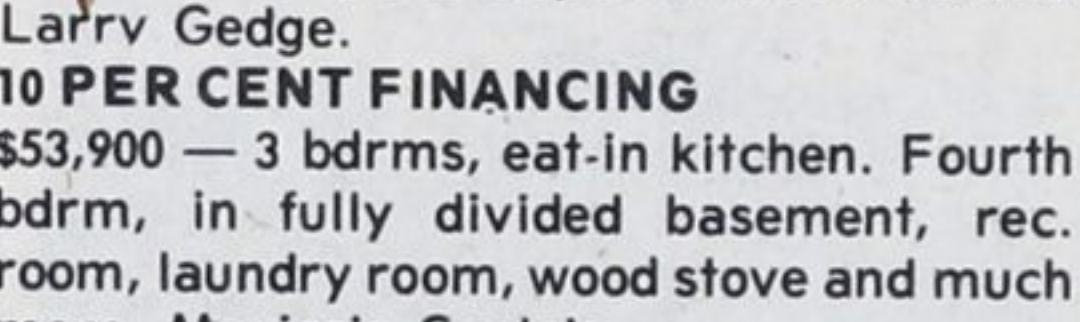
**1.4 ACRES - COMMERCIAL**  
8 rental units plus main living quarters. Instant revenue and lots of potential. Located at Balm Beach. \$145,000. Dave Bridgeman.



**VENDOR FINANCING**  
4 bedroom bungalow, plaster walls and ceilings, double car garage, full basement and large country lot. \$46,900. Dave Bridgeman.



**\$31,900 - SILVERBIRCH BEACH**  
Cozy home/cottage with room for expansion on double lot. Quiet street, direct access to beach. 10 1/2 per cent mortgaging. Mary Thompson.



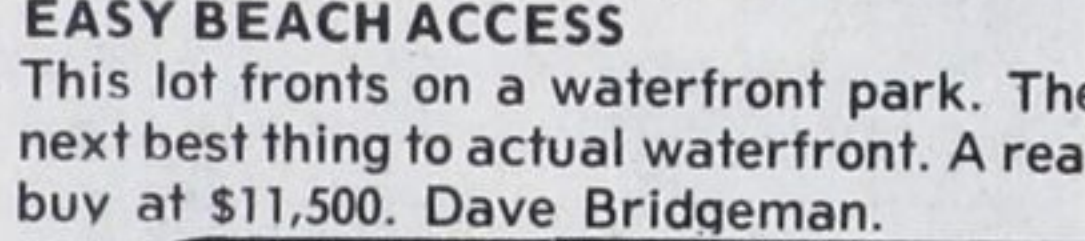
**EXCELLENT CORNER BLDG LOT**  
\$12,900 — Quiet area of Midland. Well treed with established hedge on 2 sides. Zoned for single or duplex. Ask for details. Larry Gedde.



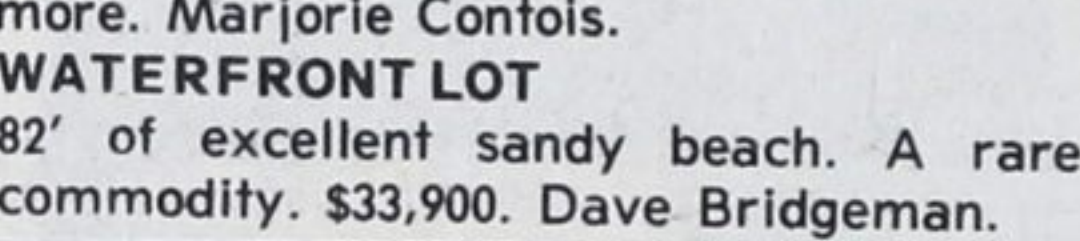
**10 PER CENT FINANCING**  
\$53,900 — 3 bdrms, eat-in kitchen. Fourth bdrm, in fully divided basement, rec. room, laundry room, wood stove and much more. Marjorie Contois.



**IMMEDIATE POSSESSION**  
\$58,500 — Home with over 5 bdrms. For large family or income potential. Located in good area 1 mile from Midland. Becky Marchildon.



**EASY BEACH ACCESS**  
This lot fronts on a waterfront park. The next best thing to actual waterfront. A real buy at \$11,500. Dave Bridgeman.



**WATERFRONT LOT**  
82' of excellent sandy beach. A rare commodity. \$33,900. Dave Bridgeman.



**SOLID LOG HOMES**  
2 left, ready for the handyman to finish, situated on treed lots that back onto a waterfront park, make an offer. Dave Bridgeman.

**\$29,900 - EXCELLENT SITE**  
1 1/2 storey home with 2 bdrms, fine view of bay. Lot is 308 feet deep. Zoning permits duplex on this prime location. Call to see. Larry Gedde.

## BUSINESS SECTION



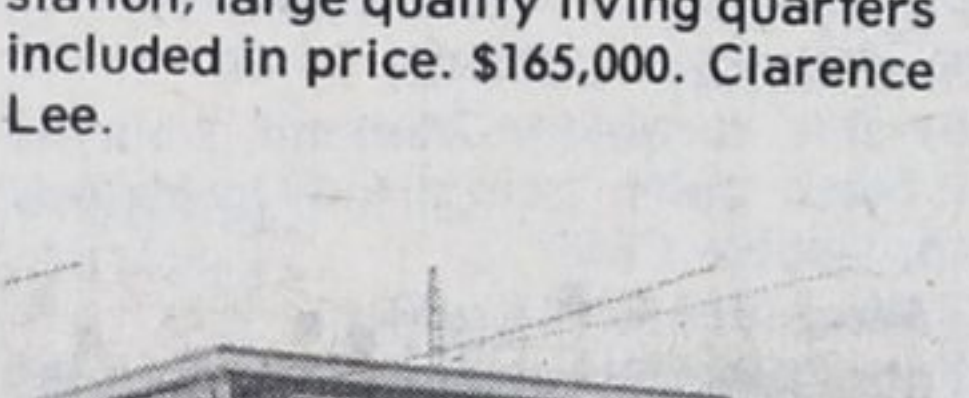
**BUSINESS OPPORTUNITY**  
\$92,500 — 10,000 sq. ft building, 4 acres. Midland. Several possibilities with rental space now available. Becky Marchildon.



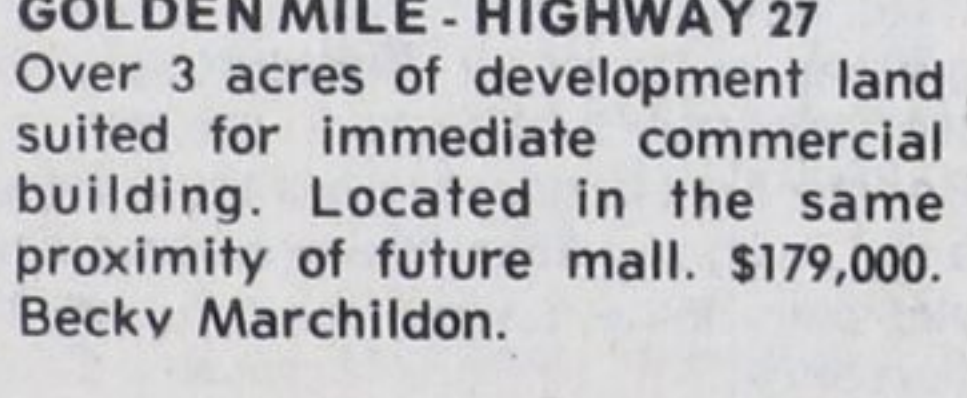
**WANTED AMBITIOUS FAMILY**  
To take over high volume country convenience store, garage, gas station, large quality living quarters included in price. \$165,000. Clarence Lee.



**GOLDEN MILE - HIGHWAY 27**  
Over 3 acres of development land suited for immediate commercial building. Located in the same proximity of future mall. \$179,000. Becky Marchildon.



**GROCERY STORE AND GAS BAR**  
\$149,000 — Thriving business, gross over \$250,000, 3 bdrms, living quarters, modern concrete block buildings, paved parking area. Main highway location in small village. Frank Wristen.



**INDUSTRIAL BUILDING**  
7,400 sq. ft suited for woodwork manufacturer or storage. Immediate possession. Near bay, fully serviced, extra lot available. \$175,000. Becky Marchildon.

**GEORGIAN SANDS**  
Chalet style, 3 bdrm cottage with full basement. Vendor will finance. Asking \$39,900. Dave Bridgeman.

**\$16,500 - WILL BUY THIS WINTERIZED COTTAGE**  
Fenced yard, newly decorated, furnished, plus two storage sheds. Vendor financing. Dave Bridgeman.

**WALKING DISTANCE TO DOWNTOWN SHOPPING!**  
3 bdrms, eat-in kitchen, living room with fireplace, asking price \$31,900. Full basement. Debbie Cote.

**\$19,900 - ACREAGE**  
Ready for building, close to Midland on well serviced road. 5 acres with 208 ft frontage. Becky Marchildon.

### Sales staff

Nancy Trowell	636-7957	Larry Gedde	526-2388
Dave Bridgeman	549-3693	Joyce Bingley	361-2696
Howard Heacock	322-1753	Marjorie Contois	534-3634
Bob Sweezy	526-3985	Debbie Cote	526-5553
Paul Sauve	549-8174	Carl Davis	322-2962
Mary Thompson	533-3246	Laurie Gendron	756-2475
Gord Touet	322-2245	Clarence Lee	361-2599
Paul Vollick	756-2731	Becky Marchildon	526-3980
Frank Wristen	534-3998	Barbara Giles	538-1028
Jack Scott	361-2409	Elmer Strongitharm	686-7960
Harry Hunt	322-1998	Gary Pike	549-7696
Vince Evenden	526-4032	Bonnie O'Rourke	526-8413
Patti Torrance	526-7983	Nancy Cardwell	526-9791
	Don Tannahill	534-3106	

## A.E. LePage Highway Mall

Highway 27 Midland **526-4271**

Elmvale **322-1381**

Coldwater **835-3343**