

# Bingo enjoyed by residents

by Vicki Hinnells  
 "Bingo!" "Hold your cards please," Shirley Rubv instructs. Grace Fox checks the lucky winners' card and pays the prize. "Clear your cards. Next game, one line or four corners." For the past five or six years, Shirley Ruby, Grace Fox, Maé

Hacker, Mary McMann and Emma Duval, have provided the Residents of Georgian Manor, with a regular Monday afternoon of Bingo.

Their jobs include setting up the room, calling numbers, checking cards, playing along with those needing help, and preparing and serving tea and coffee.

"We charge 10 cents a card or three for a quarter," says Shirley. "Our prizes of 15 cents, a quarter or so, are given for each game we play. A jackpot prize is given for a full card. Most of the monies paid are given back in winnings and any left over is donated to the Craft Fund."

No one enjoys Bingo more than the residents of Georgian Manor. Their sentiments are echoed by Resident, Mrs. Stevenson, who reminds me each week, "You know, I just love Bingo. I can't wait for Monday!"

Mrs. Stevenson is one of 25 players, who come down to the Senior Citizen Room for Bingo. Cards are carefully checked for double-digit numbers, 75 in the upper right hand corner or lower corner, and many more lucky markings.

Some play one card and others as many as six at one time. Mrs. Gilbert, a loyal patron of the Monday Bingo, played five of her own cards last week, as well as checked the card of another Resident who needed help! Yes it's serious business, being

a Bingo player! Enjoyed almost equally as well, is the Tea-time, afterwards. Winners display their earnings, others, just how close they came, but more important, a social time of fun, conversation and friends, is enjoyed by all.

The work of our volunteer ladies cannot be taken for granted. On one occasion, the ladies were not able to come. I decided to undertake the job myself, with one helper. Certainly it couldn't be too difficult! Well! After calling, running to tables, passing money, serving cookies and tea and tidying up, I left for home totally exhausted. The ladies have a most efficient system,

along with a natural and beautiful rapport with our Residents.

Bingo. A simple and uncomplicated activity? NEVER! Join us one Monday and see for yourself.

We at the Manor, are presently trying to form a Home Auxilliary. We are looking for interested ladies and gentlemen, who are

willing to assist in adding to the enjoyment of our Residents, in any capacity.

If you would like a share in a most enriching Senior experience, please plan on attending an informal meeting at Georgian Manor, Monday, March 2, 1981, at 7 p.m. in the Library. And, please, bring a friend!

## Stats tell the story

CONTACT  
526-9333

The staff of Contact have been very busy during the month of January. It's statistics collection time again.

The total number of incoming calls for 1980 was 7,325; this does not include the 820 calls that were made as follow-ups or research requests which involves so much of Contact's time.

Some of the readers of this column may not realize the many facets of Contact and how it works.

Contact Telephone Information and Referral Centre is a chartered non-profit registered organization with a volunteer Board of Directors numbering 12 in all. The centre opened its doors on March 12, 1973 and has expanded its resources and services over the past 7 1/4 years to include many services for the community.

Contact plays a catalytic, supportive role in the communities of Huronia, bringing people and services together. The calls range from simple information calls to critical situations. Social services, government agencies, clergy, service clubs and many volunteer individuals respond to and work together for the good of many people upon the request from Contact. Contact receives an average of 625 calls a month with 90 percent of the calls reaching a satisfactory conclusion.

The following is a list of services Contact provides:-

1. Information and referral.
2. Meals-on-Wheels co-ordination.
3. Social Service meetings.
4. Co-ordination for Welfare assistance.
5. Ongoing work with families in the area of Social Services.
6. Senior Citizens assistance (visits and activities).
7. Housing (rental assistance, Rent Review, Landlord and Tenant legislation).
8. Odd Jobs register.
9. Babysitting register.
10. Daycare register.
11. Supportive assistance to all worthwhile needs or projects.
12. Working with resource people in giving support to individuals or families.
13. Befriending (a confidential voice someone to listen and then suggest alternatives).
14. Register file of upcoming events.
15. Consumer education.
16. Consumer information and referral and advice.
17. Consumer mediation.
18. Cancer Society answering service.
19. Community work orders.
20. Publishes Community Directory.
21. Identifying unmet needs.

Contact provides direct assistance to each client and since Contact is a community oriented organization the staff and volunteers are familiar with local problems and can offer a more personalized service which is most important since the area Contact serves has few government services. All calls are followed up to assure the information given to a client was correct and satisfactory.

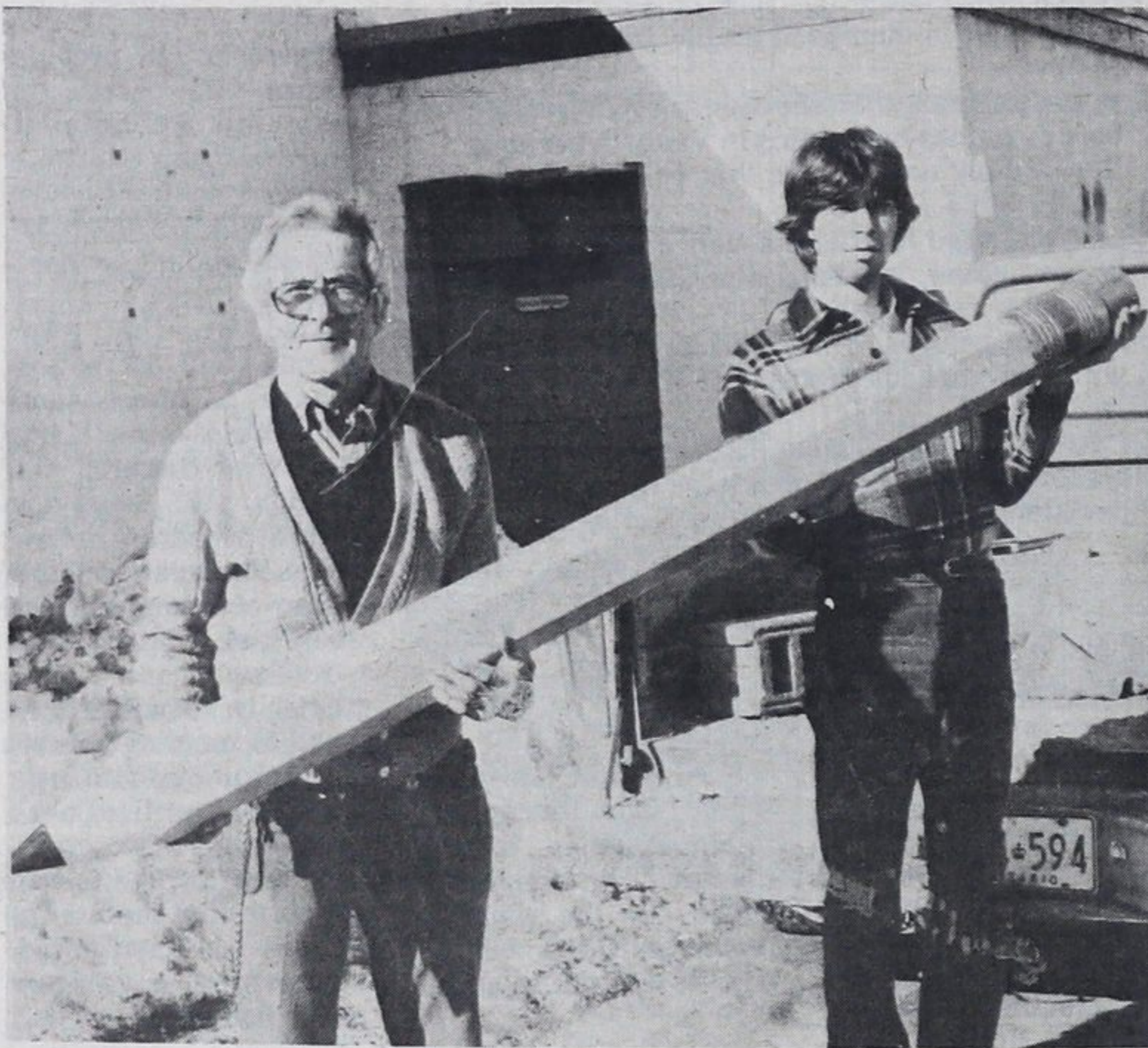
The geographical area served by Contact Telephone Information and Referral Centre ksu Midland and its surrounding communities which includes Penetanguishene, Port McNicoll, Victoria Harbour, Waubaushene, Lafontaine, Wyevale, Wyebridge, Elmvale, Waverley and the Tiny-Tay Peninsula which make up a population of approximately 32,000.

The Midland and District Ability Association are holding a social afternoon on Wednesday, Feb. 4 from 2 p.m. - 4 p.m. at St. Paul's United Church. All interested people are invited to attend this friendly get together of the physically handicapped.

The Wye Marsh Wildlife Centre is holding a Winter Open House on Saturday and Sunday, Feb. 21 and 22 from 10 a.m. to 4 p.m. Snow shoes will be on loan or you may ski with the naturalist guides on the trails or just visit the winter nature displays and slide shows. Bring the entire family for some winter fun and it's all FREE.

Happiness is helping people to help themselves.

Mary M. Gibson,  
Administrator.



### Giant size

Midland sculptor Frank Shulman, left, designed this seven foot pencil for HOS. Thanks to Christopher Moreau, right, and Marshall Laurin who

initially shaped the pencil, Shulman's creation was loaded into a pick-up truck last Friday for delivery.

### Phelpston Fun Day set for Sunday

The residents of the hamlet of Phelpston are gearing up for their annual Fun Day and activities have been planned for this Sunday, Feb. 8 for the entire day.

The Phelpston Rink will be the centre of attraction this week-end as minor hockey, oldtimers hockey, races and pleasure skating form much of the fun slated for the one-day event. All action gets underway at noon.



Here's  
Something New

THIS AD  
WORTH  
\$2.00

•Daily Luncheon Special

•Daily full course Dinner Special under 6.00

Anniversary or Birthday? Just let us know... We'll arrange for a cake with our compliments.

•Open 7 days a week for lunch and dinner  
Daily 11:30 to 10 p.m.

•Bring this ad for 2.00 off any meal over 6.00  
Offer expires February 13, 1981

**BAVARIAN HOUSE**  
OF MIDLAND

Two miles past Martyrs' Shrine coming from Midland on Conc. 4 off Hwy 12  
Reservations appreciated.  
534-3202



### Clarke back on feet again

Todd Clarke of Port McNicoll is home and recovering quite well according to his mother.

Clarke who played most of this hockey season with Penetanguishene Kings and then joined Midland Centennials recently was taken to Toronto General Hospital several weeks ago for an emergency operation made necessary by an aneurism.

An aneurism is an abnormal enlarging of an artery in the cranial area.

Clarke pulled through the operation remarkably well and

has now been sent home to recuperate under his family's guidance.

Clarke is reportedly moving about the house on a cane and is alert although he sleeps a lot at this time.

Clarke is keeping up on reports of how Midland Centennials and Penetanguishene Kings are doing in the playoffs and he hopes to attend a game if he is able to before the series is over.

We wish Clarke a speedy recovery and hope to see him out at the arena soon as a spectator.

## CORRECTION

We would like to apologize for an advertisement which appeared in our papers February 4, 1981 regarding **Jasons Ltd., Huronia Mall.**

Please note that the 20 per cent reduction on yarns does not apply for the week beginning February 2, 1981.

We apologize for any inconvenience this may have caused.

# Watson's Studio and Camera Shop

**CLOSE-OUT SALE UNTIL FEB. 28th**

**EVERYTHING MUST GO**

# SOLD

Cameras, Projectors, Albums, Frames, Binoculars, accessories.

### Photofinishing-Important

All finishing and photographic orders in stock over 30 days will be destroyed. **Think about that.**

Budd Watson Photography will be expanded and will continue to serve the people of Midland from our new location at **520 Hugel Avenue.**

"Thank you for your much appreciated patronage the past 44 years, 9 months" Lorne and Budd Watson.