

Classified

Midland 526-2283
Penetang 549-2012
Elmvale 322-1871

SERVICES FOR SALE CARS & TRUCKS REAL ESTATE REAL ESTATE REAL ESTATE REAL ESTATE

Hoof Trimming Service, custom dehorning and clipping. Call Thomas Gignac - 705-835-5551. R.R. 1, Midland. 4, 6, 8

Snow Removal
From roofs of home and cottages in the Midland, Penetanguishene, Collingwood and Barrie areas.
Phone: 1-705-526-8128 after 6 p.m. 5-6-7

When the time comes in your family

There is one man you should see and rely upon, the man in your community allowed to sell the most respected name in monuments, the world over...

SANDERSON
Michael J. Stone 322-2732 Elmvalle
Julien Beausoleil 84 Poyntz St. Penetanguishene
Frank Doherty District Sales Manager 526-2924 Midland W9TF

WANTED
Farm wanted - Willing to pay \$5,000 to \$8,000 per year with lease plus option to purchase. Phone 526-6834. 1-TF

Room or room and board, gentleman preferred. Reasonable rates. Call 526-7498. 4-5-6

Wanted - a friendly person to visit and read to a senior citizen in a Midland Nursing Home, two hours a week. Please write to Elmvalle Lance, Box 339 A, Elmvalle, Ontario. LOL 1P0, giving personal details and qualifications. 6

FARMER'S MARKET
For sale - 1 Holstein heifer, due January 25. Phone 526-2392. 6

FOR SALE
Ski-Doo 1972 Nordic 440, asking \$595.00. Phone 322-2485. 6

Electric reducing machine, beauty salon hydraulic styling chair, hair steamer almost new, an oak desk, miscellaneous. Call 526-2979. 6-7

26-inch colour console TV and converter, good condition. Phone 526-2102. 6

1 pony, 1 saddle, 1 cart, 1 sleigh, 322-1028. 4, 6

TV Antennas, 4 section of tower, channel master rotor, UHF, VHF, 8290 antenna, complete installed \$450, also repairs all season. Call James Woods - 322-1880. 2, 4, 6, 8, 10, 12

1972 30 h.p. Moto-Ski, 1973 30 h.p. Johnson, electric. Both in excellent condition. Low mileage. Call 835-2024 after 4:00. 2, 4, 6

10 speed bike, boys 10 speed bike, silver, 1 year old, \$75.00. Call 526-5094 after 5:00. 5, 6

Renovated school, 3 bedrooms, living room, kitchen and bath. Large workshop, garage 24 x 30'. \$32,500 or best offer, or will rent. Phone 534-7578. 4, 6, 8

1 KPX 600 Pioneer, Cassette F.M. under dash. Stereo unit with one 40 watt main amplifier. 549-2508. 4-5-6

Skates, boys size 5skates, suit 10-12 year olds, moulded boot, hardly used. Call 526-5094 after 5. 5, 6

LOT FOR SALE - 3 acre estate sale residential building lot, located beside Wye River, rural setting, nice location. Located 2 miles south of Wyevale on County Road 6, 10 miles south of Midland. (Tiny Beaches sideroad). Asking \$20,000. Mortgage possible at competitive rates also will build to suit. For more information call 322-1841 after 9:00, 429-5630, 8 to 5 days. W4 to W18

1,200 bales, excellent quality straw. Call 322-1998. 6

18 - 4 ft fluorescent lights with grow lamps. Ideal for indoor plants. Cost \$50. Asking \$25. Call 538-1296. 6

1976 Chevy Nova SS, 305, V-8, certified. Phone 549-8108. 6-7-8

One steam jenny, 15 watt generator, for sale. 322-1353. 6

Honey - Unpasteurized clover and buck wheat in all size containers, excellent flavour, reasonable prices. 26 years in business. Call 835-2308, Hillsdale, closed Sundays. 6, 8, 10, 12

ML POOLS & SPAS MAUR-LAC LTD.

- Swimming Pools
- Hot Tubs
- Whirlpools and Spas
- Pool Services
- Chemicals
- Landscaping

RR1, Perkinsfield, Ont. **JOHN LACKIE** 549-8564 33TF

CARS & TRUCKS
1975 Ford LTD wagon, certified. Asking \$2250. Call 538-1296. 6

1977 Chrysler New Yorker Brougham. Loaded. Will accept trade on older car or truck. Phone 533-3226. 6-7

1977 - F150 Super Cab, very good condition, \$4,695. 1975 T-Bird, beautiful condition. Phone 549-3692. 6-7

1975 Trans Am. Asking \$3800. Phone 534-3935. 6

BOATS & MOTORS
Immaculate 1980 Tempest SS-180 with 120 O.M.C. stern drive, select trim and tilt, 25 hours running, full instrumentation, stereo, swim ladder. Loaded with options, full factory warranty. Inside storage until Spring. \$7800. Call 538-2975, 9 to 5, 538-1014 after 5. 6-7

SNOWMOBILES
1976 Evinrude "Skimmer" 650 S.S. Electric, track and engine, good condition. \$750.00. Phone 526-6481, 549-3665 after 5. 4-5-6

1979 Ski-Doo Blizzard 5500. Asking \$1500. Call 538-1296. 6

FOR RENT
Why mess up your house, rent the Wyevale Orange Centre for your party, dance or other functions. Call 322-2647 for rates. 11TF

3 bedroom home, north of Elmvalle. \$275 per month, plus utilities. Call 737-1836. 4, 6

Apt for rent, 1 bedroom apt., self contained, adults only. Call 322-1171 or 322-2364. W4 to W14

4 bedroom farm house. Fridge, stove and some furniture. Concession 1, Tay, \$200 plus utilities. Call 526-6694. 6

Wasaga Beach two bedroom house for rent, available February 1, 1981 with garage and basement. Call 835-2845. 6, 8

Modern bedsitting room near downtown. Transit in front of door. Available Jan. 23, 1981, \$40 per week. Call 526-4009 after 5:30 p.m. 6-7

2 bedroom house, 1-car garage, \$240 per month plus utilities. No pets. Available February 1, at Wanekewening Beach. Phone 533-2434. 6-7-8

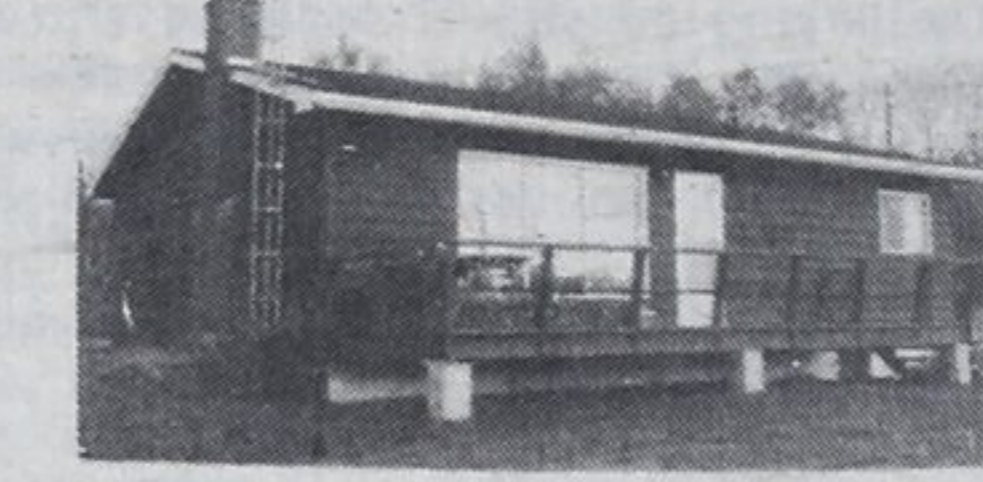
Modern 2 bedroom apartment in Port McNicoll, \$220 per month, includes all utilities. First and last months' rent. Immediate possession. Call 534-7768 or 526-7656. 6 to 13

2 bedroom winterized cottage, heat and hydro included, at Balm Beach. \$225 monthly, first and last months' rent. 526-3507. 6-7

Spacious 2 bedroom apartment, Dominion Ave. References. First and last months' rent, \$275 monthly. 526-9840 before 4. 6

Furnished apartment, 1 bedroom, country setting off Hwy. 93, near Waverley. All utilities included with other extras. Phone 549-7326. 6 to 9

A. E. LePAGE
(ONTARIO) LTD. REALTOR



40 ACRES SURROUND HOME
\$51,500 - Fieldstone fireplace enhances large living room in Tay Township. \$7,500 down with 11 1/2 per cent first mortgage. Bob Sweezie.



SERVICES ENTIRE VILLAGE
\$49,000 - Post office, variety store and hairdressing. Hwy. 27, great future potential. Marjorie Contois.



PRIDE OF POSSESSION
Will be yours in this lovely older home with everything updated except the original trim, decor, and quiet atmosphere. Only \$77,900. Clarence Lee.

SANDY WATERFRONT LOT
\$36,900 - Ample room for your dream cottage on 82' x 255' site. Western sunsets par excellence. Bob Sweezie.
10 PER CENT MORTGAGE
\$34,875 - 2 storey frame duplex in Midland. Could rent for over \$400 monthly. 50' x 200' lot. Bob Sweezie.

5 YEAR OLD - 11 PER CENT MORTGAGE
400 ft to beach, \$35,500. Eat-in kitchen, 3 bdrms, large deck. Landscaped. Peek-A-Boo Trail. Marjorie Contois.

\$31,900 - MIDLAND!
This home is a pleasure to view with lovely pine flooring and fireplace in living room and feature is vendor will consider holding a mortgage. Debbie Cote.

\$29,900! PEEK-A-BOO TRAIL!
3 bedrooms, L-shaped living room, kitchen, Franklin fireplace, furniture included. Debbie Cote.

\$44,900! JUST LISTED
Midland triplex, close to downtown on quiet street, fireplace in large 3 bedroom apt. Debbie Cote.

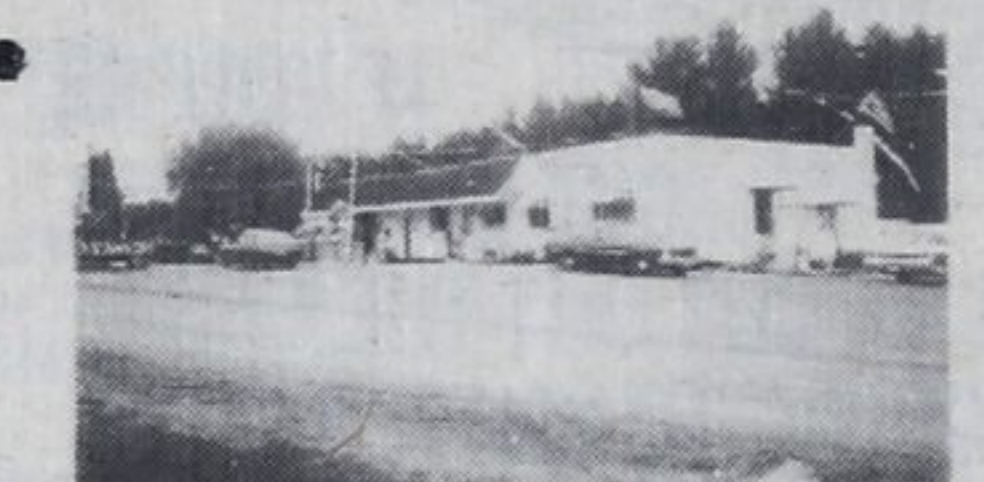
\$58,500! MIDLAND BUNGALOW
3 bedrooms, family room with fireplace, rec. room, heated swimming pool, lovely home. Debbie Cote.

Sales staff

Nancy Trowell	636-7957	Larry Gedge	526-2388
Dave Bridgeman	549-3693	Joyce Bingley	361-2696
Howard Heacock	322-1753	Marjorie Contois	534-3634
Bob Sweezie	526-3985	Debbie Cote	526-5553
Don Tannahill	534-3106	Carl Davis	322-2962
Mary Thompson	533-3246	Laurie Gendron	756-2475
Gord Touet	322-2245	Clarence Lee	361-2599
Paul Vollick	756-2731	Becky Marchildon	526-3980
Frank Wristen	534-3998	Barbara Giles	538-1028
Jack Scott	361-2409	Elmer Strongitharm	686-7960
Harry Hunt	322-1998		

A.E. LePage Highway Mall
Highway 27, Midland 526-4271
Coldwater 835-3343 Elmvalle 322-1381

We'll help make it easy



WANTED! AMBITIOUS FAMILY
To take over high volume country convenience store, garage, and gas station. Large quality living quarters included in price. \$165,000. Clarence Lee.



FOR THE PARTICULAR BUYER
Centrally located, quality built home on large landscaped lot, asking \$64,900. See it and bid. Clarence Lee.

\$37,900 - INCOME PROPERTY!
Furnished 1 bedroom apt and main floor 2 bedroom apt. Vendor will beat high interest rates by holding a mortgage. Debbie Cote.

ROOM FOR GROWING FAMILY
\$46,900 - 4 big bdrms, kitchen and breakfast area looks out on 46 ft inground pool. Full basement, divided. 7 per cent mortgage. Frank Wristen.

REDUCED TO \$33,900 ASKING PRICE!
Double lot 121 x 200', located in prestigious area of Midland, vendor will hold a mortgage, great opportunity as interest rate rise! Debbie Cote.

MIDLAND EAST, TWIN BUNGALOW
\$35,900 - Spotless, well decorated bungalow, deep lot, full part finished basement. 10% per cent mortgage, \$4500 down, carries \$308 monthly. Frank Wristen.

BACKSPLIT - PORT MCNICOLL
\$43,900 - Immaculate 3 bdrm with family room, Franklin fireplace, single garage, patio and built-in barbecue. Frank Wristen.

\$69,900! PENETANG
Approximately 6 acres, close to main street, great for future investment. Debbie Cote.

\$53,900 - 3 BDRM SIDESPLIT
Eat-in kitchen, family room with brick fireplace, full basement, fully sodded. New subdivision, east end of town. Call today. \$29,900 - MIDLAND HOME!

3 bedrooms, great investment for the handyman, full basement, quiet street. Debbie Cote.
3 BDRM BUNGALOW - TRIPLE BAY
\$45,900 - Large rec. room with Fisher stove, walkout basement, water access. Marjorie Contois.

\$20,900! 3 BEDROOM HOME!
Located at Victoria Harbour in central area, low on price, big on value. Debbie Cote.

SIXTH ST., BUNGALOW
\$40,000 - 3 bdrms, newer home, full basement, attached garage, near schools. Marjorie Contois.