

SNOWMOBILES	FOR RENT	FOR RENT	FOR RENT
1974 Sno-Jet, 340 twin, excellent condition, \$550. Phone 526-7103. 93-94	Two bedroom cottage at Daust Bay. Phone 361-2011. 94	Office Space For Rent 920 square feet suitable For professional office • Completely furnished • Carpeted • Air conditioned	
Ski-Doo TNT 340, like new condition, \$850 firm. Phone 526-9763. 93-94	2 bedroom cottage \$190 monthly plus utilities, at Balm Beach. Available Dec. 1. Call 361-1391. 94	VILLAGE SQUARE MALL, Poyntz Street, Penetang Inquire: 549-8781 416-889-3835	91, 92, 93, 94
WANTED TO RENT Garage, heated if possible, for winter months. 549-2823. 94-95	2 bedroom apartment, carpeted throughout, walkout to patio, washing facilities. Available Jan. 15, 1981. Port McNicoll, 534-7660 after 5:30 p.m. 93-94	Farm for rent or for sale, 5th Concession Tay, 74 acres, house, barn, shed, \$330 per month. Call 526-3765. 92 to 99	Two bedroom house, fridge and stove supplied, carpet throughout, freshly painted. Between Waubaushene and Port Severn. Phone 538-2011 or 756-8046. 93-94
FOR RENT Why mess up your house, rent the Wyevale Orange Centre for your party, dance or other functions. Call 322-2647 for rates. 11TF	Two bedroom house, garage, Wahnekewening Beach, \$230 per month plus utilities. Available immediately. Call 533-2434. 93-94-95	3 bedroom modular home in Bramhall Park. Four appliances, drapes and broadloom, \$265 monthly plus utilities, 526-7029. 89 to 96	REAL ESTATE Midland, small two storey, 3 bedroom home, near hospital, \$38,000. Call 526-6257. 94
Newly renovated 1 bedroom apartment in Elmvale. Electric heat and carpet throughout. Call W.C. Player Real Estate Broker - 322-1991. 93-94-95	1 bedroom apt main floor. Own entrance. Elderly person preferred. Fridge, stove, T.V. cable and heat included. No pets. Available Dec. 1st. 549-7266. 93-94	REAL ESTATE	
Modern bed sitting room, \$40 per week. Call 526-4009 after 6 p.m. 92-93-94			

REAL ESTATE

A. E. LePAGE
ONTARIO LTD. - REALTOR



\$59,500.00
200' x 200' scenic site, 10 per cent mortgage, brick fireplace, electric heating, Waverley area. Carl Davis. A.E. LePage (Ontario) Ltd., Elmvale 322-1381 or evenings 322-2962.

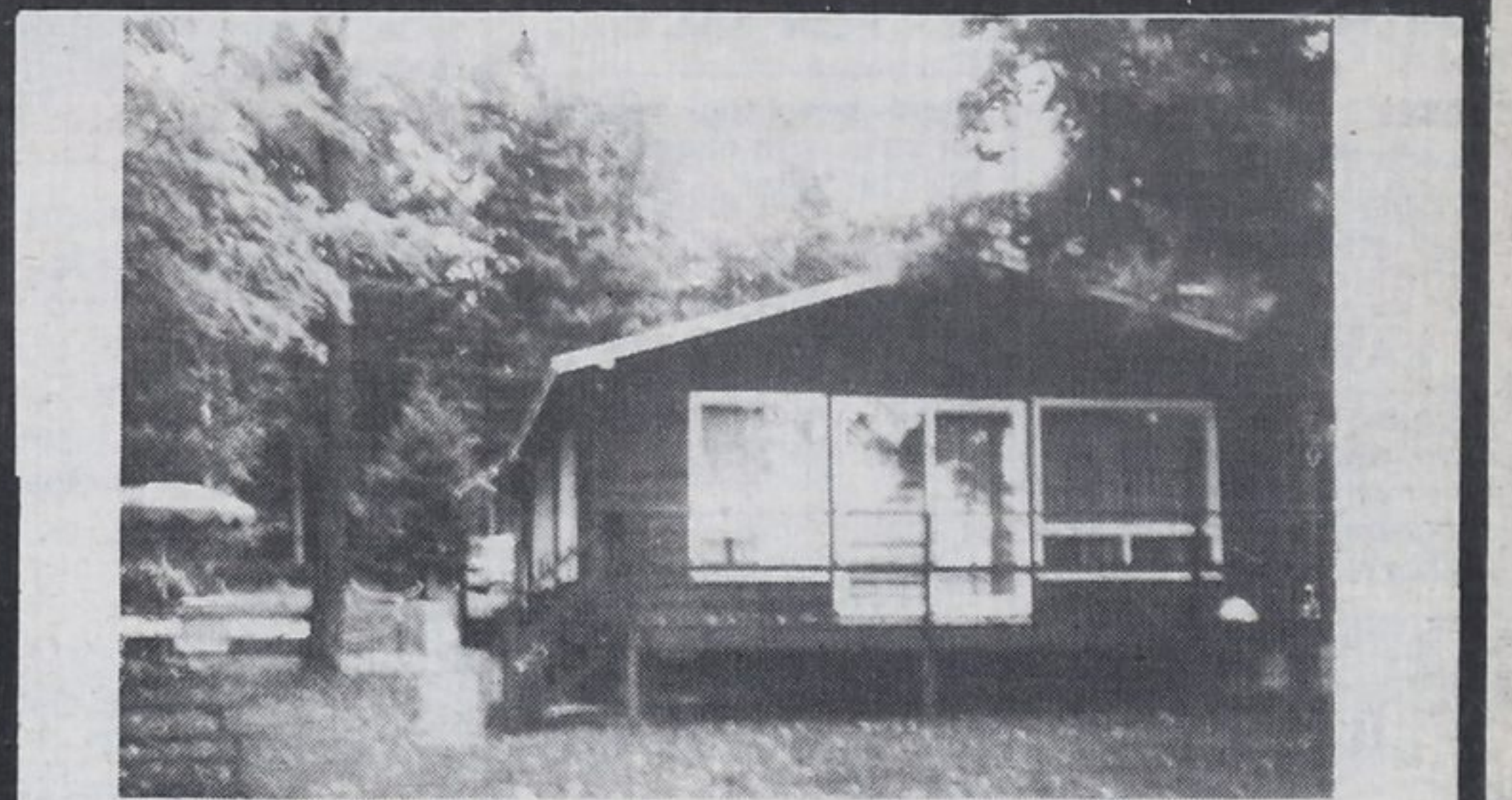
REAL ESTATE

D.L. Charlebois Real Estate



Leonard Ave. 7 room home, completely renovated, new wiring, plumbing, kitchen and bathroom, carpeting throughout. 63½ ft. lot. \$37,900.
Call 549-7451

BRYSON McQuirter
LIMITED REALTOR
SOLD
SINCE 1960



4 SEASONS CHALET
MLS-858 — Comes complete with top quality furniture and appliances, very, very well decorated interior. Excellent view of Harbour. Just like owning a waterfront property. Close to Penetang. Perfect area for boating, swimming and fishing. All for \$59,500. Ask for Harry Hagedorn.

A CHANGE FROM THE ORDINARY
Gorgeous large lot home is situated on treed 10 acre lot on outskirts of town. Think of this one as an investment for the future. Ask for Ron Hamelin.

VIEW PENETANG BAY
From this well decorated cozy home, interior offers comfort with recently rugged floors and wood stove to cut the cost of heating. Taxes are affordable. Now only \$35,500.

PINE SHORE ESTATE HOMES
We're very excited about these two new custom built homes. The attractive exterior and super interior design will thrill you too. Drop in and make an appointment to view. Ask for Ron Hamelin.

195 ACRES PLUS HOME AND BARN
Some equipment included with sale home needs attention, has two barns, owner will finance 80 per cent. For details, call Harry Hagedorn.

FANTASTIC HOME AND HARDWOOD BUSH
Yes this custom built home boasts extra large rooms, full basement, Florida room, eat-in kitchen, nice "very Nice" and may we mention the 21 acres with excellent hardwood bush (an investment in it's own). Call Ron Hamelin for details.

FOR THE FAMILY THAT CARES
Spacious brick bungalow, low maintenance cost. Attached garage, family room with special care to decorating, stone fireplace in very roomy living room, eat-in kitchen. All this for an asking price of \$62,900. Ask for Henry Light.


YOUR OFFER MAY BE ACCEPTED
If you are burdened with high rent or mortgage payment that are too much for you, check this income home you may be able to live scot free while the other apartments pay the mortgage payments, taxes, fuel, etc. It's worth a look. Call Henry Light.

LOTS & ACREAGES
WATERFRONT LOTS
Beautiful Giants Tom, 1 and 2 acres, sandy beach lots available for a low price between \$9,000 and \$15,000.
5 ACRES - GIANT'S TOMB
Wood lot, 487' shoreline. Asking \$33,000.
5 ACRES - PENETANG
With home, ideal subdivision potential.

OSOSSANE COTTAGE SPECIAL
All renovated exterior on level lot with garage, furnishings and all. Less than thirty thousand. See Henry Light.
A SUMMER RESORT? TRAILERSITES
93 acres bordering beautiful south bay shores just east of Honey Harbour. 25 registered trailer sites with plenty of room for more. Lovely cedar chalet overlooking 1,320 ft of shoreline, has a real future potential. Asking \$142,000. Lets talk. Call Henry Light.
A SUPER SPECIAL HOME FOR YOU
Little traffic on dead end road. This extra fine large home has all the plusses, 4 bdrms with ensuite bath off master bedroom. Extra large dining room with patio doors. Yes hold your parties in the ground level rec. room, play ping pong in the games room, father can enjoy the workshop. Protect your two cars in the double garage and the yard offers plenty of space for that swimming pool and large garden. All this for \$79,000. Make a bid for this one. Call Henry Light.

4 Robert St.W. PENETANG
Evening and Sunday Please Call **549-3104**
Open - 9 a.m. - 5 p.m. Mon. - Sat.
Henry Light 549-8845
Ron Hamelin 549-8834 Harry Hagedorn 549-8248
If you're interested in joining THE TEAM OF THE 80's, please call Bryson McQuirter Jr.

SEVERN SOUND
midland REALTY LTD. REALTOR



VIEW OF BAY
Duplex showing good income, could easily be converted to single family dwelling. Try an offer. Asking \$31,900.

- CENTRAL LOCATION**
2 storey, 2 bedrooms, 4 pc. baths, close to downtown. Completely renovated inside. \$28,500.
- \$18,200**
Lovely clean mobile home in nice area of Smith's Camp. All appliances included in this low price.
- NINTH ST.**
Reduced in price. Roomy 3 bedroom bungalow with garage. Immaculate condition. Just move in. Call today.
- WATERFRONT**
Beautiful setting for year round living in this lovely year round, 2 bdrm home. Double garage. Many extras.
- COUNTRY LIVING**
3 bedroom brick bungalow, large sunken living room, with fireplace, walkout to 4½ acres Medonte Hills.
- SANDY BAY**
Large building lots, overlooking the Bay. Ideal location for your future home.
- PRIVATE LOCATION**
2 lots zoned R1, approx. 1 acre each. Very few left in this area. Buy now, save later.
- CLOSE TO TOWN**
Double modular home, very neat and clean. All appliances and air conditioner to remain. Asking \$25,900.
- 50 ACRE FARM**
Large well built home, barn and shed. Good workable land. Beautiful view over the lake. Owner anxious to sell.
- DUPLEX PLUS COTTAGE**
Good income from this fully rented property. Try \$3,000 down with low interest rate. Try an offer.
- PENETANGUISHENE**
Commercial store and apartments on the main street. Needs some work.
- LOW DOWN PAYMENT**
And owner take back mortgage. 2 bdrm bungalow on double lot. Only \$17,000.
- VENDOR TAKE BACK**
Dry marina, storage sheds, workshop plus living quarters. Call for more information.
- SMITH'S CAMP**
Immediate possession on this lovely 2 bdrm mobile. Central air conditioning, 4 appliances to remain.
- WAUBAUSHENE**
Well kept home, beautiful fieldstone fireplace. Many extras. A real bargain at \$29,900.
- SIXTH STREET**
Make an offer. Duplex. Needs some work. Large 3 bdrms and 1 bdrm apt, full basement. Good income.
- BALM BEACH**
2 bedroom cottage on lot 50 x 150. Some furnishings to remain. Asking \$20,000.
- TAY TOWNSHIP**
Conc. 10, 1.079 acres with 245' frontage. Well and septic on property. Circular drive. Priced to sell.
- MORTGAGE PERCENT**
Lovely large bungalow, completely finished up and down. 4 bdrms, 1½ baths. Many extras.
- CLOSE TO TOWN**
29.45 acres, mostly treed, some cleared. Property has drilled well and septic system. Potential mobile park. \$39,900.

Open Monday to Thursday 9-5:30 Friday 9-9 Saturday 9-5 After hours please call

Pat Jagos 526-8964	Ron Josland 526-4359	Rosemary Withers 526-2484	Bonnie Rothwell 526-8233	Jack Swick 526-5603
Anne Butson 526-3363	Steve Chambers 526-5073	Ted Guppy 526-6537	George Marshall 526-6183	Agnes Marshall 526-6183

341 King St. 526-2293 Midland