

Election '80 Platform

Horst Bolick promises honest representation

To serve Tiny Township in the spirit of co-operation is my goal. Tiny Township is a complex area with an abundance of natural beauty, industrious people and jealous neighbours. Tiny withdrew in frustration from the

Area Planning Board for a variety of reasons related to the unwillingness of some neighbour municipalities to accept Tiny's legitimate objections. However, the Area Planning Board is an institution where levelheaded represen-

tatives from Tay, Midland, Penetanguishene, Victoria Harbour, Port McNicoll and Tiny SHOULD sit down and iron out existing differences in the spirit of neighbourly co-operation. Our name may spell TINY but we are

number ONE in all respects and have the ability to take on leadership in the realm of planning for the future.

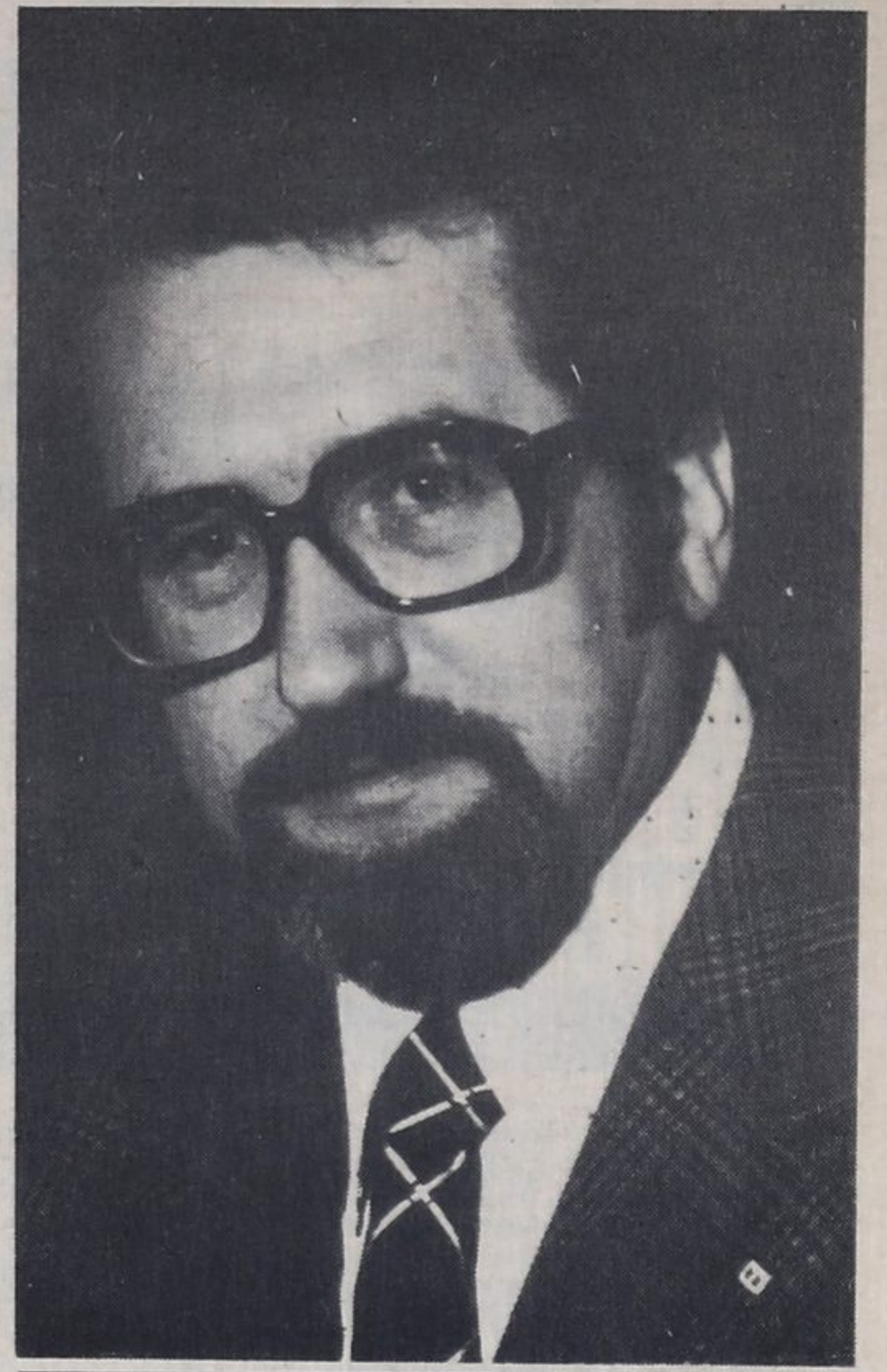
Without compromising or disturbing the natural beauty spots, historical sites and prime agricultural land throughout Tiny Township, we in Tiny must take a good look at future development of commercial and light industry development, along with helping existing local small businesses to expand.

To rely on the Tourist Trade for revenues will not help the employment picture for our children in the future...but business and commerce will provide jobs.

I have lived permanently in Sand Castle Estates, near Lafontaine, for over six years and my relationship with Tiny Township goes back to 1958.

My present employment gives me the opportunity to devote the time and energy necessary to serve on council without conflict of interest; I am determined to act on behalf of all residents in Tiny since I do not represent any special interest group; I have willing ears to learn and listen; and I am prepared to work on any committee Reeve Morris Darby may place me.

If elected I would work hard to...conserve our natural beauty spots; preserve the environment; make Tiny the leading municipality; attract employment opportunities; develop better communication between municipal office and residents; give you fair and honest representation; help existing businesses to expand. Vote Horst Bolick, Candidate for Council, Tiny Township.



Election '80 Platform

Frank Esson, candidate for sep. trustee on SCBE

I am a principal with the Simcoe County Roman Catholic Separate School Board, and am contesting the position of separate school trustee on the public board.

Many separate school supporters do not realize that they have a representative on the two school boards, public as well as separate.

The purpose of the position on the Board of Education is to look after the interests of the Catholic students in the public high schools towards which 40 percent of the separate school education tax is directed.

In explaining this to the voters I would like to point out that such a trustee must be a forceful character if his voice for Catholic high school students is to be heard on a 21-member board. I feel I am the most appropriately qualified of the five candidates running for the position in the North Ward which includes the city of Orillia, the towns of Midland, Collingwood and all the other towns and townships in the northern half of Simcoe County.

As principal of a senior elementary separate school I run a non-nonsense, down-to-earth system of education with a reputation for quality students. I feel that the caring, sharing, Christian atmosphere of the separate schools does not have to end with Grade 8 but can and should be continued into the public high schools.

The controversial Human Relations course, for example, could be greatly improved by a good dose of morality, a teaching area in which a separate Catholic school principal would have a good deal of expertise.

I have 17 years of teaching: One in Europe, two in Ottawa, two as a missionary teacher and 12 as principal in Simcoe County RCSS Board. My wife Barbara and I have travelled to the far corners of the globe, most recently to Egypt, Syria, Lebanon, Jordan, Israel, Greece and New

Zealand.

Such travel broadens the scope of a teacher and brings him back to basics in his thinking and teaching.

Because I am in education every day and am responsible for

graduating students into the public high schools, I know first-hand the needs of those students and will not have to depend on chance encounter or newspaper reports as other candidates might.

Election '80 Platform

Bev Juneau seeks deputy-reeve's chair in Victoria Harbour, Nov. 10

For quite a few years I have been actively involved in our community, taking pride in making our community a better place to live, enjoy, and retire.

I've enjoyed my past two year term on Council, having spent much time, attending seminars, workshops, and meetings.

I thank you for giving me the opportunity to acquire an enormous amount of knowledge, develop personal growth, and gain confidence.

Experience in Community Affairs

Two years Victoria Harbour Council, Co-Chairman of Finance and Administration, Chairman Victoria Harbour Parks, Recreation, and Community Centre Board.

One year Huronia District Hospital Board of Directors.

One year Associate Member Victoria Harbour Chamber of Commerce.

Two years Secretary-Treasurer Victoria Harbour Chamber of Commerce.

Member Mini Bonhomme Carnaval Committee, Chairman of Button Sales and Button Contest, Mini Bonhomme Carnaval Parade Co-ordinator, and King and Queen Contest Committee. Victoria Harbour Coffee Break Committee Member, work in conjunction with Georgian College, Tay and Victoria Harbour Union Library, and Parks & Recreation Board. Volunteer Victoria Harbour Rabies Clinic, Cavanaugh Heart and Cancer Society.

One year local community newspaper correspondent, repo-

rting Harbour Highlights, happenings, and news.

One year Victoria Harbour news reporter, televising weekly

reports, and special presentations on local television station Cable 12, in Midland.

During my involvement with the

Community, I have received aid and support from my family.

In my bid for deputy-reeve, I make no promises, too many

campaign promises are soon forgotten.

If elected as deputy-reeve, I will continue to serve the Community with integrity,

dedication, and in an impartial manner.

Please exercise your right to vote on November 10, a privilege you shouldn't take for granted.

Don McNee: workers are here but jobs aren't says candidate

Don McNee, manager of the Canada Employment Centre in Midland, has been nominated to contest a seat on the Penetanguishene town council in the upcoming municipal elections, Nov. 10.

Mr. McNee was born and raised in Ottawa and received his high school and university education in the Capital city.

He joined the Royal Canadian Air Force in 1950 and served as a pilot and administration officer in Canada and Europe until 1959.

In 1960 he joined then

the National Employment Service and worked at a number of Employment Centres in Ontario before coming to the Midland area and taking up residence in Penetanguishene in 1975.

Community

McNee has been active in the community throughout the past five years.

He was a member of the Huronia Social Planning Council and the ARC Admission Committee. At the present time he is a director and past

president of the Midland, Penetanguishene Junior Achievement Board.

He sits on the Area 3 Early School Leaving Committee and is also a member of the Midland Chamber of Commerce.

McNee coached a Pee-Wee hockey team in the Penetanguishene Little NHL and is currently a director of the Penetanguishene Minor Hockey Association.

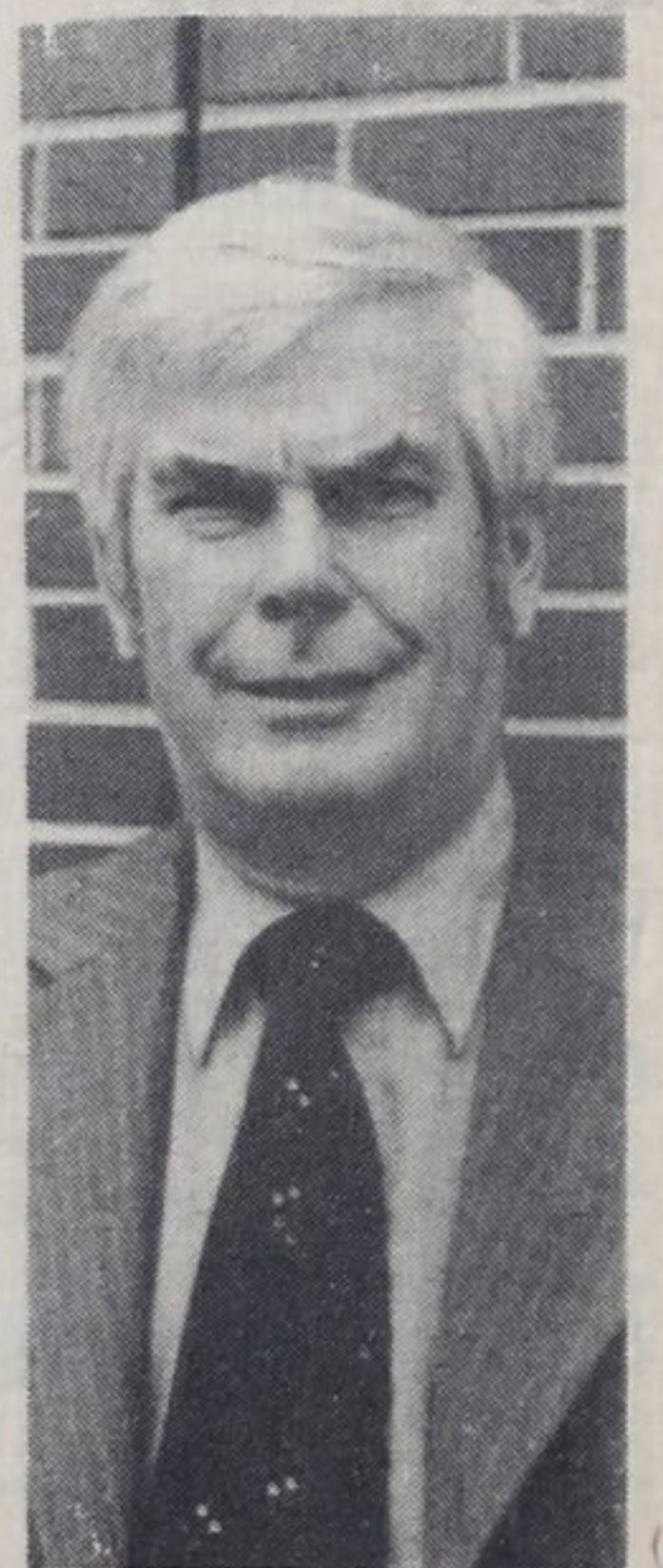
McNee is the 1980-81 president of the Midland Rotary Club. Since 1977 McNee has been chairman of the Town of Penetanguishene

Arena, Parks and Recreation Board.

By nature of his job, McNee is interested in seeing more industry come to Penetanguishene.

"The workers are here, the jobs aren't," he said. Increasing Tourist facilities would also increase job opportunities for the labour force.

McNee with his daughter, Donna, and son, Bruce, who are students at Penetanguishene Secondary School, reside on Lorne Street in Penetanguishene.



Election Platform '80

Al Hennin sees communications with citizens an essential ingredient



With less than one week to go prior to municipal election, I feel it is my duty to inform the people of Ward One, and all citizens of Midland in general of my decision to be a candidate for Alderman in Ward One. First, I would like to give a little of my background.

I served as a member of the Parks Board for

one year, and for the past four years have been associated with the Midland Public Utilities both as a commissioner and citizens representative on water advisory committee.

I have been a resident of Midland for 31 years, and take great pride in our community finding it a good place to live in.

Entering this campaign, I have no specific platform, and make no

promises other than to serve the people of Midland to the best of my ability.

I will study each issue as they arise and my decisions will be thought over carefully, thinking of the benefits they will derive for the community as a whole.

I like all citizens, am concerned as to how our tax dollars are spent. Good judgment should

prevail in planning spending expenditures.

Communication with the citizens is essential, and if elected I hope you let me know of your concerns so that they can be brought to councils attention.

I ask for your support at the polls on Nov. 10th, and if you place your trust in me, I will represent you with honesty and sincerity.