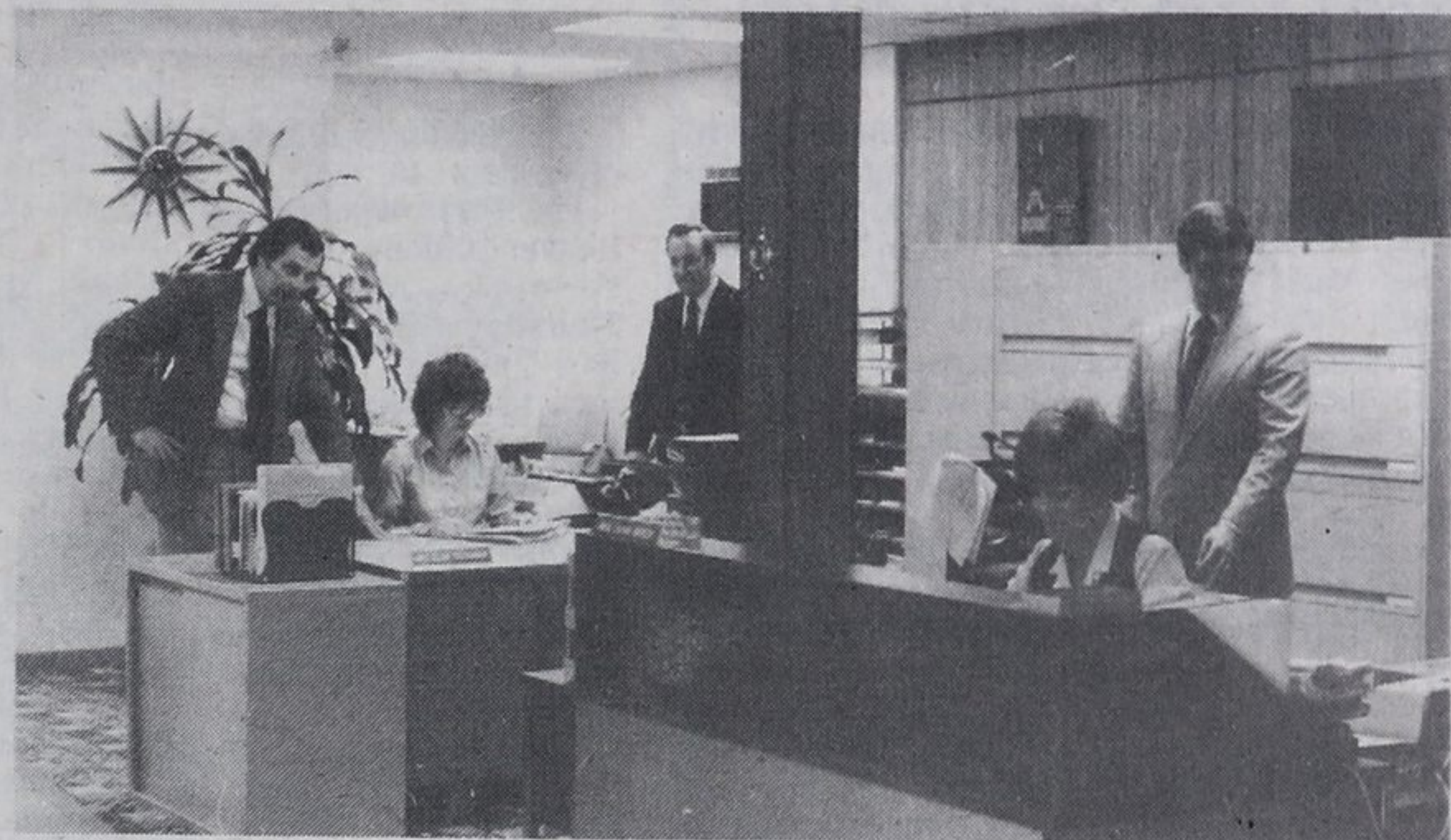


& JONES

AGENCY LTD.
Midland, Ont.
L4R 4L1

Boat, Business
Employee Benefits
RRSP

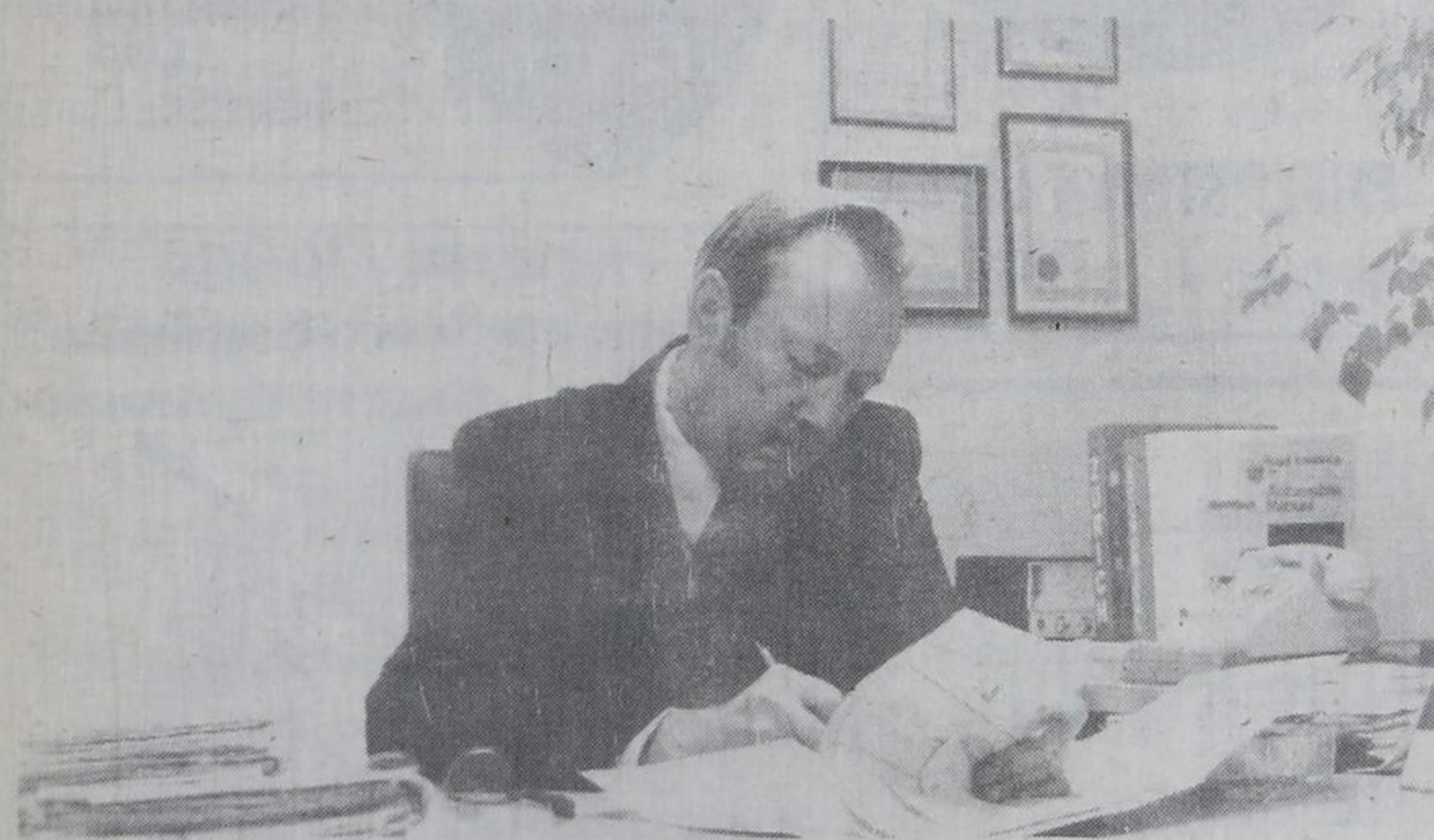


Inside
Shown here the busy large, modern office facilities.
Office hours 8:30 a.m. to 5:30 p.m.



STU GERVAN - President

Stu is a "Fellow of the Insurance Institute of Canada" which is the highest academic achievement in the General Insurance field. Prior to forming Gervan & Jones he was an area Field Representative for the Royal Insurance Group.



ROSS JONES - Vice-President

Prior to 1970 Ross was a life insurance agent for a large life insurance company and a general insurance agent with Ted Brennan Ltd. Ross was instrumental in the founding of the company.



Staff

From left to right Ross Jones, Valerie Howe, Eleanor Hudson, Elda Garraway, Liliias Baker, Frankie Allsopp, Bob Davy, Stu Gervan

& JONES

ManuLife
The Manufacturers Life Insurance Company