

Classified

Classified Word Advertising Rates	
Up to 18 words	
(first insertion)	\$3.00
(second insertion)	\$2.80
(third insertion)	\$2.70
(subsequent insertions)	\$2.70 ea.
Additional words	.10

FOR RENT	FOR RENT	FOR RENT	FOR RENT	FOR RENT	FOR RENT	REAL ESTATE
2 bedroom apartment in Victoria Harbour. Immediate occupancy, large fireplace, \$150 plus utilities, 534-7063. 87-88-89	2 bedroom house, 465 Queen St., Midland, \$350 per month plus services. Call 534-3148 after 6 p.m. 87-88	Nicely decorated two bedroom apt in Wyevale. Carpeted, appliances included, family room with walkout to private patio and backyard. Call W. C. Player Real Estate Broker - 322-1991. W87 to W101	2 bdrms, garage, Wahnekeuning Beach, \$230 per month plus utilities. Available Oct. 31. 533-2434. 86-87-88	Industrial unit for small business, 1200 square feet, \$300 per month. Phone 526-7662. 84 to 91	3 bedroom waterfront apartment at Silver Birch Beach. Phone 526-4450 or 533-3458. 81 to 88	Beautifully kept three bedroom - bungalow, broadloomed, large family kitchen, fireplace in rec. room, central air conditioning, built in garage, large garden, exquisitely manicured grounds. Located in Hillsdale. \$54,000. Call Lou Goedemondt Real Estate Ltd., 728-4067. 83, 85, 87
One and two bedroom apts in modern 12-plex. Fully carpeted, appliances included. Call 526-3092. W87 to W101	Large two bedroom apt in remodelled farmhouse, 2 miles north of Elmvalle. Modern kitchen with built in appliances, carpet, fireplace, etc. Professional couple preferred, \$335 monthly. Call W. C. Player Real Estate Ltd. Broker. 322-1991. W87 to W101	why mess up your house, rent the Wyevale Orange Centre for your party, dance or other functions. Call 322-2647 for rates. 117F	Furnished bachelor apartment, downtown Midland. Available immediately, \$180 per month includes all utilities and cable TV. Apply Shulman's Apartments - 526-6131 or 526-8241. 82 to 89	Spacious two-storey house, gardening, hydro included, \$265. Two bedroom house, recreation room, workshop for small manufacturing 25 x 40. Also one bedroom apartment, utilities included - \$145, Orr Lake area. 549-7326. W77 to W91	REAL ESTATE Coldwater building lot, small barn and well on this property. Very near annexation area, good high lot. Could have severance possibilities to give three lots. Asking \$41,000. Call Lou Goedemondt Real Estate Ltd., 728-4067. 83, 85, 87	

A. E. LePAGE
(ONTARIO) LTD. REALTOR

We'll help make it easy

A.E. LePage Highway Mall
Highway 27, Midland 526-4271
Coldwater 835-3343
Elmvalle 322-1381



7 PER CENT MORTGAGE BAYVIEW HEIGHTS
\$46,900 — 4 big bdrms, \$10,700. To existing mtges. Family kitchen with sliding doors to 46 ft in-ground pool. Audrey Wristen.



IDEAL WATERFRONT REDUCED
\$74,900 — 4 bdrms, fully winterized, rec. room with fireplace, heated sun room, large deck, breathtaking view over Geo. Bay. Call Marjorie Contois.



ONCE IN A BLUE MOON
An opportunity to take over a high volume business with even greater future potential. Lesperance Station in Balm Beach. \$165,000. Clarence Lee.



HUGEL HEIGHTS - \$53,900
Attractive 3 bdrms, family room, fully broadloomed, fireplace in rec. room. Frank Wristen.



OUT OF TOWN OWNER
Wants action on this 4 bdrm, brick in excellent condition. Large lot close to downtown shopping. Asking \$34,500. Make your offer. Clarence Lee.



\$3,100 - DOWN TO ONE MTGE
Buys this duplex in a good rental area. 2 one bdrm apts. Aluminum siding, private drive. Asking \$30,900. Audrey Wristen.

OLD CHARM ENHANCED - \$21,900
By aluminum siding, large kitchen, den or 4th bdrm, recently insulated, 4 pc. baths, partially renovated, private drive and garage. Audrey Wristen.

WATERFRONT COTTAGE - \$49,900
A charming, fully furnished, well equipped, 3 bdrm cottage on a large treed lot. Jack Scott.

\$14,500 LOT EVERTON DRIVE
Two acres, well treed ravine lot. Jack Scott.

\$54,900 - SUPERB BEACHFRONT
2 fully furnished top rental cottages, 3 bdrms and 4 bdrm, large lot, Balm Beach. Jack Scott.

64 ACRE FARM ONLY - \$40,000
All in good farmland, no bush, 2 miles south of Sunnidale Corners. Jack Scott.

\$18,500 - 208 FT FRONTAGE
Large building lot on Lakeshore Road, Clearwater Beach area. Jack Scott.

WATERFRONT LOT
At beautiful Bluewater Beach. Buy to build and as an investment. Asking \$32,000. Clarence Lee.

SMALL HOLDING - REDUCED!!
Beautiful 5 acres for your future home or good investment. Now only \$19,900. Clarence Lee.

LOT ON CORNELL DRIVE
Overlooking Little Lake. Ideal location on Dead End Street. Quality homes in area. Asking only \$14,900. Clarence Lee.

OWNER MOVING! PRICE REDUCED
\$33,000 — 3 bdrms, full basement, only 8 yrs old. Large lot, 93 ft x 253 ft. Marjorie Contois.

NEW LISTING - SIXTH ST
\$43,000 — 3 bdrms, bungalow, full basement, attached garage. Call Marjorie Contois.

SPACIOUS FAMILY HOME
\$44,000 — 4 bdrms, large eat-in kitchen, 2 baths, large family room, close to downtown. Marjorie Contois.

PORT MCNICOLL BUNGALOW
\$44,900 — 3 bdrms, Cathedral ceilings, loaded with closets, attractively decorated, full partially finished basement. Frank Wristen.

\$49,900 - WATERFRONT HOME
Plus guest cottage, sandy beach, stone fireplace in living room, close to town. Frank Wristen.

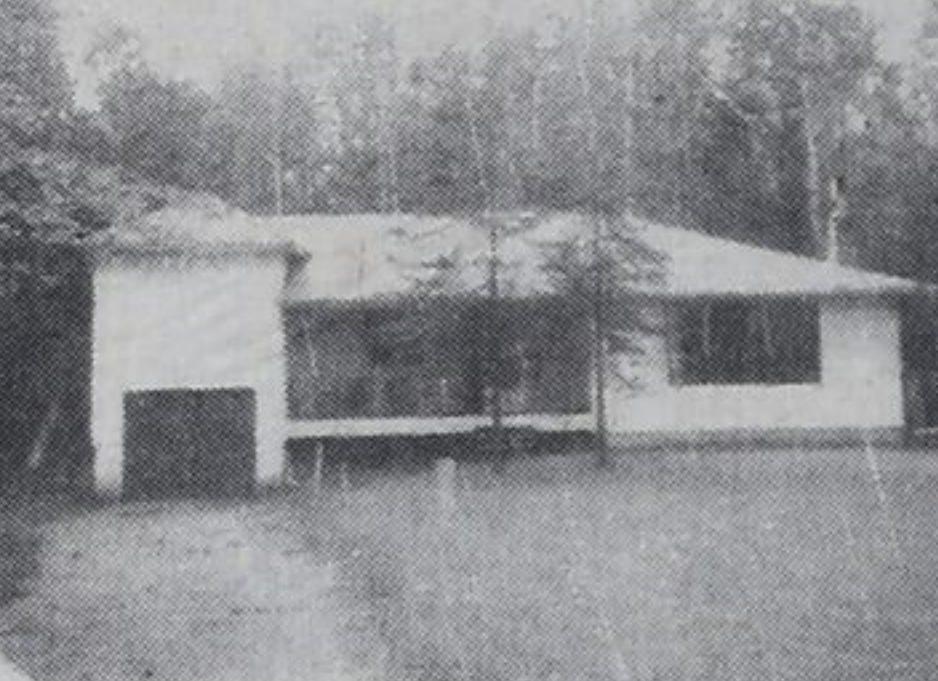
BLDG LOT IN MIDLAND - \$7,900
Reduced for quick sale. Jack Scott.



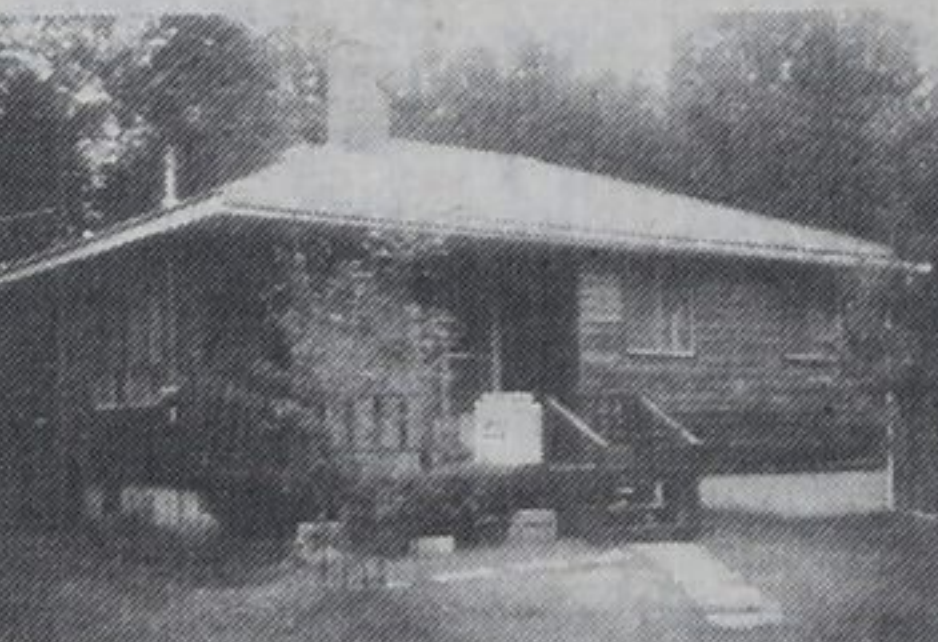
\$50,900 - SUPER FAMILY HOME
Glen Mohr Cres., Midland, 3 bdrms, large rec. room, fenced backyard, near schools, churches, shopping. Jack Scott.



\$72,900 - VICTORIA ST
Well located high lot with view over Georgian Bay. 4 bdrms, 2 storey, living quarters with 2 bdrm apt above. 11 per cent mortgage. Frank Wristen.



ARDMORE BEACH PERM. HOME
Exceptionally strong construction. 1600 sq. ft with full basement, illness forces sale. Asking \$53,900, and looking for offers. Clarence Lee.



MODERN HOME ON 10 ACRES
Secluded location near sandy beach. Fully insulated with electric heat. Fireplace, drilled well. All for \$65,000. Make your offer. Clarence Lee.



PENETANG - BEAUTIFUL VIEW
\$41,000 — Eat-in kitchen, large living room, 4 bdrms, full high basement, laundry room, spacious fenced-in yard. Marjorie Contois.

ELMVALE 322-1381



WAVERLEY - 200' x 200' LOT
\$59,500 — Scenic, three bdrm residence with a full basement, bdrm, brick fireplace, large deck and good garden spot. Choice area. Carl Davis.

FULL BASEMENT WITH REC. RM
\$44,900 — 1100 sq. ft 3 bdrm bungalow at Orr Lake, separate dining room, with built-in china cabinet, kitchen has extra cabinets. Call Gord Touet.

COUNTRY SETTING - ELMVALE
\$39,500 — SHARP - two bedroom home, tastefully decorated, broadloom, 252' x 92' fenced lot, workshop, garage, ideal starter home. Carl Davis.

STONE FREE 90 ACRE FARM
\$125,000 — Owner will hold mortgage with \$30,000 down, 4 bdrm home, barn and steele impliment shed, good fencing, spring water. Call Gord Touet.

ATTENTION SKIERS - WASAGA
\$35,000 — Comfortable three bedrooms, year round retreat, with a 4 pc. baths and a Franklin fireplace. Central to sporting activities. Carl Davis.

POOL HALL - SMOKE SHOP
\$14,000 — Leased building operating, 4 tables plus pin ball machines. Extra over the counter sales, choice main street location. Call Gord Touet.

ALLENWOOD BEACH - NORTH
\$27,900 — Cozy 2 bdrm cottage with propane heating and stately shade trees. Direct access to a safe, sand beach. Ideal summer retreat. Carl Davis.

ELMVALE BACKSPLIT LEVEL
\$47,500 — 2 year old, 1200 square foot home, divided basement, huge 11 x 22 eat-in kitchen, thermo windows, insulated garage. Call Gord Touet.

NATURE LOVERS PARADISE
19 nicely treed building sites in a parklike setting, overlooking peaceful Farlane Lake, near Awenda Park. Priced at \$6,900 and up. Carl Davis.

Sales staff

Joyce Bingley	361-2696	Howard Heacock	322-1753
Marjorie Contois	534-3634	Bob Sweezy	526-3985
Debbie Cote	526-5553	Don Tannahill	534-3106
Carl Davis	322-2962	Mary Thompson	533-3246
Laurie Gendron	756-2475	Gord Touet	322-2245
Clarence Lee	361-2599	Paul Vollick	756-2731
Becky Marchildon	526-3980	Audrey Wristen	534-3998
Barbara Giles	538-1028	Frank Wristen	534-3998
Elmer Strongitharm	686-796C	Jack Scott	361-2409
Nancy Trowell	636-7957	Claude Bingley	361-2696
Bryan Davidson	Appraiser	Gord Hanna	Manager