

**INDUSTRIAL SPACE FOR RENT**

Ideal for storage of light manufacturing as low as \$167 net monthly. Contact Wayne Cowdery at Bryson McQuirter Real Estate Ltd. 526-9391 TF

Realtor

Top Sales Representative

Month of September



Henry Light

Congratulations to Henry Light in winning the Top Sales Representative Award for the month of September.

Henry is well deserving of this award especially since the competition was so very keen in one of our better Septembers' ever.

As many of you know Henry works out of our Penetang branch office and is one of the areas most experienced and recognized agents.

We at McQuirter's tip our hats to Henry for this fine achievement and hope that he and wife June enjoy one of those now famous "dinners on the Boss" at their first chance.

**BRYSON McQuirter**  
LIMITED REALTOR

317 King St. Midland 526-9391  
4 Robert St. W. Penetanguishene 549-3104  
Honey Harbour 756-8861  
82/83

**A. E. LePAGE**

(ONTARIO) LTD. REALTOR

**We'll help make it easy**

**GARDEN CENTRE - NURSERY**

\$80,000 — Choice highway location between Barrie and Elmvalle, 2 bdrm bungalow with carpet throughout, new cupboards, 1/2 acre lot. Gord Touet.

**YEAR OLD SPLIT LEVEL**

\$47,500 — Built with saving energy in mind, 2 x 6 stud walls, thermo windows, extra insulation, 3 bedrooms, extra bath hookups, garage. Gord Touet.

**DOUBLE GARAGE - WORKSHOP**

\$36,500 — Try your offer with \$3500 down, 3 bdrm home, separate dining, oil furnace, wood stove, garden, berries, fruit trees, shade. Gord Touet.

**A PLACE TO ROAM**

\$44,900 — 71 acres vacant land with high dry building site, variety of trees, located on quiet dead end road, 2 miles from hwy. Call Gord Touet.

**135 ACRE WORKING FARM**

\$115,000 — 3 bdrms, 1 1/2 storey stucco home. Bank barn with stable cleaner, silo, about 80 acres cultivated, mixed hardwood bush. Gord Touet.

**ELMVALE**  
**322-1381**

Member: Midland Penetang District Real Estate Board

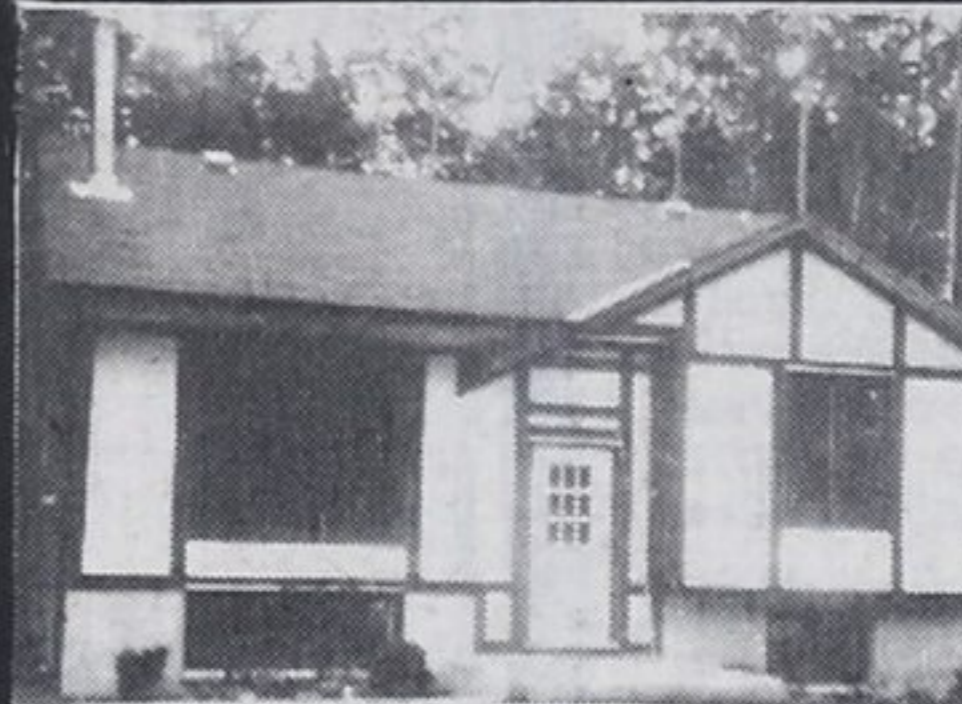
**BRYSON**

**McQuirter**

LIMITED REALTOR

**PENETANG 549-3104**

4. Robert St. W.



**SPOHN DR., PENETANG**

P-76 — Immediate possession and excellent 10 7/8 per cent mortgage, makes this fine home a dream come true. Enjoy the large kitchen, a place for your dining room set and the cozy comfort of a fireplace in the living room or the finished family room, hobby room and 2nd baths. All this for only \$57,500.



**281 HANLY ST., MIDLAND**

MLS-630 — Lovely al-siding 1 1/2 storey dwelling at a price you can afford. Excellent financing at 10 3/4 per cent. Very neat and tidy. Asking \$33,500.



**65 PEEL ST., PENETANG**

MLS-555 — Handyman's challenge, make this your winter project and complete this home into two apts as a revenue. Owner will hold the mortgage on this one. Try an offer you may be surprised. Asking \$22,000.



**47 PEEL ST., PENETANG**

P-70 — Perfect starter home for the beginner, take advantage of the extra income from the one bedroom apartment and enjoy the three bedroom section for yourself. Asking \$29,500. Call now for viewing.

**WEST ST., PENETANG**

P-72 — Cozy bungalow on large country lot, just minutes from town shopping, plenty of room with finished basement. Asking \$42,900.

**BALM BEACH RESIDENT**

Only 3 years old, situated on a large lot with small stream through the front yard. Double garage, family room, custom built, unique layout you would enjoy. Asking \$54,500. Make an offer.

**EXECUTIVE 4 BDRM HOME**

MLS-310 — Spacious rooms, 4 levels, large lot, double garage. Must be seen to appreciate. Try your offer.

**OSSOSSANE BEACH AREA**

MLS-543 — This fine al-siding cottage is furnished. Situated on a large lot with garage. Close to excellent swimming area. Has been reduced to an asking price of only \$28,000.

**1400 SQ. FT COUNTRY HOME**

P-55 — Just 3 miles from Penetang. This spacious home is near completion, boasts all large rooms, on large country lot, exterior to be finished. Asking \$55,500. Call to view.

**YEO STREET, PENETANG**

P-56 — 5 acres in the town of Penetang, just a super chance for that small subdivision you wanted to try. Terms can be arranged, call now on this one.

**BLDG LOTS AND LARGER PARCELS OF LAND**

Single lots available as low as \$6,000, in and out of town serviced lots, \$9,500 and up, waterfront lots on isle as low as \$8,000.

**LARGE PARCELS OF FARMING LAND AVAILABLE**

**SPECIAL OF THE WEEK**  
Cheaper than renting, yes with only a low down payment of \$4,000 and a payment of about \$207 a month, you can purchase this 3 bdrm home with dining room, large kitchen and living room, full basement and with the help of the 2 bdrm apt. This is quite a buy. Immediate possession.



**ROBERT ST. W., PENETANG**

MLS-710 — This 4 bedroom home is situated on a huge 147 x 199' lot with the possibility of extra two lots. Grounds are in excellent shape. Close to the waterfront park. All offers presented. Asking \$49,000.

**EVERTON DRIVE, SUNNYSIDE**

P-57 — This fine home sits high on the lot but boasts central vacuuming, a family room, one of Midland's finest kitchen and dining area, a huge double garage, and fully landscaped lot and the price is right at only \$54,900.

**ROBERT ST., PENETANG**

MLS-619 — Enjoy the view and quiet of this remodelled home. Owner has recently changed roofing electrical, plumbing, windows, and furnace and installed new carpeting. Now at \$35,500 call now.

**PHASE 2 Penetanguishene Rolling Sands Subdivision**

**THINKING OF BUILDING YOUR NEW HOME?**

37 lots remaining, act now, purchase a lot of your choice at these still low prices. Starting at \$9,500. Completely serviced with sewers, water, hydro, etc. Drop in and check. For complete details.

Open - 9a.m. - 5p.m. Mon. - Sat.

After hours call -

Henry Light 549-8845 Ron Hamelin 549-8834

Harry Hagedorn 549-8248

**SEVERN SOUND**  
midland REALTY LTD. REALTOR



**DUPLEX**

Close to downtown and schools. 2 bdrm apt and 1 bdrm apt, full basement. Income \$400 a month. Owner anxious. Asking \$36,000.

**1. PENETANGUISHENE**

Poyntz St, completely renovated 2 storey family home, rec. room, 1 1/2 baths, large deck with view of Bay. \$54,900.

**2. CLOSE TO MIDLAND**

Double modular home. Washer, dryer, stove, fridge, freezer, air conditioner, to remain. Very neat and clean. Asking \$25,900.

**3. 50 ACRE FARM**

Large well built house, barn and shed. Good workable land. Beautiful view over the lake. Owner anxious to sell.

**4. MIDLAND POINT**

Waterfront cottage, Midland Point, 75' x 175' lot, good year round access. Asking \$54,900.

**5. DUPLEX**

2 storey spacious older home on large lot. Large 1 bdrm apt, 4 pc. baths and 2 bdrm apartment with bath. Many extras. \$49,900. Open to offers.

**6. WATERFRONT AND WELL KEPT**

Truly a fine property with good private boat slips, launch ramp, manicured grounds, 2 bedrooms, living room with stone fireplace. Double garage. Make an offer, asking \$58,900.

**7. EXECUTIVE HOME**

3 bedroom brick bungalow, full basement, living room with walk out to approx. 5 acres. Medonte Hills. \$79,900.

**8. \$44,500**

And worth every penny. Nothing to do but move in. Quiet area close to schools. 3 bedrooms, attached garage, lovely lot. Call today.

**9. PERFECT FAMILY HOME**

Located on a cul-de-sac features 4 bdrms, large eat-in kitchen, fireplace in family room. Beautifully decorated. Mortgage 10 1/2 per cent. \$59,900.

**10. CLOSE TO TOWN**

29.45 acres, mostly freed. Some land cleared. Property has drilled well and septic system. Potential mobile home park. \$39,900.

**11. 3 BEDROOM BRICK HOME**

Attached garage. Nice lot asking \$36,500. \$5,000 down, vendor will assist in financing.

**12. EDWARDS PARK**

1978 - 2 bedroom, Florida room, carport, paved drive. Edwards mobile adult park on Georgian Bay. \$29,500.

**13. SCENIC ACREAGE**

50 acres Midland Point. Half clear and half mixed bush. Call for further particulars.

**14. PARADISE POINT**

Well kept 3 bedroom cottage, 4 pc. baths, interior completely decorated. Franklin fireplace. Good size lot. \$29,900.

**15. BEST VALUE IN COUTNAC BEACH**

Asking only \$8,900. 100' x 180' level, well treed building lot, close to beach. Community water available.

**16. MIDLAND POINT**

Winterized cottage or permanent home within walking distance of Bay. Double lot 200 x 150'. Great for a small family. Asking only \$25,000.

**17. DUPLEX AND COTTAGE**

Close to downtown. 1 bdrm and 2 bdrm apartment and 2 bedroom cottage. Good investment. Make an offer. \$48,000. Try \$3,000. Down with low interest rate.

**18. PRIVATE SETTING**

Located on a cul-de-sac, 3 bedroom bungalow, spells privacy with a fully fenced back yard and many trees. Fireplace. Drapes and some furniture to remain. \$29,900.

**SUNNYSIDE**

Good size treed building lot on paved street. Gas and water on street. Priced to sell, asking \$9,500.

**SMITH'S CAMP**

Immediate possession on is lovely 2 bedroom mobile. Central air conditioning. Appliances to remain. \$24,500.

**21. IMMACULATE CONDITION**

This bungalow must be seen, many extras. Dishwasher built-in. 1 1/2 baths, rec. room, wet bar, 1900 sq. ft of living area. Mortgage 11 per cent. \$44,900.

**22. ISLAND RETREAT**

Imagine your own island in a well sheltered Bay, close to Midland by boat. Lovely main cottage, sleeping cabin and boathouse. Buy now. Call today. \$18,200

**23. \$18,200**

Looking for a cozy clean home for a cold winter? We have it. Immaculate mobile in Smith's Camp. All appliances included in low price. Get tucked in before the snow flies!

**24. A GROUPEE**

Why not try to get a group together and have your own private park for picnicing and boating on the Bay. Beautiful lots on Present Island with sand beach.

Open Monday to Thursday 9-5:30 Friday 9-9 Saturday 9-5 After hours please call

Ron Josland 526-4359 Ted Guppy 526-6537 Rosemary Withers 526-2484 George Marshall 526-6183 Agnes Marshall 526-6183  
Pat Jagos 526-8964 Steve Chambers 526-5073 Bonnie Rothwell 526-8233 Jack Swick 526-5603

**341 King St. 526-2293 Midland**