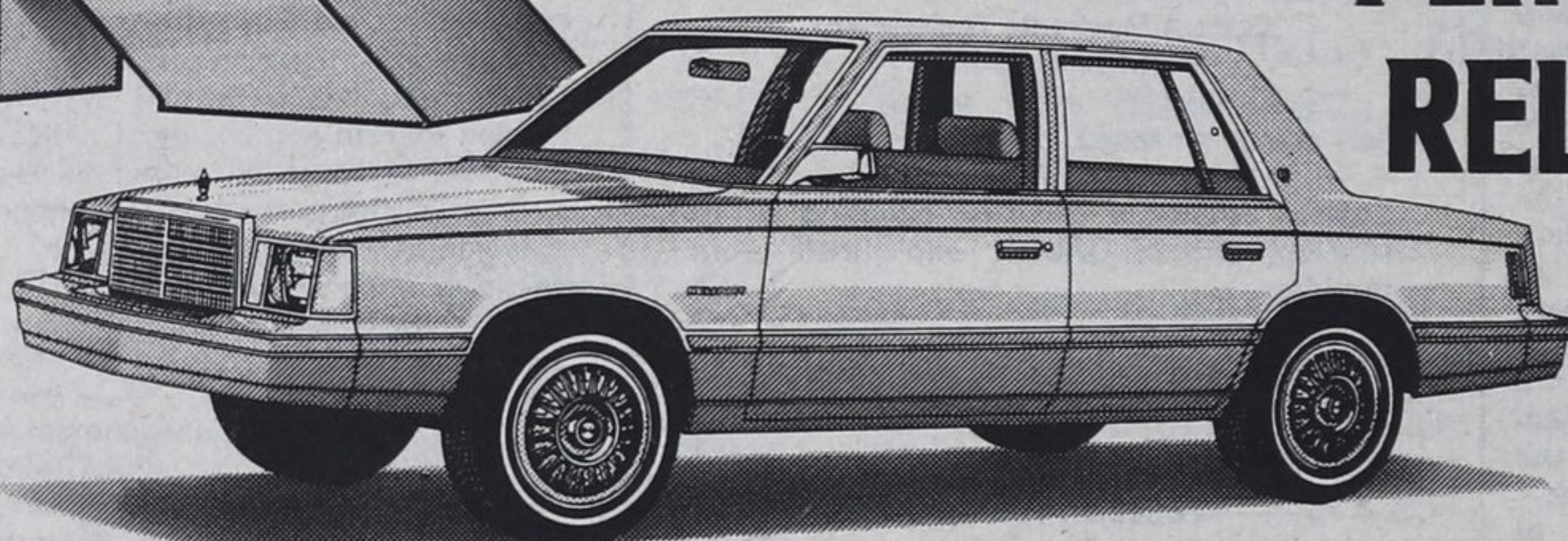
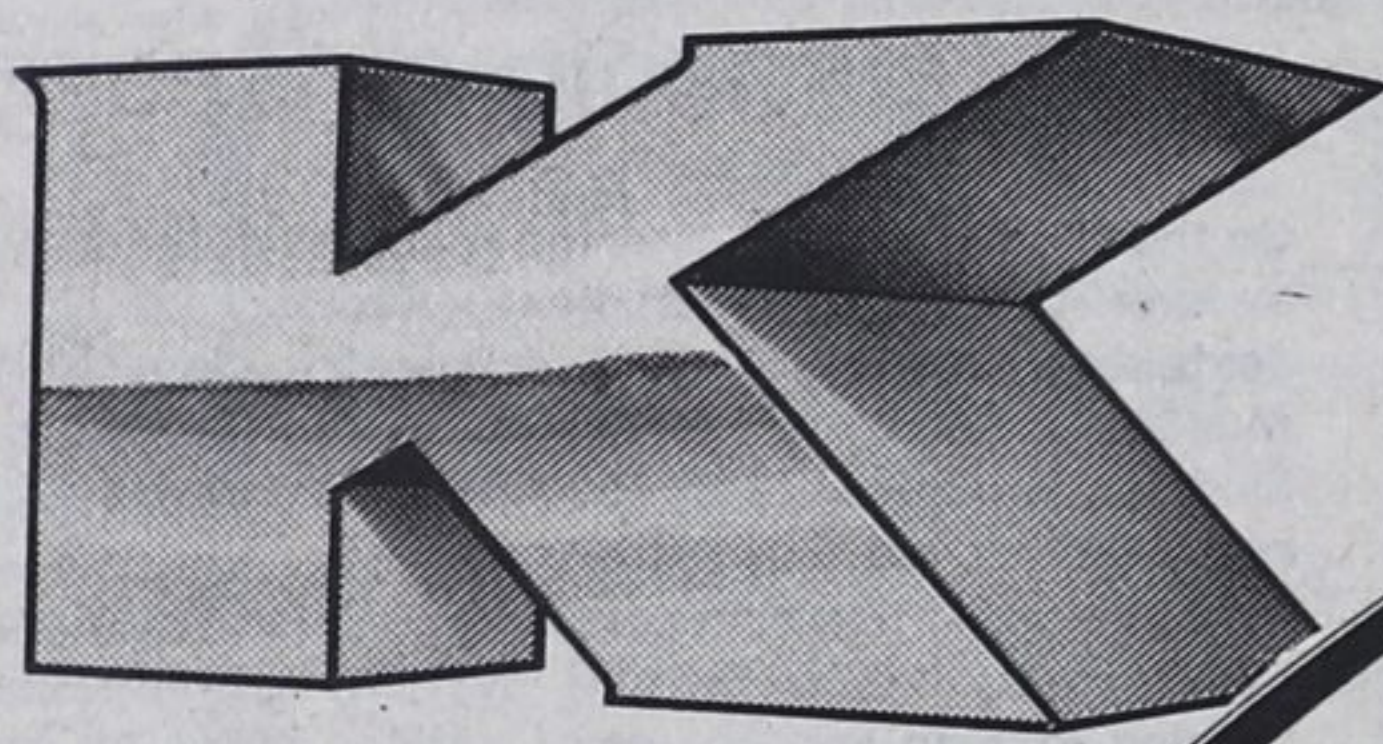


IT'S HERE!
OCT. 2

**The newest most advanced
Front Wheel Drive
cars anywhere!**



**1981
PLYMOUTH
RELIANT K**

Fuel Economy with regular gas

Combined fuel consumption rating 38 mpg, or 7.5 L / 100 km. That's the highest fuel rating for a front-wheel drive, 6-passenger car using lower priced regular gas. "Regular" gas saves 8.2 cents a gallon. That's saving!

**BEAT
THE PUMP**

COMBINED MPG
38
7.5 L per 100 km
using
lower priced
Regular Gas

As Published in
Transport Canada
Fuel Consumption
Guide

Front Wheel Drive

Puts the weight of the engine and transmission directly over the front driving wheels, for remarkable pulling-ahead traction and power. Designed and engineered by the North American car-maker who has built more front-wheel drive automobiles. And has billions of miles of proven front-wheel drive experience.

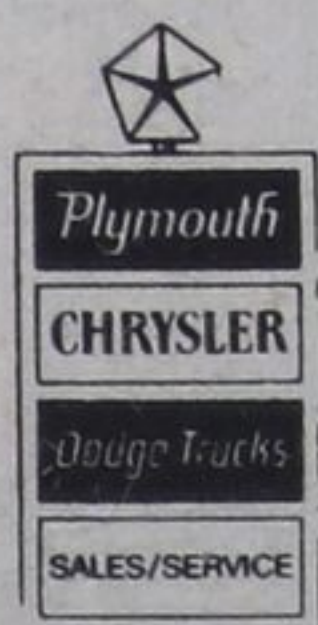
Room for 6

K-Car 4 door sedans give you 6-passenger comfort...G.M.'s Citation only has room for 5. K-Car 2 and 4 door sedans also give you 15 cubic feet of trunk space. K-Car station wagons...North America's only 6-passenger front-wheel drive wagons...give you 28 cubic feet more cargo space than Citation.



CHRYSLER IS **Canada's
Front Wheel Drive
Company**

The way to beat the pump.



HURONIA MOTORS LTD.

35 Robert St. West, Penetanguishene

549-7783 or 549-2397