

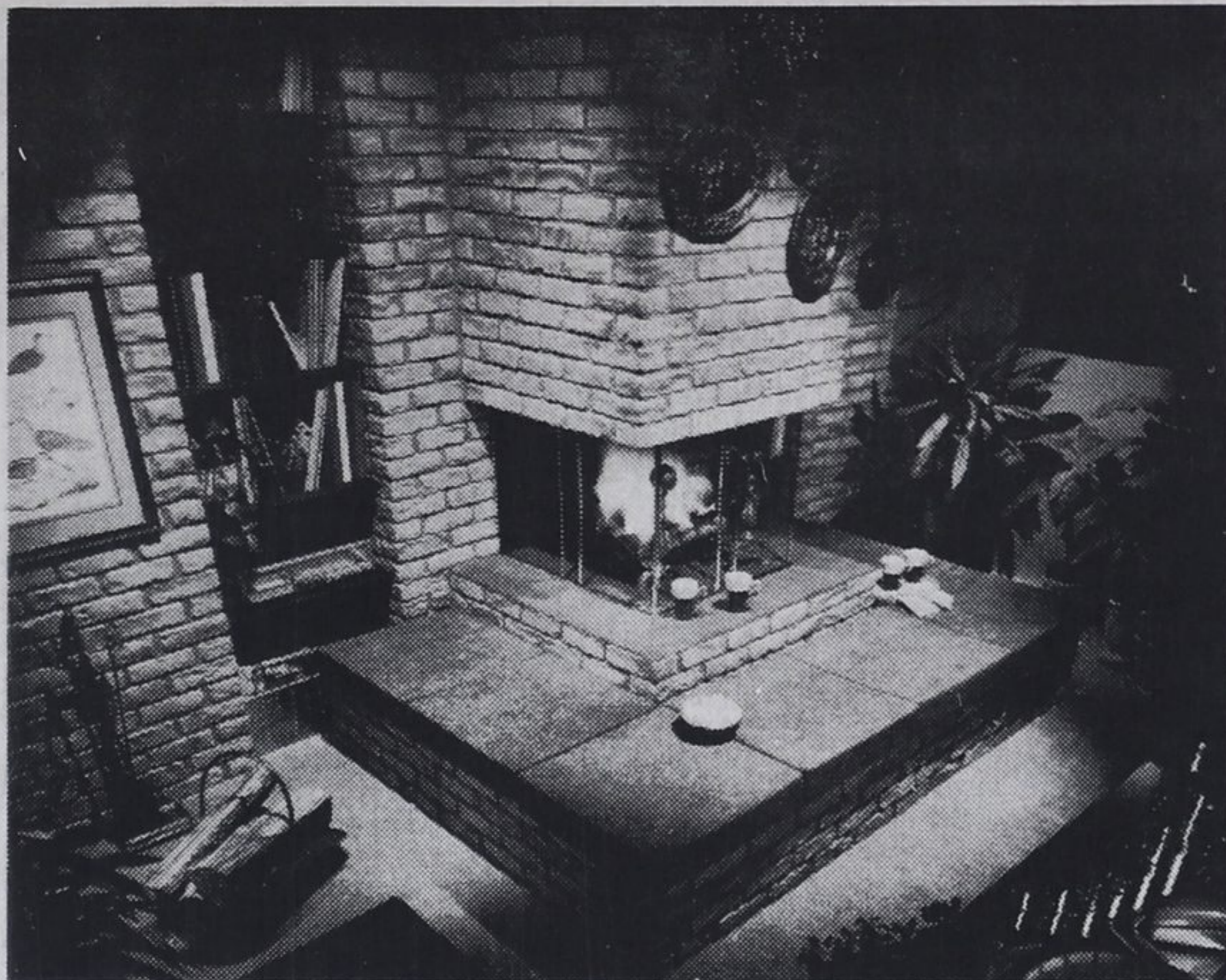
Bricked Fireplace Warms Family Room

The family room glows with additional warmth when it focuses on a bricked fireplace.

The cozy atmosphere shown here was established with Roxite man-made masonry brick panels, introduced recently in 6-brick panels by the Home Improvement Division of Masonite Corporation.

The tiered platform for the hearth has been accented with buff-colored Roxite brick. The brick theme is continued around the chimney area and on the wall, adding an intimate feeling to the recessed shelves.

The brick panels are easily installed by do-it-yourselfers. The panels come in work-saving sections that are self-aligning and self-spacing, and are applied without the mess, preparation time and cost of real



A WARM, COZY FIREPLACE SEATING AREA was easily created here with Roxite man-made masonry brick panels in a do-it-yourself project designed to enhance family room.

brick. Simply apply adhesive to the back of the panel or

the wall. Position the panel on the wall and press to assure a strong bond. Apply mortar in the grooves between the bricks to complete the job.

When the project is completed, you have an eye-catching wall that's virtually indestructible, as well as impervious to dirt, grease, splatter and stains.

Roxite brick is pre-sealed, non-porous and is washable with soap and water. It's made of 70 percent genuine stone mixed with an exclusive bonding agent.

Available at local building material dealers, these brick panels come in white and natural, in addition to buff color.

but also delivers the capabilities of up to six different power tools in one multi-purpose product.

Warm Up to Winter! Fix-Up Now

There's no place like home—especially when a tight mortgage market and slow sales have convinced many homeowners to hold onto their houses until times improve.

While they wait, more and more owners are spending their time in ambitious remodeling and maintenance projects once considered the domain of skilled tradesmen. But, now when professional help is often beyond the average homeowner's budget, the obvious solution is to do it yourself. If you're one of those who are taking maintenance matters into your own hands, welcome to the club.

Actually, there's probably no better time of year to join this growing fraternity than in the fall when every homeowner faces a vast array of chores to be done before the first snow flies. But, with a little application and patience, you'll find most home-improvement tasks will be much easier than anticipated. And, for the more complicated work, there are always plenty of books in the library or bookstores to help guide you along the right path.

Until recently, traditional fall chores have been regarded as necessary, but not eagerly anticipated. The fact is, nothing puts a damper on a homeowner's work attitude faster than a tough, labor-intensive job that requires a variety of tools and other materials to complete properly. But now, a new portable power tool called the Workwheel has been developed by Black & Decker.

So versatile and easy to use is the Workwheel that it may even get you excited about fall maintenance chores. It not only puts an end to tedious handwork,

LAMERS STOREWIDE SALE

4 days only

Oct. 1,2,3,4

**20%-50%
OFF**

- All Benjamin Moore Paints
- Canadian Imported Wallpapers
- Ready made Drapes
- Roller and Paint Brushes
- Miscellaneous items

**LAMERS PAINT
& WALLPAPER**

313 King St., Midland 526-7411

Wood Moulding:

Used More for Decoration, Too

The traditional use of wood moulding hasn't changed much over the years. It's still used to cover up imperfections at corners and seams of walls, ceilings and floors. But, its use as a decorative wall accent, improving a piece of furniture, or as a room divider is coming in to favor more and more.

The key to proper use and ease of working with wood moulding lies with planning, the right tools and practice, says the Wood Moulding and Millwork Producers.

The initial step in any project is planning. A list of materials, tools and supplies for the project should be made before any work begins.

For most moulding work, you'll need a miter box and a small, fine-toothed saw to cut clean, accurate angles. A hammer, nail set and finishing nails are nearly always necessary. Sometimes, a coping saw is required to cope a joint for a tight fit. Other important tools include a tape measure, glue, sandpaper and wood filler.

Though practice may

not always make perfect, it helps. Use some scrap pieces to practice mitering or coping at various angles before cutting the actual piece you'll need.

A corner clamp is a useful tool when clamping mitered corners together for a tight joint. Once the corner is glued and clamped, it should be nailed.

When gluing pieces together, be careful not to get glue on the surface to be finished. If the glue oozes out from a joint, wait until it dries, then cut or chip the glue away. Smear glue on a wood surface will impair the finish.

Correctly measuring moulding can save expense as well as trouble. When mitering moulding to make a square or frame, remember to use the outside dimension as the length required.

Moulding is available in 3 to 16-foot lengths. Use short pieces whenever possible. When determining the amount of wood moulding you need, round off to the next largest foot to allow for cutting and trimming.

FALL
WAREHOUSE CLEARANCE!

LAY-AWAY
NOW FOR CHRISTMAS

**LAZY-BOY
CHAIRS**



- Large selection
- Many colours
- Many styles

• Clearance prices

Coffee
Browse



Free
Parking

Urb's Home Furnishings
101 Main St., Penetanguishene
549-8912