

STEEL CRADLES FOR SAILBOATS

Custommade for Chrysler
22' & 26'

Adjustable to fit similar hulls
Prices \$474. to \$574.

DOUBLE 'A' MARINA

Port Severn 538-1127

Sailboat, Tempest 17 feet, cuddy cabin, trailer, motor. Phone 526-8663. 73-74

1979 — 24 ft Concord fiberglass cruiser 240-D Series, 260 Mercury outdrive unit, 350 cu. in. Chev. engine, sleeper seats, cuddy cabin, head, map light, swim platform, camper top. Never titled. Call Des Carpenter - 526-3777. 74

MOTORCYCLES

Kawasaki KZ-200, new in 1980, asking \$700 or best offer, 534-3889 after 4:30. 74

250 Kawasaki 1974, excellent condition, low mileage. Asking \$600. Phone 526-5566. 73-74

1974 Rupp Nitro 400 snowmobile with hooker head. A-1 condition, asking \$250. Call 534-3889 after 4:30. 74

WANTED TO RENT

Single professional man requires 1 or 2 bedroom apartment, close to downtown Penetanguishene. Must be clean and quiet. Call 549-2012 days. 73-74

FOR RENT

2 bedroom apartment close to Penetanguishene General Hospital. Fridge and stove included. Available Oct. 1, 1980. Call 526-2227 or 549-8427. 73-74

Two storey flat downtown. Six rooms, 2 baths, available immediately, \$350 including utilities. Phone 526-5351. 73-74

Basement apartment available immediately. Downtown, private entrance, \$225 including utilities. Phone 526-5351. 73-74

Victoria Harbour sleeping room for working person, kitchen facilities available. Call 534-3324 after 5. 73 to 76

2 bedroom fully furnished cottage on the water, Crescentwood Beach, oil furnace, 3 piece bathroom, Sept. 15 to June 15, 1981 \$200 per month 549-2342. 72,73,74

Why mess up your house, rent the Wyevale Orange Centre for your party, dance or other functions. Call 322-2647 for rates. 117E

1 and 4 bedroom apartments in large house across from Brooklea on Hwy. 27. One bedroom \$175, four bedroom \$275 per month, everything included. Available Sept. 15. To view, call 526-5683 after 5:30. 73-74

2 bedroom house centrally located in Midland, \$250 per month plus utilities. Phone 526-6135 after 6 p.m. 74

Unfurnished 2 bd basement apartment, Main Street, Penetanguishene, available October 1st, 1980. Call 549-3211 between 9 a.m. and 5 p.m. 72,73,74

REAL ESTATE

Sacrifice sale, Midland, three bedroom home in immaculate condition. Must sell. Owner already transferred. Quiet dead end street, view of Georgian Bay from elevated walk-out cedar deck. Priced right \$39,000. 10 per cent mortgage, 526-9873. 72-73-74

ESTATE SALE
Open House
Sept. 13 and 14

2 bedrooms, permanent mobile home overlooking Georgian Bay in Edwards Mobile Home Estates, Lot Number 21, Midland Point. Paved drive, appliances and large storage shed. Immediate possession. Must be sold, make offer, 534-7047. 73, 74

1 bedroom apartment, fireplace, laundry facilities, fridge and stove, utilities. Phone 526-4997. 74-75

REAL ESTATE

2 bedroom home in Port McNicoll. First and last month rent, \$200 per month. Call 534-3416 after 4. 74

REAL ESTATE

AUGUST SALES LEADER



HELMUT BOSCH

Bryson McQuirter Ltd., Realtor

Congratulations to Helmut Bosch for winning the sales leader of the month award for McQuirter Real Estate.

Helmut was successful in selling close to an average of 3 properties per week in August. This is an exceptional achievement in our profession and an excellent example of the hard work Helmut is capable of providing for his clients.

If you require the services of a professional, why not call Helmut at 526-9391.

1975 14' Aluminum boat and 40 horsepower Johnson electric
Phone 549-2762

12 ft fiberglass plus a 25 hp Evinrude motor, gas tank. Asking \$250. Call 534-3889 after 4:30. 74

CARS & TRUCKS

1974 Bronco 4 x 4, V-8 auto, many new parts. Drivable but needs some transmission work, \$650 uncertified, 534-4184. 73-74-75

1977 FORD SUPERCAB

rebuilt motor fibreglas cap. Best offer.

PHONE 549-2762

1971 Cutlass \$600 or best offer. Call 526-4479. 73-74

1978 Z28 Camaro 350 four-barrel, 4-speed, red with black interior, AM/FM cassette, tilt wheel, pulse wipers, air shocks. Asking \$6500 or best offer. Call Tom 526-6686 or view Ron's Gas Bar. 73-74

1976 International 1700 Series, 33,000 original miles, 20 ft aluminum box. Asking \$15,000 or best offer. Excellent condition, 526-4467. 73 to 76

1973 A.M.C. Hornet station wagon, 6 cyl., auto., good condition. Asking \$875, certified. 534-3754. 74

1977 Ramcharger 4 x 4, 318, p.s., p.b., auto., good condition. Certified. Wholesale price \$3795, 40,000 miles. Allen's Autos, Toronto - 416-881-8895. 74-75

1975 Ford Torino Elite, V-8 automatic, p.s., p.b., vinyl roof, good condition. Call 526-3380. 74

1975 Chev. truck with truck cap, A-1 condition, V-8 standard, new tires, clutch, brakes, plus paint job for \$2,500. Phone 534-7707. 72-73-74

A. E. LePAGE

(ONTARIO) LTD. REALTOR

We'll help make it easy

\$31,900 - NEWER RURAL HOME
Located close to town, steps from sandy beach with a view. Over 1/2 acre lot. Becky Marchildon.

WATERFRONT - SANDY BEACH
80 feet at Georgian Sands. Well landscaped lot lined with large cedars. Many walkout doors to deck plus cozy fireplace, \$79,900. Becky Marchildon.

IMMEDIATE POSSESSION
\$58,500 — With terms for this brick home with zoning for duplex, 1 mile from Midland in residential area. Modern facilities. Becky Marchildon.

MIDLAND DOWNTOWN CORE
Ideal business investment! \$52,900. Well maintained 2 storey building, terms. Becky Marchildon.

READY FOR BUILDING - \$4,900
And up cottage building lots, steps to Georgian Bay. Well treed, level sites. Becky Marchildon.

UNDER 2 MILES FROM MIDLAND
26 miles off the Balm Beach Road with over 500 ft frontage, excellent site. Becky Marchildon.

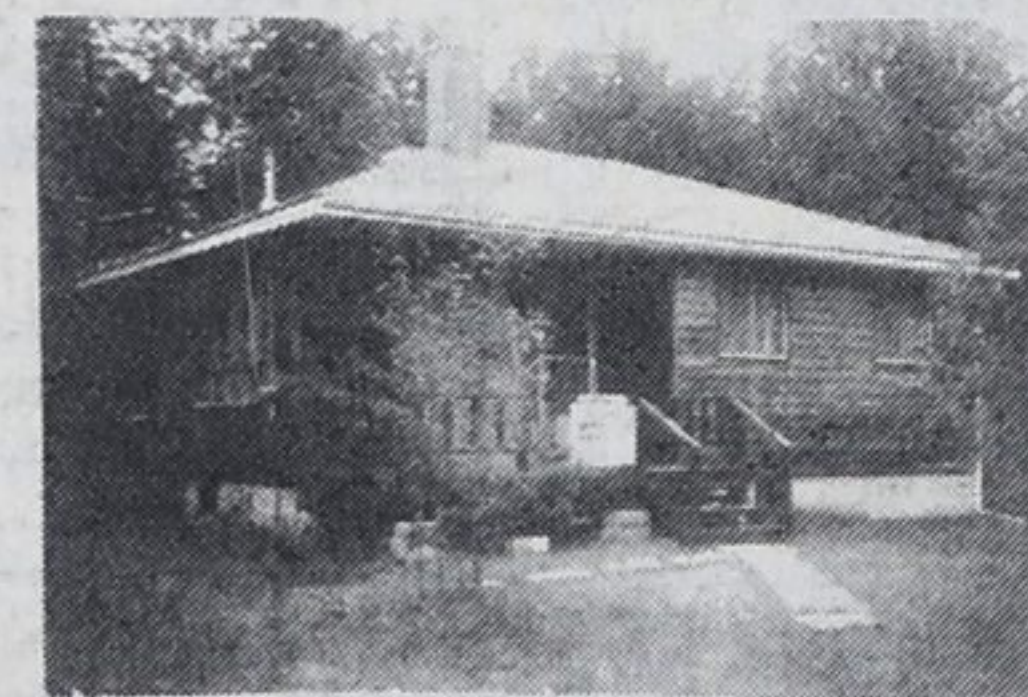
CLEARWATER BEACH
Spacious retirement or recreation home opposite right of way to sandy beach, beautiful large wooded lot. Listed at \$38,500. See it. Clarence Lee.

SMALL HOLDING
Beautiful 5 acres for your future home. Listed at \$23,000 and owner will view all offers. Clarence Lee.

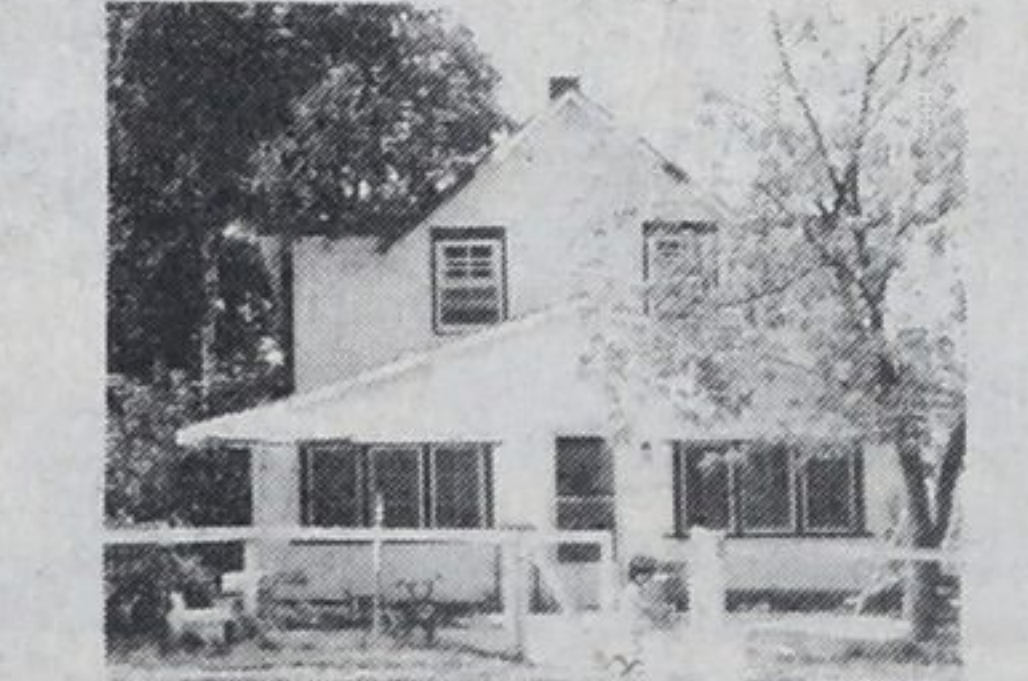
JUST LISTED FOR \$36,000!
Midland home on lovely area of Victoria Street in Midland, double lot of 121 x 200 ft, great potential. Call Debbie Cote.



VACATION HOME AT GEORGIAN SANDS
\$43,900 — Will buy a new 3 bdrm bungalow on large lot. Full basement with garage. Well insulated with electric heat. Clarence Lee.



MODERN HOME ON 10 ACRES
Secluded location near sandy beach. Fully insulated with electric heat. Fireplace. Drilled well. All for \$65,000. Make your offer. Clarence Lee.



\$20,000 - VICTORIA HARBOUR
3 bdrm home, living room, separate dining room, eat-in kitchen, 4pc. baths, close to schools and shopping, great value, hurry, call Debbie Cote.

PEEK-A-BOO POINT WINTERIZED COTTAGE
For \$29,900! 3 bedrooms, 4 pc. baths, living room with Franklin fireplace, nice size 80 x 130 foot lot, furniture included. Call Debbie Cote.

PENETANG ACREAGE!
Located just off Scott Street, almost six acres, asking price \$69,900. Great location! Call Debbie Cote.

\$42,900 - MIDLAND DUPLEX
Good mortgages at 11 1/4 per cent, 3 bedroom home with 1 bdrm basement apt. Laundry room and storage area. Lots of parking space available.

\$59,900 - BRICK AND AL-SIDING
Sidesplit 4 bdrms, finished family room with brick fireplace, eat-in kitchen, dining area and living room. Call Debbie Cote.

\$47,000 - CEDAR STREET!
Lovely area with prestigious homes, 4 bdrms, large living room, eat-in kitchen, nicely landscaped lot, full high basement. Call Debbie Cote.

CHARACTER PLUS!
\$29,900 — 3 bedrooms all with closets, lovely 60 x 150 ft lot, full basement with walkout. Debbie Cote.

VENDOR HOLD MORTGAGE
Reasonable down payment. Great opportunity for seasonal investor. 8 rental cottages. Balm Beach, \$74,900. Debbie Cote.

\$69,000 - MIDLAND 4 PLEX
Brick 2 storey fenced lot, paved parking 2-2 bedroom apts, separate meters, electric heat, 2 bachelor apts, fully rented, security system. Debbie Cote.

Sales staff

Joyce Bingley	361-2696	Howard Heacock	322-1753
Marjorie Contois	534-3634	Bob Sweezy	526-3985
Debbie Cote	526-5553	Don Tannahill	534-3106
Carl Davis	322-2962	Mary Thompson	533-3246
Laurie Gendron	756-2475	Gord Touet	322-2245
Clarence Lee	361-2599	Paul Vollick	756-2731
Becky Marchildon	526-3980	Audrey Wristen	534-3998
Barbara Giles	538-1028	Frank Wristen	534-3998
Elmer Strongitharm	686-7960	Jack Scott	361-2409
Nancy Trowell	636-7957	Claude Bingley	361-2696
Bryan Davidson	Appraiser	Gord Hanna	Manager

A.E. LePage Highway Mall
Highway 27, Midland 526-4271
Coldwater 835-3343
Elmvale 322-1381