

Classified

FARMER'S MARKET

Ford 8-N tractor. Good condition. Wyevale - 322-1446. 57

Strawberries - Pick your own, Foster's Farm, Midland, 1 mile west of Midland on Balm Beach Road. Turn north at signs. Phone 526-2708, 526-8149. 57

Classified ads get results

WANTED TO RENT

Teacher's family requires modern 3 bedroom house in Midland by mid August. Call 322-1816. 55,57,59

Adult family wants to rent 3 or 4 bedroom house in Midland. Abstainers. Phone 526-5521. 57-58

Responsible male requires apartment or winterized cottage for Fall and Winter months, Midland area. Call 526-9703 or write Box 305, 676 King St., Midland. 57-58

FOR RENT

A lower duplex, 2 bedrooms, dining-room, living-room, eat-in kitchen, stove and fridge. In Midland, available Aug. 1. Phone 549-2613 after 5 p.m. 55-56-57

Why mess up your house, rent the Wyevale Orange Centre for your party, dance or other functions. Call 322-2647 for rates. 11TF

Bachelor apartment for rent immediately, Main St. Penetang. Phone 549-8270. 55-56-57

Counac Beach, modern 3 bedroom cottage, completely furnished. Available July 18, \$225 per week. Call 526-4009. 56-57-58

House for rent in Lafontaine, \$275.00 per month. 4 bedrooms, heat & hydro not included. Call 533-2303 between 7 p.m. to 9 p.m. 56 to 59

2 bedroom cottage for rent on Christian Island. July and August. Call 533-2303 between 7 p.m. to 9 p.m. 56 to 59

Midland, industrial units for small business. Area 1200 square feet. 1 month rent free. Phone 526-7662. W13TF

Elmvale three bedroom duplex, 3 appliances, carpet throughout, 2 bathrooms, own yard. \$350. 728-4847. 53, 55, 57

One bedroom apartment, self contained, newly decorated. Adults only. No pets, Elmvale. 322-1171. W53 to W67

3 bedroom mobile home at Bramhall Park. First and last month's rent required. Phone 526-2989, 534-7110. 55 to 58

4 bedroom log cottage \$375 weekly and 2 bedroom luxury cottage \$300 weekly. Fully equipped kitchen, electric and plumbing, bedding, swim, sail, canoe, hike, private tennis court, lake. 705-382-6520. W55-W57

FOR RENT

3 bedroom house with extra family room, on September 1, \$250 monthly plus utilities. First and last month rent required. Phone 526-6110 after 5. 57

1 bedroom apt for rent, centrally located in Penetang, fridge, stove and all utilities included, \$225 per month, older couple or person preferred. Phone 549-7136 after 6 p.m. 57-58

Midland - 2 bedrooms and 1 bedroom apartment, \$275 and \$260. All utilities included. References required. Available immediately, 534-3630. 57-58

Second storey 2 bedroom apartment. Phone 526-9328, 9 to 5, Monday to Friday. 57-58-59

Garage for rent, Amelia St., Elmvale. Call 322-1334. 55-57-59

FOR RENT

1 bedroom adult apartment, Penetang. Heat included, centrally located. Call 549-3629 after 5 p.m. 57 to 60

Parkview Apartments Now Renting

One and two Bedroom Apartments, Sauna, Exercise Room, Games Room, Hobby Room, Recreation Room, Large Laundry Room, Underground Parking, Separate Lockers, Children Welcome. 526-7998

676 King St. Midland W85TF

2 bedroom apartment. Fridge, stove, hot water and heat included. Available immediately. Phone 526-3701 between 8 and 5. 57-58

REAL ESTATE

For Sale - Northlander Mobile, 22 Bert's Rd. Smith's Camp. Included, frig, stove, drapes, dishwasher, hutch, cathedral ceiling and vegetable garden. Call Georgian Bay Real Estate at 526-9366. 44 TF

3 bedroom mobile home at Bramhall Park. Owner will take back mortgage for qualified purchaser. Phone 526-2989, 534-7110. 55 to 58

SOLD
Player
REAL ESTATE LIMITED BROKER
PHONE 322-1991
ELMVALE ONT

WATERFRONT COTTAGE



In mint shape! With boathouse, nicely landscaped. Lot 50 x 185 ft. 3 bedroom. Make an offer. 7-P.

SMALL ENGINE REPAIR SHOP

Including metal lathe, motor test tank, drill press and many other extras. Plus - a two bedroom waterfront cottage. Estate sale. Make an offer. Financing at 12%. 2-P.

WOODLAND BEACH

A lovely 3 bedroom bungalow, close to beaches for year round living at \$39,900. Including stove, fridge and deep freeze. 3-P.

FARM PROPERTIES



198 ACRE FARM
With completely restored brick 4 bedroom house, barn and driving shed. Open to offers. Financing available. 4-P.

FORTY-EIGHT ACRES VACANT LAND
With ten acres of hardwood. Spring fed creek, 15 down, asking \$48,900. 7-38.

BRICK 2 STOREY HOME IN PHELSTON

3 bedrooms, completely modernized, asking \$45,900, with financing available. 7-39.

SCHOOL HOUSE!



On 1 acre of treed land, 10 miles north of Barrie, 27 Highway frontage. 3 bedrooms, reduced to \$39,900 - a good buy! 6-P.

3 BEDROOM BUNGALOW

Close to shops, schools and rec center. Big deck, finished rec room, 1 car attached garage, 3 yrs. old. 1-P.

Nights & Weekends 322-1253



Member: Midland Penetang District Real Estate Board

BRYSON McQuirter LIMITED REALTOR

PENETANG 549-3104
4 Robert St. W.



VIEW OF BAY
This large home has been renovated throughout, full basement, custom living room, fireplace, income from upper apt, minutes from town, must be seen to appreciate. Asking \$49,900. Excellent financing. Ask for Henry Light.

OLIVE ST., DO IT YOURSELF

MIDLAND
MLS - Industrial lot with older home, in need of much work, view of Geo. Bay. Try an offer. Asking \$21,000. Henry Light.

MIDLAND EXECUTIVE HOME

MLS - On quiet st, very clean and attractive brick bungalow, finished family room, many extras. Ed Trottier. \$68,000.

CHALET STYLE BUNGALOW

MLS - On quiet lot near beach, very attractive. Ron Hamelin. Reduced, now only \$42,900.

4 ACRES PLUS

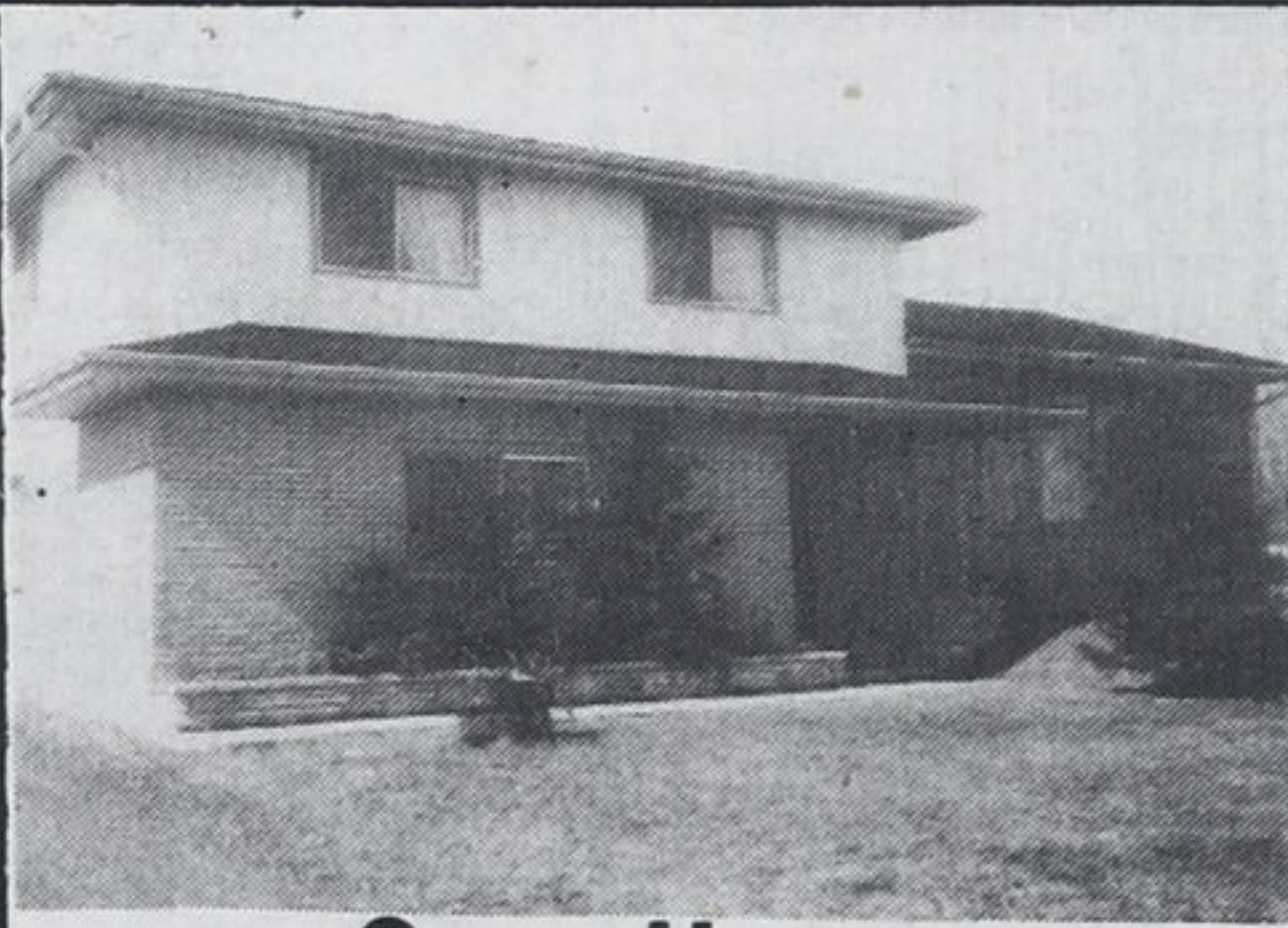
MLS - Large ranch style bungalow, plus barn and workshop, situated close to town on level 4 acre lot. Now reduced to \$84,500. Ron Hamelin.

GEO. BAY ESTATES

MLS - Large bungalow, landscaped lot, view of Geo. Bay. Steps to swimming and fishing. All for only \$42,500. Henry Light.

FOR THAT EXTRA INCOME

Large year round store with 5 bdrm house attached. Only commercial spot for miles, growth potential excellent, fully equipped and stocked, extra large lot. Ron Hamelin.



Open House
Sun., July 20th - 1 to 4:30 p.m.
King St., South of Hwy. 12

Executive style home, spacious, large rooms throughout, breezeway separating double garage and home, large lot, country living - \$79,900.

LOG COTTAGE WATERFRONT

P-48 - Ideal location at end of 14th Con., sandy beach, cottage has 2 fireplaces, patio, etc. Must be seen. Reduced to \$65,000. Ron Hamelin.

THE ALMOST FARM

No chores but all the farm atmosphere you may want. This excellent 4 bedroom home on a 1 acre lot, features a large family room with fireplace, modern kitchen and bath, etc., etc., must be seen to appreciate. Asking \$69,900. Terms. Ron Hamelin.

PENETANG EXECUTIVE HOME

MLS - Spacious 4 bedrooms, split entry bungalow, finished on both levels, wall to wall fireplace in family room, patio doors to back deck on both levels. Price reduced to \$69,000. Henry Light.

KING ST SOUTH MIDLAND

MLS - Fantastic large home, ideally situated near industrial area. For the executive that wants to be close to his week. Country living at its best. Asking \$79,900. Henry Light.

LOTS AND ACREAGES

50 acres, hardwood bush, view. \$50,000 - Tiny.

26.8 acres, close to town, 2000' road frontage, \$35,000 - Tiny.

19 lot subdivision, fantastic view, make offer - Tiny.

5 acres, plus home in Penetang, dry treed lot.

6 acres, Giants Tomb Island - \$33,000.

1 and 2 acre building lots, Giants Tomb Island (waterfront) - \$10 - \$15,000.

Building lot, Midland, Ont. Only \$9,900.

Building lot, Highway 12, Waubaushene. Asking \$9,500. Flexible.

Building lot, Penetang - \$10,000.

3/4 acres with large cement block building, Highland Point - \$29,000.

COTTAGE OSSOSSANE BEACH

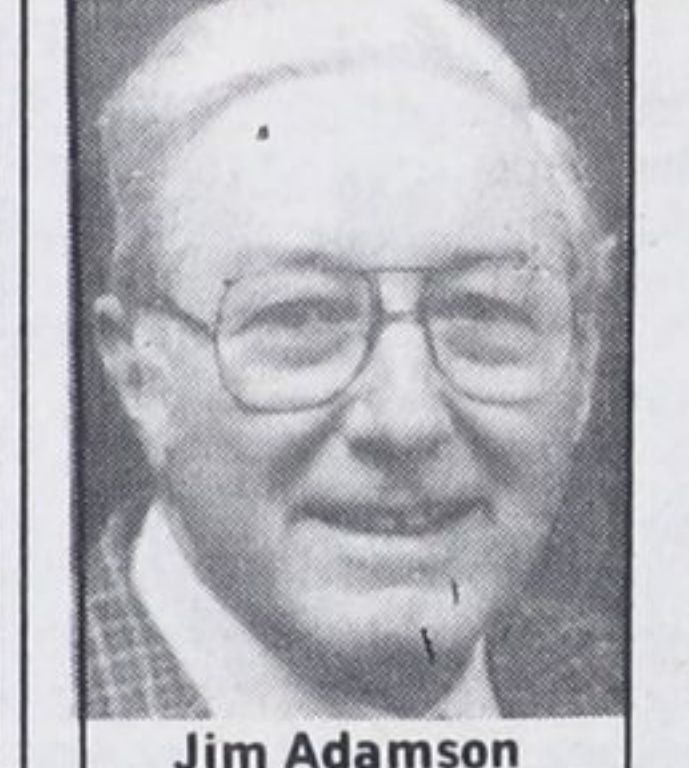
MLS - 3 bedrooms, kitchen and living room, good lot, garage, close to store, and beach, asking \$31,000. Henry Light.

SUNNYSIDE MIDLAND

P-52 - The price is right for this 3 bedrooms, very neat home, features garage, family room, high dry basement, fast possession. Asking \$43,500. Henry Light.

REAL ESTATE REAL ESTATE

Sales Leaders
BRYSON McQuirter
LIMITED REALTOR



Jim Adamson



Bob Hogeau

Bryson McQuirter is pleased to announce that Jim Adamson and Bob Hogeau were top sales representatives for the month of May and June respectively. Both Jim and Bob worked extremely hard and deserve the congratulations they received from the rest of the staff. As always McQ. is more than pleased to spring for dinner for our award winners and their spouses as a small token of appreciation. 56, 57

Family Trust
FAMILY TRUST CORPORATION REALTOR

TINY TWP

A double lot with a three bedroom cottage, well treed and on a year round road. Plus a vacant lot. Owner is ill therefore must sell. Open house July 14/80, this property is between Con. 12 and 13, Nottawaga Beach.

FLOS TWP

Estate property, 100 acres 60 in mixed bush, balance workable, has a survey plus two road frontage. Executor's anxious to settle estate.

VILLAGE OF ELMVALE

A brick home centrally located, 3 bedrooms and new gas furnace plus garage. A corner lot, three bedroom with basement, best of garden land. V.T.B. first mortgage. Try your offer you could be surprised.

MEDONTE TWP

Something that is hard to get now. Four acres of bush, highway frontage, surveyed. The other nine acres, plus two creeks, surveyed. Both vendors will take back mortgages. Telephone: Reg. O. Archer - 705-322-2423 or 705-429-3051. 57