

Classified

Classified Word Advertising Rates

Up to 18 words	
(first insertion)	\$3.00
(second insertion)	\$2.80
(third insertion)	\$2.70
(subsequent insertions)	\$2.70 ea.
Additional words	.10

Classified Ads
get results

PETS & LIVESTOCK	MOTORCYCLES	BOATS & MOTORS	BOATS & MOTORS	BOATS & MOTORS	BOATS & MOTORS
Siberian Husky Pups, black and white, C.K.C. registered championship line. Brown eyes and shots. Call 726-3839. 55,57,59	1976 Honda 750-F. Excellent condition \$1500. Phone 526-3393. 57-58	16 ft. Blondin boat for sale 1979, 70 h.p. merc. and trailer. Phone 549-8656 56-57-58	16 foot J-Craft, 125 horsepower Johnson Outboard completely refurbished. New power trim and wiring. Ski-tripod and skis included. Excellent condition. Asking \$3,500. Phone 361-2148. 57	16 1/2 ft Mahogany with 50 Johnson, \$650. Call 534-3485. 57	DS-20 sailboat, excellent condition, fully equipped with galley, heads and all sails, sleeps 4. Priced at \$5,500 to sell immediately. Must be seen. Call anytime K. W. Camp Site 538-2243. 57-58
Beagle dogs for sale. Phone 322-1226. 57	1975 Honda 550-4, 4,000 miles. Phone 526-4777. 57 to 60	15 hp Game Fisher motor and 14' aluminum boat. Used only one season. Call 835-2327. 55, 57, 59		1978 16 foot Sunray with 120 h.p. in-board/outboard motor, Merc-Cruiser and equipment. Call Midland Marina - 526-6391. 57 to 70	

A. E. LePAGE

(ONTARIO) LTD. REALTOR

We'll help make it easy

WATERFRONT PROPERTIES



"A RARE FIND"

\$52,500 — 1/2 down V.T.B. 1st on this 3 bdrms, furnished cottage, sauna, 2 boats and motors, 347 ft shoreline on Georgian Bay. Nancy Trowell - 705-835-3343.



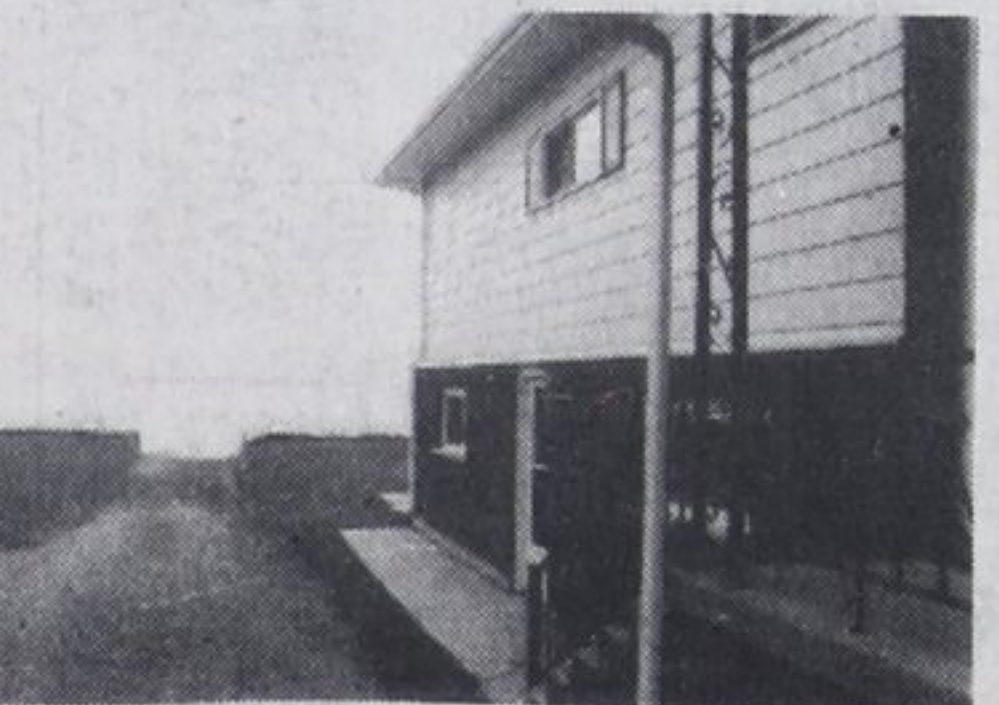
RETIREMENT DREAM

\$95,000 — Will buy 120 acres with modern bungalow, barn, mini lake and chalet. For nature lovers. Elmer Strongitharm - 705-686-7861.



5 BDRM INSULATED RETREAT

\$47,200 — 50' x 135' treed lot on Georgian Bay near Midland. Furnished. Bob Sweezy.



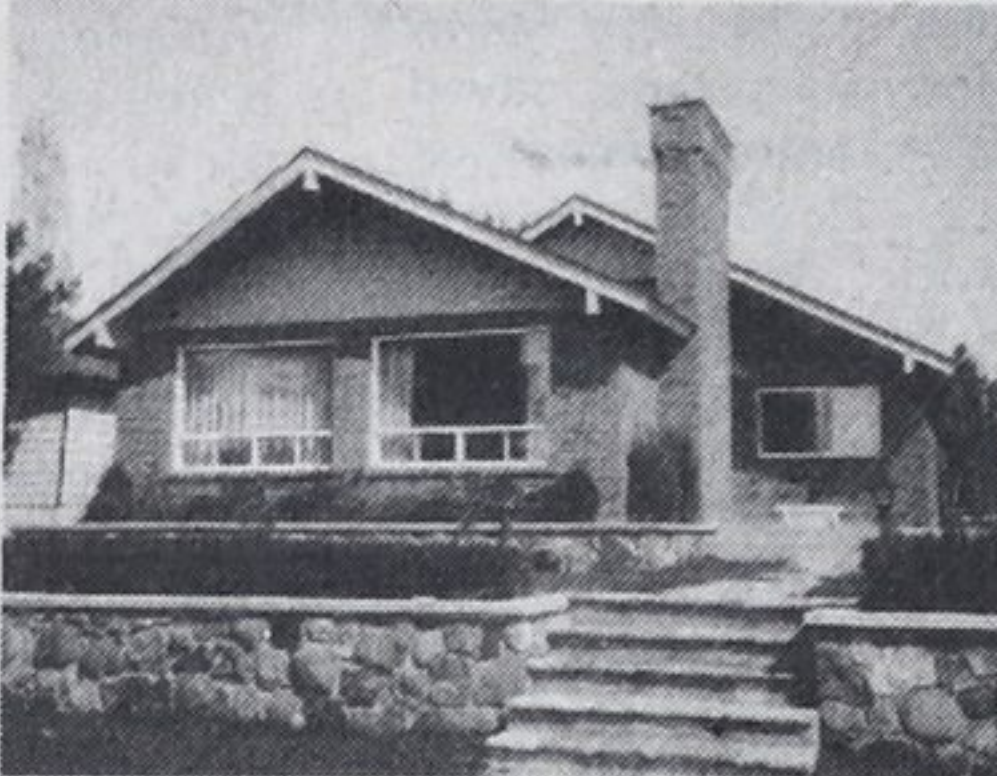
4 BEDROOMS, 2 BATHS, BRICK AND ALUMINUM BACKSPLIT

On Georgian Bay with fantastic view. Near Midland in the heat of Huronia vacation land. Reduced to \$63,900. Clarence Lee.



SEVERN RIVER RETREAT

Swim-fish-boat! 3 bedroom furnished cottage. Boat, motor and peddle boats included. Reduced to \$35,900. Elmer Strongitharm - 705-686-7861.



ALLENWOOD BEACH WATERFRONT

\$175,000 — 4 bdrms brick homes, cut-stone privacy walls, massive fireplace, 3 baths, rec. room, sauna, wine cellar and an in-ground pool. Carl Davis.



EXEC. GEO. BAY WATERFRONT

\$189,000 — Set among tall green trees, this spectacular home has many features like 35 ft family room walkout, deck, bar, fireplace. Audrey Wristen.

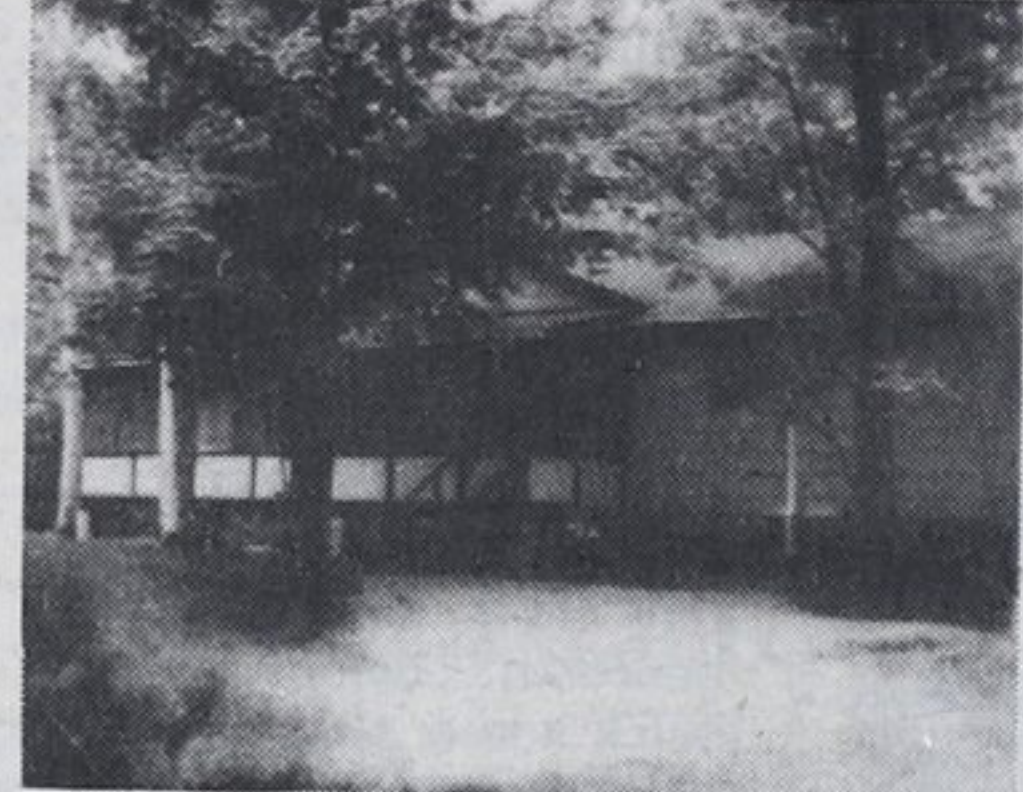


WATERFRONT BEAUTY - \$57,500

2 fully equipped vacation income cottages on a large well treed lot near stores and amusements, 3 bdrms and 4 bdrms, good swimming sandy beach. Jack Scott.

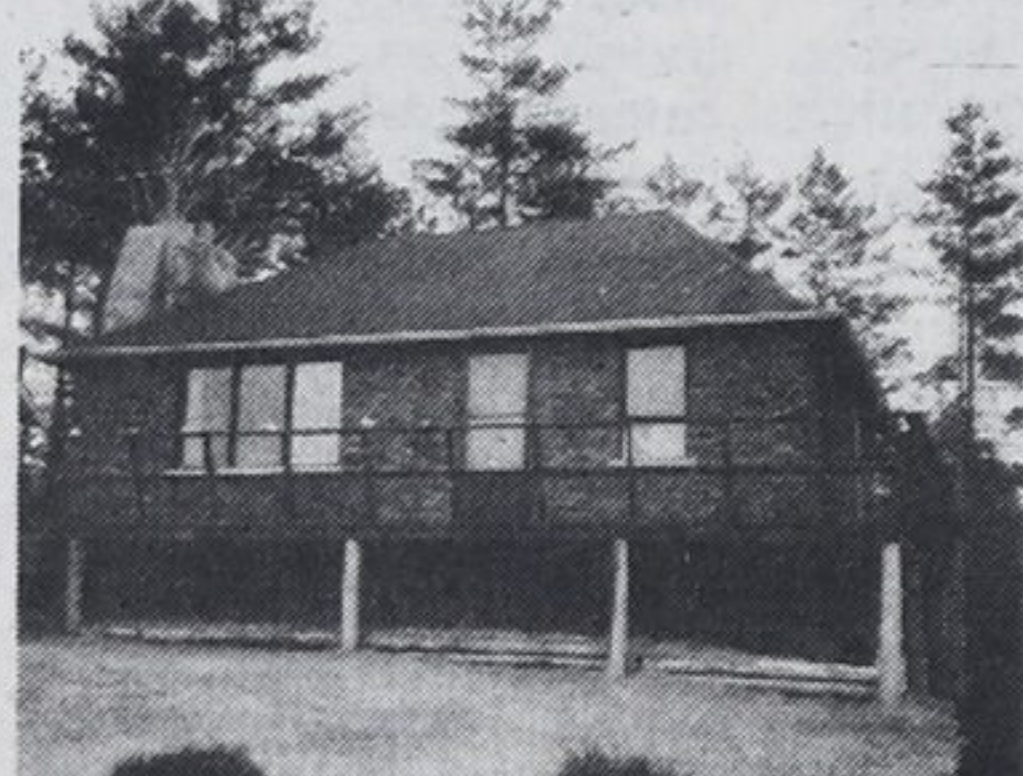
\$61,900 - WATERFRONT HOME

3 bedrooms, winterized home on parklike groomed lot. 84 ft sandy beach for the children. Excellent boating and fishing waters. Frank Wristen.



MACLEAN LAKE - WINTERIZED

Fully insulated cottage. Approved septic, well, steel garage or workshop, large lot, asking \$44,500. Elmer Strongitharm - 705-686-7861.



NEW WASAGA BEACH - RETREAT

\$69,500 — Elegant 2 bedroom waterfront residence, fireplace, family room, bar, wrap-around deck, scenic, good boating and fishing. Carl Davis.



\$65,500 - BAXTER LAKE

This is the kind of place to make a commercial. Private, well landscaped, 3 bdrm insulated, stone fireplace in 23 ft living room. Audrey Wristen.

CEDAR POINT WATERFRONT LOT

\$45,000 — Approx. 103 ft frontage on Georgian Bay. Depth of 373 ft. Call Marjorie Contois.

\$200,000 - 43 ACRES ON ISLAND

3 insulated cottages for summer and winter recreation. Close to Delawanna Inn. Great area for swimming, fishing and boating. Marjorie Contois.

WOODLAND BEACH WATERFRONT

\$45,900 — Safe sandy shore, 3 bdrm cottage, guest cabin, 10 per cent mortgage. Gord Touet - 705-322-1381, Elmvalle.

\$41,200 - SANDY BEACH

Well treed site, has dock and fantastic sunsets. Maureen Beach on Georgian Bay. Bob Sweezy.

100' LOT WITH COTTAGE

Clearwater Beach, north of Penetanguishene. 2 bdrms, older cottage with newer septic. \$59,200. Bob Sweezy.



SOMETHING SPECIAL - \$149,900

New extra large brick home on 9 acres. Private canal into Georgian Bay. Horse barn and paddock. Top quality with many extras. Near Midland. Clarence Lee.



SNUG FOUR SEASONS - \$41,900

Fisherman's paradise, also caters to swimming and winter sports. Aluminum siding, 3 bdrms, furniture, closed in porch and deck. Audrey Wristen.



\$53,200 - ALL CEDAR COTTAGE

100' frontage on beautiful Farlane Lake. 3 bdrms with fine vista. Furnished. Bob Sweezy.

MIDLAND POINT CUSTOM BUILT

\$165,000 — 100 ft landscaped waterfront. Spacious principle rooms, rec. rooms, separate studio with workshop, sauna. J. Bingley - 705-526-4272.

PICTURESQUE VIEW

Watch the sunset from this Maclean Lake, 3 bedrooms, furnished cottage. Boathouse 2 boats and motors. \$49,500. Elmer Strongitharm - 705-686-7861.

CHEAP BUT ATTRACTIVE

Waterfront lot on the trent-severn system. Only minutes by boat to this quiet bay. Lots of mature trees. \$7,200. Elmer Strongitharm - 705-686-7861.

SANDY, SANDY BEACH

\$37,900 — 82' x 252' building site at Lafontaine Beach. Bob Sweezy.

Sales staff

Joyce Bingley
Marjorie Contois
Debbie Cote
Carl Davis
Laurie Gendron
Clarence Lee
Becky Marchildon
Madeline Relf
Elmer Strongitharm
Nancy Trowell

361-2696
534-3634
526-5553
322-2962
756-2475
361-2599
526-3980
526-3373
686-7960
636-7957

Howard Heacock
Bob Sweezy
Don Tannahill
Mary Thompson
Gord Touet
Paul Vollick
Audrey Wristen
Frank Wristen
Jack Scott
Claude Bingley
Gord Hanna, Manager

322-1753
526-3985
534-3106
533-3246
322-2245
756-2731
526-3292
526-3292
361-2409
361-2696

A.E. LePage Highway Mall

Highway 27, Midland

526-4272