

A. E. LePAGE

(ONTARIO) LTD. REALTOR

TAY TOWNSHIP

REDUCED BY \$10,000

Now \$55,900 — 2 bedrooms, solid brick bungalow, cutstone fireplace, built-in oven and stove, 5 acres with a view. Madeline Relf.

\$28,500 - 3 BDRM COTTAGE

300 ft to private beach, eat-in kitchen, Franklin fireplace in living room, single car garage heated. Year round insulated home. Marjorie Contois.

\$36,000 - FOR A LOT OF HOUSE

Brick and aluminum 3 bdrm home in well kept neighbourhood. Fenced-in backyard abuts community playground. 1/2 mile to RCA. Mary Thompson.

\$44,700 - BUSINESS VENTURE

Vasey needs its store and gas pumps going again. Price also includes 2 bdrm bungalow on 1 acre lot. Ask about the many extras. Mary Thompson.

HERE'S A SURPRISE HOME PLUS

\$75,000 — 32 acres of bush, 3 bdrms, 3 baths, sunken living room, open concept kitchen, and dining room, this property A must to see. Unfinished. Madeline Relf.

TRAVELLING TO WORK? STOP

\$40,000 — Try owning this commercial site with 3 bdrm bungalow with attached store plus double workshop. Anxious. Madeline Relf.

72.7 ACRES - OLD FORT ROAD

\$47,500 — A great location approximately 5 miles to Midland. Good roads open year round. 1014 ft frontage. Mixed bush and mature trees. Marjorie Contois.

CASWELL'S BEACH HOME

\$39,900 — 3 bdrm bungalow, full bsmt, fully winterized, large lot, 93 x 253', close beach access. Marjorie Contois.

\$85,000 - SERVICE STATION

Gross over \$113,000. 3 Bay garage with front end equipment, over \$40,000. Stock and equipment included in purchase price. Frank Wristen.

\$7,900 - BUILDING LOT

Lots of room to erect a pleasant cottage, close to Georgian Bay, 66' x 200'. Bob Sweezy.

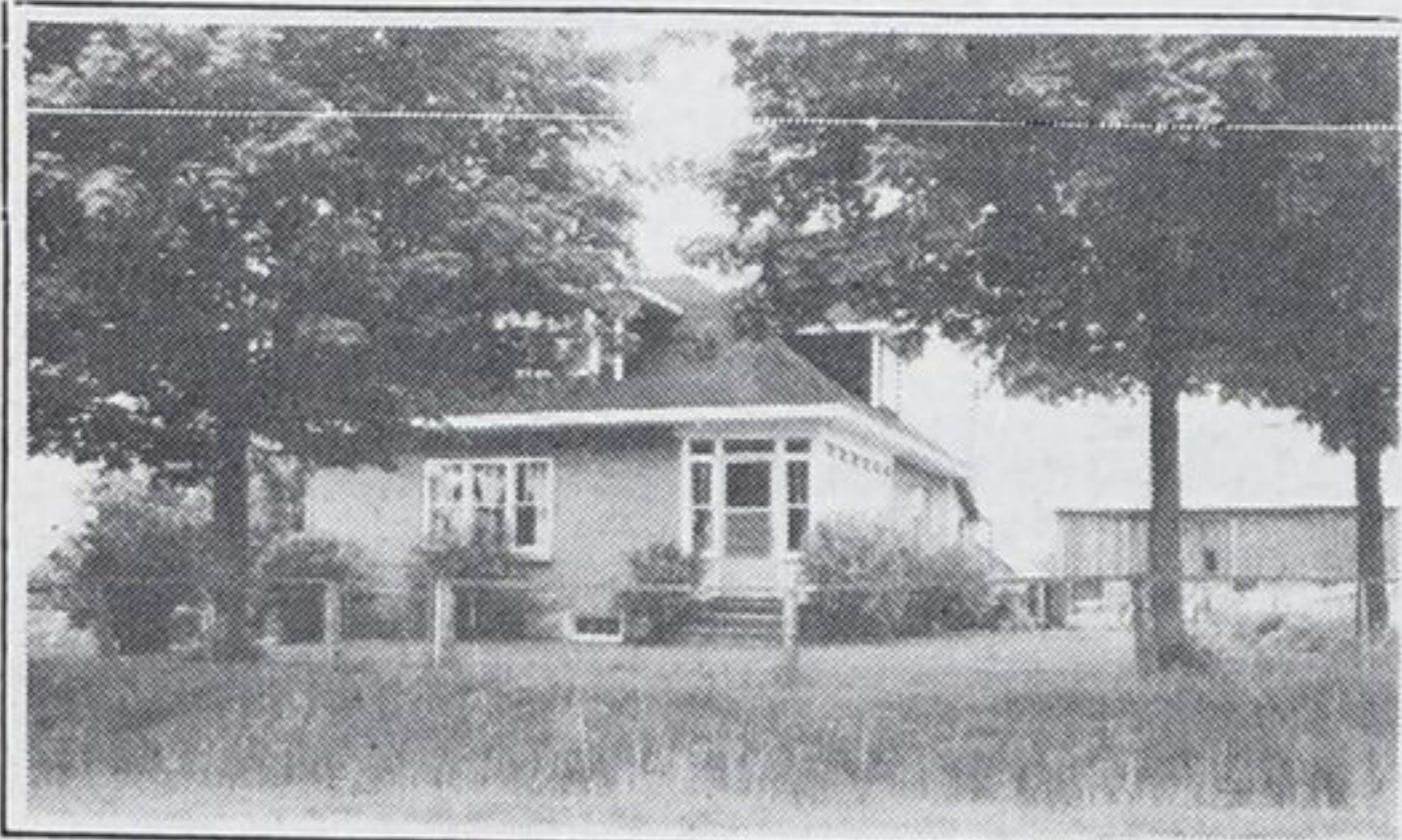
\$27,900 - CLOSE TO BEACH

2 bedrooms, eat-in kitchen, remodelled throughout, heated workshop, large backyard, existing mortgage at 10 1/2 per cent. Marjorie Contois.

\$38,900 - 5 BEDROOM HOME

Eat-in kitchen, separate dining room, living room with fireplace, beautiful hardwood floors, full basement, in Waubaushene. Marjorie Contois.

TINY TOWNSHIP

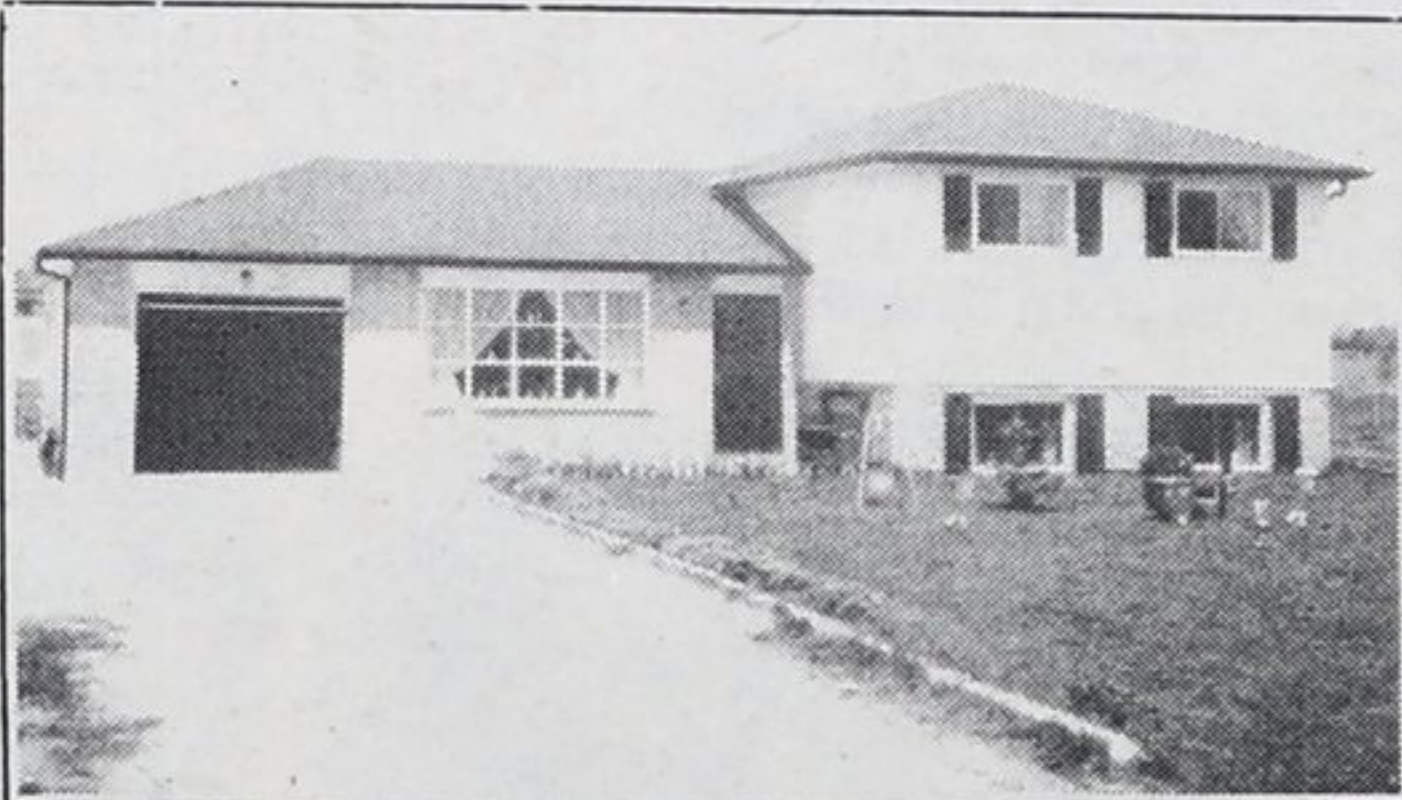


75 ACRE TINY TOWNSHIP FARM

\$20,000 — Down to one mortgage. Mostly good rich workable acreage, large cattle or horse barn, pig barn, in excellent condition. Frank Wristen.

\$99,900 - COUNTRY LIVING

Surrounded by 18 acres of trees and open space this well designed custom home, has full basement, double garage, 2 fireplaces. Bob Sweezy.



YOUNG FAMILY NEIGHBOURHOOD

\$52,500 — Could be for you. 3 bedroom sidesplit, fully finished, large fenced in yard with large garden. Sunroom plus garage. Madeline Relf.

\$89,000 - RECENTLY REDUCED

Unbelievably good value in this 1900 sq ft bungalow and potential business venture in ind. bldg on 150 x 190 ft lot. Near Midland. Mary Thompson.

A. E. LePage Highway Mall 526-4271

Queen St., Elmvale 322-1381

Main St., Coldwater 835-3343

ELMVALE OFFICE



HILLSDALE - "MUST BE SOLD"

\$47,800 — Spotless, three bdrm bungalow on a 100 x 214' lot. Franklin fireplace, 1/2 car garage with cement floor, patio, quiet area. Carl Davis.

FIVE ACRES IN MEDONTE TWP

\$76,000 — Two spring fed ponds, 3 bdrm ranch bungalow, family room, living room with fireplace, full high-dry basement. MLS 360. Gord Touet.



BRICK BUNGALOW AT WAVERLEY

\$49,500 — Tastefully decorated 3 bdrm bungalow with full basement, finished rec. room, 128' x 208 ft lot, paved road frontage. Call Gord Touet.

FOR ECONOMY MINDED PEOPLE

\$19,500 — Two bedroom bungalow with basement, electric heat, 74 x 208 foot lot, handyman's touch is needed, fronts Hwy at Waverley. Gord Touet.

"CHANCE OF A LIFETIME"

\$31,500 — Well maintained, 2 storey, 3 bdrm home, huge eat-in kitchen, separate dining room, on over 2 / 3 of an acre. Waverley area. Carl Davis.

DECLARE YOUR INDEPENDENCE

\$65,000 — Super location for a small business, or a hobby outlet. Three bedroom residence, large workshop with pit. West of Elmvale. Carl Davis.

WASAGA BEACH - ESTATE SALE

\$69,900 — Large two bdrm home with basement, double garage and workshop, 3 rental cottages, 150' x 11' treed lot. Good beach area. Carl Davis.

VICTORIA STYLE HOME

\$86,000 — Elmvale brick 2 1/2 storey, completely renovated, live in maids quarters, 200 x 300 ft lot, stately shade trees. View with Gord Touet.

CENTRAL ELMVALE BRICK HOME

\$46,000 — 3 bedrooms, large eat-in kitchen, den, double garage, verandah, this well maintained home is on a corner lot near the arena. Gord Touet.

EAST OF MIDLAND 15 MILES

\$49,500 — Unequally restored, two storey home with bdlm throughout, modern designed kitchen, patio and a pool. Worth viewing today. Carl Davis.

ORR LAKE NORTH BUNGALOW

\$44,900 — Double wide modular with full basement, finished rec. room, separate dining, 3 bedrooms, carpeted throughout, 100 x 150' lot. Gord Touet.

ORR LAKE INSULATED COTTAGE

\$38,500 — Two bedroom A-frame style with 20 x 24' deck, private treed setting with in-ground pool, fronts paved road on 100 x 150' lot. Gord Touet.

PARADISE POINT - PORT McNICOLL

\$79,900 — Immaculate, brick, general store with two bedroom residence, just completely redecorated, in thriving recreational area. Carl Davis.

LOTS OF LOTS. LOTS OF AREAS

\$13,500 — 100 x 200' Orr Lake - \$13,500.
Bluewater Beach — 75 x 206' - \$12,900.
Woodland Beach — 75 x 200' - \$14,900.
Medonte Township, 3 acres - Many others. Gord Touet.

COLDWATER OFFICE

POWER OF SALE BUNGALOW

Immediate possession. 3 bedroom home in Coldwater with full basement, electric forced air heating on large lot. Brand new. Listed at \$36,900.

NEW HOME NEW LISTING

Quality workmanship and materials. 2 bedroom, full basement with extra roughed in washroom. Close to all amenities in Coldwater. Asking \$41,500.

COUNTRY HOME WITH ACREAGE

Retreat to the country on 55 acres plus 2 bedroom home. Attached garage, small barn. 1 1/2 miles from Coldwater, on paved road. Asking \$47,500.

BUY A LOT - BUILD A HOME

One of the prettiest lots in Coldwater with mature maple, pine, ash and spruce. Away from traffic but close to shopping. Asking \$11,600.

ESCAPE TO THE COUNTRY IN STYLE

\$125,000 — Is all you pay for a beautiful cedar shingle bungalow, set among 25 acres of bush. Close to Orillia and in an area of new homes. Pool and games room are features. Barbara Giles.

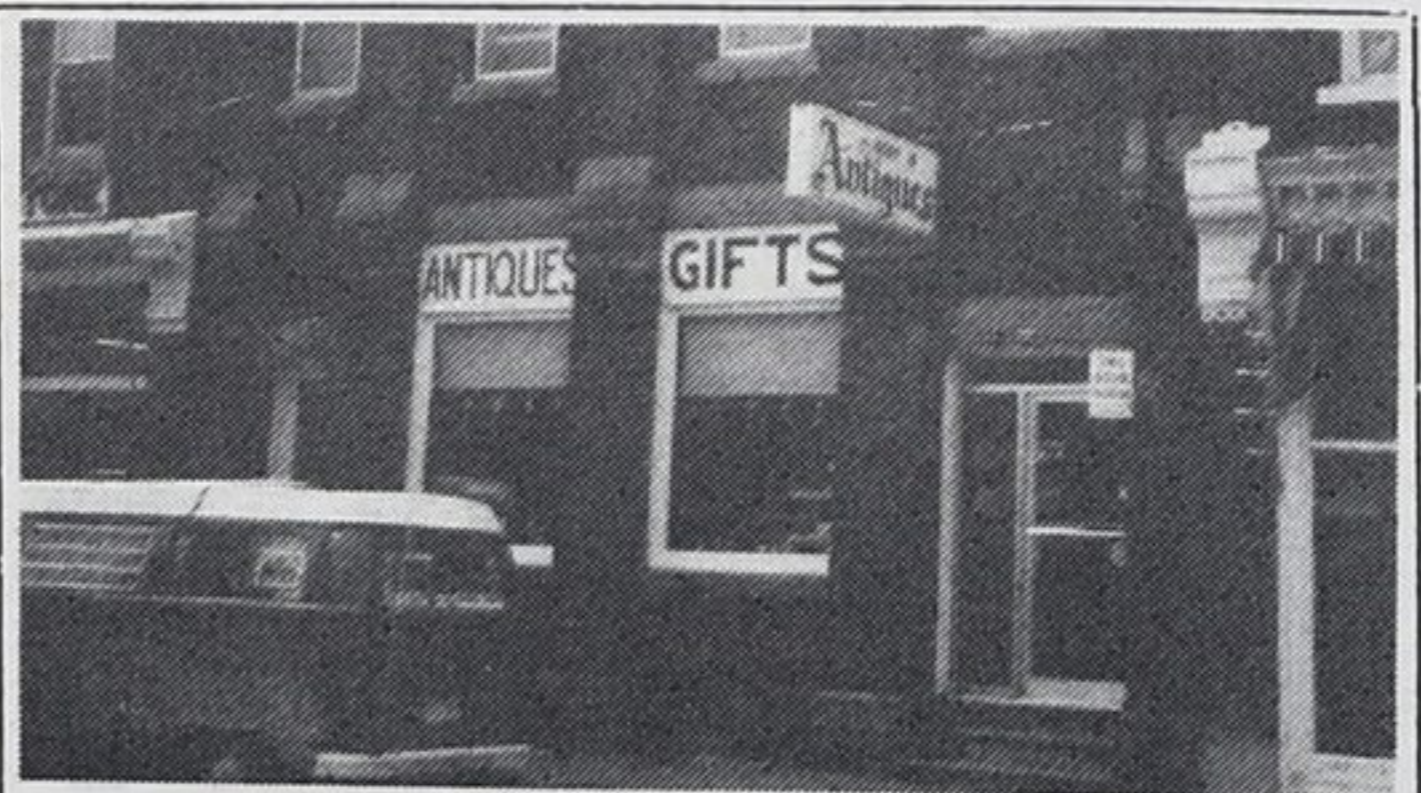


CARPENTER'S DELIGHT

\$18,000 — For this large home in need of loving care, good size lot, with excellent garden potential, close to Fesserton, set back from Hwy. Nancy Trowell.

PRETTY SETTING - LOVELY HOME

\$40,000 — 3 bdrm home, full basement with rec. room and bar. Beautiful pine cupboard in kitchen. Nancy Trowell.



COLDWATER COMMERCIAL PROPERTY

\$54,900 — For 1100 sq. ft of store space. Ideal for retirement couple, immaculate 2 bdrm apt, above full basement with showroom. Nancy Trowell.

A RARE FIND

\$52,500 - 3 bdrms, furnished cottage, sauna, 2 boats and motors, 347 ft shoreline on Geo. Bay near Honey Harbour, 1/2 down VTB. Nancy Trowell.

We'll help
make it
easy

A. E. LePAGE