

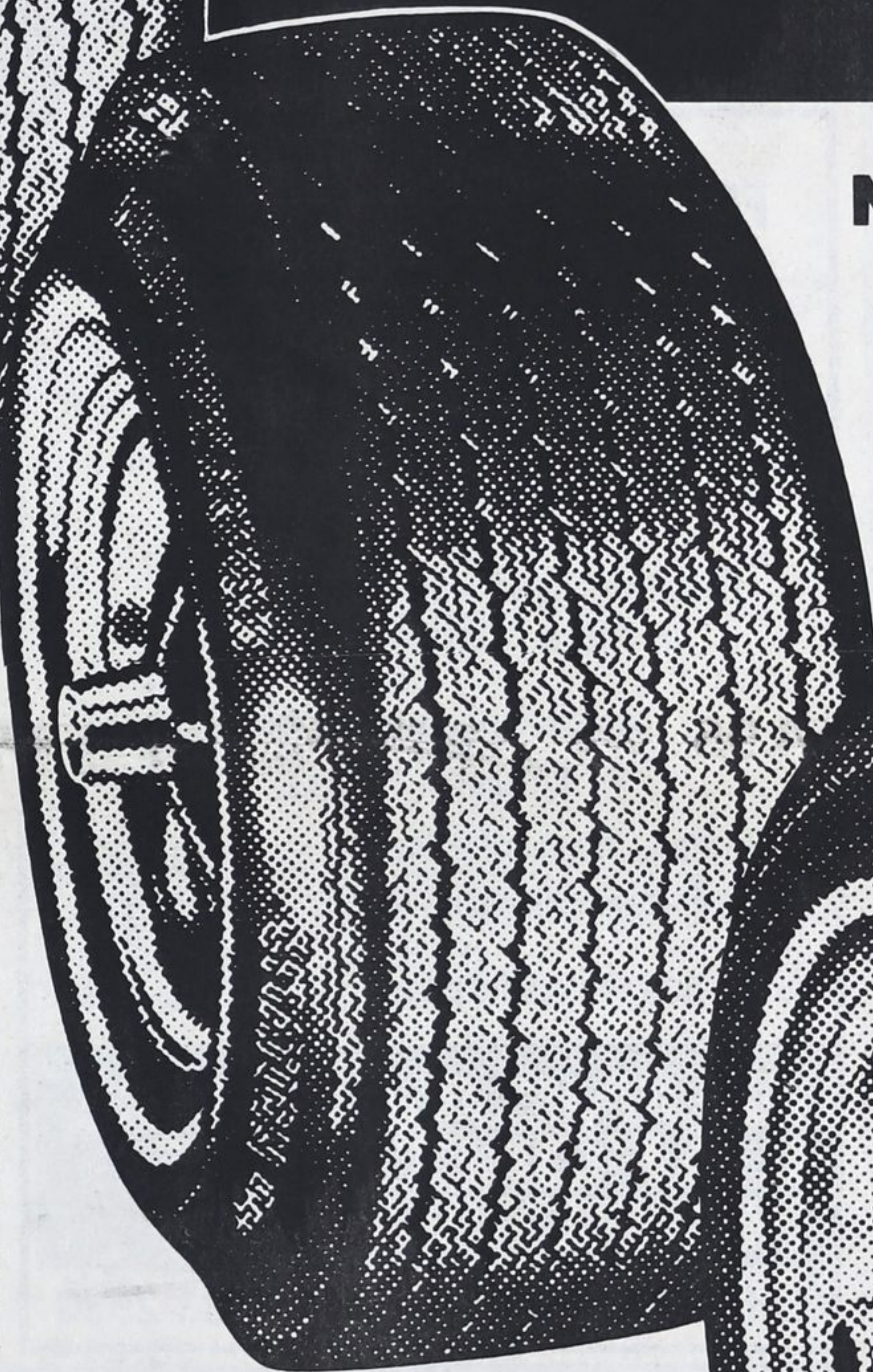
# ADCO TIRES

*A Complete Automotive Service*

## NORTH AMERICA'S MOST POPULAR REPLACEMENT TIRE

For many years...Kelly-Springfield tires have been the leading replacement tire on the North American continent. This popularity is the direct result of many years of excellent performance.

Kelly-Springfield tires are designed and built to their own rigid specifications...built specifically for a large replacement market...at a very reasonable cost to the consumer.



### ROADMARK

The new Roadmark tread is wider than conventional tires. Seven sharp-angled ribs improve starting and stopping action. Tread is deeper than any previous polyester tire carrying the Springfield name. On wet pavement, the six deep tread grooves drain water away from the riding ribs. Improves contact and traction. Four bead-to-bead plies of Polyester...today's most advanced tire cord...provide the body with extra strength and safety.

### CITATION

This new breed of tire is bias/belted. Bead-to-bead plies of polyester cord provide all the strength of nylon and the smooth riding comfort of rayon. Rigid stabilizing belts of Glass Fiber encircle the tire immediately under the tread. These belts restrict tread squeeze and road rub-off...add tread life, strength and traction. Your tread wears longer because the Celebrity G/P tread is lower and wider than the conventional Celebrity.

### AFFILIATED DEALERS IN THE MIDLAND AREA

<b>GARM'S SUNOCO SERVICE</b> 717 Yonge St., Midland, Ont.	<b>LAFONTAINE MOTORS</b> Lafontaine, Ont.
<b>LOCKHART MOTORS</b> Victoria Harbour, Ont.	<b>WYEVALE SUNOCO</b> Wyeval, Ont.
<b>PENETANG MOTOR SALES</b> P.O. Box 460, Penetanguishene, Ont.	<b>BOURGEOIS MOTORS</b> 472 Hugel Avenue Ave., Midland, Ont.

### PRESTIGE

You'll like the new Prestige Radial GT performance. Two strong, inextensible fiberglass belts, under the tread, protect against the road hazards and hold tread grooves open for effective action. A double layer of tough, tire, provide real riding comfort and flexibility. The sturdy 5-rib extra tough tread is designed for at least 30,000 miles of dependable driving.

655 VINDIN STREET, MIDLAND ONTARIO, PHONE 526-7831

# ADCO TIRES