

# Bayview presents dazzling musical production of Sleeping Beauty

A touring company from Bayview School is presenting the best piece of children's theatre to be seen in the Midland area for some time.

Sleeping Beauty, a dazzling production with original music, eye-catching costumes and spectacular lighting effects, is the Midland elementary school's Centennial project. They've been working on it for eight months, under the direction of Mrs. Val MacMenemey and the result is a polished performance of the children's classic. This week Sleeping

Beauty was presented for audiences at Bayview School, at Burkevale School in Penetanguishene and in Port McNicoll. Wednesday and Thursday nights, it will be presented at Bayview for parents and friends.

On Saturday morning at 10:30, Sleeping Beauty will be performed at the Odeon Theatre. Although not officially designated as a Midland Centennial attraction, the play will provide some delightful and hilarious entertainment for area youngsters.

Why Sleeping Beauty as a Centennial project? says Val MacMenemey, director. "Sleeping Beauty slept for a hundred years, but Midland certainly didn't." This particular production of the children's classic is one which was performed by students of Widdifield

High School in North Bay. Their performance won the all-Ontario drama festival award. Bayview borrowed some costumes from the North Bay troupe, and made the rest. Musical accompaniment for the goings-on is provided by teacher John Potts on guitar and

kazoo with Brian Loney on electric bass, and Stephen Ball on a Jew's harp. A full-throated chorus of school youngsters added to the musical delight. At various times during the production, the audience is asked to participate. Certainly

they reacted suitably to the evil machinations of the Purple Witch (Kathryn Joyner) and her herd of hissing cats. Christine Gardes played Briar Rose, and Nika Pruesse was Mother Pink the Fairy Godmother. Brad Newhouse, in a golden Stetson, played the

Prince of the West and Christine Jagos was the Queen. Todd Dumais played the King and the cast included Nancy Teskey, Drew MacMenemey, Dennis Birkel, Jenny McCallum, Beth Teskey, Denise Rhem, Nadine Carpenter and Heidi Quinsey.

Val MacMenemey and Technical Director John McCallum have inspired the Bayview troupe to excellent heights. Sleeping Beauty is a fine Centennial project and one of which the whole community can be proud.



Play

At Regent School, Monday, the students from Bayview school put on the play "Sleeping Beauty" that captured the audience's undivided attention. Kathryn Joyner the wicked "Purple Witch" swoops down upon the thrilled spectators.

Staff photo



Spell

In the play "Sleeping Beauty" the King (Todd Dumais) and Queen (Christine Jagos) discuss the fate of their beautiful daughter who has been put under a spell by the purple witch.

Staff photo

## ATTENTION FARMERS

### 40% Off

Get extra HORSEPOWER for harvesting your crops this year . . .

★ We have 65 to 130 H.P. tractors available for rent at 40% off regular rates during the period of June 15 to Sept. 15/78.

★ Also available at similar reductions during this same period is our complete line of heavy tillage equipment.

SEE US NOW AT:

**SOMERVILLE**  
FARM EQUIPMENT DEPOT



STAYNER  
428-3132



Town of Midland  
ONTARIO

## PROCLAMATION

On behalf of the Town of Midland, I hereby proclaim JUNE 17th to be MIDLAND MICHIGAN DAY to welcome our SISTER COMMUNITY.

As part of our CENTENNIAL CELEBRATIONS, HER HONOUR, THE LIEUTENANT GOVERNOR OF ONTARIO PAULINE MCGIBBON will be in attendance for a welcome at the Municipal Building at 4 o'clock in the afternoon.

At the Arena Grounds the Fort Henry Guard and The Ontario Legion Massed Pipe Bands will perform for Her Honour, Distinguished Guests and the Public at

7:30 p.m.

The Public is cordially invited  
Admission to Adults - \$1.00, Children - Free

Moreland A. Lynn  
Mayor, Town of Midland

# JUNE VALUE DAYS AT LeCLAIR FUELS

"Your Shell Agent"

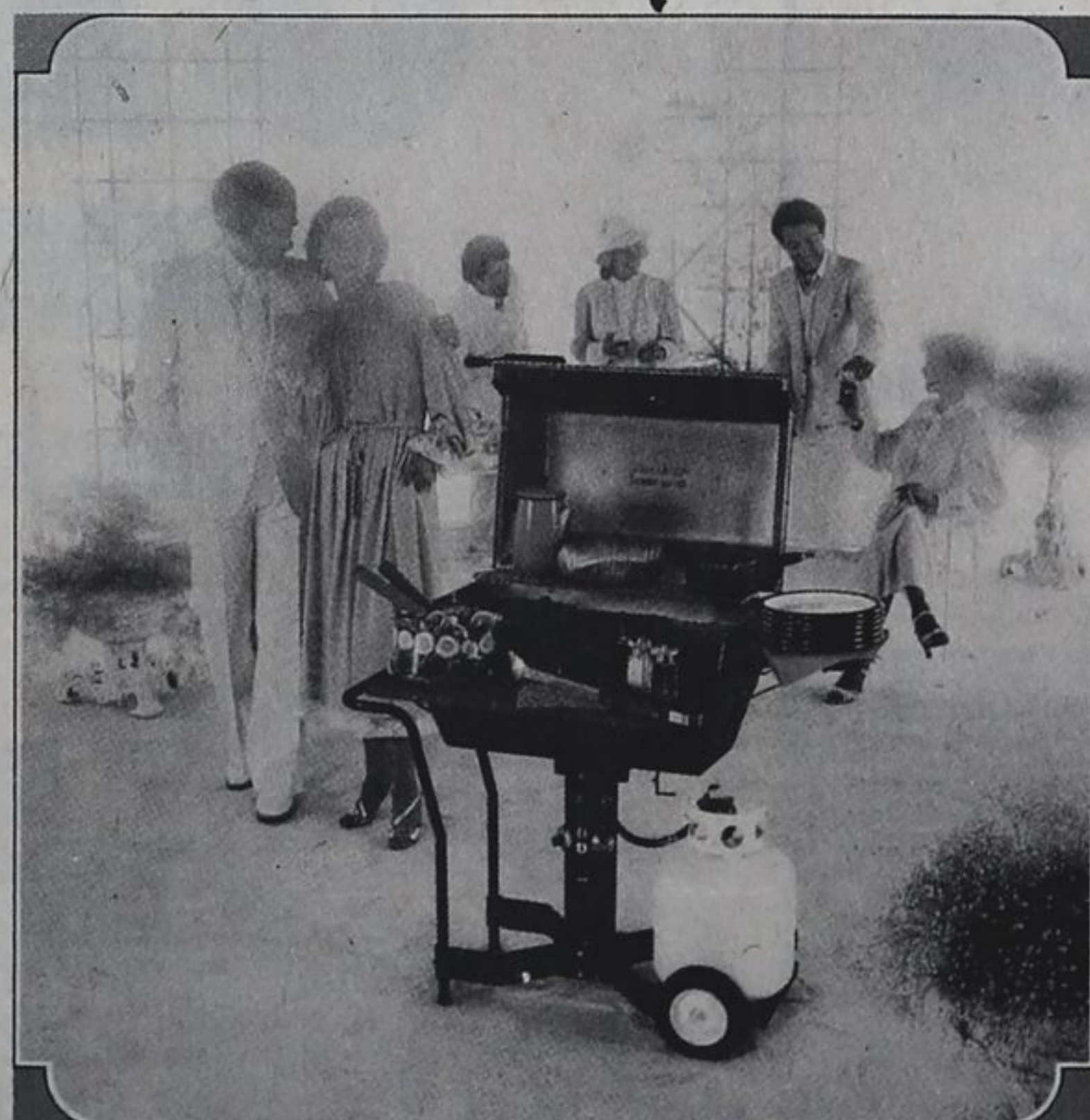
Now at our new location: 330 Elizabeth Street St., Midland

We invite you to drop in  
or call 526-9339 or 526-9330 and  
take advantage of our June Value Days Specials



## FREE

**BONUS DRAW**  
On This Deluxe Outdoor  
**BAR-B-QUE**



As a bonus for dropping in - fill an entry form  
and be eligible to

win this Deluxe Outdoor Propane Bar-B-Que

Retail value of over \$400<sup>00</sup>

Offer limited to those 18 years of age or over

Draw will take place on June 30, 1978

## SPECIAL OFFERS

**GIFT IDEA FOR  
FATHER'S DAY**  
or to give the kids  
for passing or  
for any gift occasion

**Pocket  
Calculator**



\$ **6** .88

This LLOYD'S Accumatic 503 Microelectric pocket calculator can help you so much in so many ways. We're sure you'll find this 4-mode memory, automatic, multi-function a versatile little tool.

OFFER LIMITED TO TWO PER PERSON  
FROM JUNE 5 TO JUNE 30, 1978 ONLY.

**HANDY 1 GALLON**  
4.55 litres  
**MEASURING CAN**

**88¢**



Here's a can with many,  
many possible uses - even  
to watering the flowers.

Notice the spill-proof nozzle  
and the handy calibration  
marks on the side.  
This is quality at a low price.

## church directory



THE CATHOLIC PARISH OF FLOS

SCHEDULE OF MASSES: Father Neil Varley  
Phelpston: Sun. 9 a.m. and  
Elmvale: Sat. 7:30 p.m. Sun. 10:00 a.m.

PRESBYTERIAN CHURCH IN CANADA

Minister: Rev. Sydney McDonald BA  
Phones: The Church 322-1411, The Manse, 322-2453  
Elmvale Church: Christian Education, 10 a.m.  
Christian Worship, 11 a.m.

UNITED CHURCH OF CANADA

St. John's - Elmvale Minister: Rev. B. Gazzard  
Worship: 11:00 a.m. (Nursery during Service)  
Phones: Church 322-1472, Manse 322-1522  
Wyevale United Church: 11:30 a.m.  
Waverley United Church: 10:00 a.m.  
Rev. Allan J. McLaughlin, Minister  
Hillsdale United Church  
Services 9:00 a.m. each week  
Minister: Reverend Arnie Chamberlain  
Sunday School 10:00 a.m. All are welcome.

The Salvation Army  
Midland Citadel Corps  
251 Second St., Midland  
Lt. and Mrs. Bruce Bailey  
(Commanding Officers)

Sunday Tuesday  
9:30 - Sunday School 7:30 - Bible Fellowship  
11:00 - Family Worship Wednesday  
7:00 - Circle Church 2:00 - Ladies' Home League  
(all ladies welcome)

Friday  
7:30 - CORNERSTONE  
(Teenage Bible Study and Coffee House)  
Telephone: 526-2751

THE ANGLICAN PARISH OF ELMVALE  
Rector: The Rev. J. Allan Kirk  
Rectory - 322-2115 Church - 322-2712

Wycliffe Church, Elmvale  
Sunday 8:00 a.m. Holy Eucharist weekly  
11:15 a.m. Holy Eucharist, 1st and 3rd  
Morning Prayer, 2nd, 4th and 5th  
Wednesday 9:30 a.m. Holy Eucharist  
St. John's Waverley  
10:15 a.m. Holy Eucharist, 2nd and 4th  
Morning Prayer, 1st, 3rd and 5th  
Good Shepherd, Wyebridge  
9:15 a.m. Holy Eucharist, 2nd and 4th  
Morning Prayer, 1st, 3rd and 5th  
Sunday School at main service in the three  
churches.

Calvary Baptist Church  
598 King St., Midland  
Pastor: Rev. Rob Campbell, B.A., M.Div.  
526-9681  
10:00 a.m. Service of Worship  
and Instruction  
11:15 a.m.  
Church School and  
Adult Interaction Groups  
All Welcome