

Hospital Board names 1978 committees

At Monday night's Huronia District Hospital Board meeting, it was announced that the following doctors are now on staff at HDH:

The Active Staff is composed of Doctors R.H. Besley, P. Cameron, J.C. Charron, G. Gauthier, W.N. Grieve, H. Jilesen, W.W. Kettle, H. Kiefer, H. King, R. Lal, R. Lauzon, J. Martin, L. McCutcheon, M.L. McTavish, M.J. Moore, D. Parsons, J. Small, C.A. Talbot, D.L. Woods, and J. Young.

Dr. B. Golisky is on the associate staff, and Dr. A. Minnes is on the courtesy staff.

Active consultants are doctors P.K. Anand, P.H. Brasher, and G. Gunn, surgeons; Dr. E. Rusiewicz, radiologist; Dr. L. Melnyk, ophthalmologist; Dr. L.J.M. Tremblay, Pathologist and Dr. J. Dolezel, internist.

Courtesy consultants are: Dr. G. Doherty, Radiologist; Dr. R.K. Graham, psychiatrist; Dr. D. Henderson, psychiatrist; Dr. D. Paterson, surgeon; Dr. A. Scarth, radiologist; Dr. J. Wensley, Internist; and Dr. R. Kiff, ophthalmologist.

At the Monday night meeting executive committees for 1978 were announced. Dr. H.F. King is chief of staff, with President W. Kittle. Dr. H.C. Jilesen is vice-president. Dr. P. Cameron will serve as treasurer.

Dr. D. Parsons will head up the anaesthesia department and Dr. J. Dolezel is head of the Medicine department. Other department heads are Dr. Jilesen, general practice; Dr. Gunn, surgery; Dr. Tremblay, pathology; Dr. Rusiewicz, radiology and Dr. Kettle, obstetrics.

Dr. Tremblay is chairman of the bylaws committee, and will work with Dr. Parsons and Dr. Besley.

Doctors Cameron, Kettle and Besley (with alternate W.N. Grieve) and M. McTavish are on the therapeutic abortion committee.

Dr. J. Dolezel is the chairman of the library committee and the pharmacy committee consists of doctors Dolezel and Grieve.

Dr. Tremblay is chairman of the infection control committee and will work with Dr. W. Kettle.

Doctors H. Jilesen, J. Martin and M. McTavish are in charge of admissions and discharges. The record and audit committee consists of Dr. Tremblay, Dr. Parsons, and Dr. Besley.

Dr. King is chairman of the hospital joint conference, with W. Kettle, H.C. Jilesen, D. Parsons, and J. Dolezel.

Accident rate continues downward trend

As part of what appears to be a very healthy trend in Midland recently, only two major traffic mishaps were investigated by Midland police over the weekend.

The first occurred on Friday evening, at approximately 9:10 p.m. Police say that cars driven by Peter Moreau of Victoria Harbour and Robert Rutherford of Midland collided at the intersection of Yonge and Eighth streets.

As a result of the accident, Moreau has been charged with failing to yield.

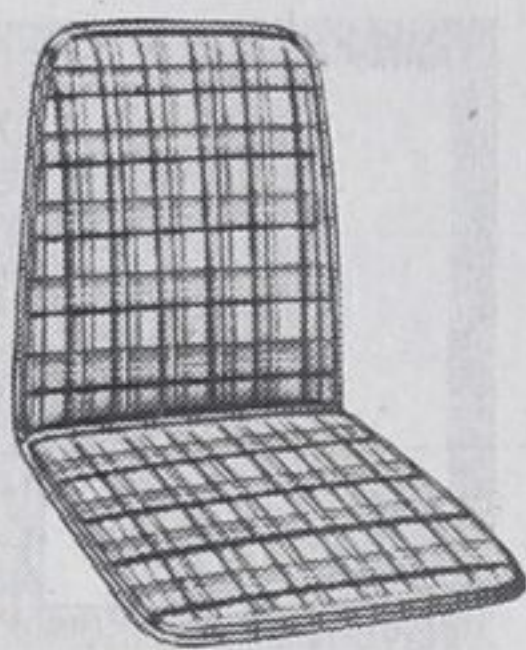
His car received \$400 damage, while the Rutherford vehicle sustained \$300 damage. There were no injuries.



-34°C
Windshield Washer Anti-Freeze

129
Gallon

Quickly cleans windshield to give you a clear view for safer driving. Ready mixed—needs no diluting. Good to -34°C (-30°F). In handy plastic container. 38-4153

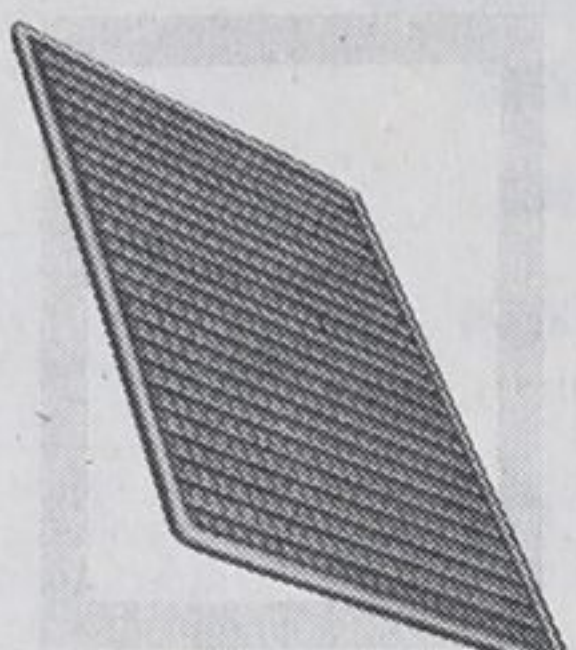


The Thermoseat Auto Cushion

Durable plaid fabric

489

Insulates you from cold using your own body heat. 33-1683

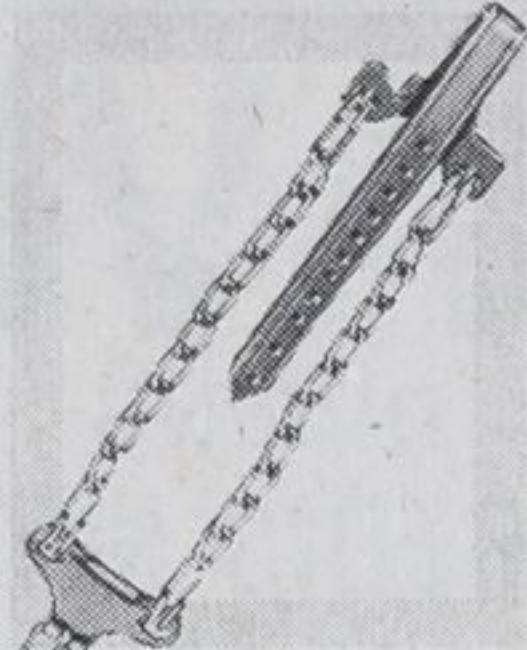


Durable Rubber Slush Mat

About 20 1/2 x 13 3/4"

269
Each

Waffle-molded grooves trap slush. Asst. colors. 31-2058



Strap-On Tire Chains

5.00/5.20/5.60 tires

479

Extra grip. 30-1611X. Chains to fit series E/F/G/H tires, ea. 5.29

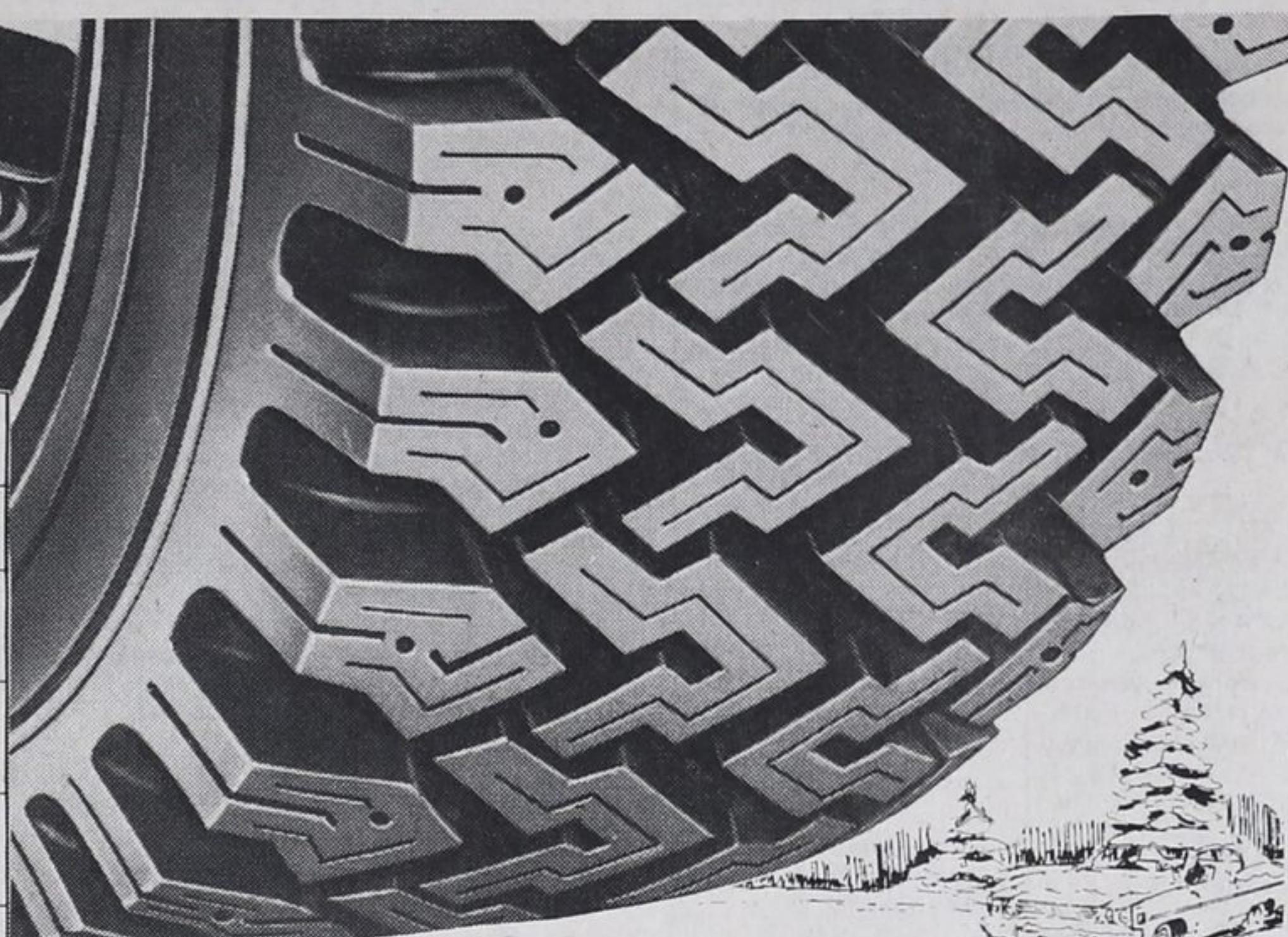
Weather beaters all...



Giant Hiway-Byway 4-Ply Nylon Whitewall

Sizes	One tire price	2 or more each after discount*
520/10	18.45**	15.63**
550/12	19.45**	16.58**
600/12	21.95	18.95
600/12	24.95	21.80
600/13	25.30†	22.13†
A78/13	27.80	24.51
B78/13	29.80†	26.41†
C78/13	30.30†	26.88†
B78/14	27.90†	24.60†
C78/14	26.80**	23.56**
D78/14	29.90	26.50
E78/14	30.40	26.98
F78/14	31.95	28.45
G78/14	33.80	30.21
H78/14	35.30	31.63
560/15	27.25	23.99
C78/15	30.40†	26.98†
F78/15	32.40	28.88
G78/15	33.95	30.35
H78/15	35.95	32.25
J78/15	36.65	32.92

* 2-Ply Nylon **Blackwall price † Blackwall at \$1.90 less per tire



Giant Hiway-Byway 4-Ply Nylon

A hefty traction-getter for winter snow and ice

E78/14 Whitewall
3040 Each
2 or more tires after discount* **2698** Each

This is our famous Hiway-Byway that has won its spurs as the tire that makes fun of Winter driving. It's big, burly, deep-treaded and built with 4 plies of tough Du Pont Nylon. A winner!

Rugged Glass-Belted Hiway-Byways

For more 'Go' traction, a choice of two muscular Hiway-Byways—belted nylon for extra safety, or belted polyester extra smooth!

Hiway-Byway 2+2 Glass-Belted Nylon

You get a triple advantage here—2 Du Pont Nylon cord plies for test-proven safety, plus 2 glass belts for extra strength—topped by that special deep-biting Hiway-Byway tread for extra traction.

Whitewall sizes	Hiway-Byway 2+2 Glass-Belted Nylon		Tornado 70 Series with Glass Belt	
	One tire price	2 or more each after discount*	One tire price	2 or more each after discount*
A78/13	29.30	25.93	33.80	30.21
B78/14	30.40	26.98	—	—
D78/14	32.30	28.78	37.90	34.10
E78/14	32.90	29.35	39.85	35.96
F78/14	34.45	30.83	40.90	36.95
G78/14	36.30	32.58	42.80	38.76
H78/14	38.80	34.96	45.80	41.61
C78/15	32.90	29.35	—	—
F78/15	34.40	30.78	—	—
G78/15	37.45	33.68	43.95	39.85
H78/15	40.45	36.53	46.45	42.23
J78/15	41.65	37.67	—	—
L78/15	43.80	39.71	—	—

* 70 Series: Tire sizes shown as 78, eg. read ER78/14 as ER70/14



Hiway-Byway 2+2 E78/14 Whitewall
3290 Each
2 or more after discount* **2935** Ea.

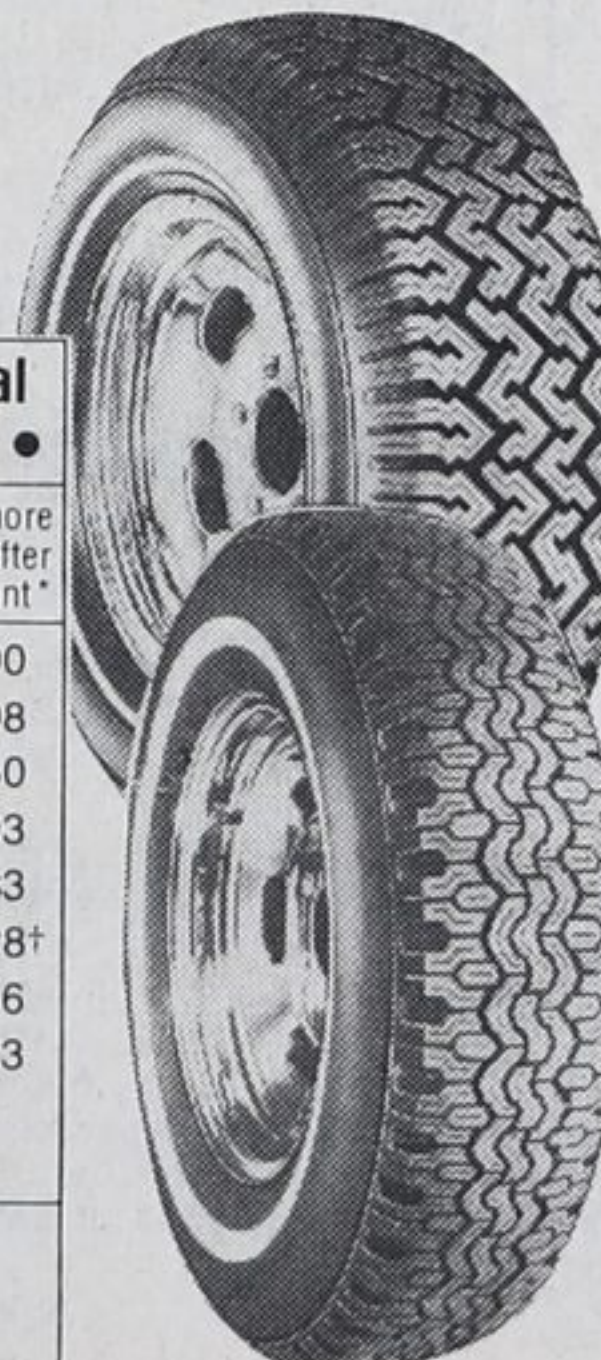
Tornado 70 Series E70/14 White Letters
3985 Each
2 or more after discount* **3596** Ea.

Hiway-Byway Tornado 70 Glass-Belted Wide One

An exceptionally quiet, wide winter tire: 2 glass belts provide rigid tread-face for traction; 2 polyester plies for no-thump starts. White Tornado letters on 1 side, slim white stripe on other.

Whitewall sizes	Kevlar-Belted Radial Hiway-Byway with BPT		Glass-Belt Radial Hiway-Byway 70	
	One tire price	2 or more each after discount*	One tire price	2 or more each after discount*
AR78/13	—	—	44.95	38.90
DR78/14	59.30	52.53	50.30	43.98
ER78/14	60.80	53.96	51.90	45.50
FR78/14	63.45	56.48	54.45	47.93
GR78/14	65.95	58.85	56.45	49.83
HR70/14	—	—	64.30†	57.28†
GR78/15	66.30	59.18	56.80	50.16
HR78/15	70.45	63.13	60.45	53.63
JR78/15	72.90	65.45	—	—
LR78/15	74.90	67.35	—	—

* 70 Series: Tire Sizes shown as 78, eg. read ER78/14 as ER70/14 † HR70/14—built with Rayon belts instead of Glass (We have Winter tires for most metric-equipped new cars)



Hiway-Byway 70 Series Radial Glass-Belted Polyester (most sizes)

They match your extra-wide 70 series summer radials or provide a wider foot-print for plus traction if you have 78 series.

ER70/14 Whitewall 2 or more after discount*
5190 Each **4550** Each

Kevlar-Belted Hiway-Byway with BPT

Belts of Kevlar—pound for pound 5 times stronger than steel—add durability plus Big Paw Traction for standout grip on ice.

ER78/14 Whitewall 2 or more after discount*
6080 Each **5396** Each



No extra charge for passenger tire installation on most standard rims when you buy a Dill or Schrader valve at our regular price of \$1.00. We must install our new tire and valve together.

Ask your dealer about the advantages of balancing your wheels and tires.

5-year road hazard insurance. Coverage applies to above tires. It ensures your tires against damage caused by road conditions which render them unsafe.

Due to heavy seasonal demand we may be temporarily out of stock on your size—but we will gladly take your order.

*** 5% Discount for cash payment on tires in lieu of Cash Bonus Coupons**



EXTRA SAVINGS! 4% CASH & CARRY BONUS COUPONS

David J. Finch Ltd., 478 Bay St. 526-9321

OPEN THURSDAY AND FRIDAY NIGHTS UNTIL 9:00 P.M.