

The Mind of NORMAN BETHUNE RODERICK STEWART

Folk hero

Drama comes to Bayview

Bayview School in Midland will play host to a visiting group of secondary school students from North Bay this week, and will be entertained by the dramatic and musical skills of their visitors.

About 30 high school students from Widdifield Secondary School will arrive on Wednesday evening and prepare for a dramatic workshop to be presented for Bayview students on Thursday morning and afternoon.

On Thursday night, "The Company" as they are known, will offer two dramatic presentations

for area students at a nominal admission charge. This first work, entitled "You're My Friend," is a lighthearted piece for children of all ages, based on the story of Raggedy Ann and Andy. Part two of the presentation will be "Just us," a dramatic anthology of song, poetry, music and remembrances.

Performances for the general public will be held on Friday evening, again with nominal admission charge.

Both Thursday and Friday presentations get under way at 7:00 p.m.

Society plans essay contest

The Simcoe County Historical Association has announced that papers submitted to its 1977 essay contest are being read and evaluated.

While the 1977 contest ended June 1, the Association points out that planning for the 1978 contest has commenced, and relevant information will soon be available in area secondary schools.

The contest, open to all secondary school students in Simcoe County, encourages participants to undertake original research relating to some aspect of County history.

Norman Bethune- to Canadians an enigma, but to the people of China an amazing hero

By Shirley Whittington
The Chinese dedication of Norman Bethune always amazes Canadians, who are just beginning to get to know the passionate and dedicated doctor who saved so many lives in Spain and in China.

Roderick Stewart is one reason Canadians know now almost as much about Bethune as the average Chinese school child.

Stewart's book, *Bethune*, is an excellent account of the man's life and works. Now Stewart has brought out a collection of pictures, letters and other Bethune writings. Called *The Mind of Norman Bethune*, it will be a valuable resource for any student of the man.

There are over 100 photographs in the book, many of them reproduced for the first time. One shows the Bethune birthplace in Gravenhurst and there are many photographs of his work in cramped and crowded conditions on the battlefields of Spain and China.

Perhaps the most remarkable effect of so many photographs is the gradual and continuing revelation of the man. Bethune appears in early photographs as handsome, prosperous and playful. In Spain, he looks more serious, but still a bit raffish. It is not until the later Chinese pictures that we find the Bethune countenance almost approaching that of the

ascetic—lean, intense and dedicated.

As well as doctor and inventor of medical tools, Bethune was an artist and a writer. Several of his pictures are reproduced in *The Mind of Bethune*, and also reprinted are a couple of stories, radio broadcasts and articles.

His letters are revealing—not just of his literary and artistic skills, but they show an orderly and probing mind at work. Many of his letters are reports, detailing the number of training courses he's given, the number of operating rooms and dressing rooms he has set up, and his expenses. (Personal expenses for

the month of June were \$18.62).

Remembered home
He had planned to come back to Canada in 1940 to raise more money for his work. He was tired, run-down and although he seldom admitted it, homesick. "I dream of coffee, of rare roast beef, of apple pie, and ice cream... Books—are books still being written? Is music still being played? Do you dance, drink beer look at pictures? What do clean white sheets in a soft bed feel like?"

A month before he was to leave, he cut his finger during a hurried operation. (Rubber gloves were expensive,

and Bethune was continually running out of them). Infection set in, and he became very weak and ill.

Yet he continued to write. The day before he died, he said: "Useless for work. Vomiting on stretcher all day. High fever, over 40 C. I think I have either septicaemia from the gangrenous fever or typhus fever."

He died the next day. Five weeks after his death, Mao Tse-tung wrote an essay in his memory. And today, visiting Chinese dignitaries make the pilgrimage to the Bethune birthplace in Gravenhurst. One such pilgrim was

observed last week, quietly walking on the lawn of the Bethune house, and picking up the Maple leaves that had fallen on the grass. He put them into the pocket of his Mao jacket, with reverence and care.

If it is hard to understand such devotion to a man who only spent less than two years in China, Roderick Stewart's The

Mind of Bethune clarifies the legend.

Writer Stewart will be in Midland on November 2 at the Midland Public library. He is a history teacher who began to research Bethune's life in 1969.

The Mind of Norman Bethune, by Roderick Stewart. Fitzhenry and Whiteside pub. \$15.95. 150 pp.

Learn about Retirement in Florida

Florida retirement starts as low as \$22,990.00!

Maple Leaf Estates is on the unspoiled, uncrowded sunny Gulf side of Florida, along the coast between Sarasota and Fort Myers, where royal palms abound and the climate is sub-tropical. Here we've created an elegant spacious adult mobile home community that is destined to win honours and awards for beauty and elegance.

Maple Leaf Estates was conceived by Canadians with Canadians in mind. Spacious 24 foot wide homes—all with two bedrooms, all with two bathrooms... fully air conditioned. Beautifully landscaped on large private lots, these homes are built with the accent on quality.

Shopping, hospitals, restaurants, an adult-only university are all close by—but out of sight and sound. And you can make the most of your money. A reasonable rental covers lawn care, cable TV, home security, refuse removal and complete access to your own clubhouse and all recreational facilities.

Come and see our film on Maple Leaf Estates and pick up all the information you'll need about retiring to Florida. If you're interested, we will fly you down for a long week-end first hand look for a nominal charge.

MAPLE LEAF ESTATES

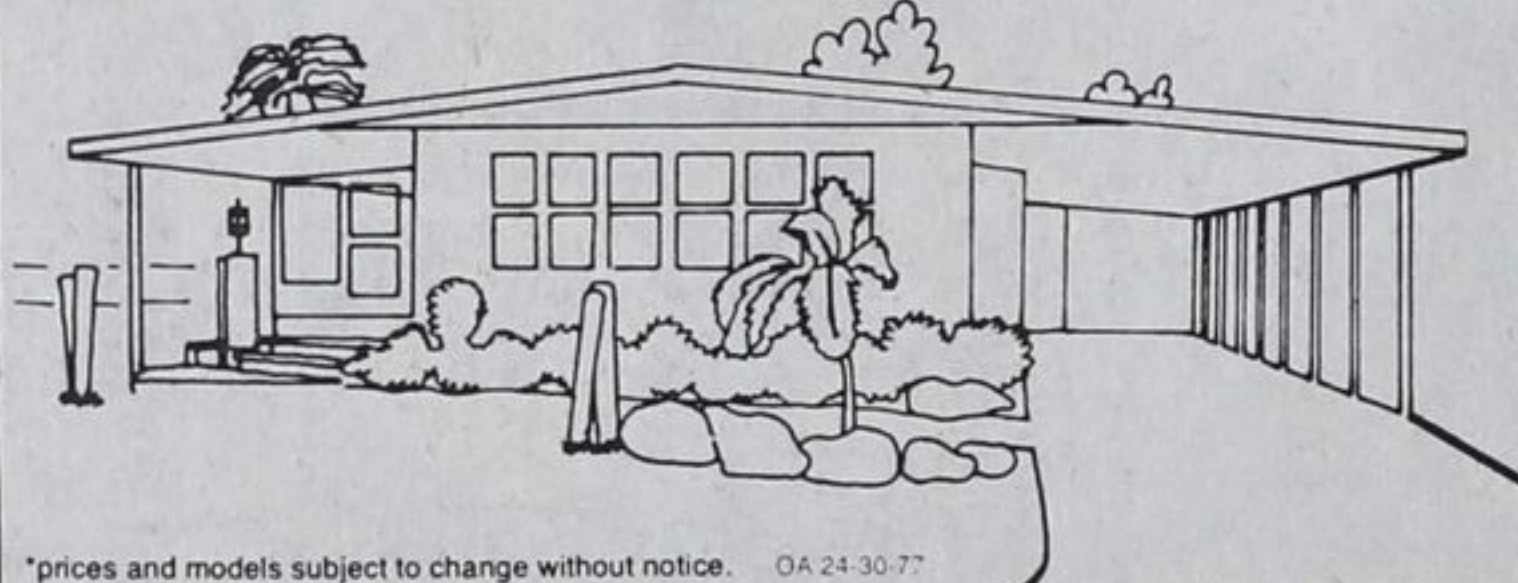
Port Charlotte, Florida

A wholly controlled subsidiary of Baycrest Consolidated Holding Limited of Toronto... a leading developer and builder of residential communities.

Represented in Ontario by

INLAND REAL ESTATE AND INSURANCE LTD.

Real Estate Broker
1616 Matheson Blvd.
Mississauga, Ontario L4W 1R9
416-625-8133



*prices and models subject to change without notice. OA 24-30-77


INFORMATIVE SEMINAR—2 SHOWINGS

Tuesday, October 25, 1977
2:30 P.M. and 7:30 P.M.
Holiday Inn, ORILLIA

Refreshments and colour film. Adults only.

Want a **REPRINT** of a photo in our paper? Payable in advance
Come into one of our offices and order yours today

Robert Gani



Mr. James Calladine announces the appointment of Mr. Robert (Bob) Gani to the position of President of Calladine and Baldry.

Formerly, Vice President Sales, Mr. Gani assumes overall responsibility for the retail travel operations, trading as Calladine and Baldry, the Bay Travel, Lucas and King and O.K. Johnson, jointly, Ontario's largest travel company. Mr. Calladine is Chairman of the Board.

WANTED
Mothers with children 2-4 years old for an eight session program
"Enjoying Your Pre-Schoolers"
sponsored by the Inter-Agency Preschool Education Committee
Commences Mon. Oct. 24 at Midland YMCA
Limit 20 mothers, Fee \$2.00
For information and registration Phone 526-9333

church directory

THE CATHOLIC PARISH OF FLOS
SCHEDULE OF MASSES: Father Neil Varley
Pheipston: Sun. 9 a.m. and 11 a.m.
Allenwood: Sat. 6:30 p.m. Sun. 9, 10, 11 a.m.
Elmvalle: Sat. 7:30 p.m. Sun. 10:00 a.m.

PRESBYTERIAN CHURCH IN CANADA
Minister: Rev. Sydney McDonald BA
Phonics: The Church 322-1411, The Manse, 322-2453
Elmvalle Church: Christian Education, 10 a.m.
Christian Worship, 11 a.m.

UNITED CHURCH OF CANADA
St. John's—Elmvalle Minister: Rev. B. Gazzard
Worship: 11:00 a.m. (Nursery during Service)
Phonics: Church 322-1472, Manse 322-1522
Wyevale United Church: 11:30 a.m.
Waverley United Church: 10:00 a.m.
Rev. Allan J. McLaughlin, Minister
Hillsdale United Church
Services 9:00 a.m. each week
Minister: Reverend Arnie Chamberlain
Sunday School 10:00 a.m. All are welcome.

SALVATION ARMY
The Salvation Army are meeting in the Youth Hall at the rear of 251 2nd St., Midland.
9:30 a.m.—Sunday School for all ages
11:00 a.m.—Sunday Morning Meeting
7 p.m.—Sunday Evening
Tues. 7 p.m.—Prayer and Bible Fellowship
Wed. 2:00 p.m.—Ladies Meetings.

THE ANGLICAN PARISH OF ELMVALE
Rector: The Rev. J. Allan Kirk
Rectorry—322-2115 Church—322-2712

Wycliffe Church, Elmvalle
Sunday 8:00 a.m. Holy Eucharist weekly
11:15 a.m. Holy Eucharist, 1st and 3rd
Morning Prayer, 2nd, 4th and 5th
Wednesday 9:30 a.m. Holy Eucharist
St. John's Waverley
10:15 a.m. Holy Eucharist, 2nd and 4th
Morning Prayer, 1st, 3rd and 5th
Good Shepherd, Wyebridge
9:15 a.m. Holy Eucharist, 2nd and 4th
Morning Prayer, 1st, 3rd and 5th
Sunday School at main service in the three churches.

DON'T MISS THE BIG Early Bird OPEN HOUSE

October 19th, 20th, 21st & 22nd
REFRESHMENTS 8 A.M. TO 6 P.M.

LOW LOW PRICES



Check out all the time-saving Massey features...
TRACTORS/ IMPLEMENTS/HAY TOOLS/ LOADERS

SPECIAL ALLOWANCES

Robert Wood Sales & Service Ltd. **Hitch up to Massey.**

PARTS — SERVICE — WELDING
Phone 534-7371
P.O. Box 39
Port McNicoll, Ontario
AUTHORIZED MASSEY FERGUSON DEALER
INDUSTRIAL & FARM EQUIPMENT

THOMPSON'S
Furniture, Appliances and Floor Coverings

Reduces prices during the Burlington Look



ANNUAL FACTORY AUTHORIZED SALE

Sale Ends October 22
Save up to \$5.00 per square yard

Now Burlington Carpets stay newer looking longer with ZEPPEL®
Soil Resistant Treatment resists soil... easier cleaning

THOMPSON'S
Furniture, Appliances and Floor Coverings

264 King St., Midland, Open 6 days a week Thurs. and Fri. 'til 9 P.M. Telephone: 526-5443