

Movie review

Bad News Bears break training at Odeon and Pen

by Terry Dupuis
The Bad News Bears was one of the most successful comedies of 1976. Sequels to successful movies being the rule in Hollywood, it was only a matter of time before the Bad News Bears would appear in a follow-up picture. That sequel is now opening at both the Odeon Theatre in Midland and the Pen Theatre in Penetang.

Last year the Bad News Bears baseball team rose from obscurity to finish in second place in the North

Valley League. This season the Bears hit the big time, when they're chosen to travel to the Houston Astrodome to play a four-inning playoff game against the Texas champs, the Houston Toros.

The Bears are happily reunited and eager for the big game in Houston. There is Ogilvie, who is more statistician than baseball player, Tanner Boyle, the feisty shortstop who spends more time fighting than playing, Engelberg, the overweight catcher who has a

weakness for food; Rudy Stein, who dreams of beating Hank Aaron's homerun record, but is lucky to hit a single; the Agilar Boys, Miguel and Jose; and Kelly Leak, the infamous Bears' superstar.

Guiding the Bears as coach in the original movie was Walter Matthau. In the new movie, their new coach is Kelly Leak's estranged father, portrayed by William Devane. Devane has previously portrayed John F. Kennedy in the television dramatization

of the Cuban Missile Crisis, and he had important roles last year in

Family Plot and Marathon Man. "Breaking Training" is

Devane's first starring role. Like his predecessor

Matthau, Devane finds that coaching the Bad News Bears is certainly a

challenge, as the team once again encounters new problems.

Playing at the Pen Theatre with Bad News Bears in Breaking

Training is the science-fiction fantasy Barbarella starring Jane Fonda.

Museum closes Monday

On Thanksgiving Monday morning Vern Farrow, curator at Huronia Museum will wind the old "steep clock" for the last time this year. The clock, which was put in running order this summer, has been keeping perfect time ever since. That is, it has been keeping time provided he didn't forget to wind it.

When the Museum closes its doors Thanksgiving Monday night, it will remain closed until the Victoria Day weekend next May. Attendance at the Museum has been up approximately 20 per cent this year, as compared to last, the curator said. However, the past few weeks have not been good. It is believed this was due to the extremely rainy weather which has prevailed for about a month.

Mr. Farrow says he is already commencing promotion work for next

season and expects next year to show another increase in attendance. Several new exhibits are expected to be among the features next year. These will be added to by the introduction of at least two new audio-visual presentations.

For the first time this year the Museum has entertained busloads of visitors from overseas, and the success of these has resulted in efforts to obtain more such tours. On three separate occasions busloads of touring Netherlanders have visited Huronia Museum.

Huron Museum will be making special efforts during 1978 to present subjects which will be compatible with the town's Centennial theme. It is expected that many people who will be visiting Midland because of the Centennial, will also visit the Museum.

Among the recent

acquisitions at the Museum are two old battery operated radios from the late 20's and early 30's. There are also some men's and children's high button shoes.

Located in Little Lake Park, the Museum will be open 9:30 to 5:30 daily until Thanksgiving. Sunday opening time is 11 a.m.

SAVE
as you
BUY
Home Gifts

You'll be amazed at the scope and variety of gifts for the home we've assembled for your selection. Sensibly priced, too, in the tradition we have proudly upheld for many years. Drop in and browse. We'll welcome the opportunity to serve you.

FOLEY'S
Furniture
& Appliances
Hwy. 26
COLLINGWOOD

Postal deadlines are approaching

Canada Post has released the deadlines for overseas mailing of Christmas cards and packages for 1977.

The deadline for mailing letters and sealed and unsealed Christmas cards to Great Britain

and Ireland is December 13; to the rest of Europe the deadline is December 8.

Parcel Post deadlines for Great Britain and Ireland is December 8 and for the rest of Europe, December 2.

VERY SPECIAL SPECIAL

On Sale
Thurs. - Sat.
October 6-8



Special Purchase
Limited Quantities
No Rainchecks

"Candle" Stereo Components AM/FM/MPX Radic - Full - Size Changer 8-Track Player

Comp. Value 139.95

- AM/FM/MPX stereo receiver with AFC for drift-free FM
- Slide controls for bass, treble, balance and volume
- Built-in 8-track player with program lights
- 33, 45, 78 automatic turntable with dust cover
- Built-in speakers

99⁹⁹ SET

One Pair Of Optional External Speakers. Ea. 10 1/4" x 18" x 5 1/2" d. **24⁹⁵** PAIR

Zellers

Where It's "Satisfaction Guaranteed!"
Highway 27, MIDLAND
OPEN: 10 a.m. to 10 p.m.
Monday thru Saturday

THE CURTAIN IS UP ON THE 78

INTRODUCING

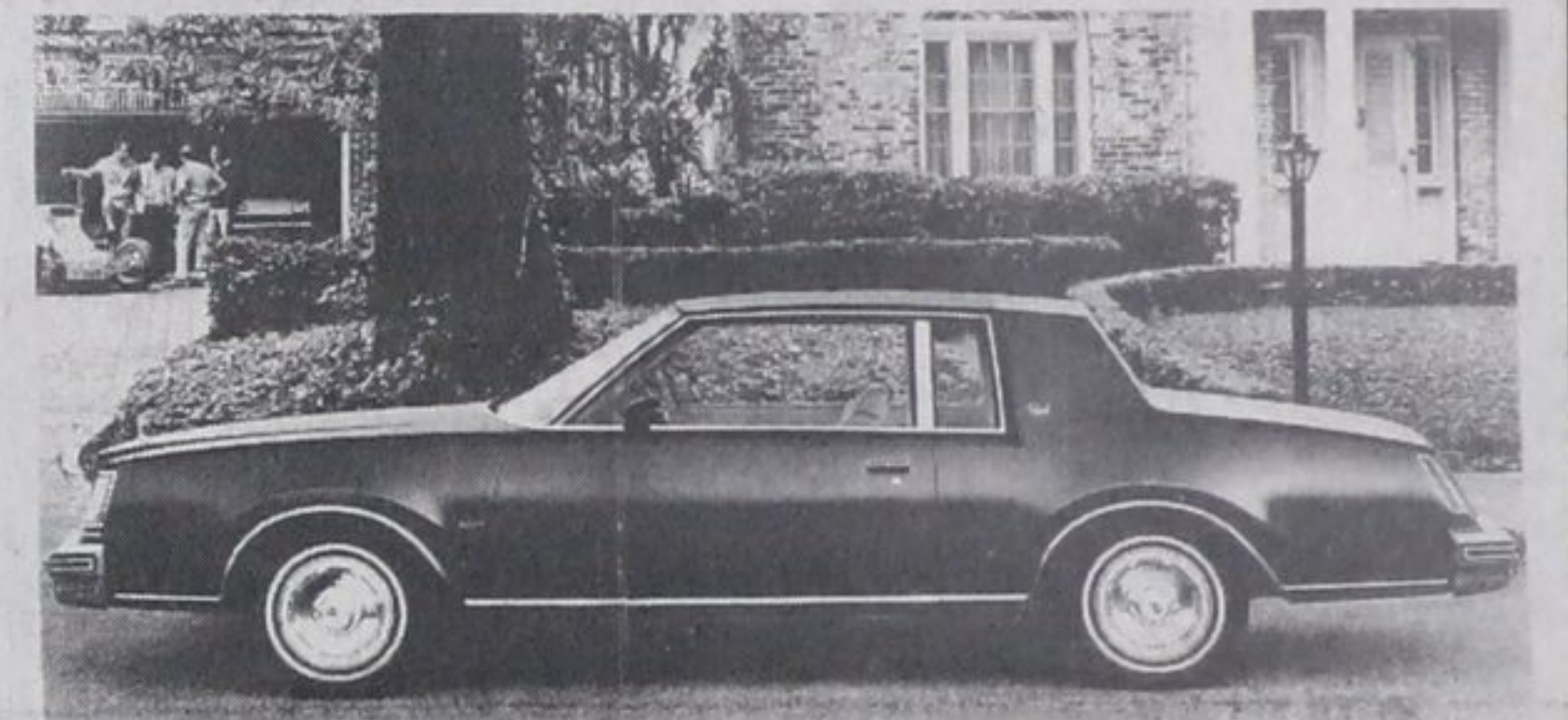
REGAL

This is the 1978 Regal, a beautiful example of how we've employed science to meet the needs of this day and age. And, at the same time, maintained the magic of Buick's famed luxury ride.

Regal's exterior dimensions are trimmer this year, but usable interior room has improved in several important areas.

We accomplished this by maximizing available space. We squared-off the lines, expanded areas that needed expanding, and eliminated unused space.

In the process, we also made Regal exceptionally distinctive in appearance. For 1978, Regal features a formal roofline and its own vertical grille design, which is similar to that of the Riviera. And this year, there are three Regals, all of which are Coupes: the base Regal, the Regal Limited and the Regal Sport Coupe.



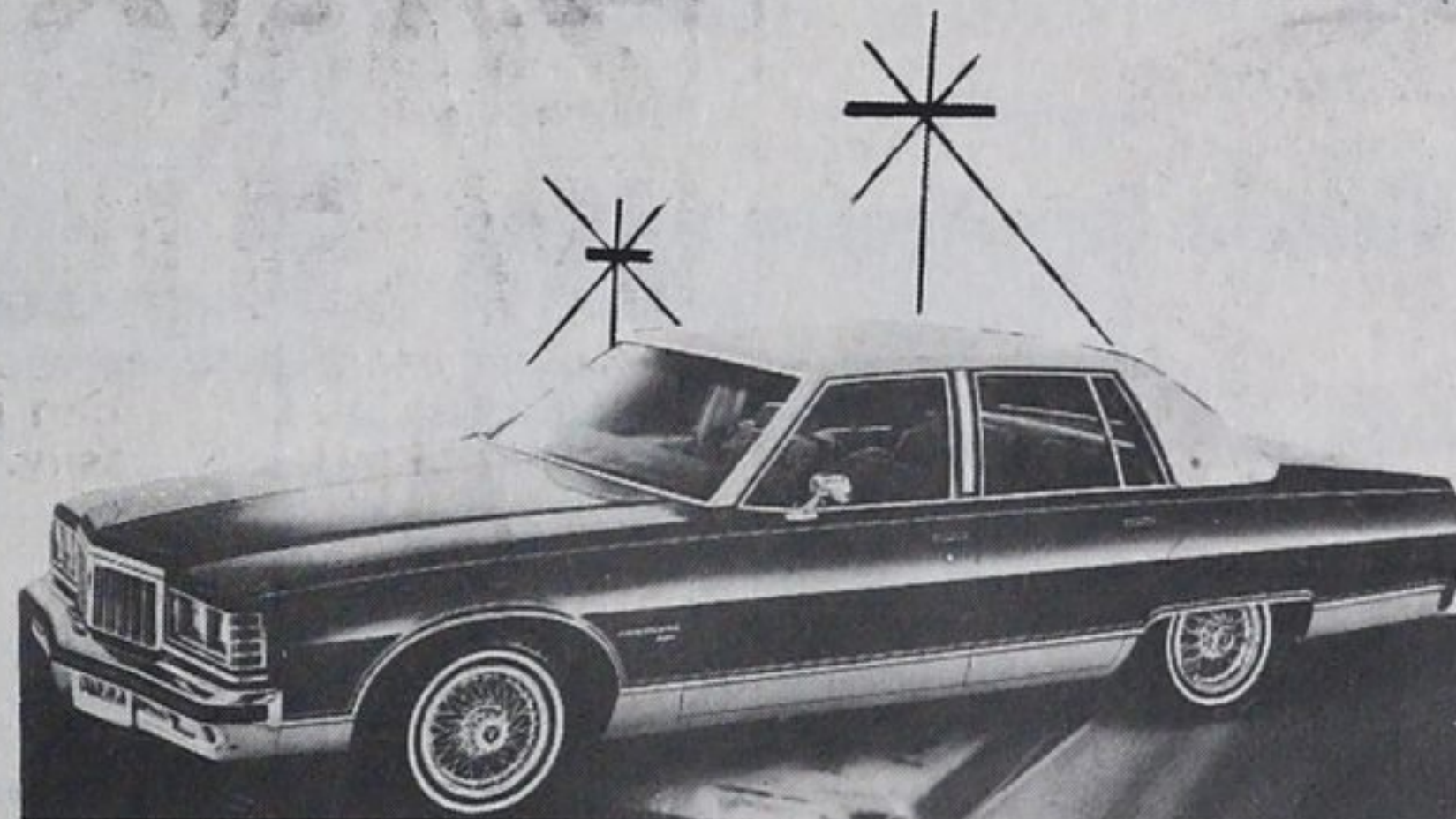
PARISIENNE

Inside, our new Parisienne lets you choose between its beautiful standard cloth or vinyl notchback full-width seats. Or its available 60/40 full-width seats in cloth or vinyl. Or Parisienne's exclusive striped velour "Valencia" interior.

Elegant styling has always been a trademark of Pontiac's Parisienne, and this year is no exception. Its trim, handsome lines set off the bold grille and wraparound taillamps. Rear wheel opening covers, wide rocker panel mouldings, wheel opening and window moldings and the distinctive grille make Parisienne's styling stand out from the pack.

With all these luxurious qualities, it's no wonder we call it our most luxurious Parisienne yet.

And why actually driving your new Parisienne home would be a lot more satisfying than just imagining it.



GMC PICKUPS

GMC Pickups keep on adding to the number of satisfied owners who use them for personal transportation and then take off for campsites, job sites and cross-country just to see the sights. That's because GMC Pickups do more than a good job.

Inside each cab you can find interiors and available trim the envy of most any car. They're comfortable and meant to be for hours behind an available tilt steering wheel. This year GMC has added more people-pleasing features.



BUICK LINE

Skyhawk
Century
Regal
Skyhawk
LeSabre
Electra
Riviera

PONTIAC LINE

Acadian
Sunbird
Phoenix
Firebird
LeMans
Grand Prix
Laurentian
Parisienne

GMC PICKUPS

Cab-Chassis
Jimmy
Suburban
Rally

ALSO: Vandura Series - 6000, 6500, 7500 and 9500

Ask Alex C. or Marian or Alex H. about

"NEW" 1975 GMC 1/2 ton **DIESEL** Pickups

ALEX CURRIE MOTORS LTD.

Buick

Pontiac

GMC Trucks

ELMVALE

322-1292