



Co-op fertilizer warehouse

The new Simcoe District Cooperative fertilizer warehouse was officially opened two weeks ago on the 8 concession of Flos Township. The fertilizer custom blending warehouse will serve North Simcoe farmers,

and is ready for operation just in time for the 1977 planting season which has already started because of the warm dry weather.

Staff photo

June 'Forage Days'

Forage Days '77, an educational program for farmers, will be held at the Elora Research Station near Guelph, June 7, 8 and 9.

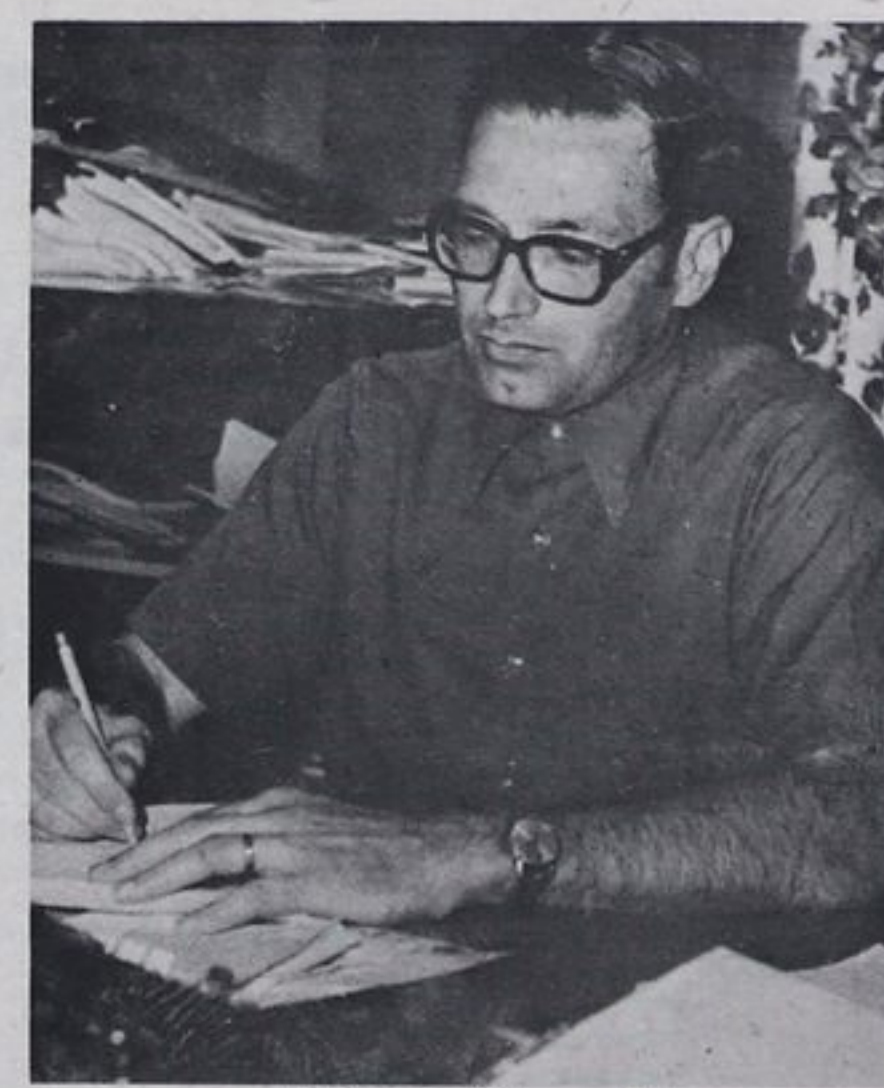
This program, one of the major agricultural events of the summer, will deal with all aspects of perennial forages: growing, harvesting, storing and feeding.

Sponsored by the Ontario Ministry of Agriculture and Food and the Ontario Agricultural College, the program is designed to provide farmers with the latest information on forages. Program organizers expect several thousand people to attend the event.

Forage Days '77 will feature tours to look at growing forage crops both for stored food and for pasture for beef cattle. The feeding of forages will be demonstrated and discussed at the Dairy Research Centre.

Harvesting equipment will be on display at the station. Speakers will discuss how to use the different pieces of equipment together so that they make a harvest and storage system.

Other exhibits will include products used in forage production such as seed, fertilizer and pesticides.



Alan Scott

Scott takes new position

by Alan W. Scott
This will be my final press release as Agricultural Representative for North Simcoe. On May 2nd I moved to the Stratford area to serve in a similar position in Perth County. I have enjoyed immensely the thirteen years of work in North Simcoe. I have appreciated the strong farm organizations in this area, the friendly hospitality of its residents, and the opportunity with many different people. The new location

provides an opportunity to move closer to the county in which I grew up and it also provides an opportunity for a new employment experience. Nevertheless Simcoe County and its residents will be greatly missed and we will always look forward to renewing acquaintances from this area. I would like to extend a very sincere thank you to County residents for their interest, cooperation, assistance, and friendly hospitality over the years.

University of Guelph offers soil test program

by Robert A. Humphries
Associate Agricultural Representative
North Simcoe-Elmvale

Soil Test Adjustments
Many farmers are taking advantage of the soil test program offered by the University of Guelph.

Soil test values are determined and fertilizer recommendations are provided for each field sampled.

Problems can arise if a farmer decides to spread manure on a field and still follows the commercial fertilizer recommendation based on "no manure added." information sent with his sample.

For example if your nutrient requirement for a corn field is 90 lbs. nitrogen per acre, 40 lbs. phosphate per acre and 110 lbs. potash per acre, and you decide at the last minute to spread ten tons of cattle manure per acre you will have to make some substantial adjustments.

In this case, the ten tons of manure per acre will reduce the nutrient need to 40 lbs. nitrogen per acre and 20 lbs. phosphate per acre and 20 lbs per acre of potash. This requirement can be met with a commercial fertilizer such as (16-8-8) at 250 lbs. per acre.

Lawn and Garden Soil Tests
The University of Guelph will continue to provide a soil testing service to home gardeners in 1977.

Effective immediately, the fee for this service has been reduced from \$5.00 to \$1.00 per sample. Sample boxes and information sheets are available at the Elmvale Agricultural Office.

The Limestone Additive
Agricultural limestone is a soil additive that is often overlooked until it is too late.

Limestone is essential because it makes nitrogen, phosphorus and potassium more available to the crop. It supplies both calcium and magnesium which are important elements for

plant growth. Soil bacteria are more active with an adequate supply of limestone in the soil.

Limestone should be applied according to soil test. It must be mixed with the soil by ploughing or discing. Spreading it on a sod field will have little effect. Agricultural limestone is available as calcite or dolomite. Dolomite is recommended when soil test readings for magnesium are 100 or below.

We are fortunate to have a supplier of high quality Agricultural Limestone in the County. McKean Quarries at

Collingwood are equipped to deliver and spread this product.

Soil pH levels should be checked before attempting to establish alfalfa, red clover or trefoil stands.

Dairy Heifer raising

Raising healthy, strong replacement heifers for a herd is a goal of every herdsman, and to do so, the newborn calf should get off to a good start.

The navel cord is just as susceptible to germs as an open cut. The navel cord should be dipped in an iodine solution immediately after birth.

If insects are making a home of your garden...



Get Diazinon Garden and Fruit Tree Spray.

- Kills sucking and chewing insects on fruit trees, flowers, vegetables.
- Controls leatherjackets (crane flies) and other common insects in lawns.
- Comes in liquid spray concentrate form.



LAKEHURST HOMES



Quality manufactured homes and cottages delivered to your lot and usually erected on your foundation in one to two weeks.

"WILDWOOD" cottages with natural redwood siding start at \$9995.00 delivered within 100 miles. "LAKEHURST" homes start at \$18,900.00 delivered to your lot complete

with carpet and drapes.

Come and see our model homes and let our sales consultants show you the easy way to build.

Our homes and cottages are built to meet or exceed the building code and are easily financed.

BUY NOW AND SAVE

THE HITCH HOUSE LIMITED  **HOME DIVISION**

Hwy. 11, 4 miles north of Barrie - SHANTY BAY (705) 728-9700



HANNA MOTOR SALES

HUME ST. 445-4300

COLLINGWOOD

HAS THE LARGEST SELECTION

OF FORD PICK-UPS IN THE AREA

AT

THE OLD PRICES !!!



Thank-You

On behalf of the Church family, the management and staff of Church's Farm Supply Ltd., we wish to thank all our relatives, friends, neighbours, customers and suppliers for their most gracious expressions of sympathy which were extended to us in the recent loss of our dear one, Charles Church.

In respect to Charles Church, we would also like to take this opportunity to inform our customers and suppliers that Church's Farm Supplies Ltd. will continue in business in the same traditions that were set up by Charles Church and which have proved so successful. The new management now in operation is: John Church, General Manager; Al Blackwell, Office Manager; Russ Blackman, Sales Manager; Merton Rea, Parts Manager, and Don Orchard, Service Manager.

We extend our thanks to our many customers for their loyal patronage in the past, and our promise to give good and faithful service in years to come.

Church's Farm Supplies Ltd.

for TOTAL crop service call CO-OP

COMPLETE FERTILIZER SERVICES

Prescription Blending

Get the exact nitrogen, phosphate, potash formula that you need for your yield goal. CO-OP custom blending returns the most for your crop investment.

Bulk Spreading
Save the cost of labour and equipment investment by letting CO-OP deliver and spread your exact fertilizer formula.

Supplemental Nitrogen
Aqua, anhydrous or dry, your CO-OP has nitrogen and all the equipment necessary to apply it to your crop.

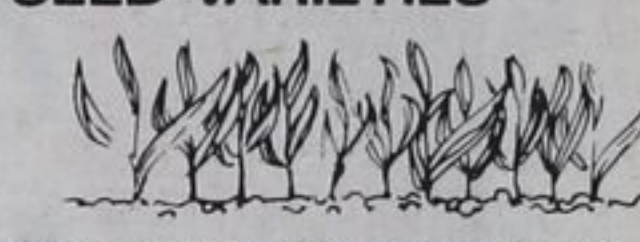
Bag and Bulk Pickup
You can save by picking up your CO-OP fertilizer in bulk or bag. Your CO-OP has every fertilizer option to fit your plant food needs.

CHEMICAL HEADQUARTERS



Your Co-operative has the complete range of chemicals necessary to control just about any condition during your crop cycle. Free booklets and instructions are available.

SEED VARIETIES



CO-OP has the seed to give you a wide choice of varieties suitable for Ontario soils, climate and required yields.

CO-ORDINATED PROGRAMS

Every year, your Co-operative publishes the latest information and recommended growing techniques in a series of crop production guides. Ask for your free copies.

GRAIN MARKETING



CO-OP has more grain handling and marketing facilities than anyone else in Ontario. Talk to your CO-OP Grain Marketing people about marketing your grain.

CO-OP SERVICE

SIMCOE CO-OP SERVICES

259 Innisfil St., Barrie

726-6531

8th Concession, Flos Twp., just West of Hwy. 27, Elmvale

322-3041