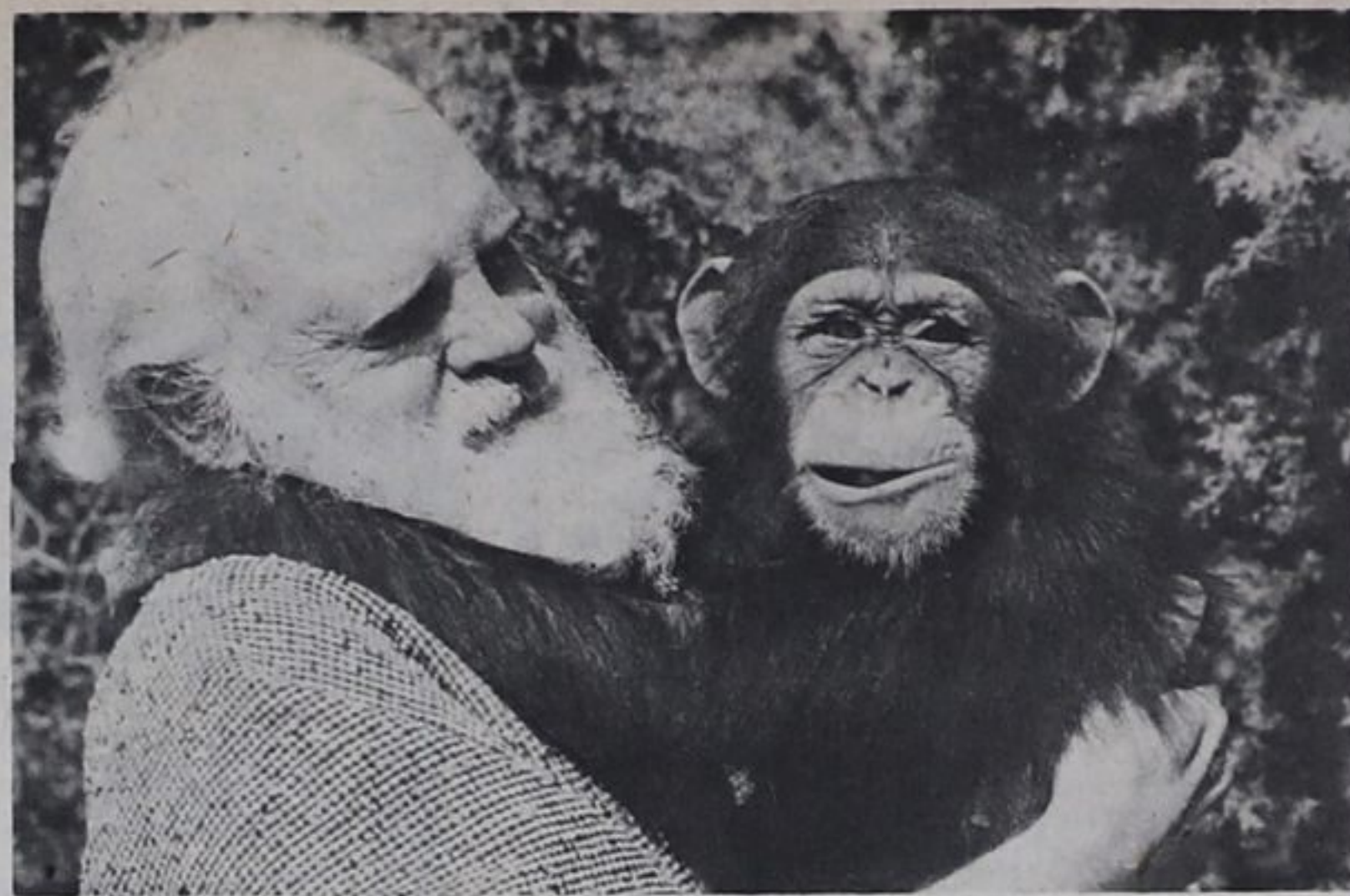


'Noah' legend explored

by Terry Dupuis
Sun Classics Pictures' "In Search of Noah's Ark" opens tonight at both the Odeon Theatre in Midland and the Pen Theatre in Penetang.

examines evidence supporting the Ark's existence today a top Mount Ararat in Eastern Turkey. The film, produced by Charles Sellier Jr. and directed by James L. Conway, is another in a series of motion pictures designed to explore some of our world's unresolved

mysteries. Previous films in the series have been Chariots of the Gods, The Outer Space Connection and The Mysterious Monsters.



Vern Adix as 'Noah'

"In Search of Noah's Ark" is based on a book of the same name by Ark scholar David Balsiger and producer Sellier. Sellier also wrote the screenplay for the movie with the movie's director James Conway. Their movie is based on exhaustive research, expeditionary evidence, films and photos and scientific evidence.

For 5000 years Noah's Ark has been a fascinating blend of fact, fable, myth and mystery. "In Search of Noah's Ark" attempts to present the facts, dramatize the fable and demystify the myth with an accurate and complete account of the great legend. The film offers data ranging from reports of ancient pilgrims to NASA Satellite photographs to validate its premise that the biblical ark rests today on the treacherous slopes of Mt. Ararat in Eastern Turkey.

"In Search of Noah's Ark" is a movie that should be of interest to the whole family

Call Contact

526-9333

Hours 9 a.m. to 5 p.m.

Monday to Friday (Except Holidays)

With the first real snow storm of the winter hitting our area even before winter has officially begun it makes us stop and think of the many happenings that will be taking place between now and Christmas that we are involved in not only as a community but personally.

With the snow and the decorations up on Midland's King Street it starts us thinking of shopping lists and what we all must do in the next six weeks like deciding on a light or dark fruit cake, mince pies or tarts, shopping for special toys and putting them away hoping the little ones of the household will not find them before Christmas.

When shopping for toys, remember toys can be dangerous - Dolls are for loving, games are for playing, all kinds of toys are for learning as well as for having fun with, but some of those bright-eyed dolls, electric stoves, rattles and toy musical instruments are threats to your child's health.

The Canadian Public Health Services estimate that about 100,000 children are injured every year as a result of accidents from toys. For your peace of mind, check carefully before buying a toy for your child. Choose toys appropriate for the child age (many toys have recommended ages on the package). Remember that younger brothers and sisters may have access to toys bought for older children. Check fabric labels for notice of flame resistance. Check instructions and teach the child the proper way to use any toy that might cause injury through misuse. Avoid toys that produce excessive noise - even a toy cap gun fired too close to a child's ear can cause damage. Avoid shooting games, especially those with darts and arrows, unless kept by and played with under adult supervision. Discard broken toys for they too can be dangerous. By following some of these suggestions when shopping you will be assured of a safer and happier holiday season.

If you know of a shut-in or elderly person who would enjoy an outing, plan to invite them out to see the lights and help them do their shopping too. Darkness falls early now so make sure they are escorted safely to their door upon returning.

The show Up With People has gone from Midland but for us that had the pleasure of seeing the show on Saturday, November 13th at Midland Secondary School we are the fortunate ones and are all much richer for having seen it. I am sure the host families that opened their doors and hospitality to these young people all benefited as I did by just meeting these talented young people. The message that was brought forth through the media of song and dance to me had more impact than many sermons I have heard. Those of the community that shared this unique experience I am sure will long remember the message they established in our hearts and minds towards our fellowman. We wish them continued success as they travel on their way.

By now everyone should be aware of the upcoming elections that are to take place on December 6th. It is our duty as conscientious citizens of the community to learn all we can about the people that are running for office and their platforms. It is very important to elect good people to be your representative on the municipal councils, school boards and public utilities commissions.

These men and women, and those they appoint to other local bodies such as hospital boards, ensure that our communities continue to receive the wide variety of services upon which we all depend.

Remember the famous words of Winston Churchill "Democracy is the worst form of government - except for all others."

Happiness is helping others to help themselves.
Mary M. Gibson,
Administrator.

Belcher obituary

The death occurred on Thursday, November 18, 1976 of Earl Edward Belcher in his 42nd year. Beloved husband of June Thompson of Waubushene, dear father of Beverly, at home, loving son of Mrs. Florence and Captain Reginald Belcher of

Victoria Harbour, he was also brother of Inez, Mrs. Joseph Hatton of Penetanguishene.

Funeral services were held from the Nicholls Funeral Home on Monday, November 22nd.

Interment at the Victoria Harbour Union Cemetery.

PUBLIC INFORMATION NIGHT
at MSGR. Castex School
Old Penetang Rd.
on Thurs. Dec. 2/76 at 7:30 pm.

- A series of speakers workshops and seminars on topics of current interest to the public.
- Everyone welcome - No Admission.
- Pre-registration a must. Deadline Nov. 26/76.
- For full details see the article about it in to-day's paper
- Choose three Workshops - you will get two.
- For registration fill out the form below and bring or mail it to:

Public Information Night
c/o MSGR Castex School
Old Penetang Rd. Midland

Name _____
Address _____
Phone _____
Choice of Workshops Workshop Name
No. 1 _____
2 _____
3 _____
Available only if no's 1 & 2 filled

Christmas Carol SONG SHEETS



extra copies available at
The Midland Times
525 BAY ST. MIDLAND
526-9369
NO CHARGE

BROOKLEA
Motel & Dining
Room

Catering for
Weddings, Banquets,
Luncheons, Parties

Meeting rooms available
Highway 27 MIDLAND 526-9872

BINGO
ELMVALE LEGION, EVERY THURSDAY

- 20 Games
- Specials

\$50. jackpot going every night.

Entry Fee \$1.00
Refreshments

WEDNESDAY THRU
SATURDAY

The Greatest Discovery of Our Time
In search of Noah's Ark

High atop a mountain in Eastern Turkey is a giant 5,000 year old wooden ship containing hundreds of stalls and cages. IS IT NOAH'S ARK?

Limited engagement Saturday matinee - 2 Free list suspended Golden age accepted

ODEON THEATRE
King St. Midland Niteley 7&9 526-5791

LOWREY MODEL TGB44K
A "Pontings exclusive"

Play-along Fun
Learning Fun
Listening Fun
Recording Fun

TGB44K ORGAN.....\$1795.00
CASSETTE & KIT.....\$300.00
VIBRA TREM (LESLIE). \$250.00
5 BEGINNER BOOKS..... N/C
FROM LOWREY...+\$2,350.

All this plus a free bench and free delivery can be yours for only
\$1995. plus tax

NOTE: A small deposit will hold any item at Ponting's until Xmas.

All this is included with your new Lowrey Organ:
• Deluxe Bell & Howell C-2 Cassette Recorder/Player
• Fun at the Lowrey, Part I
• Fun at the Lowrey, Part I Cassette Tapes 2
• Lowrey "Prisms" Minit Music Song Book and Cassette
• Lowrey "Mystical Blends" Song Book and Cassette.
• Lowrey "Stage Charms" Song Book and Cassette.
• Blank Cassette Tape
• Fun at the Lowrey Chord Chart

ponting's
MUSIC CENTRE
68B MAPLE AVE 726-1800

The Greatest Discovery of Our Time
In search of Noah's Ark

High atop a mountain in Eastern Turkey is a giant 5,000 year old wooden ship containing hundreds of stalls and cages. IS IT NOAH'S ARK?

Playing Wed., Thurs., Fri., 7-9 p.m., Sat. matinee 2 p.m.
PEN THEATRE, PENETANG

LOOK HERE FOR
Dining & Entertainment

THE *Windrifter* RESTAURANT & TAVERN
Lunches: Hot & Cold buffet- \$3.25
Dinner: Roast Beef Specialty- \$5.95

Hours: 12 noon - 10 p.m. Daily
TOWN DOCK
TAKE OUT 526-6622 RESTAURANT 526-9221

WATERGATE
Steak House & Tavern

Offers the finest steaks, seafood and service. Fully licensed.
Business Men's Luncheon Monday-Friday 12:00-2:30 p.m.
Weekend Entertainment
Reservations Main St. Waterfront Penetanguishene call 549-8671

Highland Motel and Restaurant
Business Men's Special Luncheon

Soup of the Day Monday
Farmer's Sausage/ apple sauce on a toasted Kaiser bun.
Tuesday
"Gobbling good Tom Turkey" with cranberry sauce on a toasted Kaiser bun.
Wednesday
Country style ham and swiss cheese on a toasted Kaiser bun.
Thursday
"The Beefeater" - a heap of beef on a toasted Kaiser bun.
Friday
Fresh boiled corned beef of the day on a toasted Kaiser bun.

Tea Or Coffee
King St. Hwy. 12 526-9307

For The
Finest in
DINING & ENTERTAINMENT
LOOK HERE

Freda's
Elegant dining in a cozy atmosphere

Freda's
THE ULTIMATE IN FINE CUISINE
LUNCH 11 A.M. - 2 P.M.
Dinner - by Reservation only.
Gourmet food prepared for your individual taste
342 King Street, Midland 526-4851

Panorama Inn

Where the people are friendly - the atmosphere relaxed and comfortable.
Come in soon and have a good time.
Fully Licensed
Business men's luncheon 2 specials daily
El Toro
COCKTAIL LOUNGE & BAR

Hwy. 27 and Balm Beach Rd. MIDLAND 526-8483

Bavarian House
Enjoy our specialty of German Cuisine with a Canadian Taste
Excellent Dining Facilities overlooking beautiful Georgian Bay
Open for Meals:
Monday to Saturday 12 noon - Midnight
Sunday: 12 noon to 10 pm.
Contemporary German Disco
Music by Helmut Tietz and His **Studio 67**
Located two miles past Martyrs Shrine from Midland, Hwy. 12 and Con. Rd. 4
Dancing Fri. & Sat. 9 pm. to 1 am.
(Only Restaurant in area mentioned in Book "Where to eat in Canada 76-77")
534-3202