

Graduate

Gordon Earl Widdes graduated May 21 this year from the University of Waterloo with a Bachelor of Mathematics. Widdes, a former graduate of Midland Secondary School, is the son of Earl and Shirley Widdes. He is now employed by Canadian General Electric in computer information services.



Gordon Widdes

Hurononia Community Calendar

Wednesday, September 8
— The public is invited to attend Open House, Bazaar and Tea, at the Georgian Manor, Penetanguishene, from 1:30 p.m. to 4:00 p.m. There will be a sale of crafts, baking and candy. Also a tour of the Manor.

Wednesday, September 8
— FLOWER NAME SCRAMBLE - A ten week, exciting flower naming contest, starts today, in this publication. Be sure to join with your neighbours in participating. Special note: All entries should be held until the master entry form appears, after the ten week period.

Thursday, September 9
— Wasaga Euchre Club will resume their weekly Euchres, at Wasaga Hall, below the O.P.P. office, 8:30 p.m. Lunch provided. All are welcome.

Saturday, September 11
Sunday, September 12
— Coldwater Canadiana annual chicken dinner to be held from 4:00 p.m. to 7:00 p.m. at the Log House, Hwy. 12, near Coldwater. Tickets on sale at the door. Also a sale of home baking.

Sunday, September 12
— The Annual Memorial Service at the Soldiers' Monument in Waverley will be held at 2:30 p.m. Please plan to attend and honour those who gave their lives.

Monday, September 13
— Registration for Cubs and Scouts will take place at 7:00 p.m. in St. Ann's Church, Penetanguishene.

Monday, September 13
Big Sisters Association of Huronia annual dinner meeting, at the Brooklea Golf and Country Club

Cocktails: 6:00 p.m. Dinner: 6:30 p.m. Guest speaker will be Terry Spierans, Director of Community Service at Y.M.C.A. in Hamilton. Tickets available from Thompsons Furniture Midland and E and R Fashions - Penetang.

Monday, September 13
— The fall project for '76 is "Focus on Living." Girls between the age of 12 and 26 interested in taking this project are asked to meet Monday September 13th, 7:00 p.m. at All Saints Hall, Peel St., Penetanguishene.

service directory

HOME SERVICE

Your ad here

Drywall Problems?

- Installation
 - Boarding
 - Taping
 - Spraying
 - Handmade Filling
 - 20 yr. experience
- Call Louis 526-7251

BELANGER ALUMINUM SALES
Specializing in Aluminum Siding Soffit and Face Board Windows, Doors, 5" Seamless Eavesstrough in choice of 4 colours
Phone Collect 526-6836
338 Eighth St. - Midland

JOHNNY'S LOCKSMITH SERVICE
Box 48
Victoria Harbour
Ontario, Canada
L0K 2A0
Mobile Unit
Bonded
534-3722

Custom Upholstering
Recovering and Restyling
— Boat Tops —
Free Pickup and Delivery
Also Free Estimates
Phone Today
SUNNYSIDE UPHOLSTERING
526-6411

HOME SERVICE

Authorized sales & service
Electrolux (Canada) Limited
18 Alliance Blvd
Barnes Branch
tel: (705) 728-3392
also require full or part time sales person

PAINTING INTERIOR DECORATING WALL PAPERING
Reasonable Rates
Phone after 6 p.m.
549-2662

Dusome Building Products
Specializing in Alcan Aluminium Siding, Troughs and Windows
549-8597
Box 240
Penetanguishene

Harrison Metal Works
For Free Estimates on Aluminum Windows Doors Siding Awnings Patio Doors and Insulated Glass
Sales, Service, Repairs
Vinden St. 526-6870

BUMSTEAD'S Electric & Plumbing
Service & Repairs
322-2613
Wyevalle, Ontario

WHEELER ELECTRIC
Telephone 424-0234
Residential Commercial Industrial
Angus, Ontario

HOME SERVICE

REYNOLDS ELECTRIC Wyevalle
Wiring - Plumbing Heating
322-2300

MINNINGS ELECTRIC Elmvalle
Electrical Contractor
322-1307

EWART BALL
Septic Service
Tanks Pumped
835-2406
Hillsdale

Your ad here

INSURANCE

DUTCHER & CORBETT LTD. INSURANCE
322-1533
Merv Corbett
Fred Harpell.

MORTGAGES

FINANCIAL ENTERPRISES
Mortgage Brokers
Phone 726-7130
or 429-2815

You can do it if you try! We'll help



DO-IT-YOURSELF SALE

7 1/4" 'BLACK & DECKER' CIRCULAR SAW
Features 9-amp, burnout-protected motor. Cutting depth of 2 3/8" at 90°, 1 7/8" at 45°. Top quality from 'Black & Decker', top value from Home Hardware!

\$24⁸⁸

1265-106-1

4 DAYS ONLY

Black & Decker Workmate™

A fold-away, portable work centre, giant vise and sawhorse, all in one! Features 29" vise grip, and holds materials up to 10" wide; grips irregular, tubular or circular objects rigidly, makes cutting easier, safer, more accurate.

\$58⁸⁸

1080-305-1

'SKILSAW' 16" CHAIN SAW

\$129⁸⁸

Features 16" cutting blade with chain design that controls depth of bite, provides smooth, easy handling. Easy-start 4.2 cu. in. motor.

5240-205-1

3-WIRE (16.3) OUTDOOR EXTENSION CORDS
Ideal for use in cold weather.

50-FOOT 100-FOOT
\$7⁸⁸ \$14⁸⁸

3628-523-10 3628-532-5

REPLACEMENT DOOR STRIKE 58¢
DOOR CLOSER WITH CHAIN \$4²⁸
SPRING CHAIN DOOR CHECK 98¢

2334-833-100 2334-334-10 2334-557-10

'STRIP-SEAL'
Easy to apply or remove. Requires no tools! Acts as weatherstrip AND caulking. Pack of 10 Strands - 14 FT.

44¢

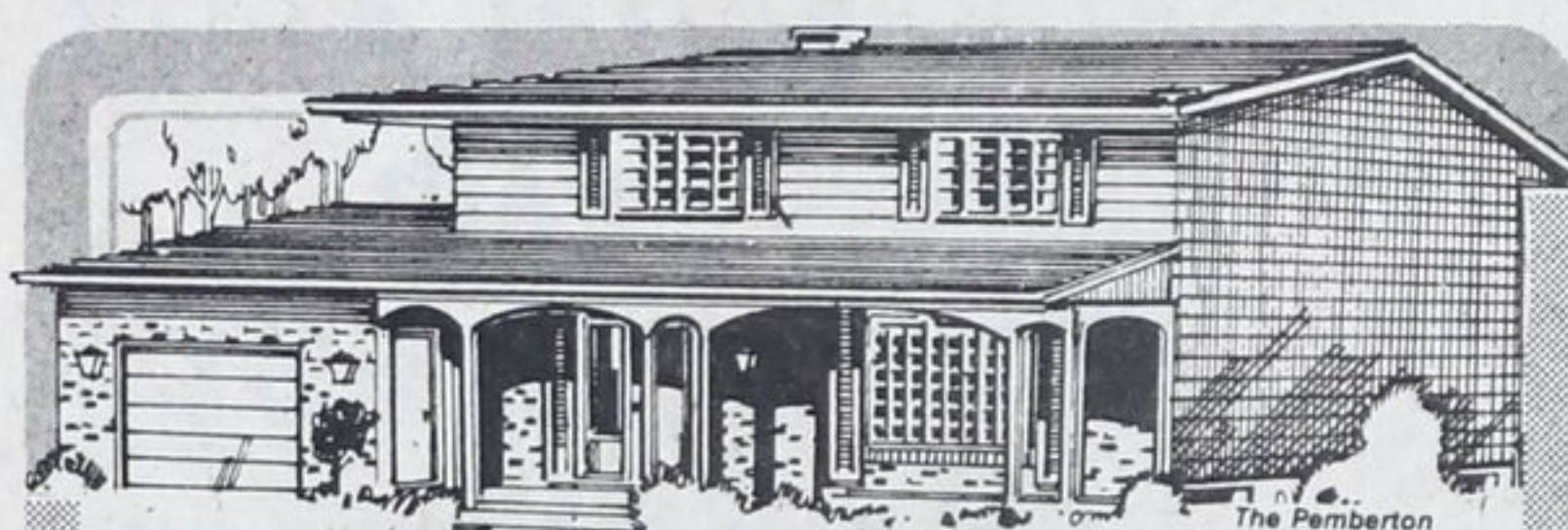
5574-032-24

PUSH-BUTTON LATCH for doors 1 1/8 to 1 3/4" thick 2334-726-10 **\$3⁴⁸**
TULIP KNOB LATCH for doors 1 1/4 to 1 3/8" thick 2334-753-10 **\$3⁴⁸**
SILENT DOOR CLOSER with adjustable closing power 2334-325-10 **\$3⁴⁸**

'ARROW' STAPLER KIT
Includes T-55 all-purpose stapler gun slip-on wire attachment, slip-on screen attachment, plastic storage case, all-steel stapler lifter, 1250 (5/16") staples, 1250 ceiling tile staples.

\$14⁸⁸

1072-403-12



Check What Makes a Beaver Home Such a Great Investment



- ✓ You can actually build your own home and SAVE money. Most of the difficult work is done for you at the Beaver Homes factory.
- ✓ Imagine the additional pride and pleasure you'll derive from building your own home. Quite an accomplishment. The people at Beaver will, of course, be on hand to offer any advice you may need.
- ✓ The products and materials that go into a Beaver Home are the best. This, combined with Beaver's guarantee of excellence, assures you of a fine quality home.
- ✓ You can choose your home from a selection of some 60 beautiful designs — there's sure to be just the home you really want. No need to compromise.

And there are many more reasons. Make that first move to-day... mail the coupon for a FREE catalogue.

Mail to: **BEAVER HOMES** Name _____
570 Harrop Drive Address _____
Milton, Ontario, L9T 2X9
Code _____ Phone _____

I own a lot I plan to build this year

BEAVER HOMES A division of the Beaver Lumber Co. Ltd.

Coldwater Home Hardware
Coldwater
686-3375

Elmvalle Lumber Ltd.,
Elmvalle
322-2841

Midland Home Hardware,
830 Young St.
526-4361