

Midland wins one game

# Midland minor lacrosse hosts bantam tourney

Midland Minor Lacrosse hosted its annual bantam tournament in Elmvale Sunday. Five teams took part in the tournament. Three from Barrie, one from Midland and one from Huntsville. Action got underway at 9 a.m. with Barrie Les Bertram against Barrie Kinsmen. Les Bertram squeaked by with a 5-4 win. At 10 a.m. Huntsville took on Barrie Wakelin Texaco and came away with a 21-12 victory. Midland took on the Les Bertram team but came away on the short end of an 11-9 score. The Midland team played their last game and were in contention until the final whistle. At noon Barrie Kinsmen played Barrie Wakelin Texaco in the closest game of the day. The Kinsmen won the game 9-8, scoring the

winning goal with just 18 seconds left of play. This game completed the elimination round and decided the contestants for the consolation and championship games. Following an hour lunch break, play got underway in the consolation game between Barrie Kinsmen and Midland Civitans. The Midland team played two good periods but finally succumbed to the steady Kinsmen attack in the

third period. The final score was 12-5 giving the Kinsmen the consolation trophy. The championship game between Barrie Les Bertram and Huntsville got underway at 3 p.m. Three periods later, after a superb exhibition of passing, shooting and positional play, the Huntsville team emerged as champs with a 22-5 victory. Individual trophies for the Most Valuable Player of each team were awarded following the championship game. The recipients were for Barrie Kinsmen, Darrel Nutt; Barrie Wakelin Texaco, Albert Walker; Barrie Les Bertram, Warren Won; Midland Civitan, Paul Hahn; Huntsville Skokies, Barry Breaer and Ron Hollinshead. The pair from Huntsville put on such a display of lacrosse skills that it was impossible to choose between the two.



Hot and dusty

Action was hot and dusty for the separate school baseball tournament held last Saturday. The boys played in Little Lake Park, with the girls taking advantage of the cooling breeze at Tiffin Park. Sacred Heart girls emerged with a championship. Staff photo

### SIMCOE HEARING AID CENTRE

252 KING ST. STREET, MIDLAND

FOR OFFICE OR HOME APPOINTMENT  
PHONE 526-4600

Special Discount for Senior Citizens.

# BINGO

PERMIT 176087

At the Collingwood Arena, Saturday June 12, 1976  
WIN UP TO \$2500.00 IN CASH PRIZES

- ★ 4 Early Bird Games ★ 20 Regular Games at \$25.00 a game.
- ★ 1 Share Wealth ★ 1 Lodge Special Game ★ 1 Collingwood Special ★ 1 Players Special

JACK POT GAME... \$425.00

Wild cards pay double — only on regular games

Admission \$1.00 Early birds starts at 7:30 pm. every Sat. night

Sponsored by Victoria Loyal Orange Lodge no.943

Charitable Donations: True Blue Orphanage  
Trillium Home for Aged

# CASH & CARRY

PLYWOOD & LUMBER

it's time to make the grass look greener...



"Bar 3" Wood Fence

Improve the look of your back yard or lot with this economical "Rancher" style fence. The fence is three feet high and consists of cedar posts with cedar or spruce rails. Price for the "Rancher" is based on one 4 x 4" post and three 1 x 6"-8" rails. Nails extra.

CEGAR POST, SPRUCE RAILS

85¢ In. ft.

CEGAR POST, CEDAR RAILS

\$1.24 In. ft.

REMEMBER FATHERS DAY JUNE 20th

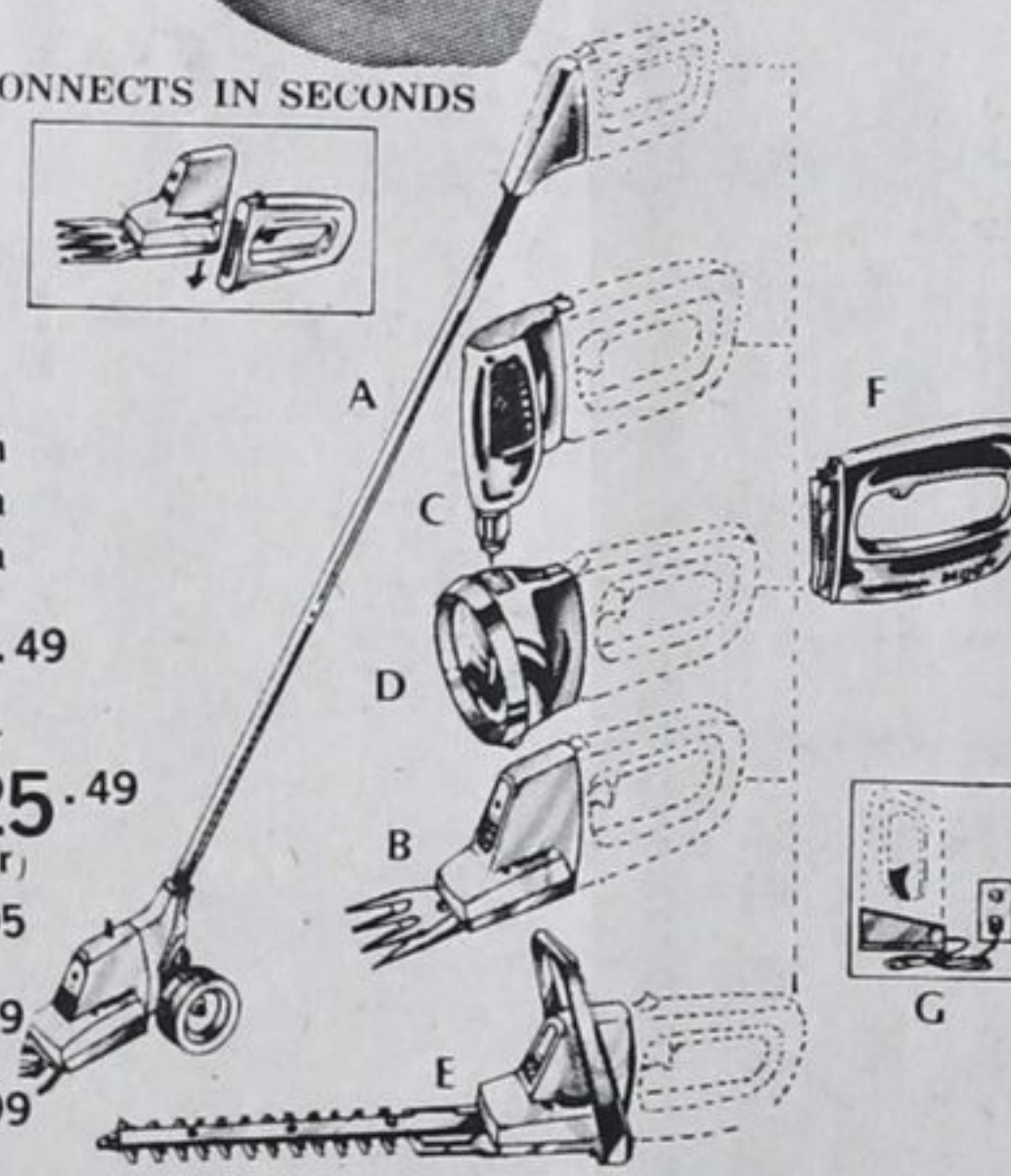


CONNECTS IN SECONDS

### Black & Decker MOD 4 Cordless System

The MOD 4 System is the very latest in cordless power tools. It consists of a rechargeable Energy Pak that accepts a range of snap-on tools.

- 1) UPRIGHT GRASS SHEARS \$29.49 (includes energy pak and recharger)
- B) HAND HELD GRASS SHEAR \$25.49 (includes energy pak and recharger)
- C) 1/4" DRILL HEAD \$19.95
- D) SEALED BEAM LANTERN \$7.99
- E) SHRUB TRIMMER \$15.99
- F) ENERGY PAK \$14.99
- G) RECHARGER \$4.49



### Cedar Lumber

2 X 4"	1 X 6"
22¢ FT.	23¢ FT.
2 X 6"	4 X 4"
40¢ FT.	50¢ FT.

### Economy Woodstain

Protect and beautify your fences, lawn furniture, etc. with this quality stain. Available in popular redwood or cedar colours. Hurry! At this price it won't last long!

\$2.99 Gal.

### Garden Tools

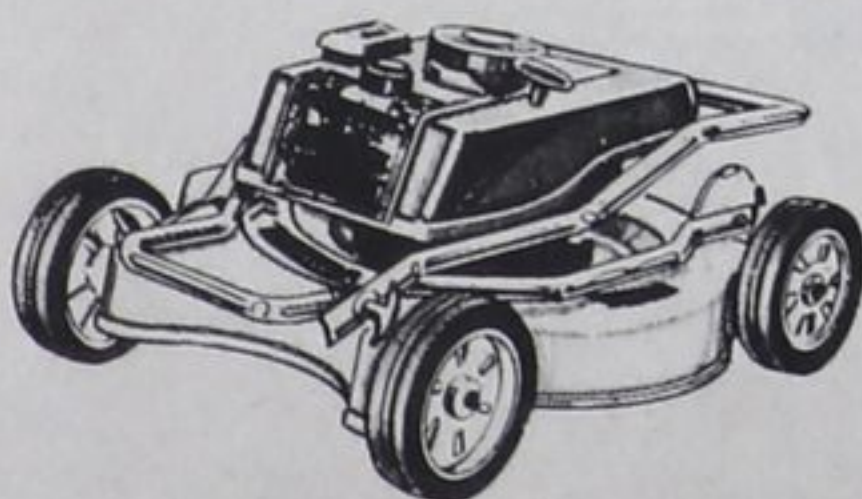
Comet Brand Spade \$6.49	Garden Hoe \$7.99
Cultivator \$6.99	Grass Shears \$7.79



### Wheelbarrow

A tough little worker that features a solid rubber tire, tubular steel frame and 'X' type legs. Blue with white plastic handles. Holds 3 cubic feet. See it now at your local store.

\$15.95 each



### Canadiana Lawn Mower

The Gran Prix lawnmower features 19" turbo-vacuum deck, washout port, safety footrest and chromed folding handle. Powered by a 3 1/2 HP Briggs and Stratton recoil start engine.

\$89.95

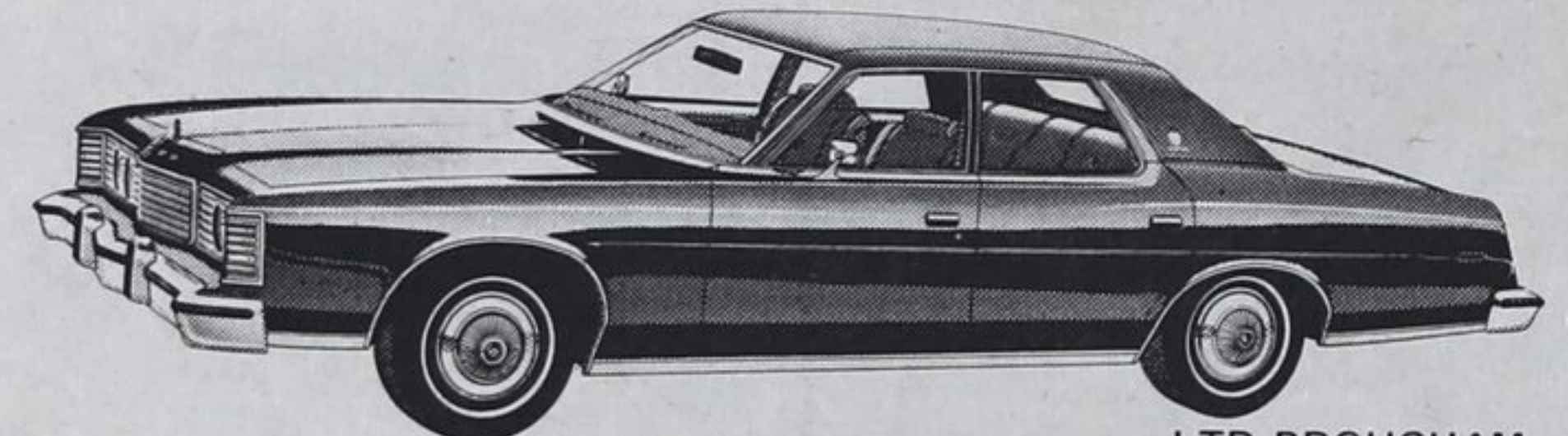


### Grass Seed

Lazy Lawn grass seed is a No. 1 Canadian grass seed mixture for general home and landscape needs.

\$1.99 2 LB. BAG

## OLD FASHIONED BARGAIN DAYS

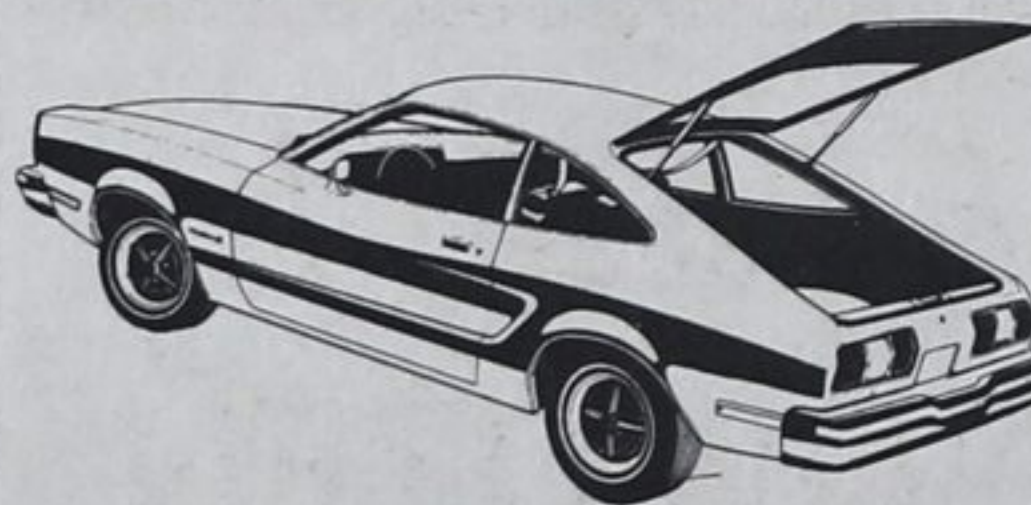


LTD BROUGHAM 4-Dr. Pillared Hardtop

PINTO SEDAN



This full range of cars is yours to bargain for at your convenience. Our sales staff will help you select the car that best suits your needs.



MAVERICK GRABBER

### USED CARS - USED CARS -

- 76 Ford F 150 V-8, auto., ps., pb., radio H 68251
- 75 Ford LTD 2 dr., V-8, auto., ps., pb., radio, elec. defrost FKV 10
- 75 Ford F 100 V-8, auto., ps., pb., E 83261
- 74 Ford Custom V-8, auto., ps., pb., radio, FKV 247
- 74 Ford Galaxie 500 2 dr., V-8, auto., ps., pb., radio, HEZ 760
- 74 Mercury Montego 2 dr., hdt, V-8, ps., pb., radio, HUV 325
- 74 Maverick 4 dr., sedan, 6 cyl., auto., radio, FKV 258
- 73 Ford Torino 4 dr., V-8, auto., ps., radio, FFA 267
- 73 Ford Maverick 2 dr., 6 cyl. stan. trans., FKV 018
- 73 Ford Pinto Wagon 4 cyl., auto., BPC 198
- 73 Buick Century 4 dr., V-8, auto., ps., pb., radio, FKS 191
- 72 Meteor Montcalm 4 dr., V-8, auto., ps., pb., HFV 004
- 72 Mercury Montego 2 dr., hdt, V-8, auto., ps., pb., radio FCU 340
- 72 Pontiac Lemans 2 dr., hdt, V-8 auto., ps., pb., radio FKS 573

## Don Hocken Ford Sales

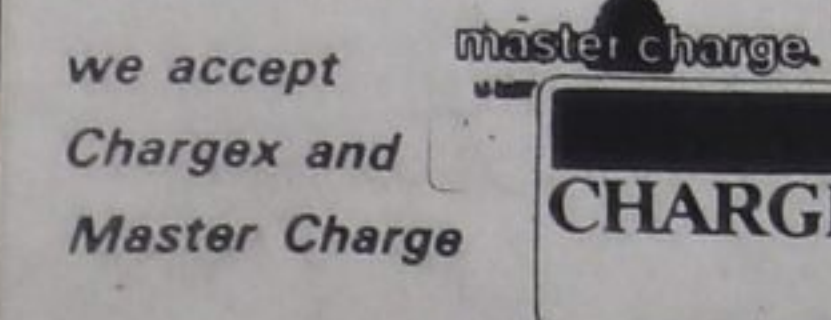
Yonge St.

Elmvale

322-1241

ON THE SPOT FINANCING

LEASING



Barrie: Highways 26 and 27  
Penetang: 188 Main St., 549-7404

OPEN: Mon., Tues., Wed. and Thurs. from 8 a.m. till 6 p.m.  
Fri. from 8 a.m. till 9 p.m. — Sat. from 8 a.m. till 4 p.m.

