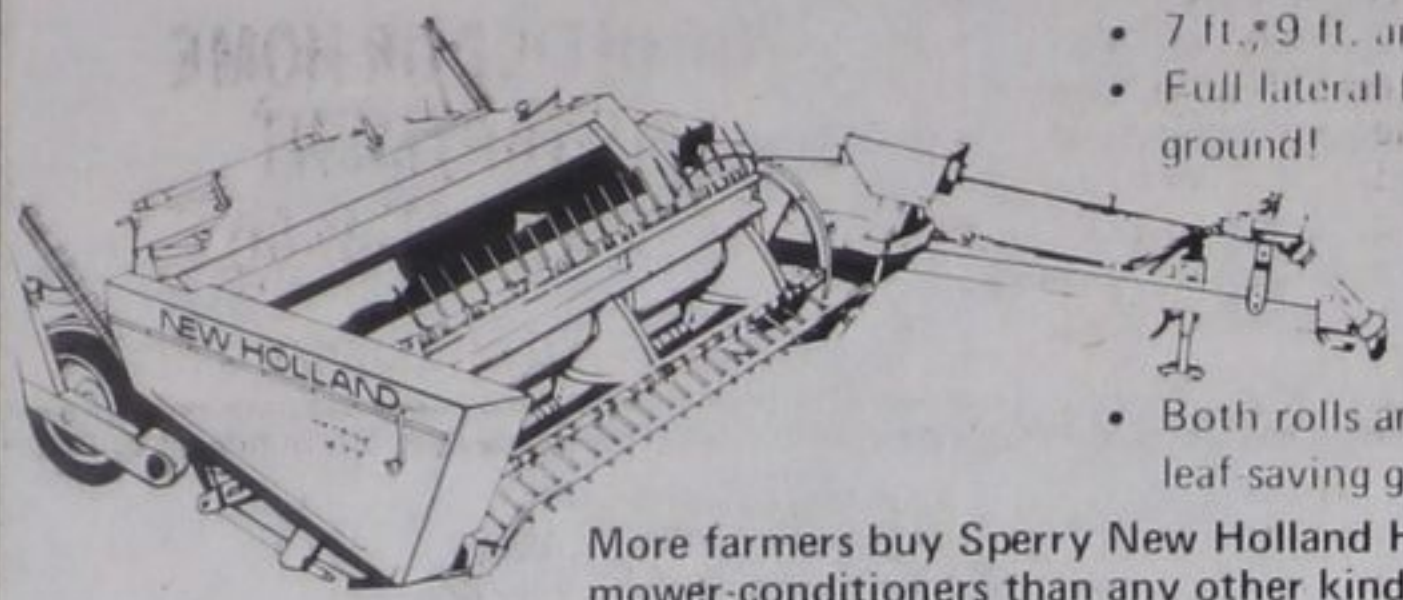


Quality Haymaking Begins Here.

SPERRY NEW HOLLAND HAYBINE MOWER-CONDITIONERS



- 7 ft., 9 ft. and 12 ft. models to choose from!
- Full lateral flotation lets the header hug the ground!
- Intermeshing, high speed rolls practically eliminate plugging!
- Both rolls are rubber, to treat the crop with leaf saving gentleness!

More farmers buy Sperry New Holland Haybine mower-conditioners than any other kind!

Your complete Tractor Headquarters

Church's Farm Supplies Ltd.

176 Burton Ave. Barrie, Ont.
Phone: 728-2373



Plan your pasture feeding program around CO-OP 14% Dari-Flo Dairy Ration

In the Spring and early Summer, pasture will provide the major part of the forage diet. Grasses and legumes are high in protein and can support relatively high levels of milk production without additional protein supplementation. The limiting factor for high milk production during this period is more likely to be lack of sufficient energy. Under these conditions, CO-OP 14% Dari-Flo Dairy Ration is the feed recommended to provide the additional energy necessary to maintain condition in high producers.



CO-OP 14% Dari Flo Dairy Ration is a high energy, low protein diet specifically formulated to provide least cost milk production when fed on pasture.

CO-OP 14% Dari-Flo Dairy Ration can be purchased in pellets or mash, in bulk or bag from your Co-operative. Keep in mind too that if you still have grain, you can formulate your own balanced ration with CO-OP 32% Dari-Flo Dairy Supplement.

Consult your Co-operative feed specialist for further information on the best utilization of your home grown grains.

SIMCOE CO-OP SERVICES

"A Pleasant Place to Deal"

259 Innisfil St. Barrie 726-6531

CO-OP Dairy Feeding Programs . . . research proven for profit.

Seek a reputable dealer

Consumer hints on buying beef in bulk

Many consumers may presently be considering purchasing beef in bulk in the anticipation of barbecue season and fluctuating prices.

Before heading out to buy, you need to realize a side of beef is one half the carcass of the animal cut down the middle from front (head) to rear (rump).

When a 'quarter of beef' is talked about, it refers to 'half a side' which can either be the front half or hind half. The front quarter will contain a higher proportion of less tender cuts.

Consumers should be aware that bulk beef is normally sold on a 'hanging weight' basis. This is the weight before the meat is cut, or any fat trimmed and bone removed. There will be about 25 per cent waste from a side. For example, if you buy a 300 lb. side, only approximately 225 lbs of beef will go into your freezer. This means the actual price per pound of beef is higher than the quoted sale price. If the sale price was 90 cents per pound, the price actually paid is 90 x 300 divided by 225 which equals \$1.20 per lb. Always check to determine if the quoted price includes the price of cutting, wrapping and freezing.

Be sure to ask your butcher to label each package with the cut and the weight. The top grade is Canada A, which represents about two-thirds of all beef carcasses, and is the grade handled extensively by retail chains. Canada A grade beef is divided into 4 fat categories, with 1 the leanest and 4 the fattest.

Consequently, trim on an 'A1' carcass is less than on an 'A4'.

Have your butcher flash freeze meat if possible. If not, freeze as quickly as possible at or below 0 degrees F. Do not pile large quantities of meat in the freezer at one time. Spread meat through the freezer.

Buying a bulk supply of beef represents a major dollar outlay, so seek out a reputable dealer and avoid unrealistically low advertised prices.

Making good use of homegrown fertilizer

This spring, farmers are making good use of that homegrown fertilizer — manure, as a supplement to commercial fertilizers.

Manure not only supplies the basic nitrogen, phosphorus and potassium, but also all the other elements essential for plant growth plus organic matter.

Manures are not all the same. They are influenced by livestock species, age of animals, methods of feeding and bedding, as well as manure storage and handling.

Manure can now be analysed by the Department of Land R source Science at Guelph. The cost ranges from \$11.50 to \$14.50 per sample depending on the level of sophistication. Many farmers take time to calibrate sprayers, but how many calibrate their manure spreaders. Application rates tend to be underestimated on many farms.

Spraying Checklist
The weed spraying season will soon be upon us and it might be timely to review a spraying checklist.

1. spraying speed — you must decide in advance on a constant speed to ensure uniform application. This is usually 4 or 5 m.p.h.
2. water — use only clean water that has all debris, sand and mud removed.
3. agitation — provision must be made to return 3 to 5 gallons of solution to the tank each minute.
4. pumps — they should be calibrated at least once a year.
5. nozzle tips — these should be checked regularly for wear. They should be replaced before they deliver 10 per cent more than they did when new. There are four nozzle materials available — brass, plastic, stainless steel and hardened stainless steel. Choose the material least suited to the herbicide being used.

6. cleaning the sprayer — pump at least 50 gallons of clean water through the system when changing herbicides — clean nozzle tips and screens as well.

7. sprayer calibration — this is probably the most important step before going to the field. Calibration is simply a determination of gallons of spray being applied per acre. Methods are outlined in the Ministry's publication 1976 Guide to Chemical Weed Control. To check your work, sprayer calibration bottles are available at the Elmvalle Agricultural office for \$1.00.

On May 19th there will be an open house and

private treaty sale of beef bulls at the Arkell Research Station — South of Guelph.

On May 22, the Annual Sheep Production Sale will be held at the Beamsville Fair Grounds.

On May 27th, there will be a Boar Sale at the R.O.P. Test Station, New Hamburg starting at 7:30.

4-H clubs enroll steers

by Robert A. Humphries
Associate Agricultural Representative
North Simcoe
Elmvalle
4-H News

Twenty five (25) North Simcoe 4H Beef Club members have enrolled market steers in this year's Queen's Guineas Competition. The calves must gain at least 2.1 lbs. per day over the feeding period May 15th to October 15th, as well as meet other standards.

The 4H Inter-Club Sports Day has been scheduled for Sunday, June 27th at the Huronia Centennial Elementary School grounds in Elmvalle. Once again, there will be trophies awarded to the overall champion club and the softball champions.

The annual 4H Judging Competition will be held on Wednesday, July 21st at the Elmvalle Fair Grounds. There will be six classes this year; beef, dairy, swine, sheep, crops, and farm safety.

4H Agricultural Clubs in North Simcoe are well underway with their summer programs. Enrolment figures have been compiled and the following is a breakdown of membership in the individual clubs:

- Coldwater and District 4H Calf Club 9 members;
- Vasey and District 4H Calf Club 15 members;
- Orillia 4H Calf Club 14 members;
- Minesing 4H Calf Club 17 members;
- Oro 4H Dairy Club 22 members;
- Oro 4H Beef Club 13 members;
- Elmvalle 4H Dairy Club 31 members;
- Elmvalle 4H Beef Club 27 members;
- Elmvalle Senior 4H Tractor Club 9 members;
- Elmvalle Junior 4H Tractor Club 19 members;
- Georgian 4H Field Crops Club 7 members.

Total 4H enrolment for North Simcoe 183 members.

As 27 members are enrolled in more than one club, there are 156 individual 4H members involved in this year's 4H program.

Public Meeting
The Simcoe County Federation of Agriculture is sponsoring a public meeting on Tuesday, May

25th at the Consumers Gas Bldg., Ferris Lane, Barrie.

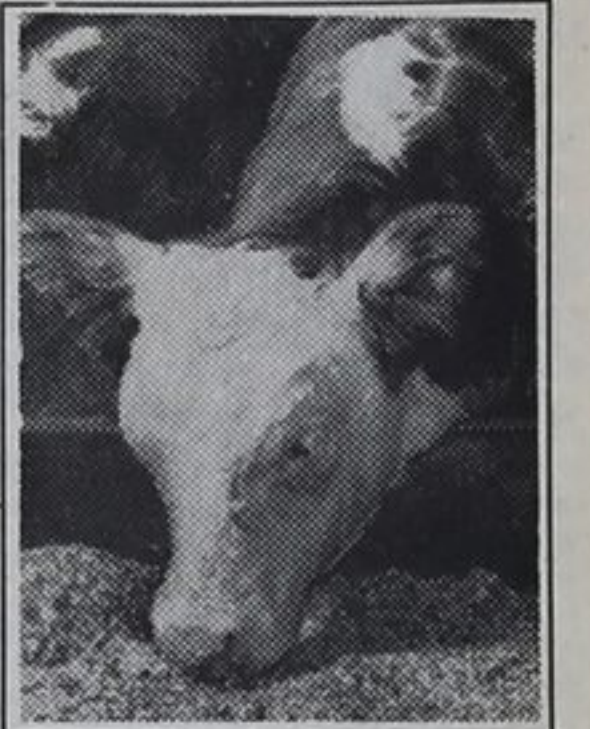
The guest speakers will be Gordon Hill, President

of the O.F.A. his topic will be Land Use and Farm Income Protection.

The meeting begins at 8 p.m.

HERBICIDES FOR GRAIN AND CORN — NOW IN STOCK —

See Us For...
Dairy Feeds
Bagged or Bulk
Mash or Pellets



J.S.FERGUSON FEEDS

'Your Shur Gain Dealer'

ELMVALE 322-2363

READY-MIX CONCRETE



FREE

BROCHURES

Since 1889

On the use of READY MIX CONCRETE

Check Boxes:

- How to Build a Patio
- How to Build a Driveway
- Design and Construction of Feedlots,
- Other: Explain: _____

Local Rep. to Call
MAIL TO:
The Sarjeant Co., Ltd.
P.O. Box 277,
BARRIE, Ontario L4M 4T2
Att. Mr. Bruce D. Ashe

Name _____
Street or R.R. _____
Town _____
Phone No. _____
Lot No. _____ Conc. No. _____

BROWN and BELL Farm Dairy Equipment

- Your authorized Delaval Dealer
- Round the barn pipelines . . . milk transfers . . . parlours
- Bulk tanks - s all supplies

726-0338 or 728-6766

RR 5 Holly Ont

Give your cow a treat instead of a treatment - try Delaval soft touch milking



Wildwood

THE ORIGINAL "MOLE HILL" SYSTEM OF MANURE HANDLING

ARE YOU CONCERNED ABOUT:

1. Air Pollution Control
2. Freeze Up of Conventional Type Barn Cleaner Chutes
3. The Need of Manure Stackers
4. The Need of Liquid Manure Holding Tanks and Equipment



- Key: A Hydraulic pump, B Hydraulic hoses, C Magnetic valve (scraper), D Magnetic valve (plunger)
- 1 Oil pipes, 2 Steel cylinder, 3 Plastic tube, 4 Hydraulic cylinder, 5 Manure chute, 6 Plunger, 7 Non-return valve

- 7 years of research and experience
- Will work equally well with manure containing no bedding, or manure containing long straw, wood shavings or saw dust.
- A crest forms on the surface of the "Mole Hill" storage pile which reduces odour, and fly problems.
- Urine and plant food is retained inside the pile. At least 1/2 of the nitrogen and 2/3 of the potassium are found in the urine.
- Unlimited manure storage at low cost.
- Manure storage area can be located in any direction up to 350 feet from the hydraulic pump.
- "Mole Hill" system can readily be modified to fit any peculiar style of livestock operation — dairy, beef, swine and poultry.

FILL IN COUPON FOR INFORMATION OR PHONE

Name _____
Address _____
Telephone _____ County _____

- Type of Farm _____ Student _____
- Alternators
 - Bedding keepers
 - Bossie cow trainers
 - Molehill
 - Feed carts
 - Liquid manure tanks
 - Liquid manure pumps
 - Fly control units

Craig Farm Services
1(705)428-2108
RR.4 Stayner

CRAIG FARM SERVICES

276 Main St. 428-2108
(Opp. T.D. Bank) Open 6 days a week
8 a.m. till 5 p.m. Fri. evenings till 9 p.m. ★ STAYNER ★



SUMMER SAVINGS SPECTACULAR

We're starting our summer celebration right now — with special prices on many new MF units.

LOOK AT OUR BIG SAVINGS:

- MF 230 Tractor SAVE \$400.00
- MF 235 Tractor SAVE \$400.00
- MF 255 Tractor SAVE \$400.00
- MF 265 Tractor SAVE \$400.00
- MF 275 Tractor SAVE \$400.00
- MF 11 Wheel Loader SAVE \$1000.00
- MF 200 Crawler Dozer SAVE \$600.00
- MF 40 Forklift SAVE \$600.00
- MF 50A Backhoe Loader SAVE \$1000.00

Come in soon and check out all the savings during this special sale!

Robert Wood Sales & Service Ltd.

PARTS — SERVICE — WELDING
Phone 534-7371,
P.O. Box 39,
Port McNicoll, Ontario

AUTHORIZED MASSEY FERGUSON DEALER



Snapper cleans up

• Optional 6-bushel grass catcher vacuums your lawn as you mow. • Grass catcher is mounted behind the mower for total maneuverability. • With proper attachments, Snapper can solve many yard care problems with ease. • Free demonstration on your own lawn.



SNAPPER
All Snapper mowers meet A.S.I. safety specifications

Martin's Equipment Centre

33 MAIN ST. PENETANGUSHENE 549-7203