

The biggest and best yet but . . .

. . . was it legal?

# Parading in Penetanguishene's centennial

Saturday's centennial parade was one of the biggest and best in Penetanguishene ever, but was it legal?

At the last town council meeting, five days before the start of the parade, Reeve Lionel Dion frankly told the members of town council that the town had no legal right to block off Main Street because the street is part of Highway 27 and as such falls under the jurisdiction of the province. "I think we all are aware we might be in trouble," Dion warned the councillors, if they voted to block off Main Street for the purpose of a parade. What he was saying was that council had a right to block off a town street for a parade but not a provincial highway. In at least one other municipality the Ontario Provincial Police came along, and for that very reason, opened a highway which had been closed by a local police force, Dion said.

Despite Dion's warning Penetanguishene's town council unanimously voted to hold the parade on Main Street because as town clerk Yvon Gagne put it, "Your damned if you do, and damned if you don't."

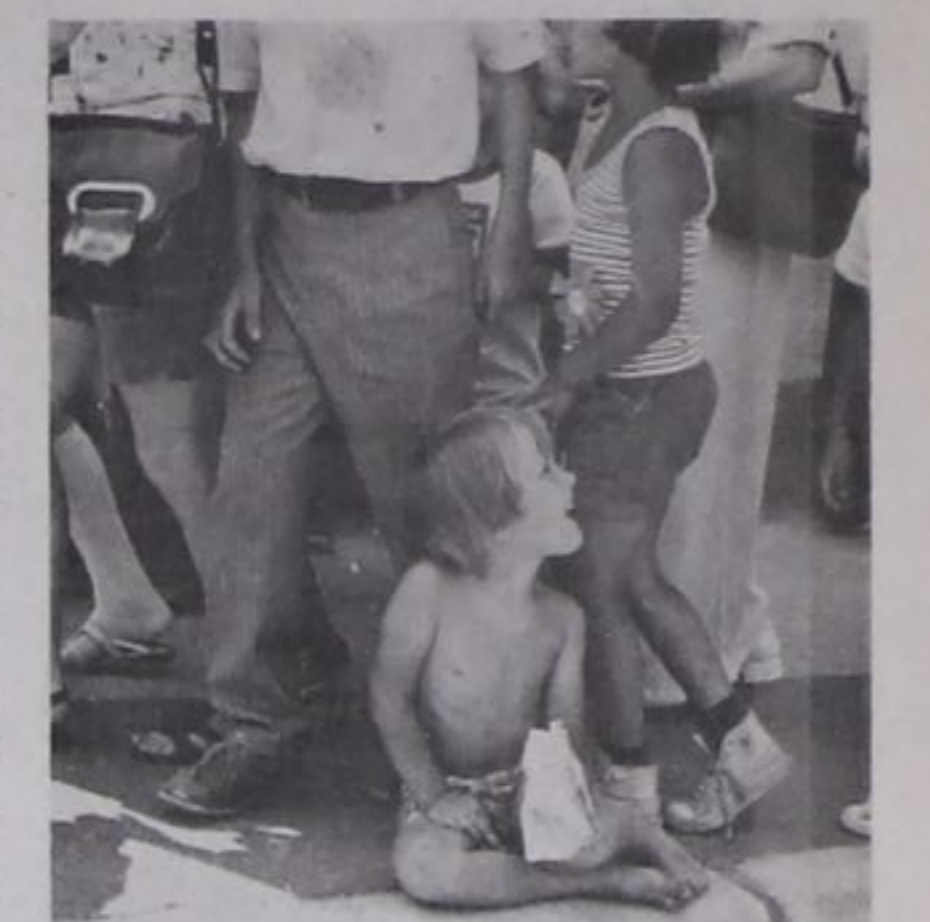
Gagne told the members of council that it could take up to four months to get the necessary provincial bylaw to legally block off Main Street for the parade and for that, there just wasn't enough time.

Now, from statements made by a town official on Monday following the parade, it appears that Penetanguishene's town council may not have overstepped its bounds in authorizing the Main Street parade.

A town official informed this newspaper that since the resolution authorizing the parade only allowed for erecting no parking signs on Main

Street and did not say anything about blocking the street to traffic - the parade would appear to have been legal. "We didn't close the road, this is just the sides of the road not the middle," the source at the town office said. Basically the town official argued there is a difference between blocking a road for a parade and erecting no parking signs for a parade. Only the province has the power to block off a road but the town may erect parking signs alongsides any road within its boundaries.

So it appears Penetanguishene's recent parade was perfectly legal despite the earlier misgivings expressed by Reeve Lionel Dion. Besides even if it wasn't, our local member of parliament was in the parade and he didn't seem to find anything the matter with it.



Who's blocking the road?



# BEAVER

**DO-IT-YOURSELF AND SAVE**

5 1/2 Garden Screen <b>291</b> Lin. Ft.	4 Texan Rail <b>152</b> Lin. Ft.
3 Ranch Rail <b>72 1/2</b> Lin. Ft.	4 Basketweave <b>218</b> Lin. Ft.
4 Cross Rail <b>122</b> Lin. Ft.	

All styles available in economical spruce.

## Western Cedar Fencing

These are just a few of the many attractive styles available from Beaver. Build with confidence using easy-to-follow instructions and top quality Cedar Lumber.

### D4S Cedar Lumber

1"x6"x8-16'	<b>20¢</b> Lin. Ft.	2"x6"x8-16'	<b>33¢</b> Lin. Ft.
2"x4"x8-16'	<b>17¢</b> Lin. Ft.	4"x4"x8-16'	<b>43¢</b> Lin. Ft.



### Panel of the week!

4 x 8 Panels  
Prefinished Mis-Match  
Mahogany

**\$3.99**

### 70" Cedar Picnic Table

Fully pre-cut and ready to assemble. Nails included!

**34<sup>97</sup>**

### Patio Decks

You'll be surprised at how economically you can build a beautiful cedar patio deck with quality lumber and construction plans from Beaver.

### Patio Covers

Top quality lumber, colourful corrugated fibreglass panels plus all components are put together in one economical package.

### Fibreglass Awnings

48" wide curvetop awning with scrolled aluminum side trim. Green or White.

**31<sup>99</sup>**

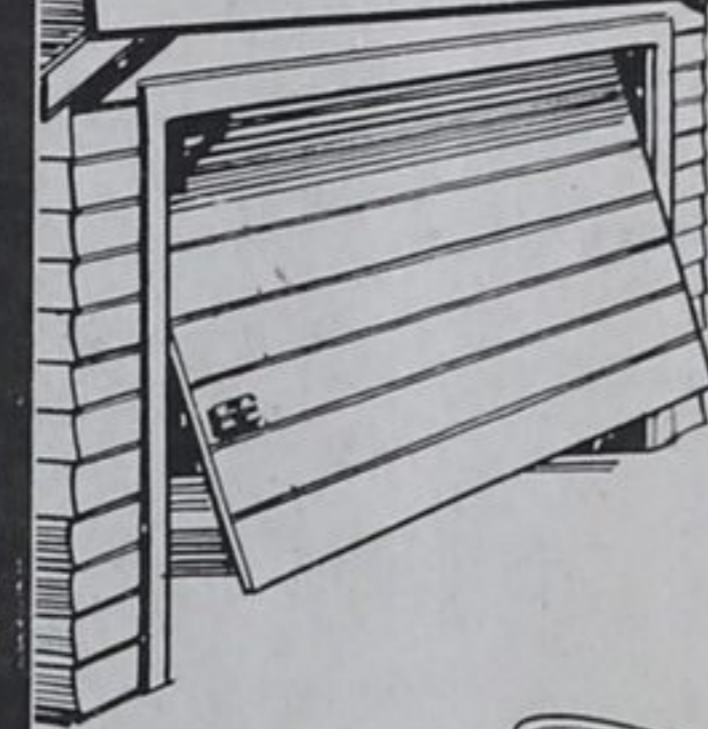
Other sizes available.

### Fibreglass Panels

Nominal 4-oz. fibreglass. Ideal for use in fences, screens, patio covers, etc.

**4<sup>99</sup> 6<sup>19</sup>**

26" x 8' 26" x 10' While stocks last!



### 8'x7' Garage Door

One-piece steel garage door equipped with high quality, trouble-free hardware. Long-life nylon rollers for finger-tip operation.

**99<sup>97</sup>**



### Driveway Sealer

Beaver's own brand asphalt-base sealer. Adds new life to black-top surfaces.

**6<sup>88</sup>**

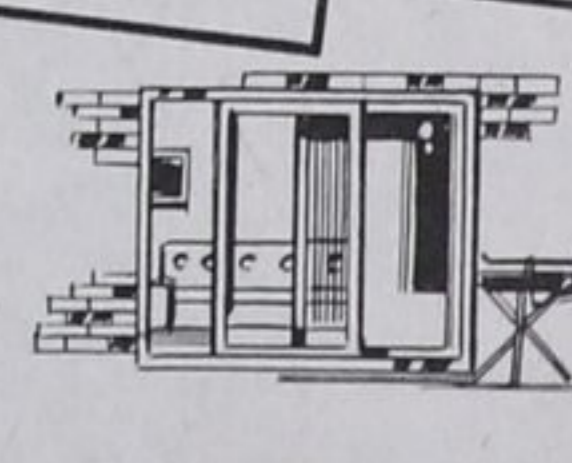
5-gal Pail  
Sealer Applicator ..... **1<sup>99</sup>**



### Wrought Iron Railing

Easy to assemble with rails that adjust to any pitch and columns with height adjustment.

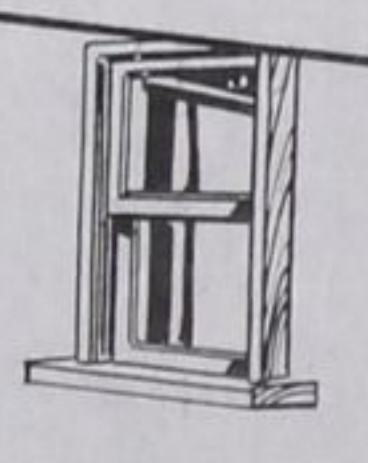
4' Section **9<sup>89</sup>**  
6' Section **14<sup>89</sup>**



### Patio Doors

Our entire stock of wood patio doors has been reduced by

**15% OFF!**



### Wood Windows

When you buy 5 or more windows from our regular stock, you are entitled to

**25% OFF!**



### Colorlok Lap Siding

Masonite X 50 siding 12" wide in bundles of 64 sq. ft.

**32<sup>97</sup>** Bundle

### Vented Soffit

Aluminum prefinished in white 12-16" x 12-6" pieces to the carton

**9<sup>99</sup>** Each

### 10' Fascia Panels

Aluminum prefinished in white 30-10 pieces per carton

**3<sup>99</sup> 4<sup>69</sup>** Each



### Cedar Exterior Door

An attractive, economical door for side or rear entrances.

**40<sup>99</sup>**



### Concrete Patio Stones

18 x 18	\$1.49
24 x 24	\$2.29
24 x 30	\$2.49



### Creosote Preservative

Helps prevent rot and mildew on wood surfaces.

**3<sup>69</sup>** Gal.



### Beaver Wood Stain

Ideal for use on fences. Redwood, Cedar and Walnut.

**5<sup>77</sup>** Gal.



### 5' Aluminum Stepladder

Lightweight, easy-to-handle. CSA approved safety features.

**13<sup>88</sup>**



**BEAVER**  
HOME CENTRE

159 Fourth St. MIDLAND 526-5416

STORE HOURS: Mon., Tues., Wed., Thurs., Fri. - 8:00 a.m. to 5:00 p.m. - Saturday 8:00 a.m. till 4:00 p.m.

