

Late night noise blamed

# Tennis racket causes cries of woe on Maria St

The annual cries of woe are being heard from at least one person living on Maria Street near the tennis courts.

At last Wednesday's meeting of the Arena, Parks and Recreation Board the problem of noise caused by bouncing balls off the practice board late at night reared its ugly head.

Ron Bellisle reported

that someone on Maria Street had approached him concerning the problem.

After a period of discussion it was decided to send a letter to the tennis club asking members to police their courts to make sure that the late night noise problem is eliminated.

If that doesn't solve the problem of complaints, a

questionnaire may be sent out to the residents of Maria Street to try and find out how bad the situation really is, and what can be done about it.

Tennis club rules require that the lights over the practice board area be turned off at 8:30 p.m. Lights for the courts must be shut off at midnight.

Learn safe riding habits

# 50 ride in bike rodeo

Safe riding paid off for a 10-year-old girl and a 13-year-old boy at Sunday's second annual bicycle rodeo at the Community Centre.

Both Colores Desjardins and Jim Lamont won 10 speed bicycles in the competition which is run by the Penetanguishene

Police to promoted sportsmanship, the rules of the road and safe riding.

Nine-year-old Janette Gravelle and seven-year-old Wayne Jehle each won three speed bicycles for excellence in safe riding.

An estimated 50 children participated in

the event which was organized by constables: Tom Marchand, Tom Tiffin, Don Wescott and Art Lizotte. Special thanks also go to Patricia Steele, Frances St. Amant, Mary Rogers and Tim Vaillancourt for their help in making the rodeo a success.



Cooling off at the Waterfront Park

Getting wet voluntarily by romping around in the water or through other involuntary means was the order of the day last Sunday as hot temperatures hit all of Simcoe County. Here, Penetanguishene's waterfront

park serves as a good place to cool off for a group of youngsters and if someone splashed you, well...who cares...the cool water felt great.

Staff photo

# Town hires two students

The Penetanguishene municipal office staff has been boosted by the addition of two university student workers. The two; 21-year-old Ken Cousineau and 23-year-old Steve Fournier have been hired to assist the municipal staff during the summer.

for its government grants under the Neighbourhood Improvement Program and the Residential Rehabilitation Assistance Program will comprise the bulk of Steve Fournier's work.

Cousineau's \$125 per week salary is paid for through a provincial grant. The town pays the rest. All of Fournier's \$125 per week salary is paid for by a 75 per cent provincial grant and a 25 per cent federal grant.

Cousineau is completing a parking study which will compare the existing parking lot space in the town with what is needed and come up with recommendations for additional parking sites. His report is expected to be presented to the town planning board on June 16.

Assisting the town in the site selection process

## Leitz Canada Announces New Board and Officers



W. Kluck H. Siegfried

During the recent Annual Shareholders' Meeting new officers were appointed, and a new Board elected.

The position of Chairman of the Board was assumed by Mr. Horst Siegfried, thus relieving Dr. Ernst Leitz who, for health reasons, has relinquished the larger part of his company responsibilities.

New President and General Manager will be Mr. Walter G. Kluck.

The new Board of Directors will consist of 7 members, 4 of whom are Canadian citizens, and they are:

- Messrs. W. R. Carveth, Toronto,
- W. G. Kluck, Midland,
- W. Mandler, Midland,
- D. H. Peden, Ottawa.

Overseas directors are:

- Dr. K. Kuehn-Leitz and H. Siegfried, Wetzlar,
- Dr. A. Semadeni, Heerbrugg, Switzerland.

In an announcement to the Leitz employees the new Chairman pointed out that "the company has, with the impending extension of its production program, an excellent opportunity to advance a step further. The investments presently in the planning stage and already being applied are proof of this."

He also pointed out, however, that the company still faces great challenges. The present Canadian rate of inflation lies considerably higher than the corresponding rates in Germany and certain other markets where our products have to compete. He voiced his confidence, however, in the staff's ability to overcome these difficulties.

Midland, May 23, 1975

# Plans call for up to \$1,000,000 in arena renovations

Plans calling for up to \$100,000 worth of renovations to the Memorial Arena were presented at last Wednesday's meeting of the Arena, Parks, and Recreation Board.

All the proposed renovations which are slated for the western or front end of the arena only, received approval in principal (with a few minor changes) from the board.

Basically the plans call for an 18 foot extension outwards from the existing front of the building and tearing down and restructuring facilities in the interior. An additional \$6,000 has

been budgeted for plexi glass which will be erected along the eastern and western ends of the arena replacing the existing wire mesh. The preliminary sketches, by Ken

McGuire of MM Dillon Company of London, show a doubling of the size of the four existing dressing rooms, the creation of a referees' room, a large size equipment room, a new managers office, a large front entrance lobby along with stairs running from the lobby to the arena lounge.

Charlebois a member of the board.

The snack bar and the front lobby would be included in the two thirds of the western end which will be heated.

Options in the McGuire sketches allow for the extension of the existing arena lobby over the enclosed western end of the rink up to the edge of proposed plexiglass. Again, if desirable and practical the arena lounge could be extended over the 18 foot extension at the front of the building.

Now that the arena, parks and recreation board has approved the bulk of the plans in principle, the architect may proceed with preparing a written report and detailed drawings.

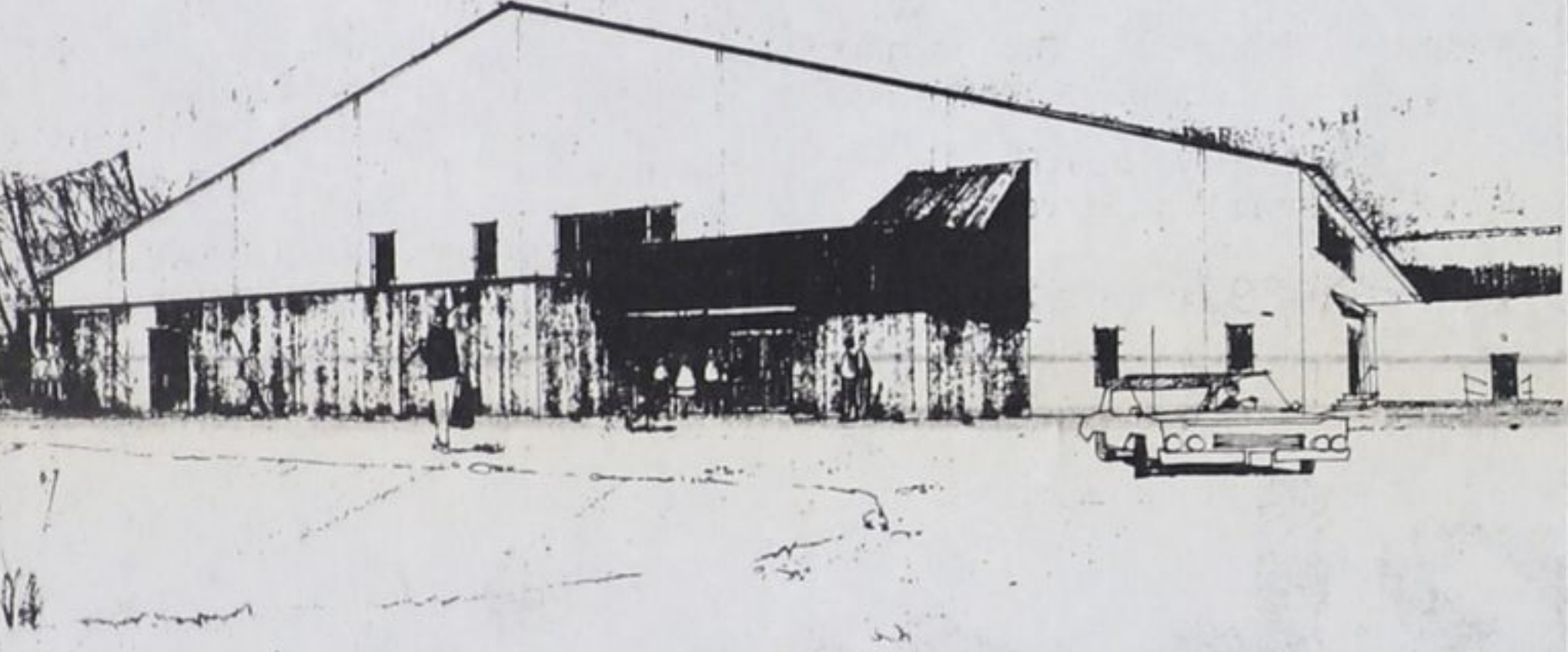
The cost of the preliminary report which was presented at last Wednesday's meeting

was \$1,500 according to Charlebois. The final written report, which the arena, parks, and recreation board's approval in principle provides the go ahead for, will cost a further \$2,500. According to Charlebois this report will contain the detailed architect's plans along with specifications for tendering purposes.

As soon as the final report is received, a presentation will be made to the town council seeking its approval. Council's approval is needed before the plans can become a reality.

An interesting and comforting feature (remember those cold winter nights) is the enclosure of two thirds of the western end of the rink. This would cover the area between the rink boards and plexiglass to the dressing room walls where fans often gather to watch games. This corridor would be heated. The other one third of the western end could be enclosed if the board members decide it was desirable and practical but this area would not be heated according to Don

## Penetanguishene Memorial Arena



Sketch drawing of proposed renovations

The \$100,000 figure for renovations could be reduced if the arena, parks and recreation board, or the town council, decide that certain parts of the plan, for example the extension of the arena lounge, are not practical or feasible.

If the plans for renovating the arena are approved all or in part by the town council, the earliest possible date for completion of the project would be the 76-77 hockey season according to Don Charlebois.

### How to Decorate! Start with The Color Wheel & House of Wallpaper

Make your dreams and ideas of a beautiful room a reality by dropping in to our house of Wallpaper.

Here you will see how to achieve a complete new room from our collection of beautiful wall coverings by Crown and Sunworthy.

For Advice - It's Free

### The Color Wheel & House of Wallpaper

For Today's Elegance

157 Main St., Penetang, Corner of Edward & Main, Phone 549-8233. Hours Mon. to Thurs. 9:30 to 5:00 Friday 9:30 to 9 p.m. Sat. 9:30 to 5 p.m. Closed Wednesdays.

### Town of Penetanguishene



### NOTICE

#### TO PROPERTY OWNERS TO DESTROY WEEDS

Notice is hereby given to all persons in possession of land in accordance with The Weed Control Act 1972; Section 4, 14 and 20 that unless noxious weeds growing on their lands within the Municipality of Penetanguishene, Ontario, are destroyed by date of June 20th, 1975, and throughout the season, the Municipality may enter upon the said lands and have the weeds destroyed, charging the costs against the land in taxes, as set out in the Act. The co-operation of all citizens is earnestly solicited.

Weed Inspector F.W. Linn Penetanguishene, Ont.

### GUNTHER'S WATCH CENTRE

EXPERT WATCH REPAIRS FAST SERVICE

526-3933

509 Dominion Ave. Midland

### EACH DAY CAN

#### BE A NEW BEGINNING

With certain few exceptions your body has the means to restore itself. If your muscles are weak, you can exercise to increase their strength. If a bone is broken, it can be healed.

If your body does not serve you well, you can assist it to do a better job. Whatever the problem, the odds are that your physician can help you correct it. Depend less on self-treatments and more on a physician's guidance. You will save much sickness-time.

"A great many people entrust us with their prescriptions, health needs and other pharmacy products. We consider this trust a privilege and a duty. May we be your personal family pharmacy?"

"Your Own Community Pharmacies"

Open Daily To 6 p.m. Including Wednesday Friday To 9 p.m. CLOSED SUNDAY

Open Daily To 9 p.m. Wednesday & Saturday To 6 p.m. Closed Sunday

WHITFIELD'S  
**Rexall**  
PHARMACY

Elmvalle  
322-1011

PHARMACEUTICAL CHEMIST

IRETON'S  
**IDA**  
PHARMACY

Penetang  
549-2555

### CARPET CRAFT Shoppe

BALM BEACH RD. JUST WEST OF 27.

SAYS

10% to 15% OFF ALL HOME DECORATING MATERIALS

FREE ESTIMATES EXPERT INSTALLATIONS GUARANTEED BROWSE THROUGH "CANADIAN CRAFT DEPT." FOR COMPLETE SELECTION OF COLOURFUL ITEMS.

UP to 50% OFF on REMNANTS & ROLL ENDS - See our CELENESE. ARMSTRONG. DOMCOR INDOOR-OUTDOOR DISPLAY

PHONE 526-9624

### SAVE

as you BUY

### Home Gifts

You'll be amazed at the scope and variety of gifts for the home we've assembled for your selection. Sensibly priced, too, in the tradition we have proudly upheld for many years. Drop in and browse. We'll welcome the opportunity to serve you.

### FOLEY'S

Furniture & Appliances Hwy. 26 COLLINGWOOD



### NOTICE To Property Owners Destroy Weeds

Notice is hereby given to all Persons in Possession of land, in accordance with the Weed Control Act 1972, Section 4, 14 and 20 that unless noxious weeds growing on their lands within the Municipality of the Village of Elmvalle are destroyed by date of June 20, 1975 and throughout the season, the municipality may enter upon the said lands and have the weeds destroyed, charging the costs against the land in taxes as set out in the Act. The co-operation of all citizens is earnestly solicited.

Weed Inspector Hedley Lucock, Village of Elmvalle

# Debentures

# 9 3/4%

4 - 5 year terms.

For amounts of \$10,000 or more 10% for 4 - 5 year term.



the municipal savings & loan corporation

221 King St. Midland 526-9364

GEORGIAN MALL BARRIE 726-0340

HEAD OFFICE 88 DUNLOP ST. EAST BARRIE 726-7200

105 MUSKOKA RD. N. GRAVENHURST 687-2212

MEMBER - CANADA DEPOSIT INSURANCE CORPORATION