

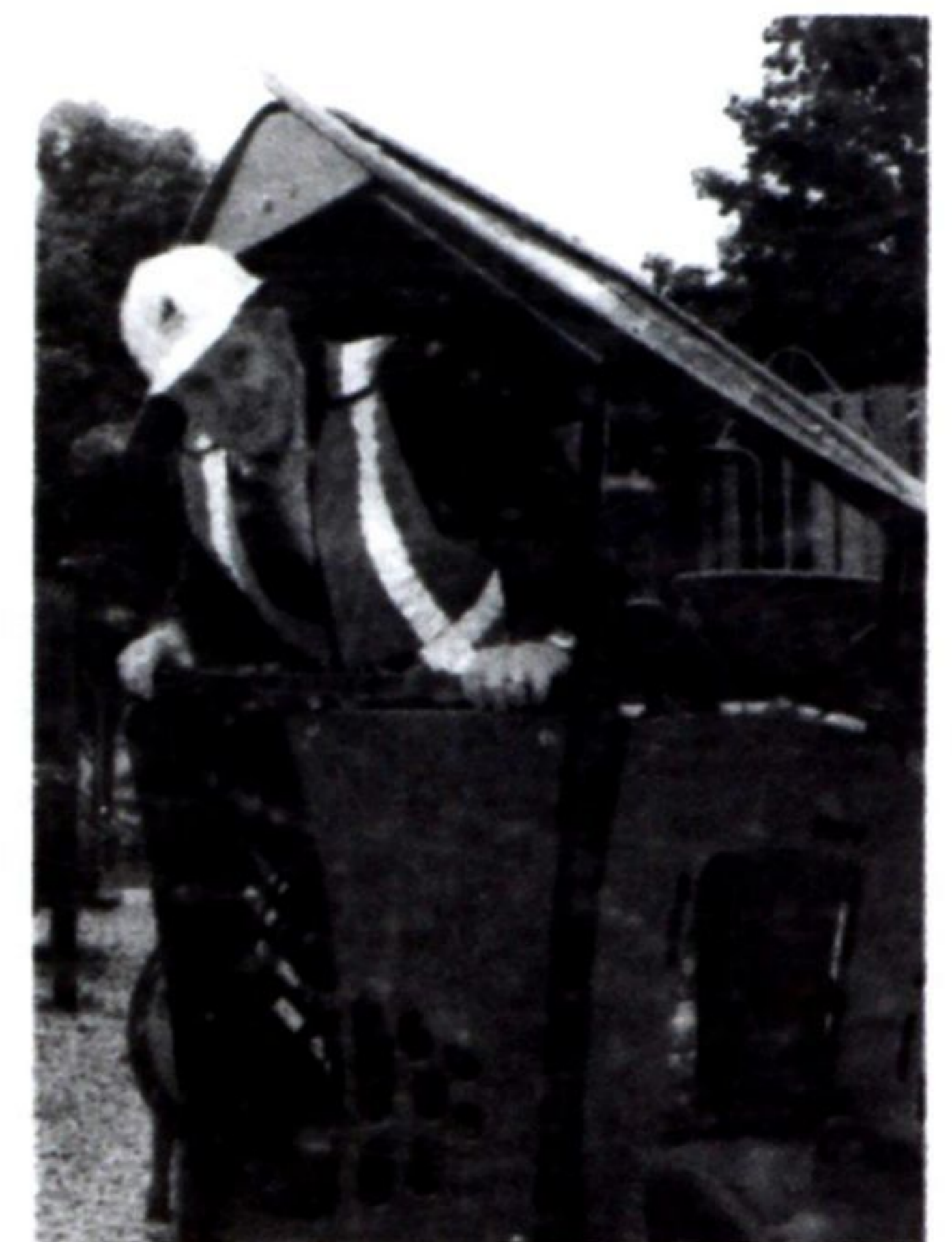
# Victoria Park upgrades unveiled

Earlier this year, Milton Council approved a \$600,000-plus contract to give a century-old downtown park a facelift. Victoria Park, located beside Town Hall on Mary Street, has received a variety of enhancements, including a new playground, cenotaph plaza, walkway improvements and tree planting. The outdoor space is slated to re-open to the public by mid-October. Here's a sneak peek of what the new park has to offer.



Clockwise from above, Mayor Gord Krantz and Milton Legion president Bob Williams try out one of the new picnic tables in Victoria Park. The tables are scattered under trees throughout the park and a new seating area has been designed around the play area, fountain and gazebo, which is more central to the park. Williams checks out the recently-repaired cenotaph that now sits in an expanded, accessible gathering space in Victoria Park. Earlier this year, the Town obtained a grant from Veterans Affairs Canada to make improvements to the monument and surrounding area. Krantz tests out the new playground, which features an updated design and earthy colours to complement the quiet nature of the park. A unique metal fence has been incorporated to separate the new paved plaza around the cenotaph from the street. The name Victoria Park has been embedded into the ironwork of the fence in keeping with the heritage look and feel of the park. For more photos and detailed description of park features, visit [www.insidehalton.com](http://www.insidehalton.com).

Melanie Hennessey / Canadian Champion



The Honda  
**2016**  
MODEL  
**CLEAROUT**

**TIME IS ALMOST UP!**

2016 **CIVIC LX** FROM MODEL FC2E5GE  
**\$57 @ 2.99%** APR  
WEEKLY LEASE FOR 60 MONTHS<sup>1</sup>.  
\$0 DOWN PAYMENT/OAC \$0 SECURITY DEPOSIT  
PLUS GET A **\$750**<sup>2</sup>  
LEASE & FINANCE BONUS ON ALL 2016 CIVIC MODELS



2016 **HR-V LX** MODEL RU5G3GEX  
**NEW LOWER PAYMENT FROM**  
**\$65 @ 3.99%** APR  
WEEKLY LEASE FOR 60 MONTHS<sup>1</sup>.  
\$0 DOWN PAYMENT/OAC \$0 SECURITY DEPOSIT  
PLUS GET A **\$500**<sup>2</sup> LEASE & FINANCE BONUS ON ALL 2016 HR-V MODELS

2016 **CR-V LX** FROM MODEL RM3H3GE1  
**\$72 @ 1.99%** APR  
WEEKLY LEASE FOR 60 MONTHS<sup>1</sup>.  
\$0 DOWN PAYMENT/OAC \$0 SECURITY DEPOSIT  
PLUS GET A **\$1,500**<sup>2</sup> BONUS ON ALL 2016 CR-V MODELS.



**ONCE THEY'RE GONE, THEY'RE GONE!**

LEASE PAYMENTS INCLUDE FREIGHT & PDI. EXCLUDES LICENCE AND HST. DEALER TRADE MAY BE NECESSARY.

[HondaOntario.com](http://HondaOntario.com)  
Ontario Honda Dealers



Limited time lease offers available through Honda Financial Services Inc. (HFS), to qualified retail customers on approved credit. Weekly payments include freight and PDI (ranges from \$1,595 to \$1,725 depending on model), EHF tires & filters (\$18.75), A/C charge (\$100), and OMVIC fee (\$10). Taxes, licence, insurance and registration are extra. <sup>1</sup>Representative weekly lease example: 2016 Civic LX Sedan 6MT (Model FC2E5GE) // 2016 HR-V LX 2WD (Model RU5G3GEX) // 2016 CR-V LX 2WD (Model RM3H3GE1) on a 60-month term with 260 weekly payments at 2.99% // 3.99% // 1.99% lease APR. Weekly payment is \$56.69 // \$64.55 // \$71.63 with \$0 down or equivalent trade-in and \$520 // \$780 // \$655 total lease incentive included. Down payments, \$0 security deposit and first weekly payments due at lease inception. Total lease obligation is \$14,739.51 // \$16,783.32 // \$18,623.52. 120,000 kilometre allowance, charge of \$0.12/km for excess kilometres. PPSA lien registration fee of \$45.93 and lien registering agent's fee of \$5.65, due at time of delivery are not included. <sup>2</sup>\$750 Honda Financial Services Inc. (HFS) lease & finance dollars are deducted from the negotiated price after taxes. Lease & finance dollars apply to retail customer lease or finance agreements through HFS for 2016 Civic models concluded between October 1st, 2016 and October 31st, 2016 at participating Ontario Honda Dealers. <sup>3</sup>\$1,500 Bonus offer will be deducted from the negotiated price after taxes, can be combined with advertised lease and finance rates, and applies to retail customer agreements for new 2016 Honda CR-V models concluded between October 1st, 2016 and October 31st, 2016 at participating Ontario Honda Dealers. <sup>4</sup>\$500 Honda Financial Services Inc. (HFS) lease & finance dollars are deducted from the negotiated price after taxes. Lease & finance dollars apply to retail customer lease or finance agreements through HFS for 2016 HR-V models concluded between October 1st, 2016 and October 31st, 2016 at participating Ontario Honda Dealers. For all offers: licence, insurance, PPSA, other taxes (including HST) and excess wear and tear are extra. Taxes payable on full amount of purchase price. Offers only valid for Ontario residents at participating Ontario Honda Dealers. Dealer may lease for less. Dealer trade may be necessary. Colour availability may vary by dealer. Vehicles and accessories are for illustration purposes only. Offers, prices and features subject to change without notice. See your Ontario Honda Dealer or visit [HondaOntario.com](http://HondaOntario.com) for full details.

**LASTMAN'S**  
**BAD BOY**  
SUPERSTORE  
BIGGER, BETTER,  
**ALL NEW WEBSITE LAUNCH!**  
**BADBOY.CA**  
SUN. OCT. 16 MIDNIGHT!

**48" SAMSUNG SMART TV**

**SAMSUNG SAVE 90%**



SAVE \$120  
**\$578**

FIRST 15 CUSTOMERS ONLINE!

FIRST 10 CUSTOMERS IN-STORE!

#94093