

Dateline

Dateline is a free listing for local non-profit community groups to promote their events for the coming week.

Notices should be emailed to jslack@miltoncanadianchampion.com. The deadline is noon on the Monday of the week before the week of the event. The listing runs Sunday to Saturday.

Sunday February 14

The Milton Seniors' Activity Centre, 500 Childs Dr., holds **Pickleball** at the Milton Leisure Centre, 1100 Main St. E., from 6 to 8 p.m. The cost is \$3.75 for those aged 65 years and over and \$5 for those aged 18 to 64 years. For more information, call (905) 878-7946.

Monday February 15

The **Milton Historical Society** is offering children's activities from 10 a.m. until 2 p.m. The fun includes games, crafts and displays. Drop by with your children, Waldie's Blacksmith Shop, 16 James St.

The **Milton Rotary Club** meets at the Community Living North Halton board room, 917 Nipissing Rd., from 6:30 to 8 p.m. Please arrive at 6:15 p.m. For more information, call (905) 878-4094.

Monday Feb. 15 - Tuesday Feb. 16

The Deck youth drop-in centre, 900 Nipissing Rd., is open from 3 to 6 p.m. for all ages. Visit www.yfcmilton.com.

Tuesday February 16

Family Church at Grace Anglican Church, 317 Main Street Milton from 5:45 to 6:45 p.m. Geared to families with children 10 and under, all welcome. Come pray, sing and have a meal with us. All done in an hour.

Adults, do you need to upgrade your skills in reading, writing, math or workplace computers? Need help preparing for high school credit, GED or college entrance? The Adult Learning Centre is holding an **information session** for their programs in Milton, at 10 a.m., at 550 Ontario St., suite 208. Pre-registration required. For more information or to register for any of the programs, call (905)

873-2200 or visit at Inhadultlearning.ca and on Facebook.

Literacy North Halton is recruiting volunteer tutors to work with adult learners. Do you have three hours/week to work with an adult who needs to upgrade reading, writing, math or basic computer skills? Call (905) 873-2200 to register for upcoming orientation session in Milton. For more, visit www.inhadultlearning.ca or on Facebook.

The **Milton Toastmasters** meets from 7:30 to 9:30 p.m. at the Royal Canadian Legion, 21 Charles St., in the upper hall. Please arrive at 7:15 p.m. Everyone's welcome. For more information, call (416) 992-0254 or visit www.miltontostmasters.org.

Indoor Lawn Bowling is played from 1 to 3 p.m. at the Milton Soccer Centre, 821 Main St. E. Pay as you go for \$7. Instructions and bowls are provided for novices.

Wednesday February 17

Milton Christian Ladies Coffee Hour invites you to join us at 9:30 to 11 a.m. at Milton Gospel Hall, 306 Ontario St. N., (one block south of Steeles Ave.) Special feature: **Spring Blooms and Blossoms** with Sarah Pell from Crawford's Garden Centre." Guest Speaker: Marilyn McMullen. For information and transportation call Kathy 905-878-5019.

St. David's Presbyterian Church (Guelph Line at Hwy. 401) in Campbellville holds **euchre and bid euchre** at 1 p.m. The cost is \$2 per person. Everyone is welcome.

The Community Withdrawal Management Services Drop-In Group meets at the ADAPT office, 245 Commercial St., Unit B1, from 6:30 to 8 p.m. The group supports people in the community looking to examine their substance abuse. Topics include healthy living skills, budgeting, self esteem and healthy relationships. For more information or to reserve a seat, call (905) 827-5320.

The **Royal Canadian Sea Cadet Corps Chaudiere**, a youth program for boys and girls aged 12 to 18 years, meets at 6:15 p.m. at the Milton Fair Grounds, Building 3, on Rob-

ert Street. For more information, call (905) 875-1400 and leave a message.

The Milton Seniors' Activity Centre, 500 Childs Dr., holds **Snooker League** and **Craft Club** from 9 a.m. to noon, **Contract Bridge** from 9:15 to 11:30 a.m., **Song Spinners Club** from 9:30 to 11:30 a.m. Song Spinners Membership (September to June 2016): \$135, **Billiards** from noon to 9 p.m., Weekly Lunch Counter is open at noon and features the meal deal: \$8 for members and \$8.80 for non-members. Visit the reception desk or call the Centre to reserve your spot by Monday of this week (905) 875-1681. **Canasta** from 1 to 3:30 p.m., and **Bingo** from 7 to 9 p.m. Cost is \$2 for members and \$4.25 for non-members.

The **Weekly Lunch Counter** is open at Noon and features the meal deal: \$8 for members and \$8.80 for non-members. Visit the Reception Desk or call the Centre to reserve your spot by Monday of this week (905) 875-1681.

Thursday February 18

Indoor Lawn Bowling is played from 1 to 3 p.m. at the Milton Soccer Centre, 821 Main St. E. Pay as you go for \$7. Instructions and bowls are provided for novices.

The Milton Seniors' Activity Centre, 500 Childs Dr., **Snooker League** from 9 a.m. to noon, **Acoustic Guitar** from 9 to 11:30 a.m., **Walking Club**, 9:30 to noon, **Line dancing**, from 10 to 11:30 a.m., **Billiards** from noon to 9 p.m., **Jam Session**: Classic Rock, Country and Jazz Drop-in from 12:30 to 3 p.m., **bid euchre**, from 1:30 to 4 p.m., **Clogging** from 2 to 3 p.m. and **Table tennis** from 7 to 9 p.m. Each activity costs \$2 for members and \$4.25 for non-members. **Baking with Jan** is held from 10 a.m. to noon. Register in person at the front desk. Cost is \$5.86. For more information, call (905) 875-1681. **Older Adult Shiny** is held at the Milton Sports Centre from 11 to 11:50 a.m. Cost is \$6.75 for those aged 18 to 64 and \$5.75 for those aged 65 years and over. For more information call (905) 875-5393.

The **Milton Historical Society** is holding its

monthly meeting at Waldie's Blacksmith Shop, 16 James St. 'Remembering Milton Places, People and Events' through slides presented by Gloria Brown, Bruce Carlin and Marsha Waldie. Doors open at 7:30 p.m. Presentation begins at 8 p.m. Visit www.miltonhistoricalsociety.ca, email info@miltonhistoricalsociety.ca or call (905) 875-4756 for more information.

Dementia support group for family members, 1:30-3:30 p.m., Milton Superstore Cooking Room. Connect with others dealing with dementia in a relaxed atmosphere, share stories, ask questions. Call Acclaim Health Alzheimer Services at (905) 847-9559 for more information or to register.

Thursday Feb. 18 - Friday Feb. 19

The Deck youth drop-in centre, 900 Nipissing Rd., is open from 3 to 6 p.m. for all ages. Visit www.yfcmilton.com.

Friday February 19

At 7 p.m., **Movie Night** sponsored by Ebenezer United Church at Rev. Willy's home. Call 519-763-7707

Halton Business Partners meet at 11:30 a.m. to 1 p.m. at Ned Devine's to share referrals. If you are a local business owner looking for quality business referrals, please call Heidi Cherry (416) 580-7507 to reserve your seat.

The Milton Seniors' Activity Centre, 500 Childs Dr., holds **One-on-One Personal Computer Coaching** (by appointment only, sign up at the Reception Desk) from 1 to 2 p.m. or 2 to 3 p.m. Activity costs \$2 for members and \$4.25 for non-members. **Bid Euchre** takes place at the Nassagaweya Tennis Club and Community Hall from 7:30 to 10:30 p.m. The cost is \$3. For more information, call (905) 875-1681.

Saturday February 20

The Milton Seniors' Activity Centre, 500 Childs Dr., holds **Billiards** and **Table Tennis** from 1 to 3 p.m. Each activity costs \$2 for members and \$4.25 for non-members.

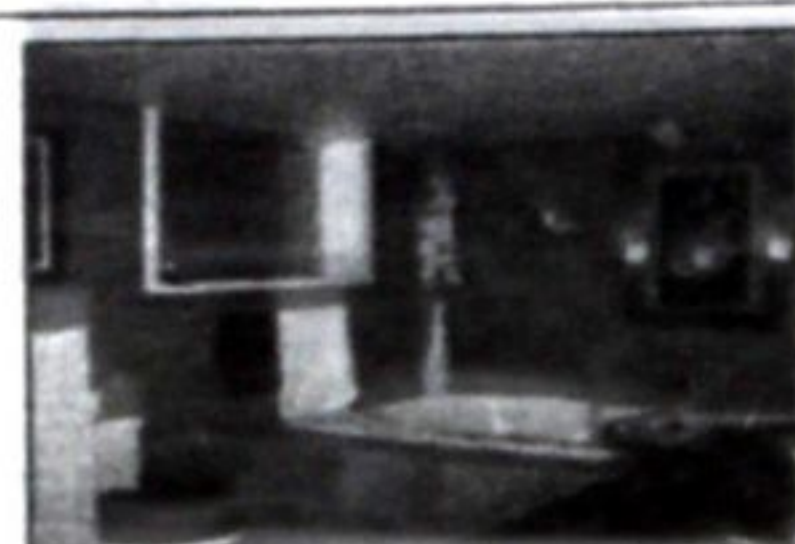
JANSZ INTERIORS

Time to spruce up your home.
We're proud to live and work in Milton.
We offer **Quality, Honesty & Value**. No job is too small.



- Bathrooms
- Decks
- Pergolas
- Custom Cabinetry
- Custom Niches
- Crown Molding
- Kitchens

- Media Rooms
- Home Office
- Hardwood Flooring
- Tiling
- Custom Basements
- Railing & Bannisters



For our complete Portfolio, please visit www.janszinteriors.com
Contact Stewart at 647-404-5067 today
Trust is one of the things we build well

RBC Dominion Securities Inc.

CONCERNED ABOUT MARKET VOLATILITY?

Don't leave your financial future to chance. For a free, no-obligation portfolio review, and to learn about strategies that can help reduce volatility and protect your investments, call Buddy today.

WILFRED (BUDDY) EDGE, CPA, CGA, CIM, MBA
Investment Advisor

905-875-0946 | buddy.edge@rbc.com

Professional wealth management guidance you can count on.



RBC Wealth Management
Dominion Securities

There's Wealth in Our Approach

RBC Dominion Securities Inc.* and Royal Bank of Canada are separate corporate entities which are affiliated. *Member Canadian Investor Protection Fund. RBC Dominion Securities Inc. is a member company of RBC Wealth Management, a business segment of Royal Bank of Canada. ©Registered trademarks of Royal Bank of Canada. Used under licence. © RBC Dominion Securities Inc. 2016. All rights reserved. 16-0000-00K-001