

Kim Scott*
Sales Representative
878-8101
kimscott@royallepage.ca • www.kimscott.ca

Director's PLATINUM Award
2014
AWARD OF EXCELLENCE

CAREFREE CONDO LIVING



Great location within walking distance to downtown and Mill Pond. Two bedroom unit on the 2nd floor with California shutters, ensuite laundry & double balconies with a southern exposure. Updated kitchen with pot drawers & pantry, separate dining room & spacious living room with balcony. Master has walk-in closet and 2 piece ensuite, 2nd good sized bedroom has walk-out to balcony. Move in ready! **\$259,900**

DRURY PARK



Popular Drury Park 3 bedroom bungalow with loft. Hardwood floors in living & dining room, gas fireplace, large deck & wrap around porch. Master with bow window has ensuite and walk in closet, second full bath plus powder, convenient main floor laundry and int gar entry. Partially finished basement. Roof '14. **\$489,000**

FOR LEASE



Lovely semi backing onto a pond has been freshly painted and awaits a new family. Spacious eat in kitchen, large walk-in closet in master, quick highway access. **\$1,600**



SHAWN KENNY
SALES REPRESENTATIVE

Your NEIGHBOURHOOD Realtor!

Direct: 905-864-5923

www.ShawnKenny.ca

shawn@shawnkenny.ca



IT'S A GREAT SELLERS MARKET!

NOW IS THE TIME IF YOU ARE THINKING OF SELLING!

CALL ME!



Your Window of Opportunity...

...is right around the corner!

Call a Milton Champion Realtor Today

For Print Ad or Online. Call or Email
dianew@miltoncanadianchampion.com
905-878-2341 x-212

Pat RIDEOUT*
Without change, there'd be no butterflies
Direct 905 875 7040 | Office 905 878 8101
*Sales Representative pat@patrideout.ca

2014
THE AWARD OF EXCELLENCE

www.PatRideout.ca

GENTURY SEMI-DETACHED



Charming century semi-detached in Old Milton. This lovely home has 3 bedrooms, 1 and a half baths, hardwood floors, and an eat-in kitchen. Very deep (132 feet) lot with a coach house at the rear. Call Pat to view this gem. **\$425,000.**

DEVELOPMENT PROPERTIES



Located on Britannia Rd between Ontario and Thompson Rd, these two 1 acre properties are part of the Boyne Survey and will be ready to develop in 3-4 years. The properties must be sold together, and the sellers wish to remain in the homes for a short period. Great opportunity to pick up 2 acres in a future development area. Each property is listed for **\$1,250,000.**

LOOKING FOR A RENTAL?



I have two townhouses in a very desirable area available immediately for lease: a 3 storey, 3 bedroom with loads of upgrades at \$1600 per month, and a 2 storey, 3 bedroom that's just been totally painted throughout at \$1650 per month. Excellent credit required for both. No pets, no smokers. Call Pat to view.

I'm never too busy for your referrals.

Full member of the Oakville-Milton, Toronto and Hamilton-Burlington Real Estate Boards

Top 3% Nationally for Royal LePage

905-878-8101
To view our listings go to
www.THEHOMEHUNTER.ca

ROYAL LEPAGE
Meadowtowne Realty, Brokerage
Independently Owned and Operated

Barbara Crowe, M.V.A.
BROKER
barbcrowe@royallepage.ca

Hunter Obee, B.COMM.
SALES REPRESENTATIVE
hunter@thethehomehunter.ca



ALL OUR HOUSES HAVE SOLD.

If you are thinking of selling and need a dynamic duo to sell your home please give us a call.

Barbara or Hunter
@ 905-878-8101

"Moving you from Place to Place"

www.brazeauteam.com

1.800.514.3316

110 Brian Blvd., Waterdown • \$484,900



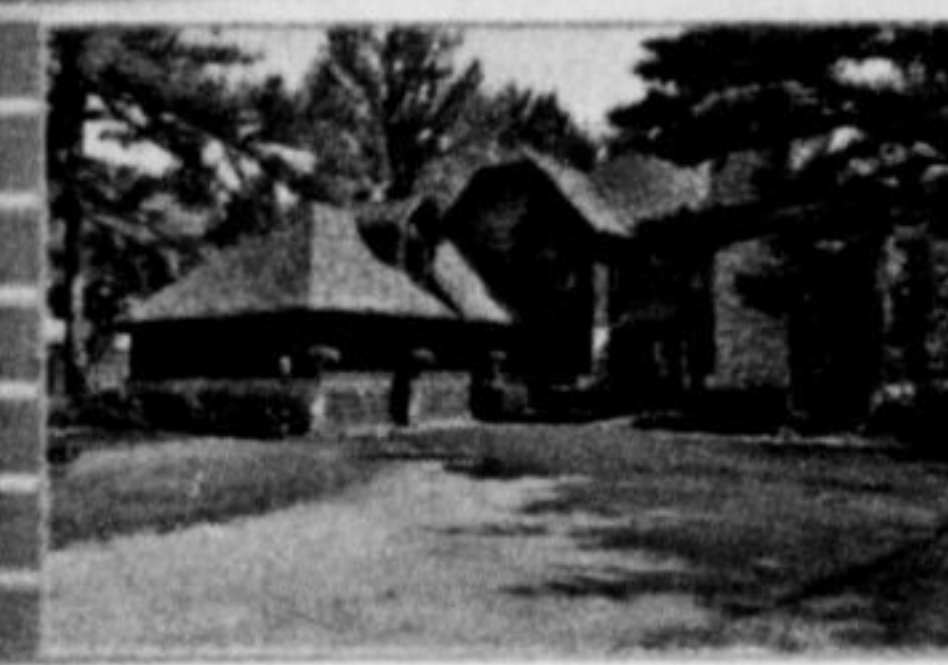
Fabulous location & amenities. Charming 3 bdrm, detached home just steps from Guy Brown School & Park. Large Master w/ensuite. Extensive decking in private yard. **Huge double car garage with inside entry. Excellent Value 10+.**

511 Campbellville Road, Campbellville • \$549,000



Well built bungalow with separate 2 car garage on a very pretty 1/2 acre lot. LR with fireplace. Separate dining room. Eat in kitchen with oak cabinets and adjacent laundry area. Master has a large dressing room and 3 piece ensuite. L/L has a recreation room, bar area, exercise room, 4th bdrm and walk up to outside. Freshly painted in neutral colours. Roof reshingled in May '15/with transferable warranty. Heat pump furnace new in '12. New water heater. Lovely home in great location with quick 401 access. Don't miss out.

14 Stonebury Place, Carlisle • \$950,000



Stunning custom built on private, quiet cul de sac minutes from Carlisle. Unique architecture & character. Stone, wood and surround with Muskoka like trees o 2.77 Acres. New kitchen, appliances & granite counters. Hardwood & quality upgrades. (4) 3 bedrooms plus a loft bedroom w/separate staircase, ideal for inlaw/nanny suite. 4 baths. Newly finished basement with gas fp.

4345 Random Acres, Milton • \$1,588,000



Magnificent, custom Exec Estate on 2.26 wooded Acres in sought after area. Approx 5100 sq. ft. Main flr Master. Gourmet kit w/bkfst bar, granite counters, induction stove, double ovens & w/o. 2 laundry rms 1st & 2nd flrs. 4 bedrooms on upper level + bonus room. Inground, kidney, salt water pool & 8 seater hot tub.

12706 Dublin Line, Halton Hills • \$1,899,000



A beautiful 115 acres that includes ponds and trails through expansive woodlots and conservation lands that facilitate wildlife breeding and viewing. The property has an amazing barn with 6 newer box stalls and large paddocks. The house is an old Ontario red brick farm house built in the mid-1800s that has been extensively renovated and added on to. The location is very close to GO train, schools and Clublink golf.

Please call to find out how we can get your home sold

The Brazeau Team
ROYAL LEPAGE
Meadowtowne Realty, Brokerage
Independently Owned and Operated

Sales Representatives, Joseph Brazeau, Virginia Brazeau, Jodie Near, Jennifer Brazeau-Barg

Serving Town & Country: Milton, Campbellville, Halton Hills, Flamborough, Oakville, Burlington, Waterdown & Carlisle

905-878-8101 • Fax: 905-878-8188

