

Are you connected to your community?

Get all the community news from Milton, Oakville, Burlington and surrounding areas quickly and conveniently online and on your schedule.

www.insidehalton.com

New Patients Welcome!
Sapphire Dental Centre
 SERVING MILTON PROUDLY!



FEATURING ALL ASPECTS OF DENTISTRY

- INCLUDING:**
- TMD
 - BRACES
 - SLEEP APNEA APPLIANCES
- FREE EMERGENCY EXAMS.**

TEETH IN ONE DAY!
 Ask for details!



COMPLIMENTARY CONSULTATION FOR BRACES!

PLEASE VISIT THE CLINIC FOR OTHER COMPLIMENTARY OFFERS

OFFICE HOURS

Monday:	10:30 AM - 07:30 PM
Tuesday:	Closed
Wednesday:	10:30 AM - 07:30 PM
Thursday:	12:00 NN - 08:00 PM
Friday:	10:00 AM - 05:00 PM
Saturday:	10:00 AM - 04:00 PM
Sunday:	By Appointment Only

Dr. Nibu Varguise
"Your Milton Neighbour"

433 Steeles Ave E., #102
416-708-1047 • 905-878-8760
 FAX: 905-878-8194
www.saphiredentalcentre.com



Holiday spirit

Above, Salvation Army of Milton Major Steve Wiseman accepts two bins of food and a hefty haul of toys from *Canadian Champion* receptionist Sharon Rowley on behalf of the newspaper and its readers. Many of the toys — \$1,400 worth — came from Halton business Kakidoo as part of its yearly Christmas project. Inset, Alredo De Vanna (left) and Victor Bensusan of Kakidoo drop off the toys. **Above photo by Graham Paine / Metroland West Media Group**
Inset photo by Steve LeBlanc / Canadian Champion

LET'S BEAT THE FLU!
 PROTECT YOUR FAMILY THIS SEASON WITH A FREE FLU SHOT. NO APPOINTMENT IS NECESSARY.

NOW OPEN - ACCEPTING NEW PATIENTS
LAURIER WALK-IN CLINIC, URGENT CARE & FAMILY PRACTICE

DR. ADIL SIDDIQUE & DR. ALIYA ADIL (Female Doctor)



HOURS: MONDAY - FRIDAY: 10AM-8PM • SAT: 9AM-2PM

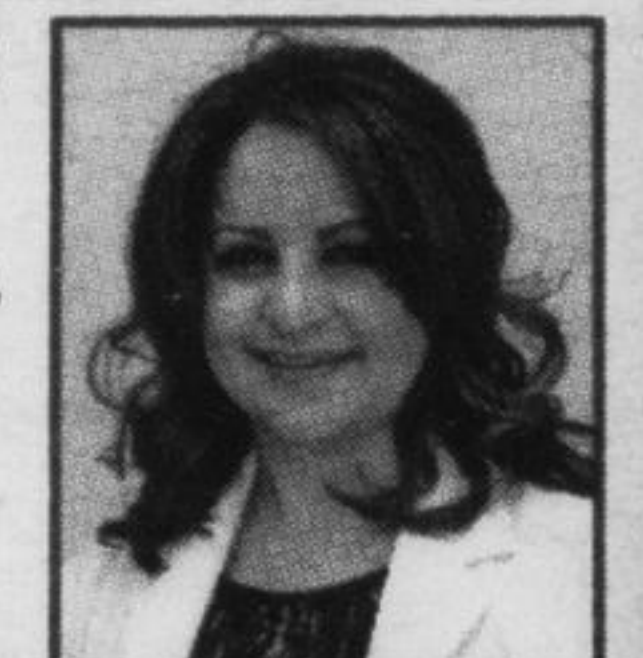
TOTAL HEALTH - YOUR NEIGHBOURHOOD CLINIC AND PHARMACY WITH THE TOTAL CARE PACKAGE
 497 Laurier Avenue, Milton (Across from Food Basics)

905-864-9008

Total Health PHARMACY

YOU'RE SICK, WE'RE QUICK!

- Extensive Medication Reviewing And Patient Consultations
- Accept All Drug Plans
- 10% Seniors Discount Everyday, Excluding Rx
- Waive \$2.00 Co-Pay
- Free Delivery Rx Service
- Blister Packing Services
- Free Blood Sugar Monitors



VIVIAN SALIB
 Pharmacist - Owner

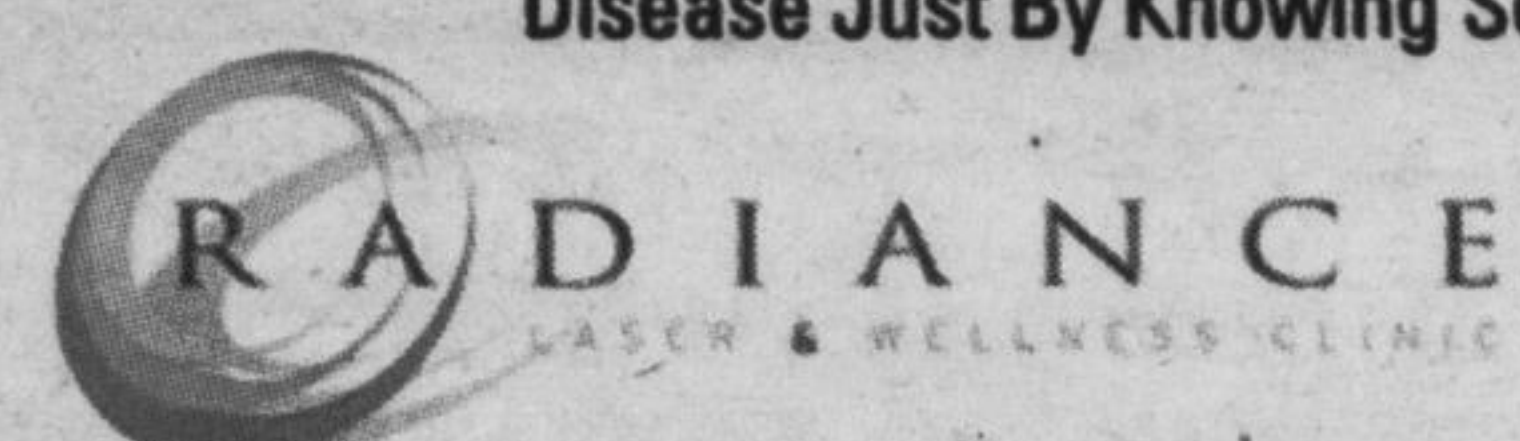
HOURS: MONDAY - FRIDAY: 9AM-8PM • SAT: 9AM-3PM
905-878-2000

"CHANGE YOUR BODY CHANGE YOUR LIFE!"

GET THE BODY You Love!

EAT RIGHT FOR YOUR BLOOD TYPE

Learn Ways To Improve Your Diet,
 Manage Your Weight, Increase Your Energy Level, Decrease Your Stress And Prevent Disease Just By Knowing Something As Simple As Your Blood Type



www.radiancelaserandwellness.ca
 Info@radiancelaserandwellness.ca

400 Bronte Street South, Unit 107, Milton
 (Inside Spa Bellissima)

905-876-1711



Dr. Anna O'Sullivan
 D.C., F.I.A.C.A., Dip. Hom. (UK)