

Man charged in residential break-ins

A Milton man faces charges related to two daytime residential break-ins. Halton police say the break-ins took place on November 15 and 26 at homes in Milton.

Cash, jewelry and other items were stolen. John Martin, 31, is charged with two counts of break and enter, and fail to comply with an undertaking.

SEE OUR ONLINE EDITION AT www.insidehalton.com

The Corporation of the Town of Milton



- 905-878-7252
- TTY: 905-878-1657
- 1-800-418-5494 (Rockwood/Guelph)

www.milton.ca



Ring in the New Year

Please join Mayor Krantz around the historic bell in Victoria Park (adjacent to Town Hall, 150 Mary Street) at 11:45 pm for a brief and casual gathering to ring in the year 2015 at midnight.



Information pickets

About 30 correctional officers — members of the Ontario Public Service Employees Union (OPSEU) Local 234 — held a lunch-hour information picket in front of Halton MPP Indira Naidoo-Harris's constituency office on Mill Street Friday. The local, representing 820 workers from Maplehurst Correctional Centre and the Vanier Centre for Women in Milton, is currently in contract negotiations with the provincial government. OPSEU's contract with the Ontario government expires December 31. *Graham Paine / Metroland West Media Group (Follow on Twitter @halton_photog)*

PJ'S PETS

boxing week BLOWOUT

BUY ONE, GET ONE
50% OFF
ALL DOG FOOD, CAT FOOD
& CAT LITTER



Plus dozens of other Buy One, Get One 50% OFF offers on VME Bird Seed, Hay, Extrusion, Aquarium Gravel, Fish Food and Reptile Substrates & more!

Some exclusions apply. See in-store for full details.

VALID DECEMBER 26 ~ DECEMBER 31, 2014

Steeles Ave. & James Snow Pkwy, Walmart Plaza, Milton
www.pjspet.com

SAVE AN ADDITIONAL
50% OFF
ALL CLEARANCE ITEMS

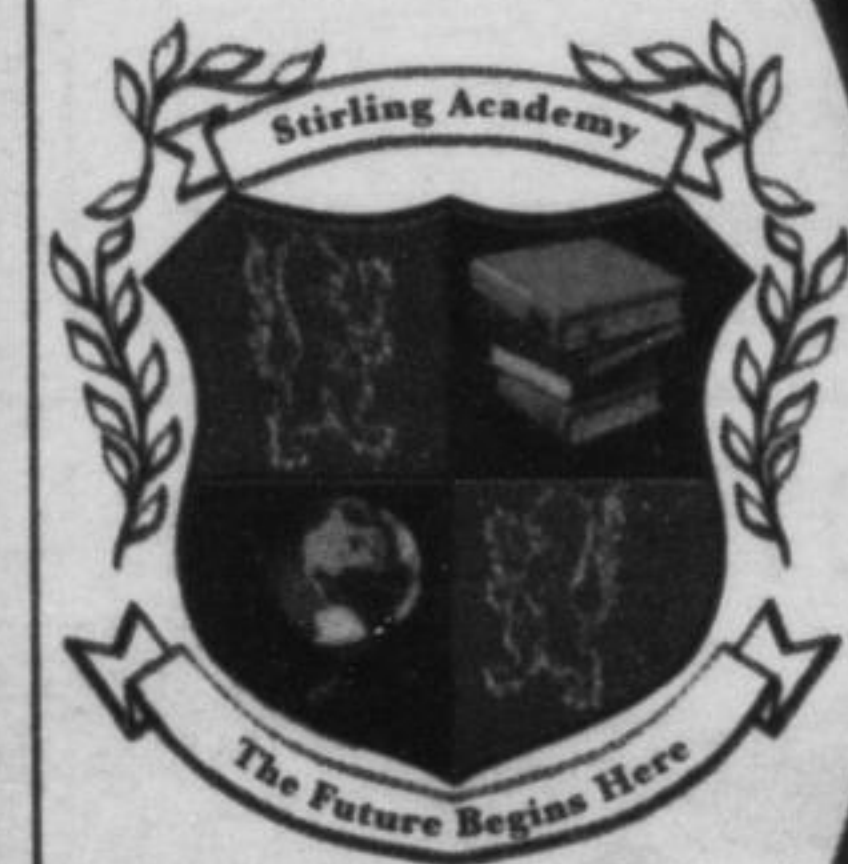
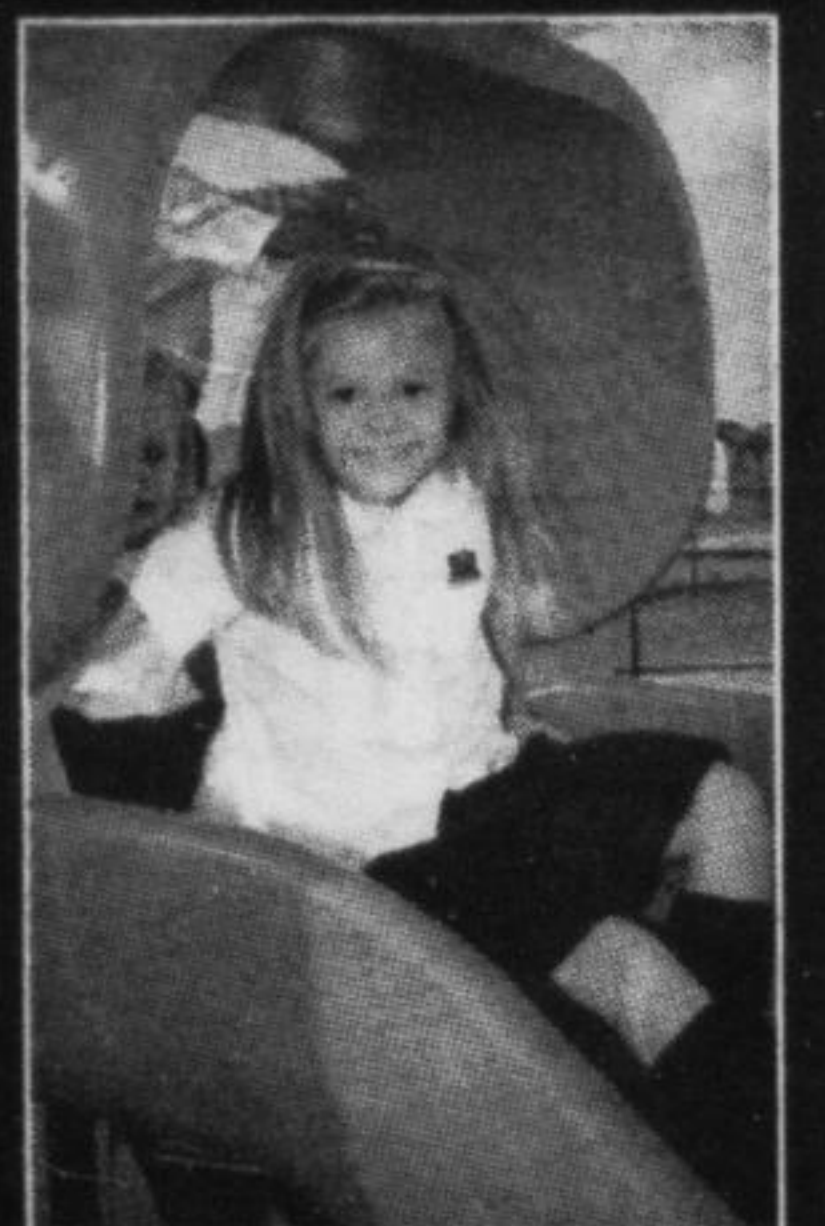
STIRLING MONTESSORI ACADEMY

Enroll now!

Half-day / Full-day programs
3 - 6 years

Book a tour
905-864-6000

123 Main St. East Milton
www.stirlingmontessori.com



If you need a Mortgage, you can try and fit into the neat little boxes at the bank, or you can come to us first.

We don't have boxes, we have solutions. And that's why almost 50 per cent of first-time home buyers (48%*) now use a broker to arrange their mortgage, up from 35 per cent five years ago!

Call today for out-of-the-box thinking.



Kimberly Singh, AMP
Mortgage Agent
Brokerage #10428 Corp: 877.667.5483

T. 905.864.1365
C. 905.864.6082

kimberly@kimberlysingh.ca
kimberlysingh.ca

